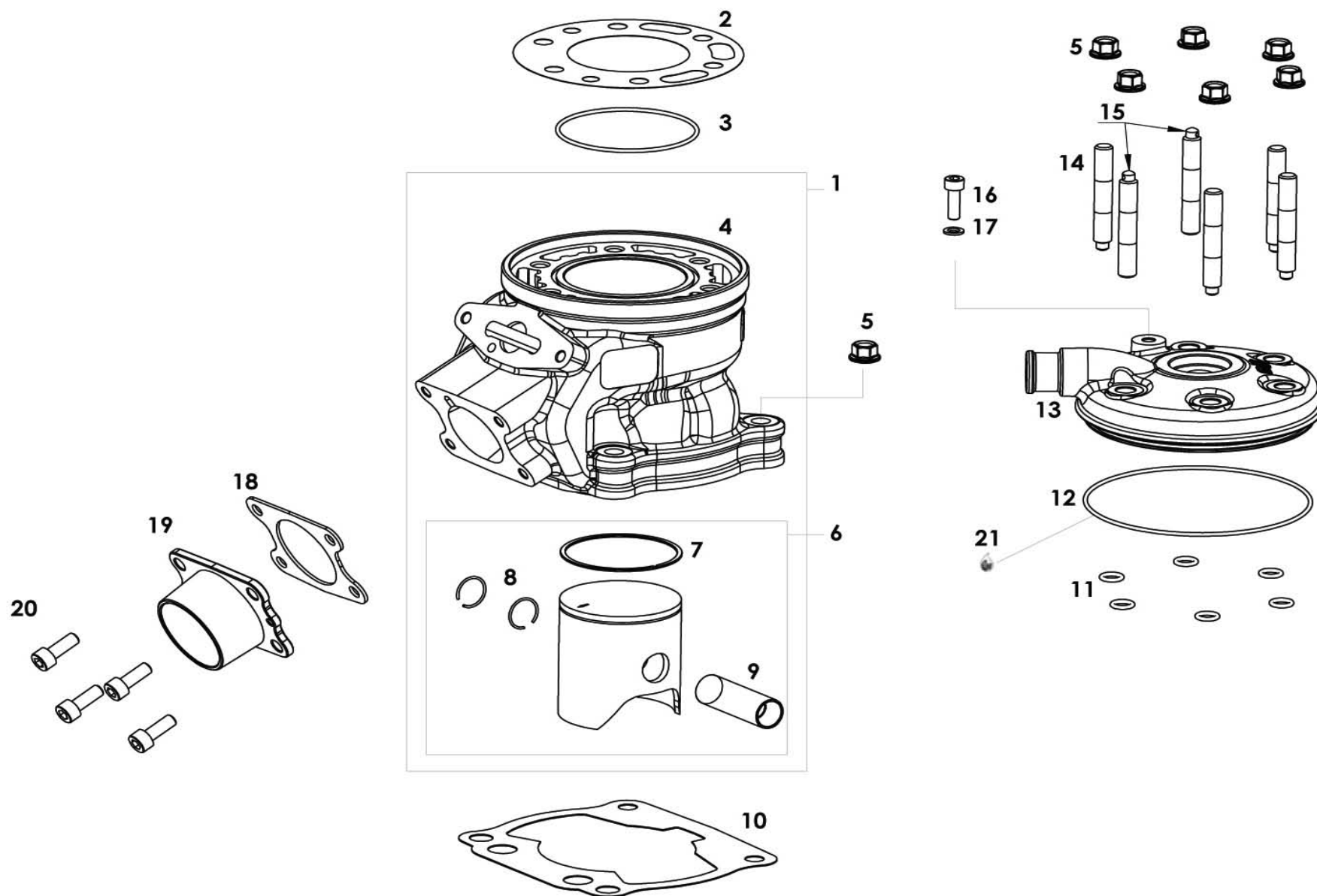




HEAD AND CYLINDER * TESTA E CILINDRO



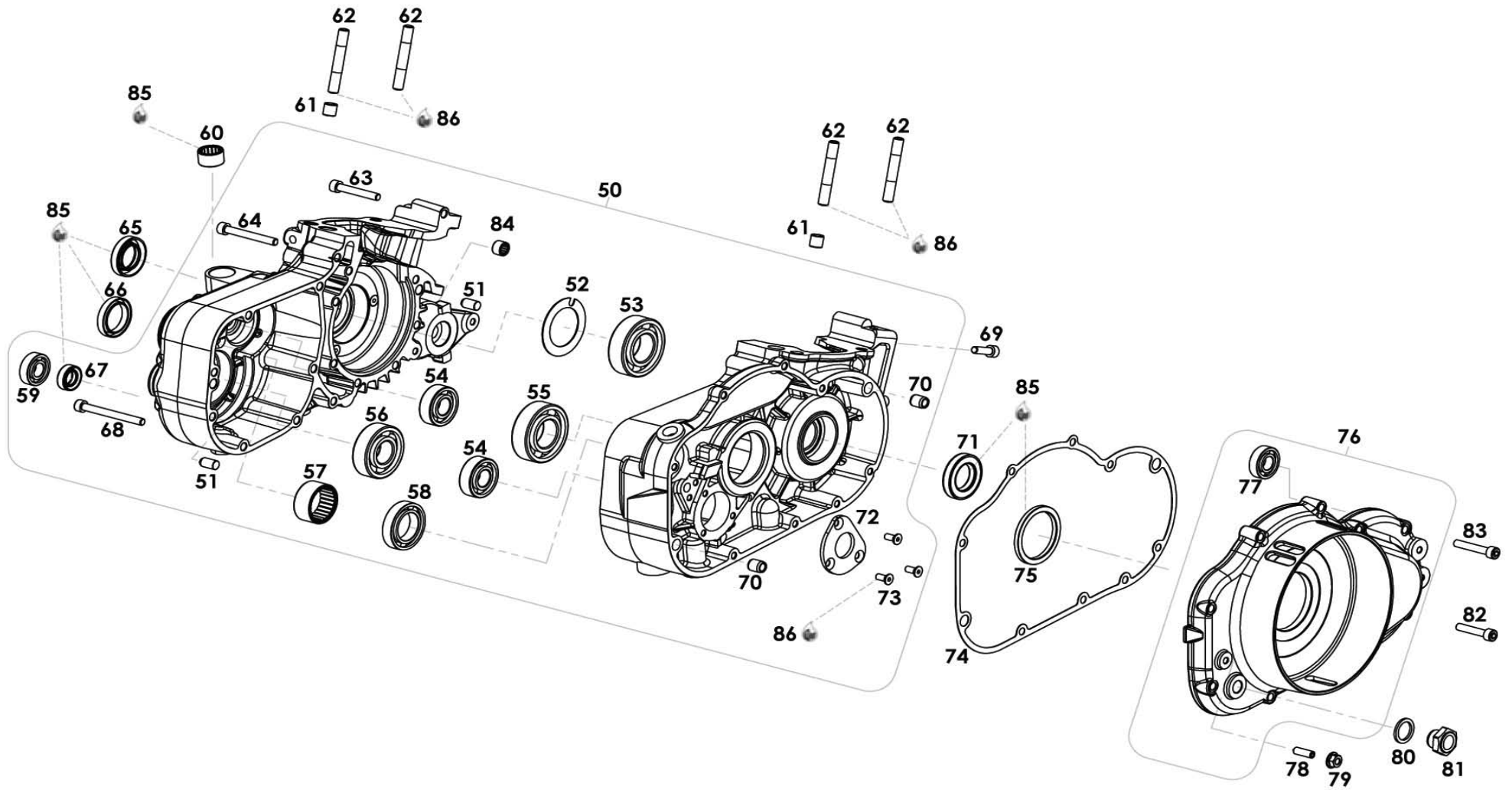


HEAD AND CYLINDER * TESTA E CILINDRO

FIG.	CODE	DESCRIPTION	DESCRIZIONE	Q.TY
1	P 23.055 00 95	MxE complete cylinder with piston	Cilindro MxE con pistone completo	1
2	A 23.022 00 00	head gasket sp. 0.05	Guarnizione testa 0,05	1
	A 23.023 00 00	head gasket sp. 0.10	Guarnizione testa 0,10	1
	A 23.024 00 00	head gasket sp. 0.20	Guarnizione testa 0,20	1
	A 23.025 00 00	head gasket sp. 0.30	Guarnizione testa 0,30	1
3	A 98.024 16 00	O-ring (2237) 60.04x1.78	O-ring (2237) 60.04x1.78	1
4	P 23.055 00 12	MxE cylinder cromed and timed	Cilindro MxE in fase cromato	1
5	A 98.151 00 00	Nut M8x8	Dado flangiato M8x8	10
6	A 12.265 00 00	Complete piston 53,93	Pistone 53.93 completo	1
	A 12.266 00 00	Complete piston 53,94	Pistone 53.94 completo	1
	A 12.267 00 00	Complete piston 53,95	Pistone 53.95 completo	1
7	A 20.119 00 00	Piston Ring 54	Segmento pistone 54	1
8	A 20.115 00 00	Piston Pin Clip	Anellino ferma spinotto pistone	2
9	A 20.114 00 00	Piston Pin	Spinotto pistone	1
10	A 90.006 00 00	Cylinder gasket 0.10	Guarnizione Cilindro 0.10	1
	A 90.420 00 00	Cylinder gasket 0.20	Guarnizione Cilindro 0.20	1
	A 90.521 00 00	Cylinder gasket 0.30	Guarnizione Cilindro 0.30	1
	A 90.522 00 00	Cylinder gasket 0.50	Guarnizione Cilindro 0.50	1
11	A 98.143 16 00	O-Ring 11X7X2	O-Ring 11X7X2	6
12	A 98.006 16 00	O-ring (2387) 98,05x1,78	O-ring (2387) 98,05x1,78	1
13	A 23.036 11 11	Head	Testa	1
14	A 90.406 00 00	M8x55 stud	Prigioniero M8x55 con puntale	4
15	A 90.407 00 00	M8x55 stud with hole	Prigioniero M8x55 con puntale forato	2
16	A 98.003 24 52	Allen screw M5x10	Vite TCEI M5x10 (Brugola)	1
17	A 98.004 28 00	Washer Ø5.5-10x1	Rondella Ø5.5-10x1	1
18	A 10.156 00 00	Exhaust gasket	Guarnizione scarico	1
19	A 10.132 33 11	exhaust manifold	Collettore Scarico	1
20	A 98.008 24 51	Allen screw M6x16	Vite TCEI M6x16 (brugola)	4
21	A 90.197 00 00	Xeramic grease	Grasso	1



CRANKCASE * BASAMENTO



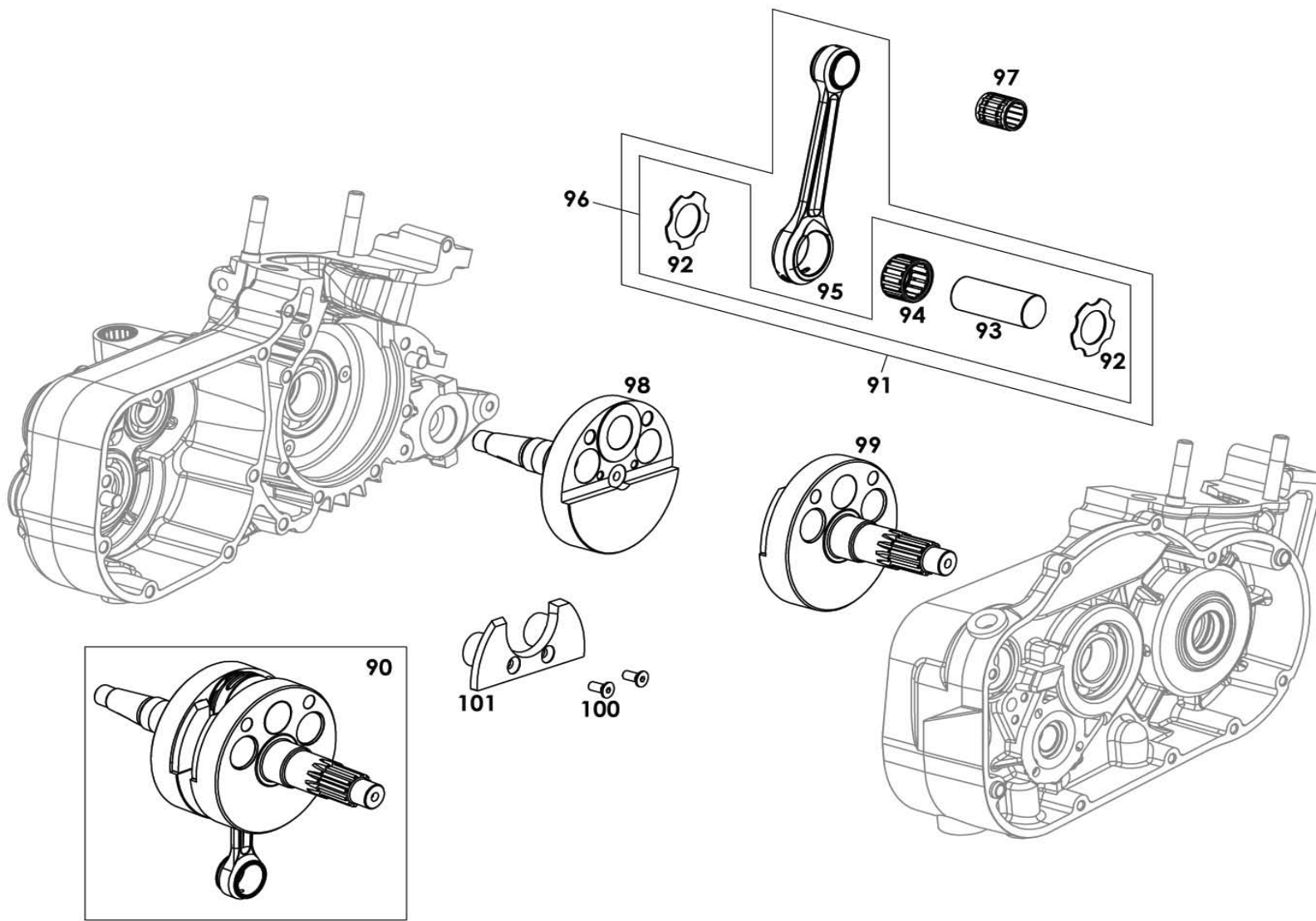


CRANKCASE * BASAMENTO

<i>FIG.</i>	<i>CODE</i>	<i>DESCRIPTION</i>	<i>DESCRIZIONE</i>	<i>Q.TY</i>
50	P 23.046 00 91	MxE Shifter crankcase with roller bearings	Basamento MxE SHIFTER con cusc. Rulli	1
51	A 98.140 34 00	8x16 grinded bush	Spina 8x16 rettificata	2
52	A 20.124 83 00	Washer 0.8 for main bearing	Spessore 0.8 battuta cuscinetto	2
53	A 98.175 00 00	Roller bearing Ø25x52x15	Cuscin. a rulli Ø25x52x15	2
54	A 98.086 00 00	Bearing 6202-C3	Cuscinetto 6202-C3	2
55	A 98.085 00 00	Bearing 6205-C3	Cuscinetto 6205-C3	1
56	A 98.087 00 00	Bearing 6204-C3	Cuscinetto 6204-C3	1
57	A 98.091 00 00	Cage 28x16 TLA	Gabbia a rulli 28x16 TLA	1
58	A 98.089 00 00	Bearing 61905-C3	Cuscinetto 6905-C3	1
59	A 98.088 00 00	Bearing 6001 ZZ	Cuscinetto 6001 ZZ	1
60	A 98.217 00 00	Cage 14x14 RS	Gabbia a rulli 14x14 RS	1
61	A 90.021 00 00	Cylinder centering bush 8-10x10	Boccola 8-10x10 centraggio cilindro	2
62	A 90.406 00 00	Cylinder stud	Prigioniero cilindro	4
63	A 98.063 24 51	Black screw M6x35	Vite M6x35 brugola brunita	1
64	A 98.011 24 51	Black screw M6x50	Vite M6x50 brugola brunita	10
65	A 90.020 00 00	Oil seal 20-35x7	Anello di tenuta 20-35x7	2
66	A 90.291 00 00	Oil seal FPJ 25-37x6 (ignition side)	Anello di tenuta FPJ 25-37x6 (lato accens.)	1
67	A 90.293 00 00	Oil seal 12-22x7	Anello di tenuta 12-22x7	1
68	A 98.080 24 51	Black screw M6x65	Vite M6x65 brugola brunita	6
69	A 98.096 24 51	Black screw M6x20	Vite M6x20 brugola brunita	4
70	A 90.022 00 00	Crankcase bush 6-10x11.5	Boccola basamento 6-10x11.5	2
71	A 90.292 00 00	Oil seal FPJ 22-40x7 (trasmission side)	Anello di tenuta FPJ 22-40x7 (lato trasmiss.)	1
72	P 20.125 83 11	Mx125 bearing plate	Piastrina ferma cuscinetto Mx125	1
73	A 98.082 24 51	Black screw M5x12	Vite M5x12 svasata brunita	3
74	A 20.127 00 00	Mx125 clutch cover gasket	Guarnizione coperchio frizione Mx125	1
75	A 90.601 00 00	Oil seal 42-52x4	Anello di tenuta 42-52x4	1
76	P 20.199 00 91	Clutch cover	Coperchio frizione completo	1
77	A 98.086 00 00	Bearing 6202-C3	Cuscinetto 6202-C3	1
78	A 98.093 24 51	M6x20 grub screw flat end	Grano M6x20 estremità piatta	1
79	A 98.094 24 00	M6x6 flange nut	Dado flangiato M6x6	1
80	A 90.405 00 00	Oil level control cap gasket	Guarnizione spia livello olio	1
81	A 90.404 00 00	Oil level control cap	Spia livello olio	1
82	A 98.063 24 51	Black screw M6x35	Vite M6x35 brugola brunita	2
83	A 98.031 24 51	Black screw M6x30	Vite M6x30 brugola brunita	8
84	A 98.017 00 00	Roller cage HK0808 for bendix	Gabbia a Rulli HK 0808 per bendix	1
85	A 90.197 00 00	Xeramic grease	Grasso Xeramic	1
86	A 90.199 00 00	Medium thread locking	Frenafilletti medio	1



CRANKSHAFT * ALBERO MOTORE



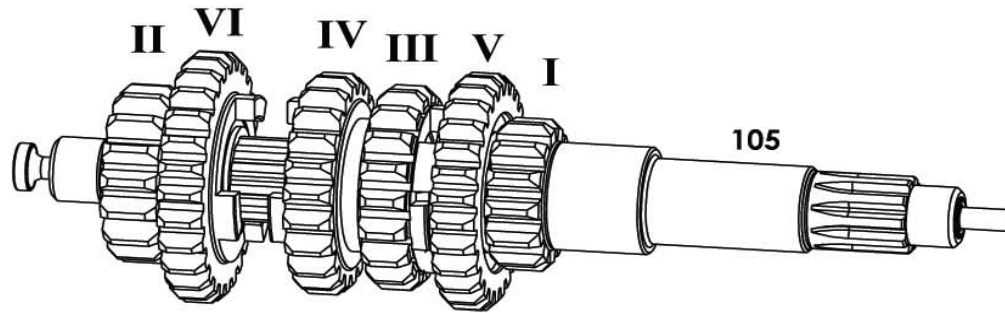


CRANKSHAFT * ALBERO MOTORE

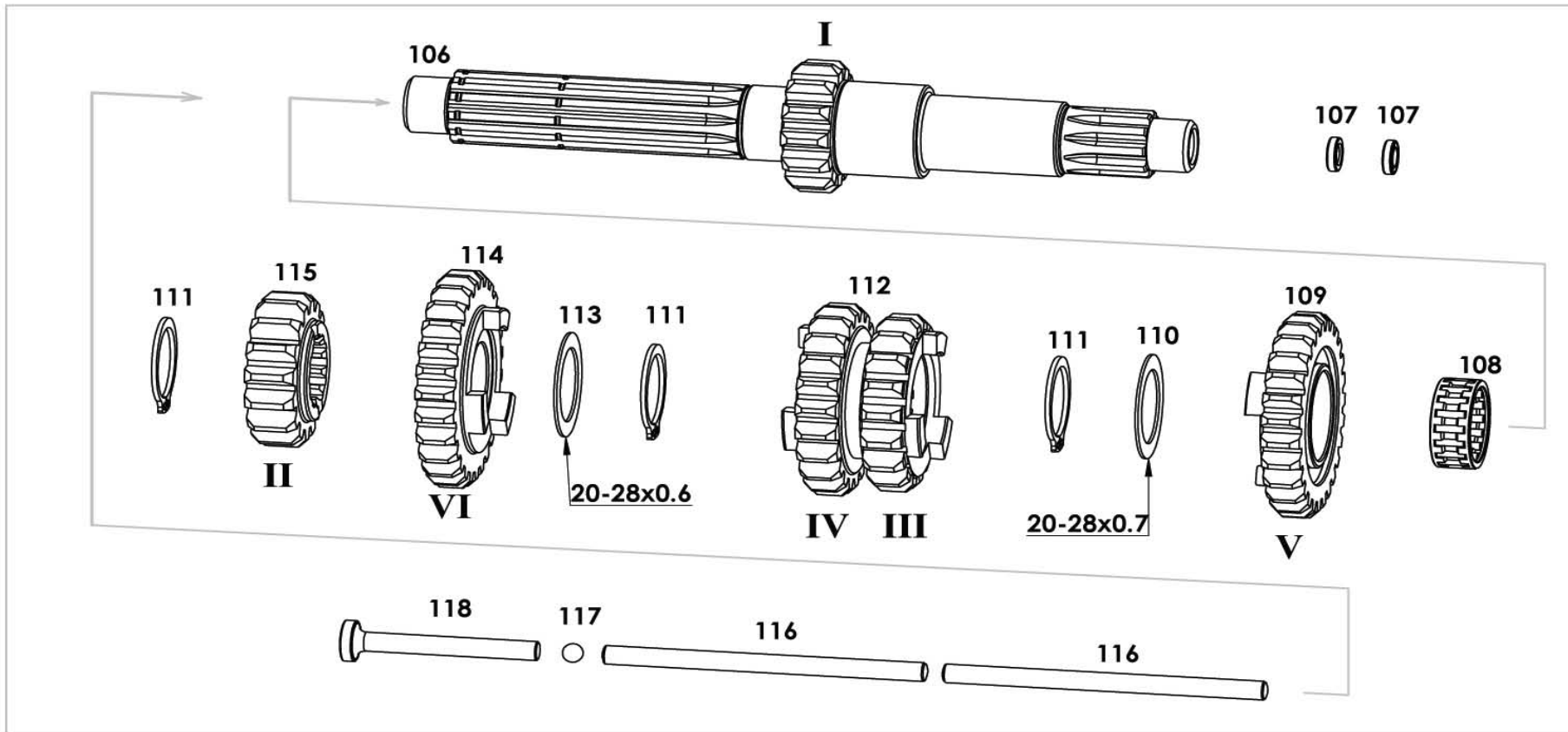
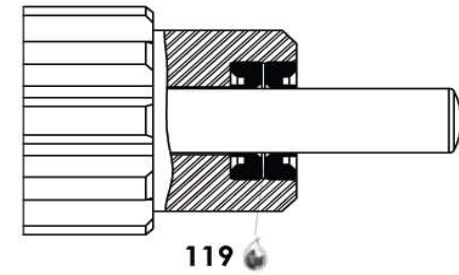
FIG.	CODE	DESCRIPTION	DESCRIZIONE	Q.TY
90	P 23.056 00 91	Maxter Shifter complete crankshaft	Albero motore Maxter Shifter completo	1
91	P 20.180 00 91	Complete conrod 110	Biella completa 110	1
92	A 90.418 29 00	Silvered conrod washer	Rasamento Biella Argentato	2
93	A 20.020 34 00	Crankpin	Asse Accoppiamento	1
94	A 98.021 00 00	Big end cage	Gabbia testa biella	1
95	A 20.093 24 00	Conrod 110	Biella interasse 110	1
96	P 20.181 00 91	Complete crankpin	Asse accoppiamento completo	1
97	A 98.022 00 00	Small end cage	Gabbia piede biella	1
98	P 23.033 24 15	MxE Shifter half crankshaft ign. Side	Semialbero MxE Shifter lato accensione	1
99	P 23.019 24 15	MxE Shifter half crankshaft trasm. Side	Semialbero MXE Shifter lato trasmissione	1
100	A 98.163 24 52	Screw Philips M5x12 flared	Vite M5x12 (svas. intaglio a croce)	4
101	A 12.186 16 11	Stuffer for crankshaft	Guancetta albero motore	2



PRIMARY SHAFT * ALBERO PRIMARIO



SCHEMA MONTAGGIO PARAOLI
OIL SEALS ASSEMBLING



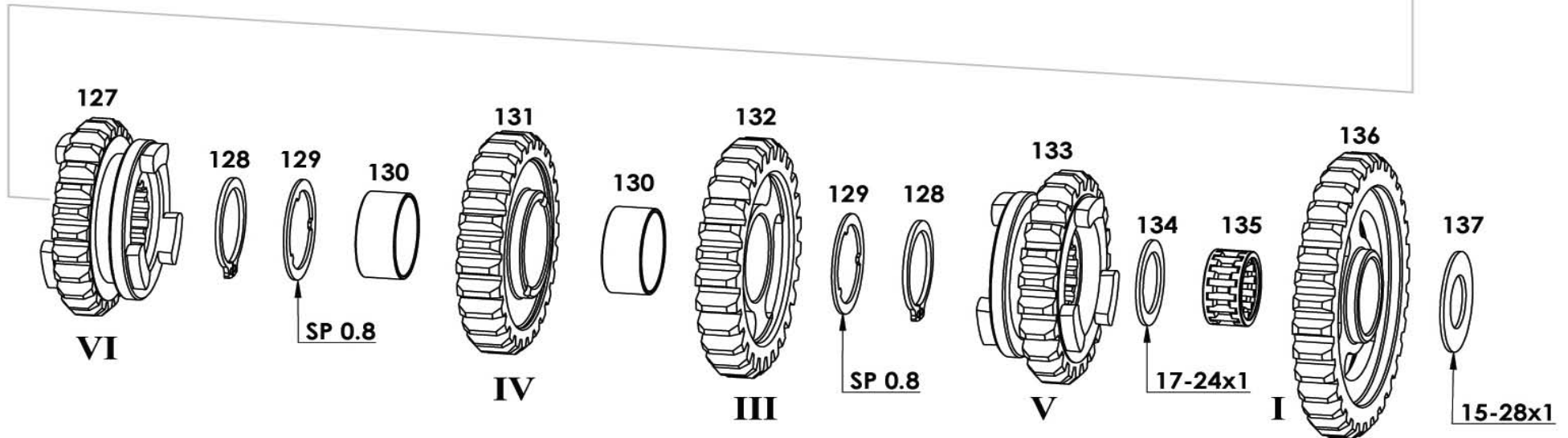
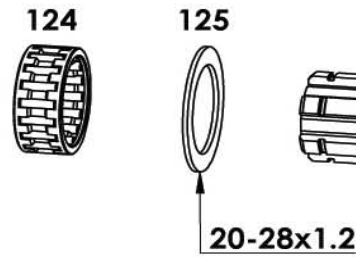
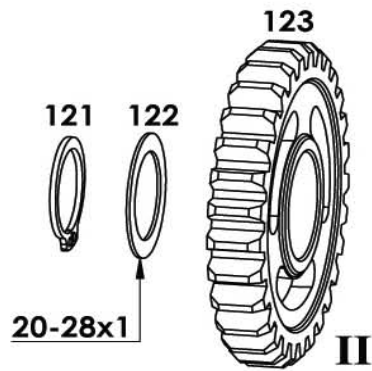
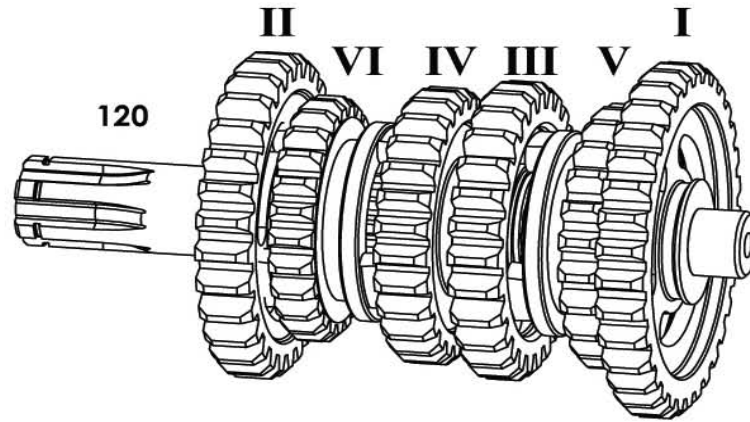


PRIMARY SHAFT * ALBERO PRIMARIO

<i>FIG.</i>	<i>CODE</i>	<i>DESCRIPTION</i>	<i>DESCRIZIONE</i>	<i>Q.TY</i>
105	P 20.145 00 91	Complete Mx125 primary shaft	Albero primario Mx125 completo	1
106	A 20.057 00 00	Primary shaft	Albero primario	1
107	A 90.304 00 00	Ring I 5/9/2	Anello tenuta 5/9/2	2
108	A 98.115 00 00	Cage 20-24x10	Gabbia a rulli 20-24x10	1
109	A 20.060 00 00	Primary 5th gear	Ingranaggio 5° marcia primario	1
110	A 98.133 34 00	Washer 20-28x0.7	Rasamento 20-28x0.7	1
111	A 98.134 24 00	Shaft seeger D20	Seeger per albero D20	3
112	A 20.059 00 00	Primary 3th and 4th gear	Ingranaggio 3° e 4° marcia primario	1
113	A 20.206 83 00	Washer 20-28x0.6	Rasamento 20-28x0.6	1
114	A 20.061 00 00	Primary 6th gear	Ingranaggio 6° marcia primario	1
115	A 20.058 00 00	Primary 2th gear	Ingranaggio 2° marcia primario	1
116	A 98.139 34 00	Pin 5x80	Puntale Centrale/Finale 5x80	2
117	A 98.118 00 00	D5 sphere	Sfera D5	1
118	A 20.242 34 00	Metal tip with head	Puntale con testa	1
119	A 90.197 00 00	Xeramic grease	Grasso Xeramic	1



SECONDARY SHAFT * ALBERO SECONDARIO



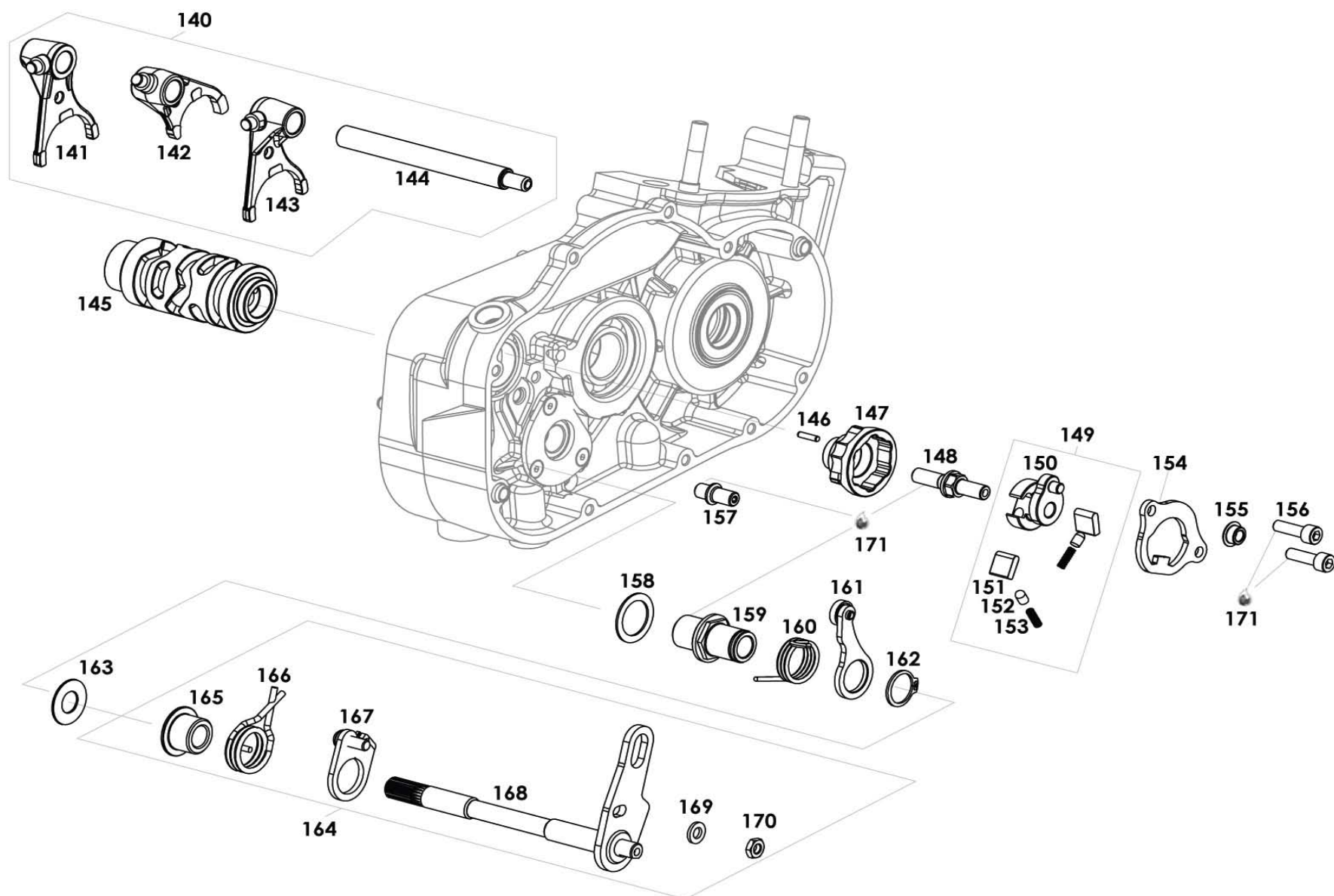


SECONDARY SHAFT * ALBERO SECONDARIO

<i>FIG.</i>	<i>CODE</i>	<i>DESCRIPTION</i>	<i>DESCRIZIONE</i>	<i>Q.TY</i>
120	P 20.146 00 91	Complete Mx125 secondary shaft	Albero secondario Mx125 completo	1
121	A 98.134 24 00	Shaft seeger D20	Seeger per albero D20	1
122	A 98.122 00 00	Washer 20-28x1	Rasamento 20-28x1	1
123	A 20.054 00 00	Secondary 2nd gear	Ingranaggio 2° marcia secondario	1
124	A 98.115 00 00	Cage 20-24x10	Gabbia a rulli 20-24x10	1
125	A 98.167 00 00	Washer 20-28x1,2	Rasamento 20-28x1,2	1
126	A 20.050 00 00	Secondary shaft	Albero secondario	1
127	A 20.055 00 00	Secondary 6th gear	Ingranaggio 6° marcia secondario	1
128	A 98.123 24 00	Shaft seeger D22	Seeger per albero D22	2
129	A 20.065 00 00	Cog washer 22-28x0.8	Rasamento dentato 22-28x0.8	2
130	A 20.049 00 00	Secondary shaft bush	Boccola albero secondario	2
131	A 20.051 00 00	Secondary 4th gear	Ingranaggio 4° marcia secondario	1
132	A 20.052 00 00	Secondary 3th gear	Ingranaggio 3° marcia secondario	1
133	A 20.056 00 00	Secondary 5th gear	Ingranaggio 5° marcia secondario	1
134	A 98.119 00 00	Washer 18-24x1	Rasamento 18-24x1	1
135	A 98.125 00 00	Cage 17-21x10	Gabbia a rulli 17-21x10	1
136	A 20.053 00 00	Secondary 1st gear	Ingranaggio 1° marcia secondario	1
137	A 98.119 34 00	Washer 15-28x1	Rasamento 15-28x1	1



GEAR SELECTOR * SELETTORE CAMBIO



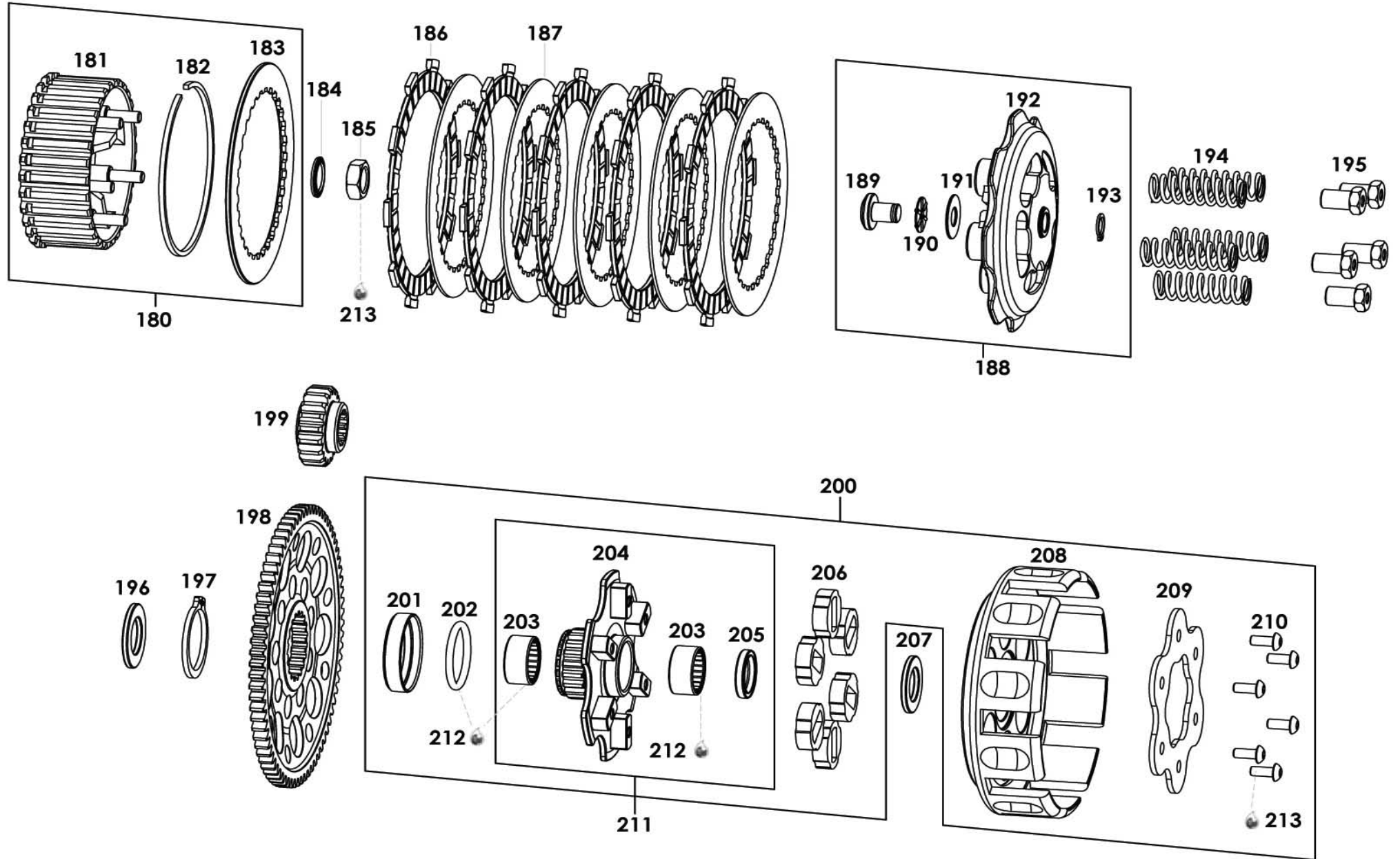


GEAR SELECTOR * SELETTORE CAMBIO

<i>FIG.</i>	<i>CODE</i>	<i>DESCRIPTION</i>	<i>DESCRIZIONE</i>	<i>Q.TY</i>
140	P 20.230 00 91	Gear forks kit	Kit forchette	1
141	P 20.002 24 11	2°/4° fork	Forchetta superiore 2°/4°	1
142	P 20.081 24 11	Central fork	Forchetta centrale	1
143	A 20.001 24 11	1°/3° fork	Forchetta inferiore 1°/3°	1
144	C 20.106 34 12	Fork pin	Perno forchetta	1
145	C 20.017 34 31	Desmodromic	Desmodromico cambio	1
146	A 98.126 34 00	Ratchet star centering pin Ø3	Spina centraggio stella cricchetto Ø3	1
147	C 20.011 34 11	Star drum	Stella cricchetto	1
148	C 20.070 34 31	Ratchet pin	Perno cricchetto	1
149	P 20.182 00 91	Complete ratchet	Cricchetto completo	1
150	A 20.010 34 31	Ratchet body	Corpo cricchetto	1
151	C 20.068 44 31	Small block ratchet	Inserto cricchetto	2
152	A 20.147 00 00	Push rod ratchet	Puntale cricchetto	2
153	A 20.148 00 00	Push rod ratchet spring	Molla puntale cricchetto	2
154	A 20.038 83 00	Ratchet plate guide	Piastrina guida cricchetto	1
155	C 20.069 34 31	Ratchet bush	Boccola cricchetto	1
156	A 98.075 24 51	Black screw M6x18	Vite M6x18 brugola brunita	2
157	A 20.337 33 52	Limit run selector pin	Perno finecorsa selettore	1
158	A 98.122 00 00	Washer 20-28x1	Rasamento 20-28x1	1
159	C 20.062 34 12	Selector bush	Boccola selettore	1
160	A 20.140 00 00	Stopping gear lever spring	Molla galoppino	1
161	A 20.073 00 91	Stopping gear lever	Galoppino	1
162	A 98.110 24 00	Seeger D18	Seeger D18	1
163	A 98.222 00 00	Washer 12-26x1	Rasamento 12-26x1	1
164	P 20.183 00 91	Selector gear group	Gruppo selettore cambio	1
165	P 20.077 31 11	Selector Bush spring	Boccola molla selettore	1
166	A 20.141 00 00	Selector spring	Molla selettore	1
167	P 20.142 00 91	Plate for regulation selector spring	Piastrina registro molla selettore	1
168	P 20.143 00 11	Gear selector	Selettore cambio	1
169	A 98.007 23 00	Washer 6.5-10.5x1.5	Rondella 6.5-10.5x1.5	1
170	A 98.112 24 00	M6 metalblock nut	Dado M6 metalblock	1
171	A 90.199 00 00	Medium thread locking	Frenafilletti medio	1



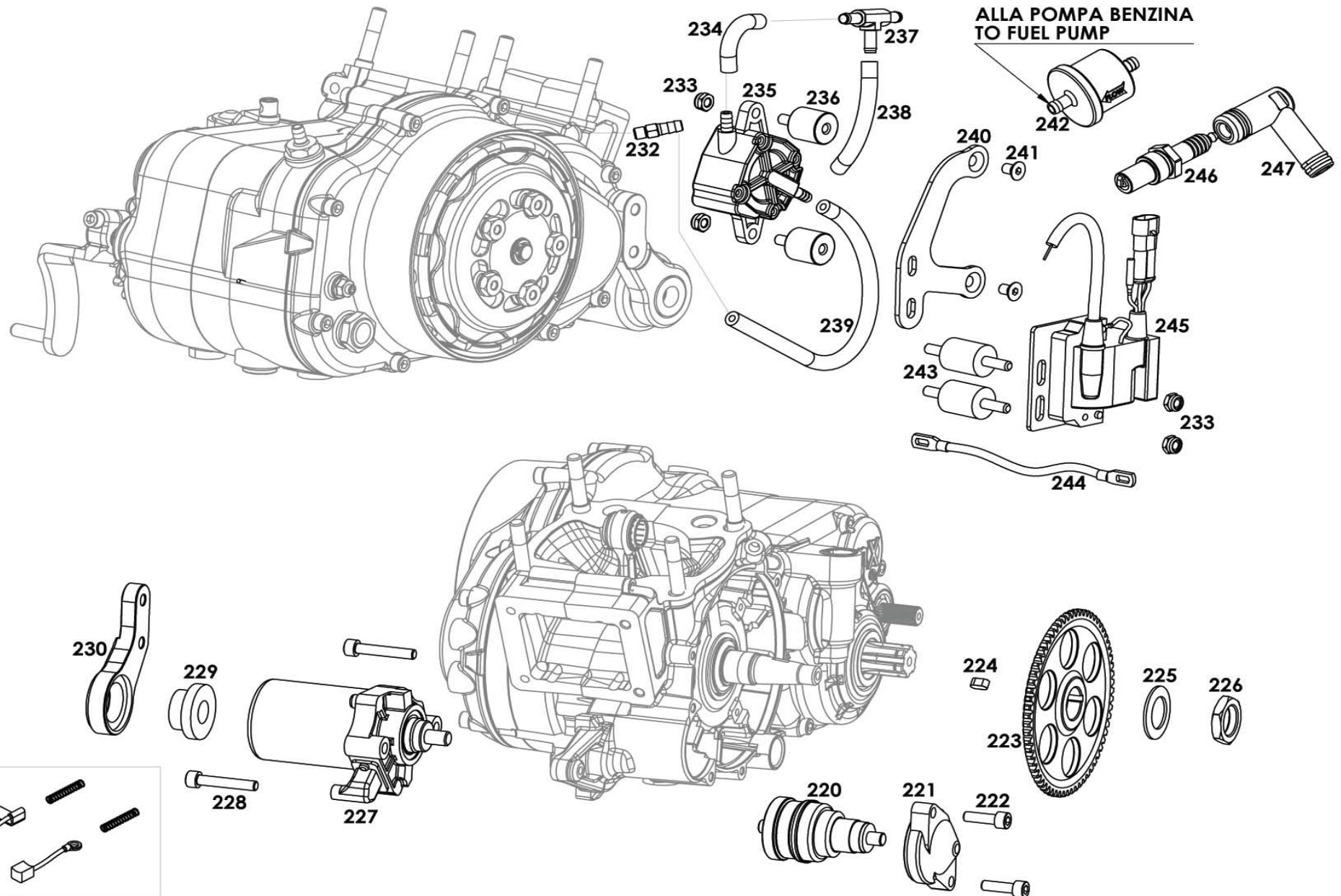
CLUTCH * FRIZIONE





CLUTCH * FRIZIONE

FIG.	CODE	DESCRIPTION	DESCRIZIONE	Q.TY
180	P 20.228 00 91	Complete drum	Tamburello completo	1
181	P 20.229 00 91	Clutch drum	Tamburello frizione	1
182	A 90.300 00 00	Drum seeger	Seeger tamburello	1
183	C 20.035 83 11	Drum disk	Disco tamburello	1
184	A 98.228 00 00	Drum nut washer	Rondella dado tamburello	1
185	A 20.160 53 52	Clutch drum nut	Dado tamburello frizione	1
186	A 90.301 00 00	Coated clutch disk	Disco frizione guarnito	5
187	A 90.302 00 00	Plate steel clutch disk	Disco frizione liscio	5
188	P 20.184 00 91	Complete clutch thrust plate	Spingidisco frizione completo	1
189	C 20.044 34 31	Clutch thrust plate pin	Perno spingidisco	1
190	A 98.098 00 00	Bearing 1024	Cuscinetto 1024	1
191	A 98.099 00 00	Washer 1024	Rasamento 1024	1
192	P 20.016 31 55	Clutch thrust plate	Spingidisco frizione	1
193	A 98.100 24 00	Seeger D10	Seeger D10	1
194	A 90.424 00 00	Clutch spring	Molla frizione	5
195	A 20.042 51 11	Clutch spring nut	Dado molla frizione	5
196	A 98.101 34 00	Washer 20x35	Rasamento 20x35	1
197	A 98.102 24 00	Primary gear wheel seeger D35	Seeger D35 corona primaria	1
198	A 20.255 34 00	Primary gear wheel	Corona primaria	1
199	A 20.046 34 00	Primary pinion	Pignone primaria	1
200	P 20.370 00 91	Complete clutch crown	Campana frizione completa con paraolio	1
201	A 20.368 33 00	Primary gear wheel spacer	Spessore campana frizione trattato	1
202	A 98.103 16 00	O-ring 30x4	O-ring 30x4	1
203	A 98.105 00 00	Cage 20x12	Gabbia rulli 20x12	2
204	A 20.040 34 00	Clutch hub	Mozzo frizione	1
205	A 90.600 00 00	Oil seal 20-26x4	Anello di tenuta 20x26x4	1
206	A 20.043 16 00	Clutch no stroke rubber	Gommino parastrappi frizione	6
207	A 98.106 34 00	Washer 18x31	Rasamento 18x31	1
208	A 20.015 31 11	Clutch crown	Campana frizione	1
209	A 20.251 83 00	Clutch crown plate	Piastra campana frizione	1
210	A 98.132 24 51	Rounded screw M6x14	Vite M6x14 bombata	6
211	P 20.371 00 91	Complete clutch hub	Mozzo frizione completo	1
212	A 90.197 00 00	Xeramic grease	Grasso Xeramic	1
213	A 90.199 00 00	Medium thread locking	Frenafilletti medio	1



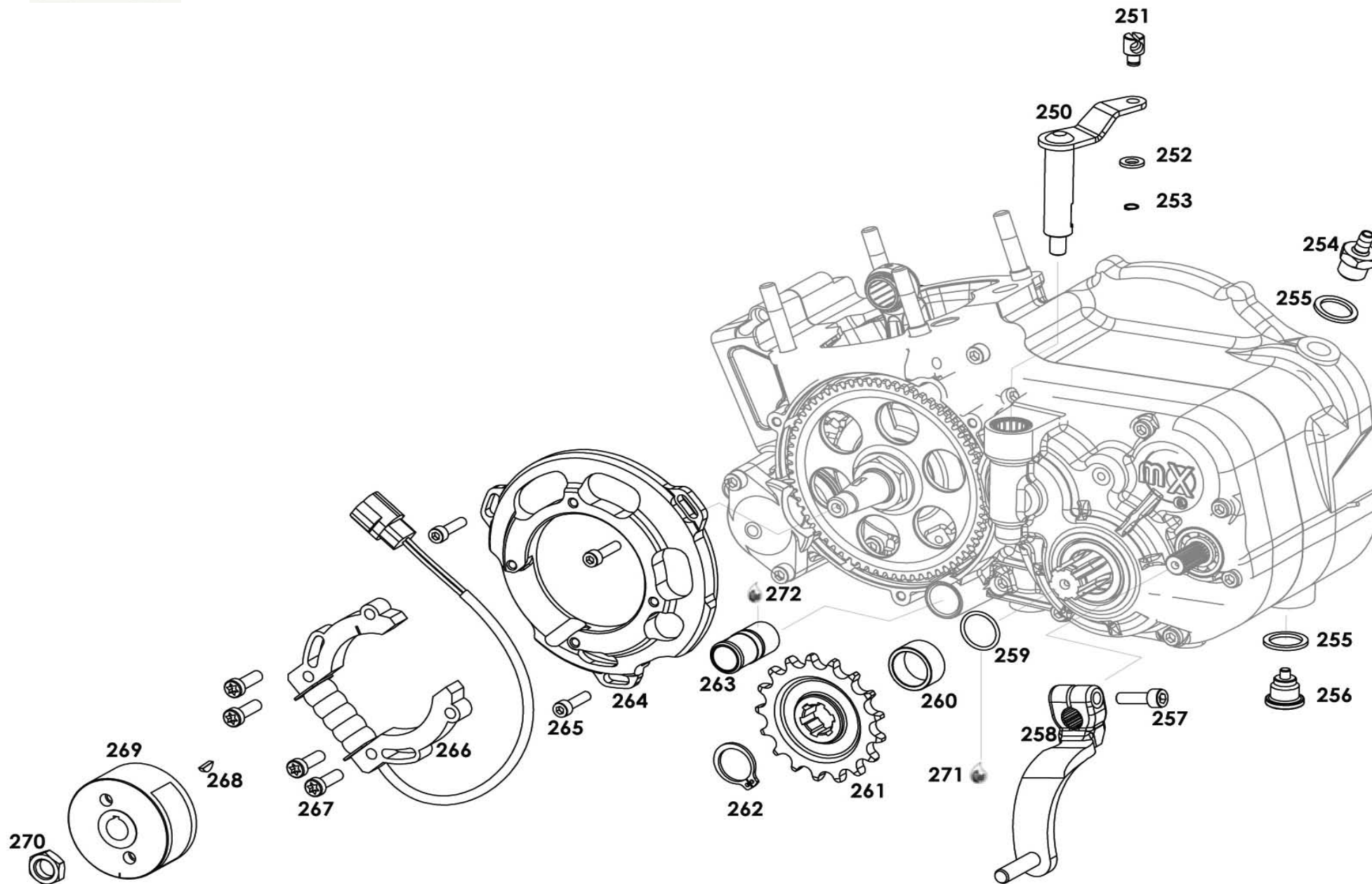


ELECTRIC START AND FUEL PUMP

<i>FIG.</i>	<i>CODE</i>	<i>DESCRIPTION</i>	<i>DESCRIZIONE</i>	<i>Q.TY</i>
220	A 90.526 00 00	Bendix - counter shaft	Bendix - Rinvio Avviam.	1
221	P 23.044 16 11	Bendix cover	Coperchio bendix Rotax	1
222	A 98.029 24 51	Screw M6x25	Vite M6x25	2
223	A 23.034 34 31	Steel Z66 starter wheel	Corona avviamento MxE Shifter Z66	1
224	A 98.154 00 00	Key 4x4x8	Chiavetta 4x4x8	1
225	P 10.105 00 11	Disc spring Ø20	Molla a tazza Ø20	1
226	A 90.416 43 00	Nut M20	Dado M20	1
227	A 90.527 00 00	Electric motor	Motorino avviamento	1
228	A 98.063 24 51	Screw M6x35	Vite M6x35 Brugola Brunita	2
229	A 23.012 16 00	Rubber for starter motor support	Gommino supporto motorino avviamento	1
230	A 23.004 41 11	Starter motor support	Supporto motorino avviamento	1
231	A 90.528 00 00	Starter brushes kit	Kit spazzole motorino avviamento	1
232	A 20.092 00 11	M7 pressure fitting	Raccordo depressione in ottone M7	1
233	A 98.168 24 00	Self locking nut M6x6	Dado autobloccante M6x6	4
234	P 12.172 00 00	Rubber tube Ø5xØ9x50	Tubo benzina in gomma d.5xd.9x50	1
235	A 90.432 00 00	Dell'Orto P34-PB2 fuel pump	Pompa benzina Dell'Orto P34-PB2	1
236	A 90.437 00 00	Silentblock Ø20x20	Antivibrante Ø20x20	4
237	A 90.442 00 00	T connection	Raccorodo a T	1
238	P 12.173 00 00	Rubber tube Ø5xØ9x140	Tubo benzina in gomma d.5xd.9x140	1
239	P 12.164 00 00	Rubber tube Ø5xØ9x205	Tubo benzina in gomma d.5xd.9x205	1
240	A 20.369 85 00	Fuel pump support	Supporto pompa benzina	1
241	A 98.177 00 00	Screw M6x10	ViteM6x10 svasata brunita	2
242	A 90.573 00 00	Fuel filter	Filtro benzina	1
243	A 90.307 00 00	Big silent block	Silent block grande	2
244	A 90.035 00 00	Coil ground cable	Cavo massa per bobina	1
245	A 90.613 00 00	PVL coil with hour meter counter (green)	Bobina PVL con contaore (Verde)	1
246	A 90.036 00 00	Spark-Plug NGK BR10 EG	Candela NGK BR10 EG	1
247	A 90.049 00 00	PVL connection spark plug	Pipetta candela PVL	1



EXTERNAL PARTS * PARTI ESTERNE





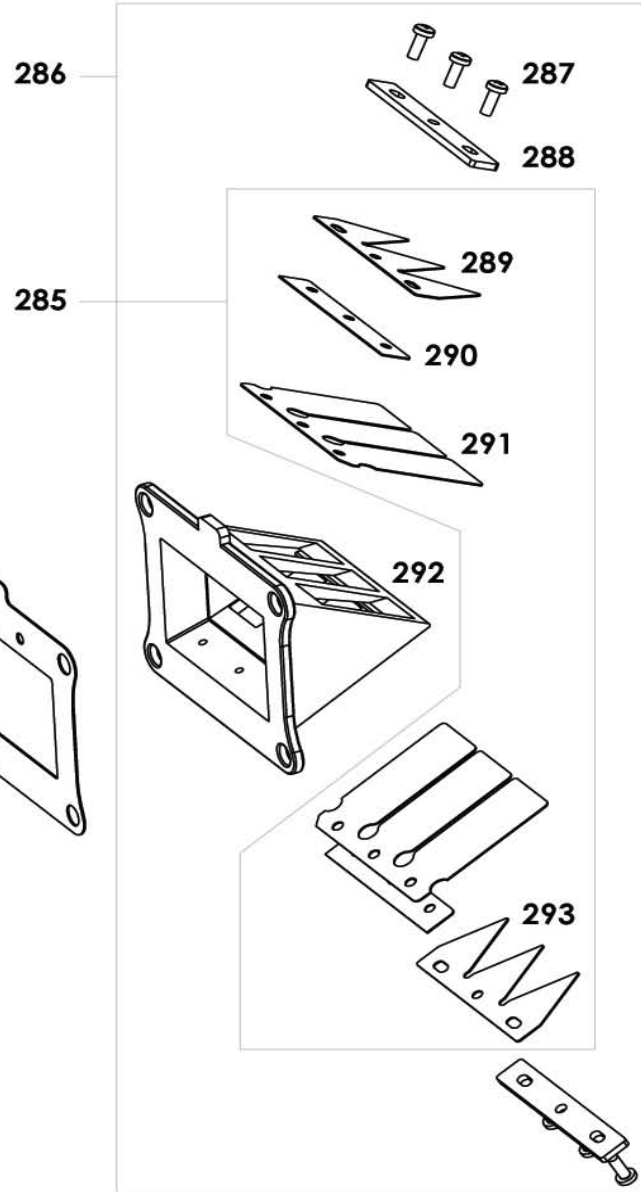
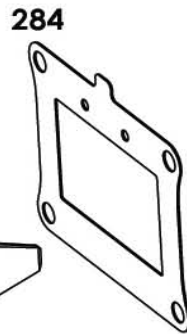
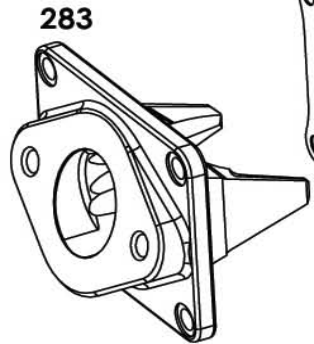
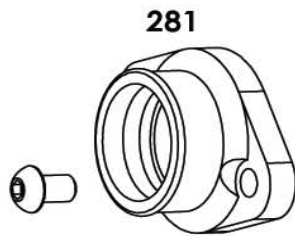
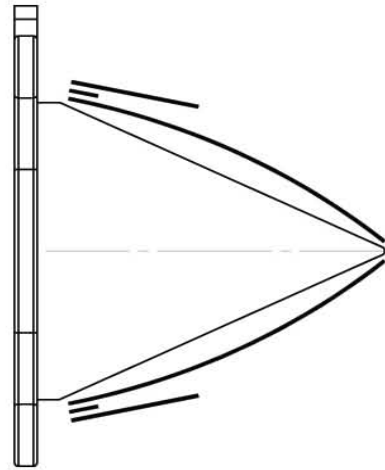
EXTERNAL PARTS * PARTI ESTERNE

FIG.	CODE	DESCRIPTION	DESCRIZIONE	Q.TY
250	P 20.139 00 11	Clutch lever	Leva comando frizione	1
251	A 20.064 33 11	Clutch lever nipple	Nipplo leva frizione	1
252	A 98.007 23 00	Washer 6.5-10x1.5	Rondella 6.5-10x1.5	1
253	A 98.107 24 00	Seeger D6	Seeger D6	1
254	A 20.091 31 11	Breather cap	Tappo sfiato	1
255	A 90.298 00 00	Cap gasket	Guarnizione tappo	2
256	A 90.297 00 00	Oil drain cap	Tappo scarico olio	1
257	A 98.096 24 51	Black screw M6x20	Vite M6x20 brugola brunita	1
258	A 20.107 00 11	Gear lever	Leva cambio	1
259	A 98.135 16 00	O-ring 18.77x1.78	O-ring 18.77x1.78	1
260	A 20.156 24 00	Chain pinion spacer	Boccola distanziale pignone	1
	A 20.166 34 00	Z14 Chain pignon	Pignone catena Z14	
	A 20.167 34 00	Z15 Chain pignon	Pignone catena Z15	
	A 20.168 34 00	Z16 Chain pignon	Pignone catena Z16	
261	A 20.169 34 00	Z17 Chain pignon	Pignone catena Z17	1
	A 20.170 34 00	Z18 Chain pignon	Pignone catena Z18	
	A 20.171 34 00	Z19 Chain pignon	Pignone catena Z19	
	A 20.172 34 00	Z20 Chain pignon	Pignone catena Z20	
	A 20.173 34 00	Z21 Chain pignon	Pignone catena Z21	
262	A 98.134 24 00	Shaft seeger D20	Seeger per abero D20	1
263	C 90.289 73 52	Water fitting	Raccordo acqua	1
264	A 23.035 31 11	Stator support	Supporto accensione PVL	1
265	A 98.058 24 51	M5x16 screw	Vite TCEI M5x16 brugola brunita	3
266	A 90.584 00 00	PVL stator without support	Statore PVL senza flangia	1
267	A 98.218 00 00	M6x20 stator screw	Vite M6x20 Torx zincata	4
268	A 98.020 24 00	Disc key 3x3.7	Linguetta disco 3x3,7	2
269	A 90.583 00 00	PVL rotor	Rotore PVL	1
270	A 20.151 53 52	Rotor nut	Dado rotore	1
271	A 90.197 00 00	Xeramic grease	Grasso Xeramic	1
272	A 90.199 00 00	Medium thread locking	Frenafilletti medio	1



INLET * IMMISSIONE

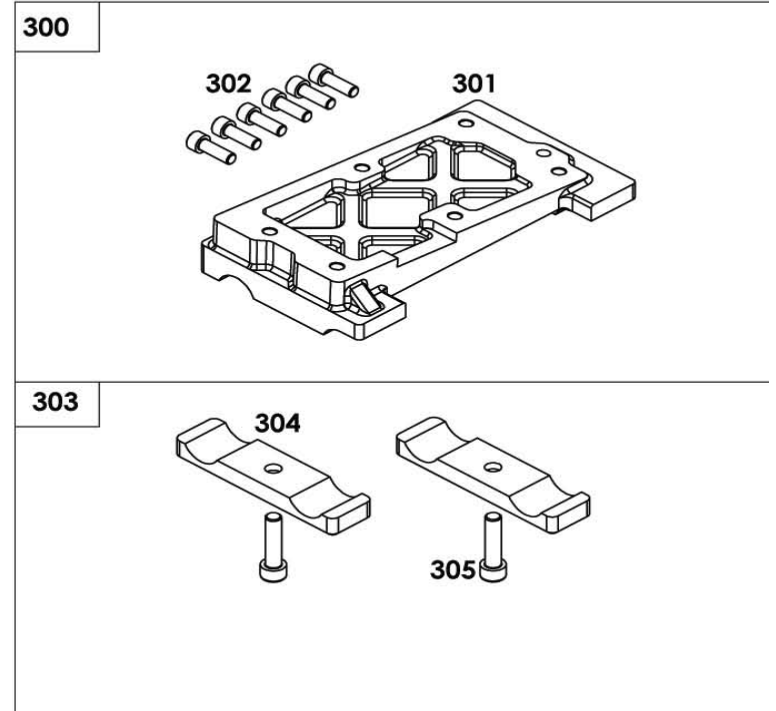
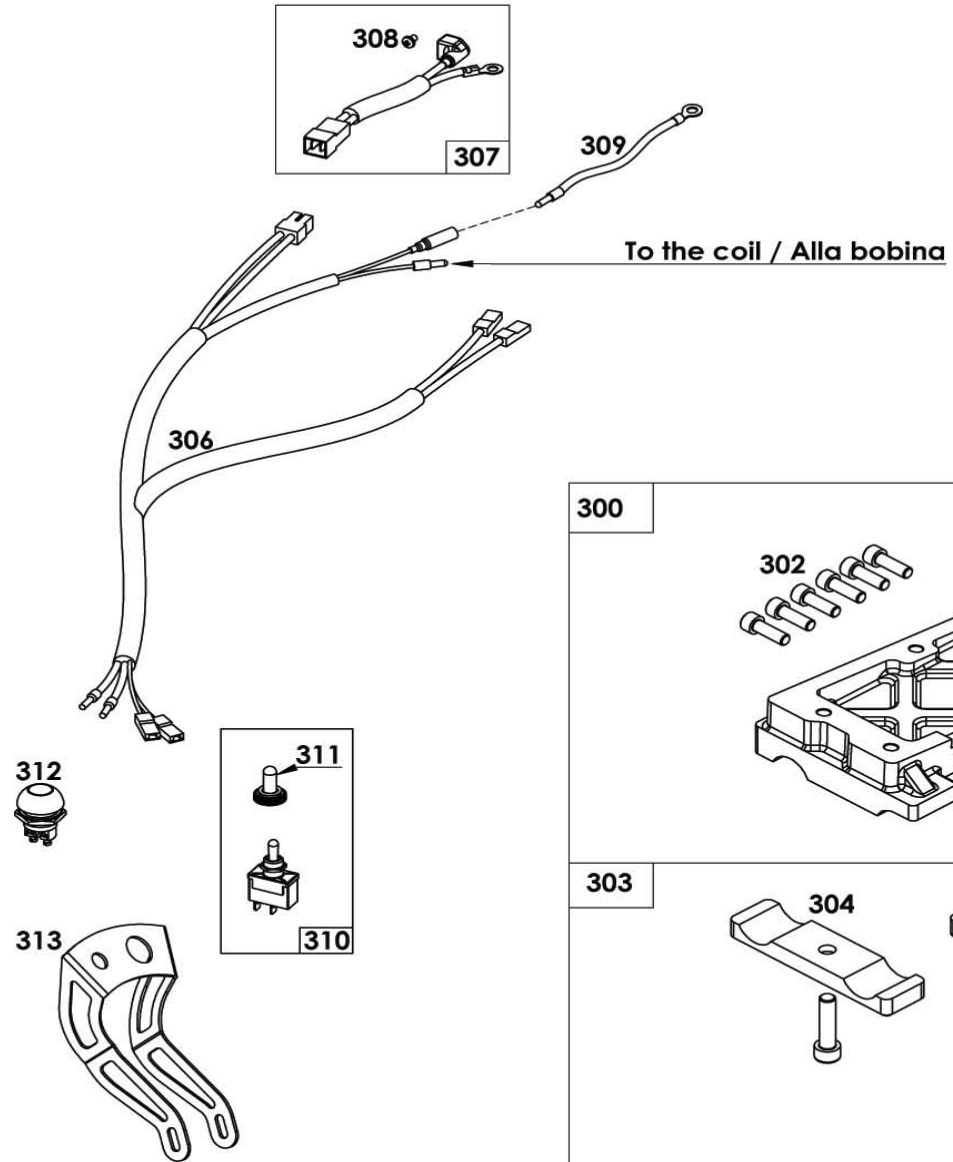
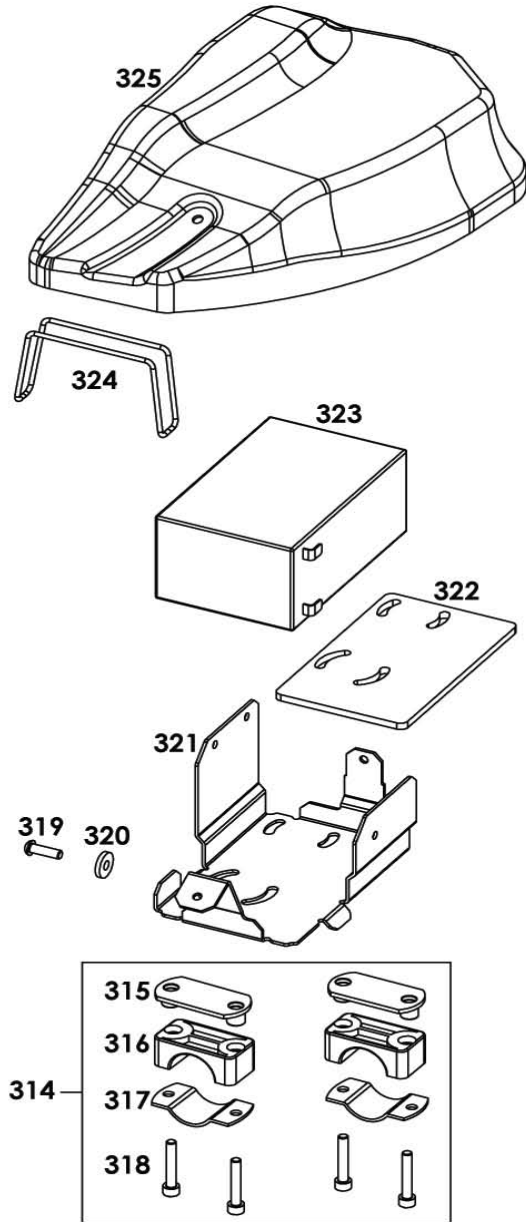
MONTAGGIO - ASSEMBLING





INLET * IMMISSIONE

<i>FIG.</i>	<i>CODE</i>	<i>DESCRIPTION</i>	<i>DESCRIZIONE</i>	<i>Q.TY</i>
280	A 98.220 24 52	Rounded screw M8x14	ViteM8x14 (bombata) brunita	2
281	A 90.299 00 00	Dell'Orto intake rubber manifold	Collettore carburatore Dell'Orto	1
282	A 98.179 00 00	Steel band 35/50	Fascetta a vite 35/50	1
283	C 23.003 41 55	Induction manifold	Convogliatore	1
284	A 20.138 00 00	Induction manifold gasket	Guarnizione convogliatore	1
285	A 20.376 00 91	Reeds kit	Kit petali	1
286	P 20.378 00 91	Complete reeds box	Gruppo lamelle completo	1
287	A 98.227 24 52	Reed screw M3x6	Vite M3x6 fissaggio lamelle	6
288	A 20.132 00 00	Lock plate for reed	Piastrina ferma lamelle	2
289	A 20.134 00 00	0.32 superior balancer	Balestrino superiore 0,32	1
290	A 20.135 00 00	Balancer spacer	Spessore 0,39 per balestrino	2
291	A 20.377 00 00	Reed	Petalo a tre in Vetronite	2
292	A 20.130 00 00	Reeds box	Supporto lamelle	1
293	A 20.133 00 00	0.43 inferior balancer	Balestrino inferiore 0.43	1
294	A 20.137 00 00	Reeds box gasket	Guarnizione gruppo lamelle	1



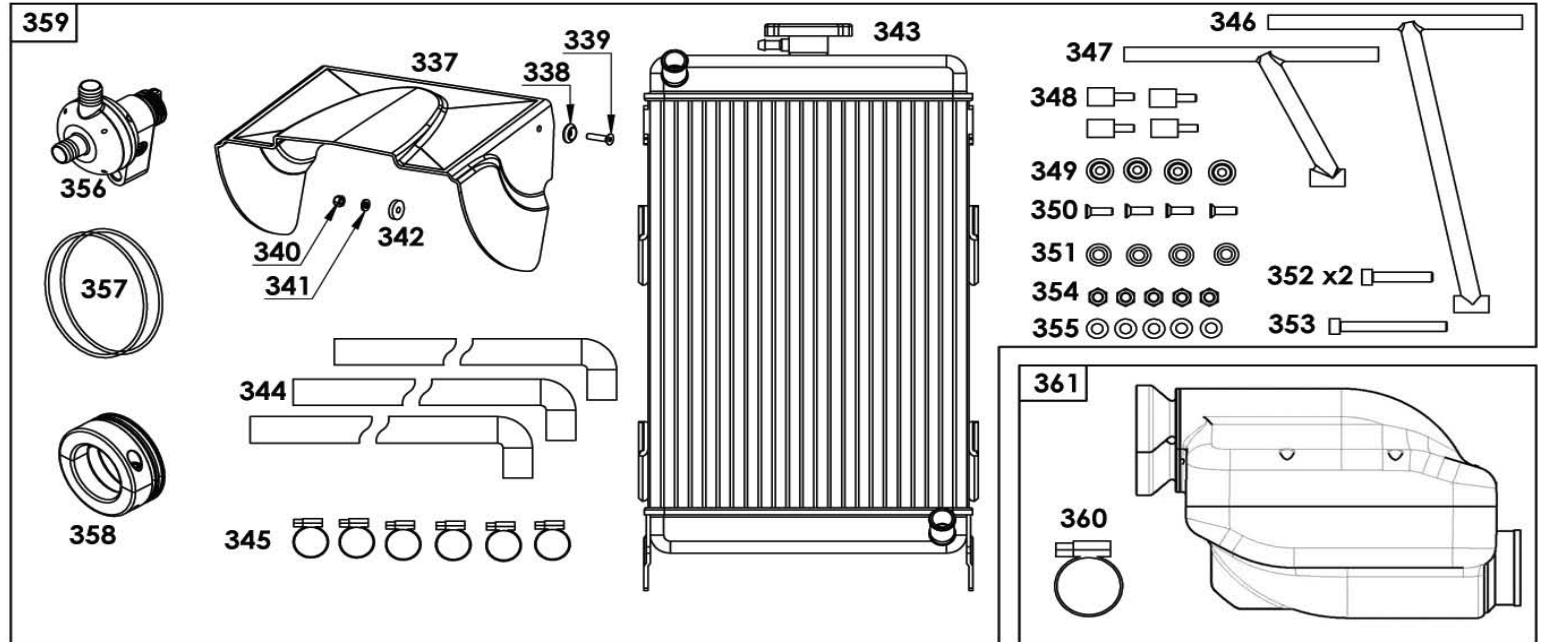
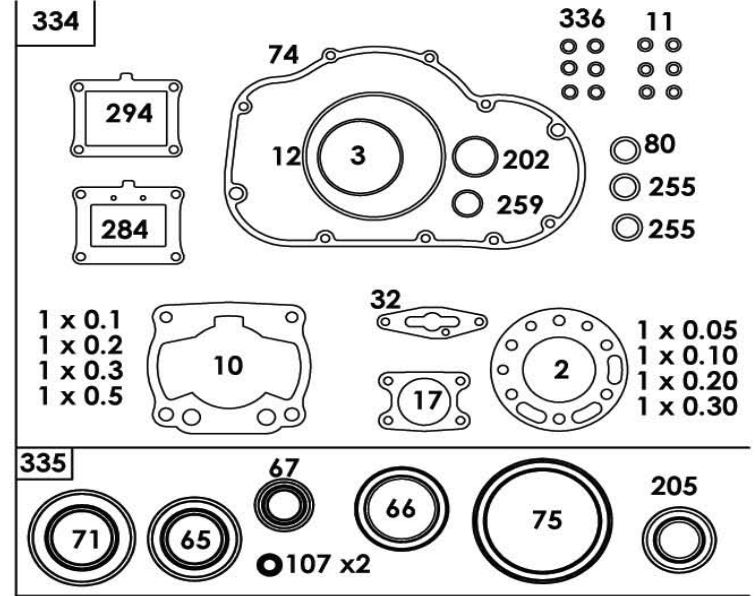
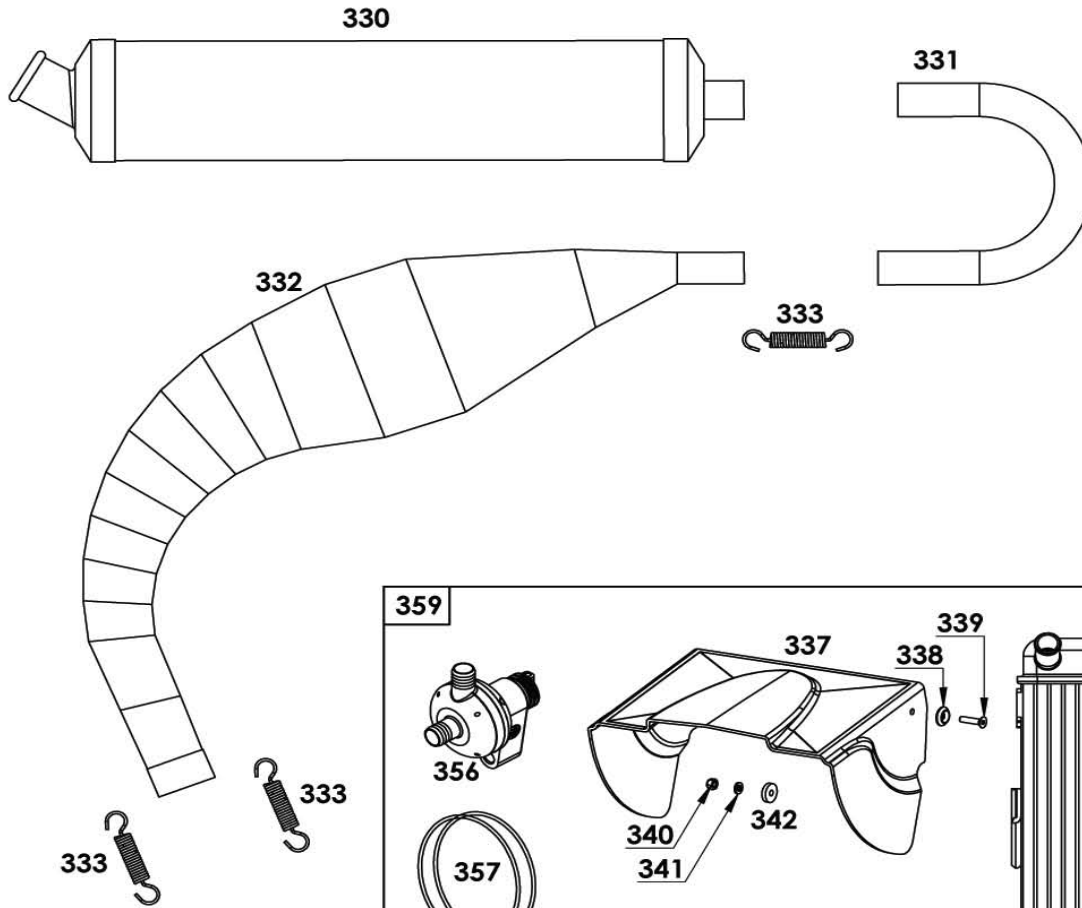


WIRING * CABLAGGIO

<i>FIG.</i>	<i>CODE</i>	<i>DESCRIPTION</i>	<i>DESCRIZIONE</i>	<i>Q.TY</i>
300	P 20.258 00 95	Inclined engine mount Kit	Kit piastra motore inclinata per 125cc a marce	1
301	A 20.190 00 00	Inclined engine mount	Piastra motore inclinata per 125cc a marce	1
302	A 98.073 24 52	Screw M8x25	Vite TCEI M8x25 (Brugola)	4
303	A 20.192 00 91	Clamps kit	Kit cavallotti	1
304	A 12.104 11 00	Engine mount clamp	Cavallotto per piastra motore D.32 90/92	2
305	A 98.074 24 52	Screw M10x40	Vite TCEI M10x40 (brugola)	2
306	A 90.555 00 00	Complete wiring	Cablaggio completo	1
307	A 90.554 00 00	Starter motor connector	Connettore Motorino Avviamento	1
308	A 98.221 24 52	Screw Philips M4x6	Vite M4x6 (bomb. intaglio a croce)	1
309	A 90.589 00 00	Ground cable for switch-off	cavo massa per interruttore di STOP	1
310	A 90.556 00 00	Stop switch lever	Interruttore di STOP a levetta	1
311	A 90.557 00 00	Stop switch lever rubber cap	Cappuccio per interruttore di STOP	1
312	A 90.558 00 00	Start button	Pulsante avviamento	1
313	A 90.559 83 51	Push-Button Support	Supporto Pulsanti cablaggio	1
314	P 10.236 00 91	Battery Kit Support Ø32	Kit Attacco Supporto Batteria Ø32	1
315	A 90.073 00 52	Clamp Plate for Battery Supp.	Piastrina attacco Supp. Batt	2
316	A 90.074 16 00	Plastic Clamp for Battery Supp. Ø32	Attacco in Plastica Supp. Batt Ø32	2
317	A 90.075 83 52	Metal Clamp for Battery Supp.	Attacco in Metallo Supp. Batt	2
318	A 98.070 24 52	Allen screw M6x35	Vite TCEI M6x35 (Brugola)	4
319	A 98.071 24 52	Rounded screw M6x20	Vite TBEI M6x20 (Brugola Bombata)	1
320	A 90.076 16 00	Rubber damper	Gommino Antivibrante	1
321	C 90.037 83 53	Battery support	Supporto Batteria	1
322	A 90.083 00 00	Support battery sponge	Spugna Supporto Batteria	1
323	A 90.053 00 00	Battery 12V 9 Ah	Batteria 12V 9 Ah	1
324	A 98.078 16 00	O-Ring (3400) Ø101,28x2,62	O-Ring (3400) Ø101,28x2,62	1
325	A 90.077 16 00	Battery support cover	Coperchio Supporto Batteria	1



COMPONENTS * COMPONENTI

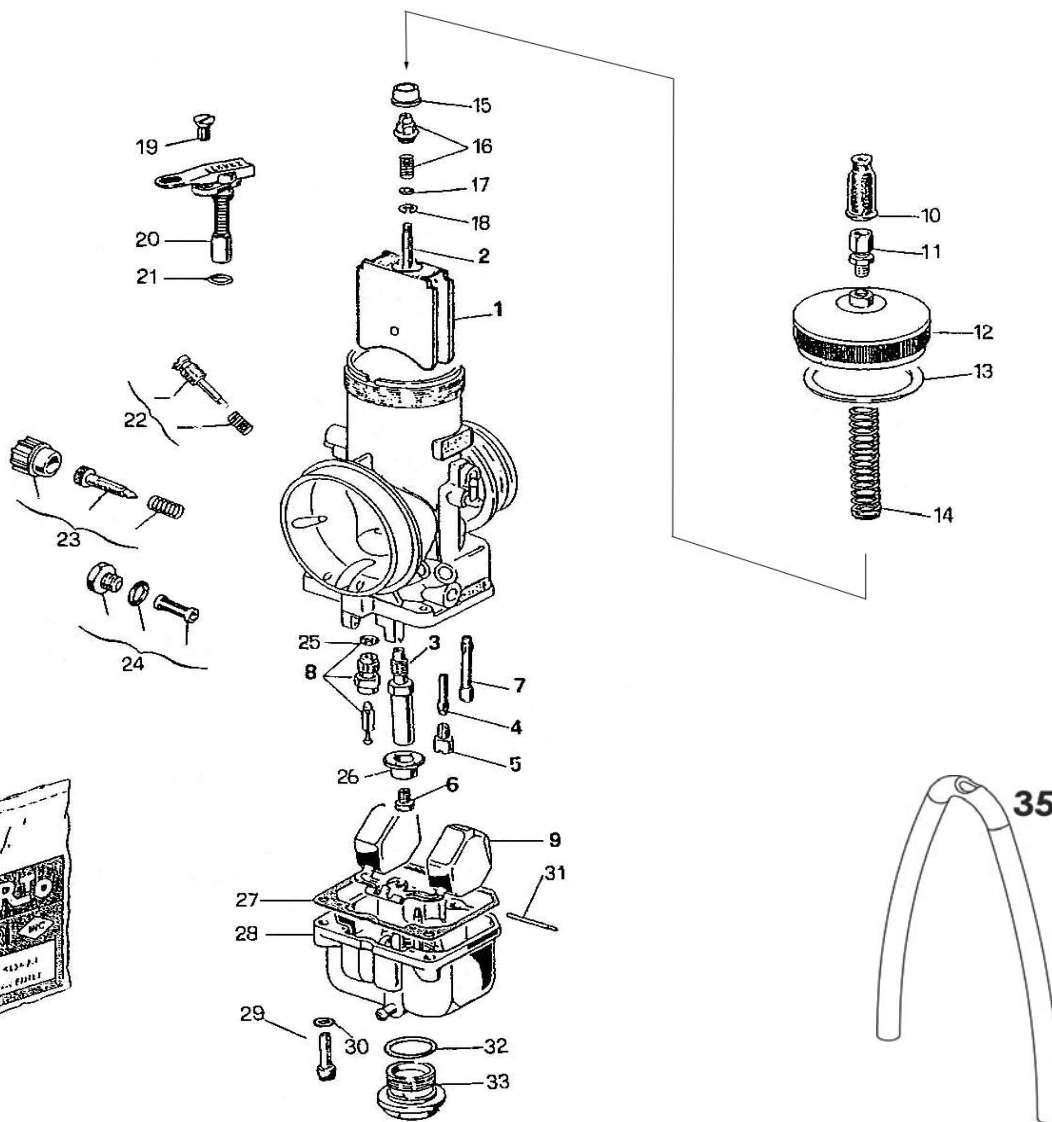
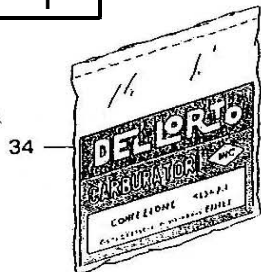




COMPONENTS * COMPONENTI

<i>FIG.</i>	<i>CODE</i>	<i>DESCRIPTION</i>	<i>DESCRIZIONE</i>	<i>Q.TY</i>
330	A 20.179 00 00	Short silencer	Silenziatore scarico corto	1
331	A 20.155 00 00	Silencer bend	Curva silenziatore	1
332	A 20.153 00 00	Exhaust pipe	Marmitta	1
333	A 90.196 00 00	Maxter exhaust spring	Molla marmitta Maxter	3
334	A 90.531 00 00	MxE gaskets and O-rings kit	Kit guarnizioni e O-rings MxE	1
335	P 20.188 00 91	Oil seals kit	Kit anelli tenuta	1
336	A 90.419 00 00	Spacer for O-ring for head	Spessore per Or prigioniero cilindro	6
337	A 12.290 00 00	Flap for radiator	Deflettore per radiatore	1
338	A 90.586 00 00	Countersunk Spring M6	Rondella Svasata M6	2
339	A 98.211 24 52	Screw TSEI M6x25	Vite TSEI M6x25 (Svasata)	2
340	A 98.112 24 00	Nut M6x6 metalblock	Dado M6x6 metalblock	2
341	A 98.007 23 00	Washer	Rondella	2
342	A 90.076 16 00	Rubber damper	Gommino Antivibrante	2
343	A 90.587 00 14	Radiator	Radiatore con tappo	1
344	A 90.434 00 00	Water pipe	Tubo acqua curvo	2
345	A 98.169 00 00	Steel band D 16-25	Fascetta stringitubo D 16-25	4
346	A 90.435 00 00	Radiator support long	Supp. Radiat. cromato lungo	1
347	A 90.436 00 00	Radiator support short	Supp. Radiat. cromato corto	1
348	A 90.437 00 00	Radiator silentblock Ø20x20	Antivibrante Ø20x20	4
349	A 90.438 00 00	Spacer Ø6	Spessore Ø6	4
350	A 98.132 24 51	Rounded screw M6x14	Vite TBEI M6x14 (Bombata)	4
351	A 90.439 00 00	Spacer Ø8	Spess. In acciaio Ø8	4
352	A 98.170 00 00	Screw M8x45	Vite M8x45 (brugola)	1
353	A 98.171 00 00	Screw M8x100	Vite M8x100 (brugola)	1
354	A 98.173 00 00	Nut M8	Dado M8 autobloccante	4
355	A 98.172 00 00	Spring Ø8	Rondella Ø8	4
356	A 90.567 00 00	Water pump (plastic)	Pompa acqua in plastica	1
357	A 90.568 00 00	Water pump driving belt	Cinghiolo trasmissione pompa acqua	2
358	A 90.569 00 00	Water pump pulley Ø50	Puleggia pompa acqua assale Ø50	1
	A 90.570 00 00	Water pump pulley Ø40	Puleggia pompa acqua assale Ø40	1
359	P 23.057 00 95	Water Kit Ø50	Kit acqua MxE per assale Ø50	1
	P 23.058 00 95	Water Kit Ø40	Kit acqua MxE per assale Ø40	1
360	A 98.174 00 00	Steel band D 60-80	Fascetta stringitubo D 60-80	1
361	A 90.571 00 00	Homologated air filter Ø30	Filtro aria omologato Ø30	1

CONTENUTO CONTENTS	QT.
13	1
21	1
25	1
27	1
32	1





DELL'ORTO VSHH 30 CS

FIG.	CODE	DESCRIPTION	DESCRIZIONE	Q.TY
*	A 90.614 00 00	Dell'Orto VSHH 30CS carburettor Shifter Setting	Carburatore Dell'Orto VSHH 30CS Tarat. Shifter	1
1	A 90.312 00 00	Throttle valve 50	Valvola gas 50	1
2	A 90.590 00 00	Conical needle K 98	Spillo conico K 98	1
3	A 90.314 00 00	Needle jet DQ 265	Polverizzatore DQ 265	1
4	A 90.315 00 00	Emulsionizing minimum jet CD 1	Getto emulsionatore minimo CD 1	1
5	A 90.368 00 00	Minimum jet 62	Getto minimo 62	1
6	A 90.620 00 00	Maximum jet 170	Getto massimo 170	1
7	A 90.318 00 00	Start jet 60	Getto avviamento 60	1
8	A 90.592 00 00	Needle valve 250	Valvola a spillo 250	1
9	A 90.320 00 00	Float 1	Galleggiante 1	1
10	A 90.321 00 00	Rubber cap	Cappuccio in gomma	1
11	A 90.322 00 00	Register cable guide	Vite tendifilo	1
12	A 90.323 00 00	Mixture chamber cover	Coperchio camera miscela	1
13	A 90.324 00 00	Mixture chamber cover gasket	Guarnizione coperchio camera miscela	1
14	A 90.325 00 00	Throttle valve spring	Molla richiamo valvola gas	1
15	A 90.326 00 00	Spring guide bottom	Fondello guida molla	1
16	A 90.327 00 00	Throttle valve nipple +spring	Nipplo valvola gas +molla	1
17	A 90.328 00 00	Washer	Rondella	1
18	A 90.329 00 00	Conical needle stopper	Fermaglio spillo conico	1
19	A 90.330 00 00	Starter locking screw	Vite fissaggio dispositivo avviamento	1
20	A 90.331 00 00	Starter	Dispositivo avviamento	1
21	A 90.332 00 00	Starter gasket	Guarnizione dispositivo avviamento	1
22	A 90.333 00 00	Air setting screw kit	Kit vite regolazione aria	1
23	A 90.334 00 00	Throttle valve setting screw kit	Kit vite regolazione valvola gas	1
24	A 90.335 00 00	Fuel filter kit	Kit filtro benzina	1
25	A 90.336 00 00	Needle valve gasket	Guarnizione valvola spillo	1
26	A 90.337 00 00	Bottom	Fondello	1
27	A 90.338 00 00	Float chamber gasket	Guarnizione vaschetta	1
28	A 90.339 00 00	Float chamber	Vaschetta	1
29	A 90.340 00 00	Float chamber screw	Vite fissaggio vaschetta	3
30	A 90.341 00 00	Washer for Float chamber screw	Rondella vite fissaggio vaschetta	3
31	A 90.342 00 00	Float pin	Perno galleggiante	1
32	A 90.343 00 00	Plug gasket	Guarnizione tappo	1
33	A 90.344 00 00	Float chamber plug	Tappo vaschetta	1
34	A 90.390 00 00	Gaskets kit	Kit guarnizioni	1
35	P 12.170 00 00	Vent carb tube	Tubetto sfiato carburatore	1



2011 SHIFTER CARBURATION

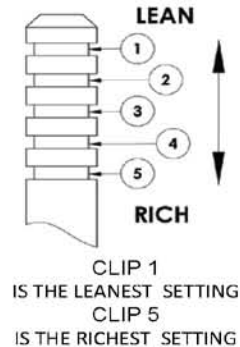
This table provides a correct approach to the carburation but to really optimize a very good carburation it must be tested and find the right balance between :

- Low settings (idle jet / sprayer / throttle valve / idle turns)
- Mid settings (needle height / throttle valve)
- Top settings (main jet / needle)

SETTINGS:

- oil mixture 4% XERAMIC CASTOR 2T
- Spark NGK 7282-105 or DENSO IW31 (or similar in type of gradation)

BASIC SETTINGS: Based on 20° of temperature and atmospheric pressure of 1000 mBar	MAX. JET	MIN. JET	SPRAYER	NEEDLE JET	NEEDLE		THROTTLE VALVE	FLOAT		NEEDLE VALVE	MIN. MIXTURE SCREW Opening turns
					Type	N° notch		Code	Mass		
	170	62	CD1	DQ265	K98	3	50	1	9 gr.	250	2
IMPORTANT: carburettor setting changes related to weather conditions.											
<i>Increases of temperature every 10°</i>	-2	Std		Std		-1					IW31
<i>Reduction of temperature every 10°</i>	+2	+2		265-266		+1					IW31
<i>Increases of pressure every 20 mBar atm.</i>	+2	+2		265-266		+1					IW31
<i>Reduction of pressure every 20 mBar atm.</i>	-2	Std		Std		-1					IW31
<i>Long circuit</i>	+3	Std		Std		+1					IW34
<i>Short circuit</i>	-2	Std		Std		-1					IW29
<i>Very wet track With air box AR</i>	-4	Std		Std		- 1 ½ (½ Washer)					IW29 o IW27



S
P
A
R
K

T
I
P
E

If your settings are too far from those values for a function about right , it is advisable to check the following points:

- Level tank
- Power system (fuel pump / return / up-air reservoir)
- Ignition - Reeds - Compression - Airtightness engine.

RUNNING-IN

- Set the carb a little richer
- Reach 30° on the trolley or 55° in the track without going over 11.000 rpm

1st SESSION OF 10min

- Max 12.000rpm from the 2nd to the 5th gear (full throttle)
- Max 11.000rpm for the 6th gear (full throttle)

2st SESSION OF 10min

- Normal rpm from the 2nd to the 5th gear (racing driving)
- Max 12.500g/min per la 6° marcia (a pieno gas)



TECHNICAL DATA

MOTORE: monocilindrico , ciclo 2 tempi con immissione lamellare orizzontale nel basamento,raffreddamento a ricircolo forzato del liquido, frizione a secco , cambio 6 rapporti,avviamento elettrico, accensione digitale con anticipo variabile.

CILINDRO: in alluminio e nicasil raffreddato a liquido.valvola pneumatica allo scarico

MODELLO	MAXTER MxE
ALESAGGIO X CORSA	54 x 54,45 mm
CILINDRATA	125 cm ³
POTENZA	29,5KW - 40 Hp a/at 13.000 rpm
VOLUME CAMERA COMBUSTIONE misurata con inserto candela omologato	min. 10,5 cc
SQUISH (misurato con metodo ponticello)	0,9 mm
PISTONE (ø min-max)	53,93 - 53,95 mm
GIOCO PISTONE/CILINDRO	0,06 - 0,07 mm
GIOCO ASSIALE ALBERO MOTORE	0,25 - 0,30 mm
DISTRIBUZIONE SCARICO	197° Max
DISTRIB. TRAVASO PRIMARIO	129° ±2°
DISTRIB. TRAVASO SECONDARIO	127° ±2°
ACCENSIONE	PVL
ANTICIPO MM	3,5 mm
CANDELA	NGK BR10 EG
REGOLAZIONE VALVOLA	Da chiusa - from closed N° 18 scatti - clicks
FRIZIONE A SECCO	dischi/disks 5+5
OLIO INGRANAGGI	400gr. Xeramic gear oil
MISCELA OLIO/BENZINA	4% - Xeramic Syntetic
TEMPERATURA DI UTILIZZO	45°C - 50°C
RODAGGIO	a medio regime 20' medium rpm

MXE

ENGINE: single cylinder , two-stroke cycle with air-intake from crankcases with horizontal reed block, cooling by forced liquid recirculation, dry clutch, 6 gears, electric starter, digital ignition with variable ignition.

CYLINDER: in aluminium and nicasil,liquid cooled pneumatic power valve on exhaust.

MODEL	MAXTER MxE
BORE X STROKE	54 x 54,45 mm
VOLUME OF CYLINDER	125 cm ³
POWER	29,5KW - 40 Hp a/at 13.000 rpm
VOLUME COMBUSTION CHAMBER measuring with spark plug insert	min. 10,5 cc
SQUISH (measured whit bridge method)	0,9 mm
PISTON (ø min-max)	53,93 - 53,95 mm
GAP PISTON/CYLINDER	0,06 - 0,07 mm
AXIAL GAP OF CRANKSHAFT	0,25 - 0,30 mm
EXHAUST OPENING ANGLE	197° Max
MAIN TRANSFER PORTS OPEN. AN	129° ±2°
SECOND. TRANS. PORTS OPEN. AN	127° ±2°
IGNITION	PVL
MM IGNITION TIMING	3,5 mm
SPARK - PLUNG	NGK BR10 EG
SETTING POWER VALVE	Da chiusa - from closed N° 18 scatti - clicks
DRY CLUTCH	dischi/disks 5+5
GEAR OIL	400gr. Xeramic gear oil
MIX FUEL/OIL	4% - Xeramic Syntetic
TEMPERATURE RANGE RUNNING	45°C - 50°C
RUNNING	a medio regime 20' medium rpm

MXE B PACKAGE ENGINE INFO P 23.059 00 99

A P 23.062 00 95 ENGINE BOX			
FIG.	CODE	DESCRIPTION	QT
*		MxE B engine	1
233	A 98.168 24 00	Self locking nut M6x6	4
234	P 12.172 00 00	Rubber tube Ø5xØ9x50	1
235	A 90.432 00 00	Dell'Orto P34-PB2 fuel pump	1
236	A 90.437 00 00	Silent block Ø20x20	2
237	A 90.442 00 00	T connection	1
238	P 12.173 00 00	Rubber tube Ø5xØ9x140	1
239	P 12.164 00 00	Rubber tube Ø5xØ9x205	1
240	A 20.369 85 00	Fuel pump support	1
241	A 98.177 00 00	Screw M6x10	2
243	A 90.307 00 00	Silent block Ø20x25	2
244	A 90.035 00 00	Coil ground cable	1
245	A 90.613 00 00	PVL coil with hour meter counter (green)	1
246	A 90.036 00 00	Spark-Plug NGK BR10 EG	1
247	A 90.049 00 00	PVL spark plug pipe	1
258	A 98.096 24 51	Black screw M6x20	1
257	A 20.107 00 11	Mx125 gear lever	1
301	A 20.190 00 00	Engine mount	1
302	A 98.073 24 52	Screw M8x25	6
*		wooden support for transport + srews	1
EXTERNAL DIMENSION : 39x29x40 Cm			
TOTAL WEIGHT: 16,5 Kg			

B P 23.063 00 95 EXHAUST AND OTHER PARTS BOX			
FIG.	CODE	DESCRIPTION	QT
242	A 90.573 00 00	Fuel filter	1
309	A 90.589 00 00	Ground cable for switch-off	1
306	A 90.555 00 00	Complete wiring	1
310	A 90.556 00 00	Stop switch lever	1
312	A 90.558 00 00	Start button	1
313	A 90.559 83 51	Push-Button Support	1
314	P 10.236 00 91	Battery Kit Support Ø32	1
319	A 98.071 24 52	Rounded screw M6x20	1
320	A 90.076 16 00	Rubber damper Ø6x20x4	1
321	C 90.037 83 53	Cromed battery support	1
322	A 90.083 00 00	Support battery sponge	1
323	A 90.053 00 00	Battery 12V 9 Ah	1
324	A 98.078 16 00	O-Ring (3400) Ø101,28x2,62	1
325	A 90.077 16 00	Battery support cover	1
330	A 20.179 00 00	Short silencer	1
331	A 20.155 00 00	Silencer bend	1
332	A 20.153 00 00	Exhaust pipe	1
333	A 90.196 00 00	Exhaust spring	3
*	A 90.614 00 00	Dell'Orto VHS 30CS carb. Shifter Setting	1
35	P 12.170 00 00	Vent carb tube	1
EXTERNAL DIMENSION : 69x40x18 Cm			
TOTAL WEIGHT: 11 Kg			
C P 23.064 00 95 RADIATOR KIT AND AIR FILTER BOX			
FIG.	CODE	DESCRIPTION	QT
359	P 23.057 00 95	Radiator Kit MxE for Ø50 axle	1
361	A 90.571 00 00	Air filter Ø30 RR NOX	1
EXTERNAL DIMENSION : 69x40x18 Cm			
TOTAL WEIGHT: 6,5 Kg			

A		P 23.062 00 95	ENGINE BOX	DESCRIZIONE	QT
FIG.	CODE	DESCRIPTION	DESCRIZIONE	QT	
*		MXE B engine	Motore MXE B	1	
233	A 98.168 24 00	Self locking nut M6x6	Dado autobloccante basso M6x6	4	
234	P 12.172 00 00	Rubber tube Ø5xØ9x50	Tubo benzina in gomma d.5xd.9x50	1	P R E E M
235	A 90.432 00 00	Dell'Orto P34-PB2 fuel pump	Pompa benzina Dell'Orto P34-PB2	1	R E A S O N T A T O
236	A 90.437 00 00	Silent block Ø20x20	Antivibrante Ø20x20 M-F	2	
237	A 90.442 00 00	T connection	Raccorodo a T FESTO in ottone	1	
238	P 12.173 00 00	Rubber tube Ø5xØ9x140	Tubo benzina in gomma d.5xd.9x140	1	
239	P 12.164 00 00	Rubber tube Ø5xØ9x205	Tubo benzina in gomma d.5xd.9x205	1	
240	A 20.369 85 00	Fuel pump support	Supporto pompa benz. Dellorto	1	
241	A 98.177 00 00	Screw M6x10	Vite M6x10 svasata brunita (brugola)	2	
243	A 90.307 00 00	Silent block Ø20x25	Silent block Ø20x25	2	
244	A 90.035 00 00	Coil ground cable	Cavo massa per bobina	1	
245	A 90.613 00 00	PVL coil with hour meter counter (green)	Bobina PVL con contaore (verde)	1	
246	A 90.036 00 00	Spark-Plug NGK BR10 EG	Candela NGK BR10 EG	1	
247	A 90.049 00 00	PVL spark plug pipe	Pipetta candela PVL con resist.	1	
258	A 98.096 24 51	Black screw M6x20	Vite TCEI M6x20 (brugola) brunita	1	
257	A 20.107 00 11	Mx125 gear lever	Leva cambio	1	
301	A 20.190 00 00	Engine mount	Piastra motore inclinata	1	
302	A 98.073 24 52	Screw M8x25	Vite TCEI M8x25 (brugola) brunita	6	
*		wooden support for transport + srews	Pannello legno + viti fissaggio	1	
EXTERNAL DIMENSION : 39x29x40 Cm				TOTAL WEIGHT: 16,5 Kg	

B		P 23.063 00 95	EXHAUST AND OTHER PARTS BOX	DESCRIZIONE	QT
FIG.	CODE	DESCRIPTION	DESCRIZIONE	QT	
242	A 90.573 00 00	Fuel filter	Filtro benzina CRG AFS.01016	1	
309	A 90.589 00 00	Ground cable for switch-off	cavo massa per interruttore di STOP	1	
306	A 90.555 00 00	Complete wiring	Cablaggio Sonik	1	
310	A 90.556 00 00	Stop switch lever	Interruttore di STOP a levetta	1	
312	A 90.558 00 00	Start button	Pulsante avviamento	1	
313	A 90.559 83 51	Push-Button Support	Supporto Pulsanti cablaggio semplice	1	
314	P 10.236 00 91	Battery Kit Support Ø32	Kit Attacco Supporto Batteria Ø32	1	
319	A 98.071 24 52	Rounded screw M6x20	Vite M6x20 (Brugola Bombata) zinc.	1	
320	A 90.076 16 00	Rubber damper Ø6x20x4	Gommino Antiv. Ø6x20x4	1	
321	C 90.037 83 53	Cromed battery support	Supporto Batteria cromato	1	
322	A 90.083 00 00	Support battery sponge	Spugna Supporto Batteria	1	
323	A 90.053 00 00	Battery 12V 9 Ah	Batteria 12V 9 Ah	1	
324	A 98.078 16 00	O-Ring (3400) Ø101,28x2,62	O-Ring (3400) Ø101,28x2,62 Supp. batt.	1	
325	A 90.077 16 00	Battery support cover	Coperchio Supporto Batteria in plastica	1	
330	A 20.179 00 00	Short silencer	Silenziatore scarico corto	1	
331	A 20.155 00 00	Silencer bend	Curva silenziatore	1	
332	A 20.153 00 00	Exhaust pipe	Marmitta	1	
333	A 90.196 00 00	Exhaust spring	Molla Marmitta	3	
*	A 90.614 00 00	Dell'Orto VHS 30CS carb. Shifter Setting	Carburatore VHS 30CS Tarat. Shifter	1	
35	P 12.170 00 00	Vent carb tube	Tubetto sfiato carburatore	1	
EXTERNAL DIMENSION : 69x40x18 Cm				TOTAL WEIGHT: 11 Kg	