

TILLOTSON HL-334B

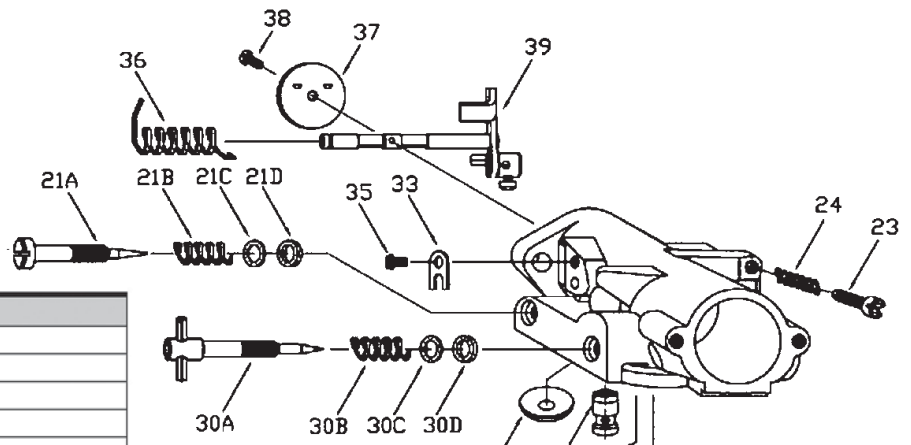
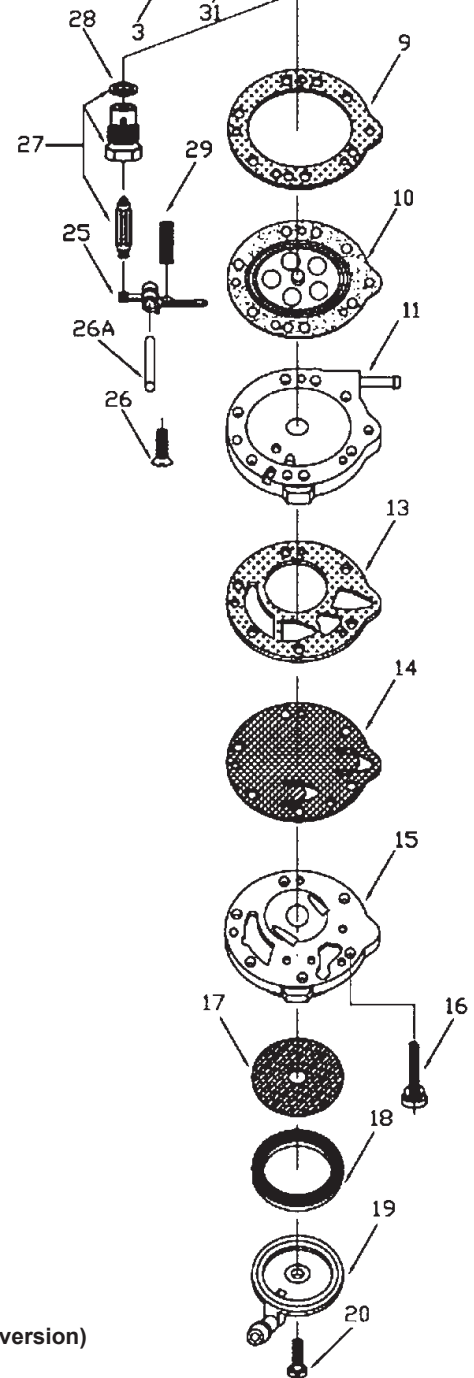


FIG	PART NUMBER	DESCRIPTION
3	179-55 *	BODY CHANNEL WELCH PLUG
9	16B-217 *+	DIAPHRAGM GASKET
10	237-600 *+	DIAPHRAGM
11	91A-275	DIAPHRAGM COVER HL-334AB
11B	91-1018	DIAPHRAGM COVER HL-334B
13	16B-223 *+	FUEL PUMP GASKET
14	237-141 *+	FUEL PUMP DIAPHRAGM
15	141-89	FUEL PUMP BODY
16	15C-51	FUEL PUMP BODY SKREW (6)
17	95-170	FUEL STRAINER SCREEN
18	16B-205 *	FUEL STRAINER COVER GASKET
19	91A-351	FUEL STRAINER COVER
20	15B-313	FUEL STRAINER COVER RETAINING SCREW
21A	43-388	IDLE MIXTURE SCREW
21B	24B-449	IDLE MIXTURE SCREW SPRING
21C	78A-256	IDLE MIXTURE SCREW WASHER
21D	44-270	IDLE MIXTURE SCREW PACKING
23	15C-9	IDLE SPEED SCREW
24	24B-131	IDLE SPEED SCREW SPRING
25	155A-27 *	INLET CONTROL LEVER
26	15B-329	INLET CONTROL LEVER FULCRUM SCREW
26A	32-79	INLET CONTROL LEVER FULCRUM PIN
27	233-710P *	INLET NEEDLE AND SEAT SET
28	16B-199 *	INLET SEAT GASKET
29	24B-299	INLET TENSION SPRING
30A	43-967	HIGH SPEED MIXTURE SCREW
30B	24B-449	HIGH SPEED MIXTURE SCREW SPRING
30C	78A-256	HIGH SPEED MIXTURE SCREW WASHER
30D	44-270	HIGH SPEED MIXTURE SCREW PACKING
31	363-503	NOZZLE CHECK VALVE
33	29-224	THROTTLE SHAFT CLIP
35	15C-19	THROTTLE SHAFT CLIP RETAINING SCREW
36	24B-381	THROTTLE SHAFT RETURN SPRING
37	14-407	THROTTLE SHUTTER
38	15C-29	THROTTLE SHUTTER SCREW
39	13-1894	THROTTLE SHAFT AND LEVER
	RK-117HL	REPAIR KIT
	DG-1HL	DIAPHRAGM AND GASKET SET



* Indicates contents of Repair Kit
 + Indicates contents of Diaphragm and Gasket Set



VA005-13 Carb Linkage Kit (minor version)