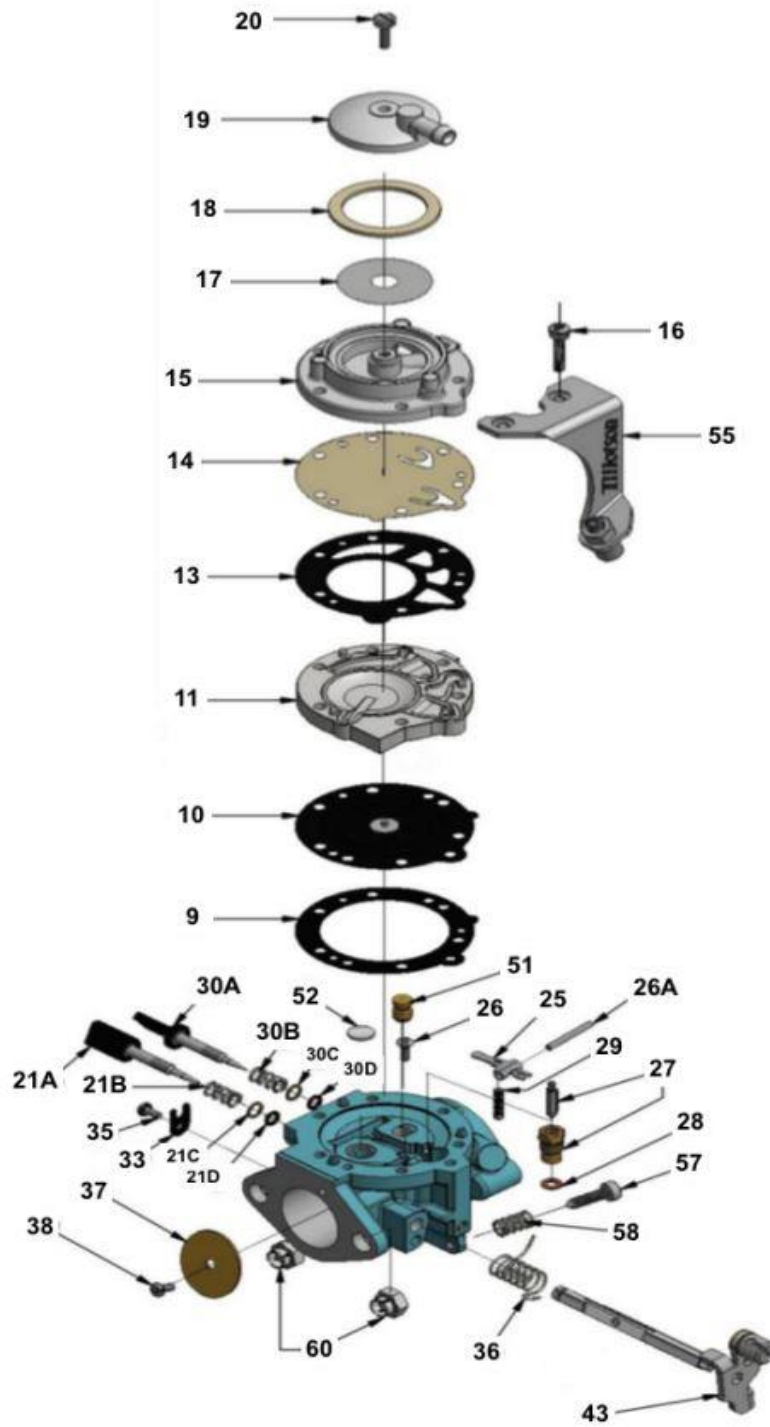


HW-44A Spare Parts Prices



ITEM	PART NO:	DESCRIPTION	
9	+ * 16-B406	DIAPHRAGM GASKET	
10	+ * 237-600	DIAPHRAGM	
11	91A-275	DIAPHRAGM COVER	
13	+ * 16-B407	FUEL PUMP GASKET	
14	+ * 237-223	FUEL PUMP DIAPHRAGM	
15	141-89	FUEL PUMP BODY	
16	15C-51	FUEL PUMP BODY SCREW	
17	95 - 170	FUEL STRAINER SCREEN	
18	+ * 16-B205	FUEL STRAINER COVER GASKET	
19	91-A251	FUEL STRAINER COVER	
20	15-B313	FUEL STRAINER COVER RETAINING SCREW	
21A	43-1029	IDLE MIXTURE SCREW	
21B	24-B449	IDLE MIXTURE SCREW SPRING	
21C	78A-256	IDLE MIXTURE SCREW WASHER	
21D	44-361	IDLE MIXTURE SCREW PACKING	
25	* 155A-27	INLET CONTROL LEVER	
26	15-B329	FULCRUM LEVER SCREW	
26A	32-79	FULCRUM LEVER PIN	
27	* 233-721P	INLET NEEDLE & SEAT SET	
28	16-B199	INLET SEAT GASKET	
29	24-B299	INLET TENSION SPRING	
30A	43-1030	HIGH SPEED MIXTURE SCREW	
30B	24B-449	HIGH SPEED MIXTURE SCREW SPRING	
30C	78A256	HIGH SPEED MIXTURE SCREW WASHER	
30D	44-361	HIGH SPEED MIXTURE SCREW PACKING	
33	29-224	THROTTLE SHAFT CLIP	
35	15-C19	THROTTLE SHAFT CLIP RETAINING SCREW	
36	24-B381	THROTTLE RETURN SPRING	
37	14-A118	THROTTLE SHUTTER	
38	15-C20	THROTTLE SHUTTER SCREW	
42	13-B216	THROTTLE SHAFT	
43	12-1220	THROTTLE LEVER ASSEMBLY	
44	15-C52	THROTTLE LEVER RETAINING SCREW	
52	363-318	IDLE NOZZLE	
54	80-160	MAIN PLUG	
55	136-562	CABLE BRAKET	
56	15-C67	CABLE BRACKET RETAINING SCREW	
57	15-C9	LIMITER SCREW	
58	24-B131	LIMITER SPRING	
60	81-377	CARBURETTOR MOUNTING NUT	
62	24-C-334	CABLE RETURN SPRING	
	RK-11HW	REPAIR KIT	
	DG-2HW	DIAPHRAGM & GASKET (STANDARD)	
	233-721P	INLET NEEDLE & SEAT SET	
* + INDICATES CONTENTS OF DIAPHRAGM & GASKET SET			
* INDICATES CONTENTS OF REPAIR KIT			
* + INDICATES CONTENTS OF DIAPHRAGM & GASKET SET			