

# Ilexam

INNOVATIVE  
JAPANESE TECHNOLOGY

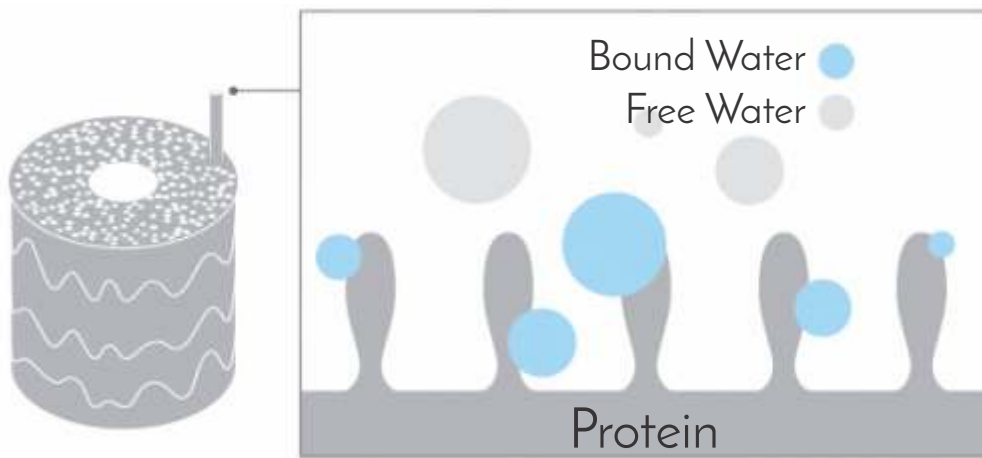
Your hair becomes moist and smooth  
with every hydrogen shower.

## Electrolytic Hydrogen Shower MHY-BS01



Hydrogen works to protect moisture, prevent damage, and strengthen hair. After showering, your hair will feel incredibly smooth to the touch. Our special electrolytic hydrogen showers will help you achieve beautiful hair.

Hydrogen showers increase the amount of bound water. This provides moisture to the hair, making it moist & smooth.

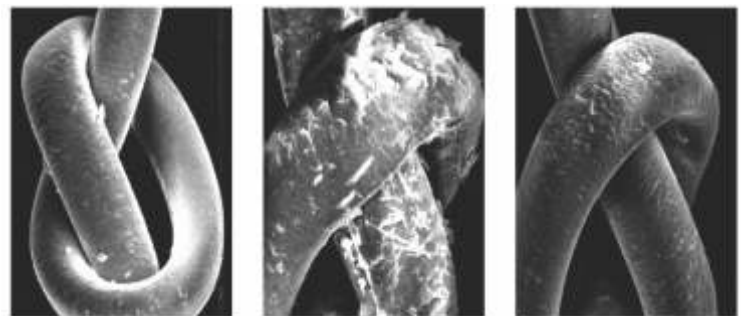


### What is Bound Water?

Bound water is the water bound to the surface of the hair protein by hydrogen bonding. Unlike free water, it doesn't evaporate, so it keeps moisture on your hair for a long time.

### Hair Cuticle (Surface Conditions) Comparison

Contains plenty of bound water, making it hard to damage. More effective with daily use. Taking a hydrogen shower will cause less damage to your hair than regular tap water.



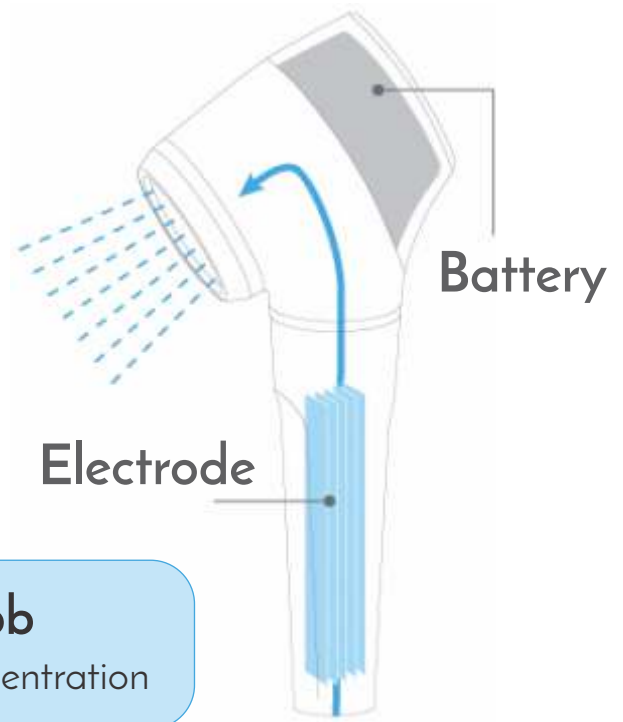
Before Treatment

### Contents of the test

Naturally dry hair bundles showered with warm water for 30 minutes. Leave the hair for 24 hours after tying the hair to damage the cuticle. Observe the surface condition with a high sensitivity microscope at 300x. \* In-house research

Hydrogen is generated by electrolysis of water. Because it is rechargeable, it can be used repeatedly and easily.

Hydrogen water is generated using the electrode, so there is no need to change the cartridge. The battery is a lithium-ion rechargeable battery that can be used for about 40 minutes when fully charged.



**~50 ppb**  
Hydrogen Concentration

Protects moisture with the power of hydrogen, for strong, supple hair that does not lose damage. The texture after shampoo is particularly smooth. A special electrolytic hydrogen shower that leads to beautiful hair .

## ENJOY A HYDROGEN SHOWER TO SUIT YOUR VARIOUS NEEDS



It Can Be Used Not Only For Bathrooms At Home, But Also For Beauty Salon, Spa's & Pet Shampoos.

Model number	MHY-BS01
Power supply	AC100-240V 50 / 60Hz
Waterproof specification	JIS IPX7 compliant
External Dimensions	7.2 x 11.3 x 26.4cm
Weight	about 460g
Accessories	Power adapter, Wireless charging, Mounting adapter

### ELECTROLYTIC HYDROGEN SHOWER

