

Lift and Dispense a Drum

>> [Click to Watch Video](#) <<

- You Control Lifting Height and Pouring Angle
- Removes Effort and Increases Productivity
- Power Lift and Tilt Options
- 360° Tilt Control in Either Direction
- Available with Spark Resistant Parts
- Capacity: 800 Lb. (363 kg) full drum (500 Lb. (227 kg) half-full* drum)

MADE IN USA

Easily handle a heavy drum with a Morse Hydra-Lift Karrier. Lift, move and control pouring of a 55-gallon (210 liter) drum weighing up to 800 Lb. (363 kg) with minimal effort. Handle a variety of drums by installing the correct accessories for your drum. Models with maximum pouring heights of 72" or 96" (183 or 244 cm).

You can raise and control dispensing as necessary. Increase pouring angle for full discharge, reduce to control the pour rate, or reverse to stop pouring and deliver partial drum contents.

Material is poured forward straight from the drum with variable lift and pour angles. Faucets, pipe, valve extensions, etc. may be attached to the drum.

Though most often used to lift and pour, the Hydra-Lift Karrier can also be used to lift drums on and off scales, platforms, conveyors or trucks, move drums to or from storage, or position drums of parts for hand access at work stations.



Model 400A-96-110 with 96" dispensing height and electric power lift and tilt.

MORCINCH Drum Handling System

- Automatically adjusts for 22" to 23.5" (56 to 59.7 cm) diameter drum
- Accepts Diameter Adaptors for smaller drums
- Accepts Top Rim Clamp or Bracket Assembly to handle a plastic drum
- Flexible cinch chain cover helps protect drum sidewall
- Alloy cinch chain and hinge
- Durable stress relief weld joints



Each Hydra-Lift Karrier Features

Heavy-duty hydraulic ram with a built-in flow control for a uniform, controlled speed of descent with even the heaviest drum.

Welded rectangular steel tube framework.

Maneuver on two 8" (20.3 cm) durable polyolefin wheels and two 4" (10.2 cm) swivel casters. A screw down floor lock.

Manual-Lift models have hydraulic hand pump with variable release valve for drum lift.

Manual-Tilt models have 30:1 reduction to make pouring your drum simple and easy.

Manual Tilt Controls (Power Options pg 2)

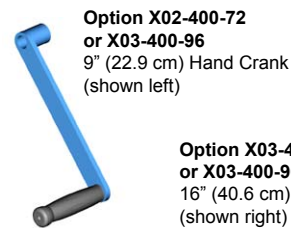
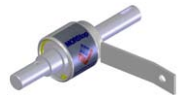


Model 400A-60 has hand crank tilt control.

Models 400A-72 and 400A-96 have pull chain and chain wheel tilt control.

Manual Tilt Control Options

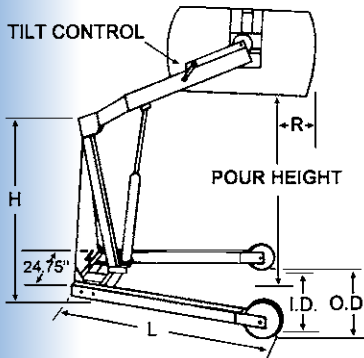
We recommend **Option # 3900i-P MORStop Tilt-Brake** to automatically hold drum tilt angle.



Option X02-400-72 or X03-400-96 9" (22.9 cm) Hand Crank (shown left)



Option X03-400-72 or X03-400-96 16" (40.6 cm) Hand Wheel (shown right)



Dimensions									
Model #	Maximum Dispensing Height	Tilt Control	R	H	L	O.D.	I.D.	Turning Radius	Domestic Ship Weight
400A-60	72" 183 cm	Hand Crank	6" 15 cm	55" 140 cm	60" 152 cm	44" 112 cm	37" 94 cm	6'	308 Lb. 140 kg
400A-72	72" 183 cm	Chain Wheel	6" 15 cm	55" 140 cm	60" 152 cm	44" 112 cm	37" 94 cm	6'	311 Lb. 141 kg
400A-96	96" 244 cm	Chain Wheel	-3" -7.6 cm	69" 175 cm	72.5" 184 cm	49" 124 cm	42" 107 cm	7'	379 Lb. 172 kg

Reach Beyond Front Wheels with a 55-Gallon Steel Drum			
Model #	Dispensing Height	Reach with Horizontal Drum	Reach with Drum Pouring at 45 Degrees
400A-60 or 400A-72	36" (91.4 cm)	16" (40.6 cm)	2" (5.1 cm)
	48" (121.9 cm)	15" (38.1 cm)	0
	60" (152.4 cm)	12" (30.5 cm)	-7" (-17.8 cm)
	72" (182.9 cm)	6" (15.2 cm)	- N/A -
400A-96	36" (91.4 cm)	11" (27.9 cm)	-1" (-2.5 cm)
	48" (121.9 cm)	13" (33 cm)	0
	60" (152.4 cm)	13" (33 cm)	-3" (-7.6 cm)
	72" (182.9 cm)	11" (27.9 cm)	-7" (-17.8 cm)
	84" (213.4 cm)	6" (15.2 cm)	-15" (-38.1 cm)
96" (243.8 cm)	-3" (7.6 cm)	-20" (-50.8 cm) at 90° (228.6 cm)	

* Half-full rating is based on tilt mechanism's capacity for handling a bottom heavy drum. A partially full drum with unbalanced and shifting load is harder to tilt than a full drum.

To order complete units with any of the power options below, use the power option number as a suffix on manual model number. Example: Model 400A-96-115 is 96" (244 cm) lift model with battery powered lift and tilt. Power-Tilt Options must be ordered on new units from the factory. All units with power options factory installed are shipped fully assembled.

Power Lift Options

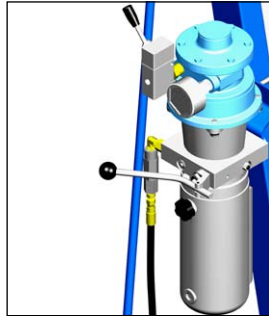
Power-Lift Options ease drum lifting, but retain manual tilt control. Hand crank tilt control is on 60" lift height units. Models with 72" and 96" lift heights have pull chain and chain wheel tilt control.

Power Option #	Motor Type	Motor Control	Ship Weight Adder
120	AC, 1HP/115V, TEFC	Switch, Cord, Plug	40 Lb. (18.1 kg)
124	Air, Vane Type	On/Off Valve	25 Lb. (11.4 kg)
125	DC, 12V	Built-in	85 Lb. (38.6 kg)



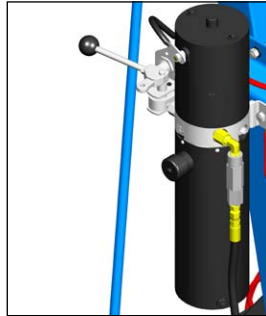
Electric Power Lift Option #120

Use switch to raise the drum. Lower the drum with manual release valve.



Air Motor Power Lift Option #124

Use on/off valve to raise the drum. Lower the drum with manual release valve.



Battery Power Lift Option #125

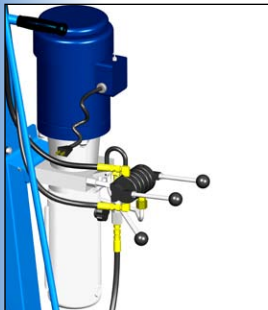
Self-contained battery power-lift. Use valve to raise and lower the drum. Separate charger is included.

Existing manual lift models can be converted to power lift. Order Power-Lift Kit for "Field installation," such as O-120FI, O-124FI, or O-125FI.

Power Lift and Tilt Options

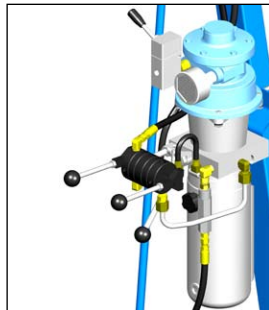
Power Lift and Tilt Options make drum handling easier and faster. There are two hand valve controls: One for the power-lift function and a second for power-tilt.

Power Option #	Motor Type	Motor Control	Ship Weight Adder
110	AC, 1HP/115V, TEFC	Switch, Cord, Plug	75 Lb. (34 kg)
114	Air, Vane Type	On/Off Valve	95 Lb. (43 kg)
115	DC, 12V	Built-in	120 Lb. (54.4 kg)



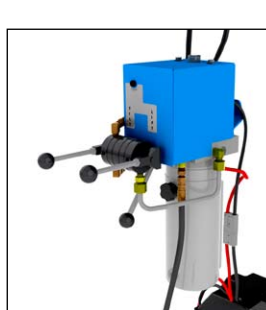
Electric Power Lift & Tilt Option #110

Hold momentary switch and lift valve to raise drum. Use second valve to control the hydraulically driven drum tilt. Lower the drum with manual release valve.



Air Power Lift and Tilt Option #114

Hold on/off valve and lift valve to raise the drum. Use a second valve to control the hydraulically driven drum tilt. Lower the drum with manual release valve.



Battery Power Lift and Tilt Option #115

Hold momentary switch and lift valve to raise drum. Use 2nd valve to control drum tilt. Lower drum with manual release valve. Charger is included.

MORcinch Options

The MORcinch drum holder on Hydra-Lift Karriers is designed to handle a 55-gallon (208 liter) steel or fiber drum. It automatically adjusts from 22" to 23.5" (56 to 59.7 cm) in diameter. The cinch chain with pawl and ratchet mechanism is used to secure the drum in the holder. To handle other drums, order one of the following:

The **Bracket Assembly** provides a brace at top and bottom of your drum to prevent it from slipping lengthways through the drum holder. The Bracket Assembly is required to handle a rimless plastic drum, and recommended to more securely handle a fiber drum. It adjusts for 31" to 39" (79 to 99 cm) tall drum.

Part # 4556-P Bracket Assembly.

Part # 4556M-P Spark Resistant Bracket Assembly.

The **Top Rim Clamp** grips the upper rim of your drum to prevent it from slipping through the drum holder. Use to handle a 55-gallon rimmed plastic or fiber drum. To handle a 55-gallon plastic drum with top rim, you must install either the Bracket Assembly or the Top Rim Clamp.

Part # 4560-P Rim Clamp Assembly.

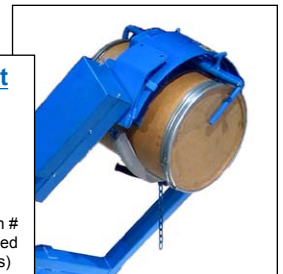
Part # 4560M-P Spark Resistant Rim Clamp Assembly.



Web Strap with Ratchet



MORcinch™ Drum Holder with Option # 5115i-P Web Strap and Ratchet installed (not for use on spark resistant models)



For a smaller diameter drum, **Diameter Adaptors** install easily without tools and are quickly removed. Diameter Adaptors for 17.5" (44.5 cm) diameter or smaller have brackets at top and bottom of the drum. They adjust for a drum up to 38" (96.5 cm) tall. Spark resistant and stainless steel Diameter Adaptors are also available.

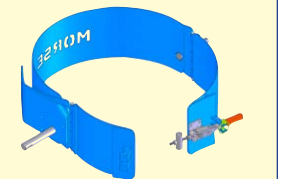
DIAMETER ADAPTORS

DIAMETER ADAPTORS	SPARK RESISTANT DIAMETER ADAPTORS	STAINLESS STEEL DIAMETER ADAPTORS	FITS DIAMETER	DOMESTIC SHIP WEIGHT
55/30-20.5	55/30M-20.5	55/30SS-20.5	20" to 20.5" (50.8 to 52.1 cm)	20 Lb. (9 kg)
55/30-19	55/30M-19	55/30SS-19	18.5" to 19" (47 to 48.3 cm)	24 Lb. (11 kg)
55/30-17.5	55/30M-17.5	55/30SS-17.5	17" to 17.5" (43.2 to 44.5 cm)	35 Lb. (16 kg)
55/30-16	55/30M-16	55/30SS-16	15.5" to 16" (39.4 to 40.6 cm)	35 Lb. (16 kg)
55/30-14.5	55/30M-14.5	55/30SS-14.5	14" to 14.5" (35.6 to 36.8 cm)	36 Lb. (16 kg)

Optional 3-Piece Drum Holder

Option # G-400

The optional 3-Piece Drum Holder is for handling only a 22.5" (57.2 cm) diameter 55-gallon (208 liter) steel drum. It surrounds your drum with a hinged metal band.





Model 400A-96-110

Hydra-Lift Karrier with 96" lift height, electric powered drum lift and tilt control.



Model 400A-72-114

Hydra-Lift Karrier with 72" lift height, air powered drum lift and tilt control.



Model 400A-72-115

Hydra-Lift Karrier with 72" lift height, battery powered drum lift and tilt control.



Model 400A-72-120

Hydra-Lift Karrier with 72" lift height, electric powered drum lift, and manual pull chain drum tilt control.



Model 400A-72-124

Hydra-Lift Karrier with 72" lift height, air powered drum lift, and manual pull chain drum tilt control.



Model 400A-72-125

Hydra-Lift Karrier with 72" lift height, battery powered drum lift, and manual pull chain drum tilt control.

MADE
IN
USA