

LONE WOLF
UNDERCOVER™
Trail Camera



INSTRUCTION MANUAL

THANK YOU FOR CHOOSING OUR UNDERCOVER™ TRAIL CAMERA.

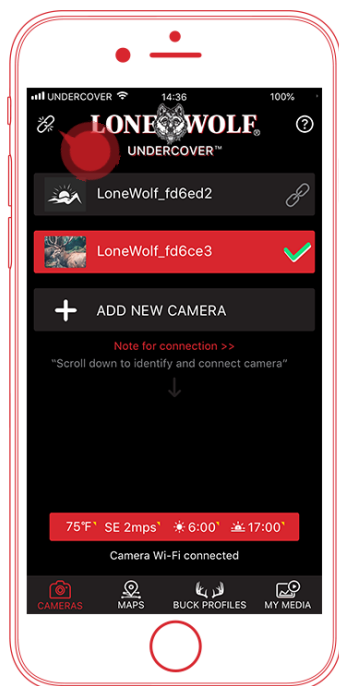
The brand that brought you the greatest most innovative mobile hunting solutions of all time is now the leader of the pack in trail camera technology!

The Undercover™ trail camera by Lone Wolf is like nothing you have seen from other camera outfits. Every aspect of this camera has been single handedly designed with hunting in mind. From our patent pending 360° auto lock leveling system that allows you to effortlessly mount and level your camera in virtually any situation, to our Tree-Dimensional® Concealment Skins that provide the highest level of camouflage available. The overwhelming amount of innovation comprised to bring you the Undercover™ Trail Camera will leave you with no doubt what will be capturing the images of your next hit list bucks.

LONE WOLF - UNDERCOVER™ APP

Forget about squinting to look at tiny screens or some ridiculous series of up-down buttons to set or adjust options. With the Undercover™ App by Lone Wolf, you can effortlessly adjust settings, transfer and store images, create custom photo maps, and even aim your camera all from your smartphone!

You may download the APP by searching “**Lone Wolf Undercover**” in either Google Play or the Apple App store.



Lone Wolf Undercover™ APP

- WIFI Photo/Video Retrieval
- Ultimate AIM Technology
- Prime Time Detection
- Low Impact Surveillance Mode



Contents

1. Introduction	- 1 -
2. Quick Start	- 3 -
2.1 What is in the Box.....	- 3 -
2.2 Getting the camera ready	- 3 -
2.3 Setting up your camera	- 4 -
2.4. How to use the App.....	- 5 -
3. APP Functionality	- 6 -
4. Camera Settings	- 8 -
5. Specifications	- 12 -
6. Power Supply	- 13 -
7. SD Card Selection	- 14 -
7.1 Attention	- 15 -
8. Troubleshooting	- 15 -
9. Warranty	- 18 -
FCC REGULATIONS	- 18 -

1. Introduction

Front View



- ① Mode button
- ② Mode indicator light
- ③ 32pcs IR LED
- ④ Lens: 100° FOV
- ⑤ PIR : Motion Detector
- ⑥ Light sensor
- ⑦ Battery indicator light
- ⑧ ON/OFF Button
- ⑨ ON/OFF indicator light

Side View



Back View



- ⑩ Tree-Dimensional[®] Concealment Skin
- ⑪ Auto Lock Leveling System
- ⑫ Lock/Cable Attachment Tabs
- ⑬ Quick Clip Attachment Bracket

Operation & Light Indicator Introduction:

ON/OFF Button	
Operation	ON/OFF Indicator light
Hold the ON/OFF button for 3-4 seconds to turn on the camera	<p>* When the camera is turned on, the ON/OFF light will appear orange. After it detects the SD card the light will turn green. You can then connect your smartphone with your camera's WIFI.</p> <p>* After you connect your camera's WIFI the ON/OFF LED light will blink green</p> <p>* If your camera's WIFI is not connected within 2 minutes after the WIFI turns on, the ON/OFF light will blink in red for 5 seconds and enter into arm mode.</p> <p>* If the ON/OFF light blinks orange, it means there is an SD card error. Please reinsert the SD card or change the SD card.</p>
Hold the ON/OFF button for 3-4 seconds to turn off the camera	<p>* The ON/OFF LED light will turn red and then all lights will turn off.</p>
Mode Button	
Operation	Indicator light
Single press the mode button to change the camera mode	The selected camera mode LED light will illuminate in green.
Hold the mode button for 5 seconds, this will enter the into arm mode	The ON/OFF LED indicator light will blink red for 5 seconds, then all of the LED lights will turn off. The camera is entered into arm mode and ready.
Hold the mode button for 10 seconds to reset the camera	During reset, all LED lights will first turn off then they will illuminate. After all LED lights illuminate the camera is reset successfully. After the camera is reset, all the camera settings will come back to factory default.

Battery Indicator Light: All four LED lights will illuminate in orange when the camera has full battery power. When one LED light illuminates and blinks, this is a warning that the battery level is less than 5% and the batteries should be replaced.

2. Quick Start

2.1 What is in the Box



Trail camera x1

Instruction manual x1

Mounting strap x1

Tree-Dimensional® Concealment Skin x1

2.2 Getting the camera ready

1. Insert the batteries

Open camera lid, use the pull tab to pull out battery tray to insert batteries.

Note: For better performance, please choose the “Battery Type” of the batteries in the camera settings.



2. Inserting the SD card

Note: 4-32GB SD card is recommended. Please insert it with correct direction as marked.



2.3 Setting up your camera

1. Power on the Camera

Hold the ON/OFF button for 3-4 seconds. Once the camera turns on the battery and the mode lights will illuminate. Once the camera is on and ready the ON/OFF light will be green.

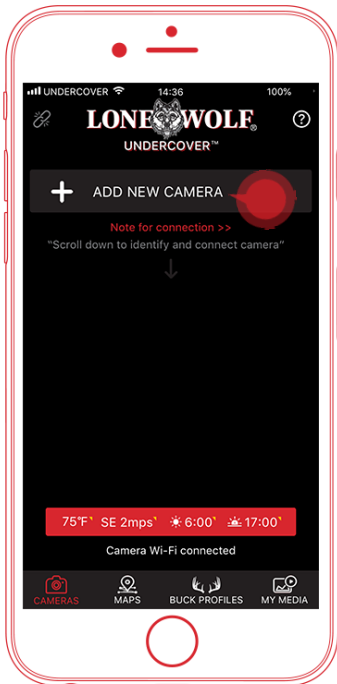
Note: If the ON/OFF light is blinking orange, it means the SD card is not inserted correctly, or something is wrong with the SD card. Please reinsert the SD card or insert a new SD card.

2. Connecting to WIFI

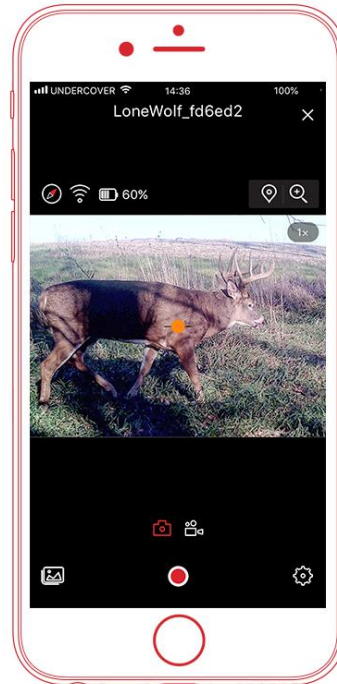
When the ON/OFF light turns green, the WIFI is now enabled and you can use your phone to connect to the camera's WIFI. The WIFI will be labeled "LoneWolf_*****". The default password for the WIFI is "abc.1234". Once you have successfully connected to WIFI the ON/OFF green light will start blinking.

Note: If you forgot the name of the device, you can quick press the ON/OFF button three times. A "CamInfo,.txt" file will be generated on your SD card which shows you the information.

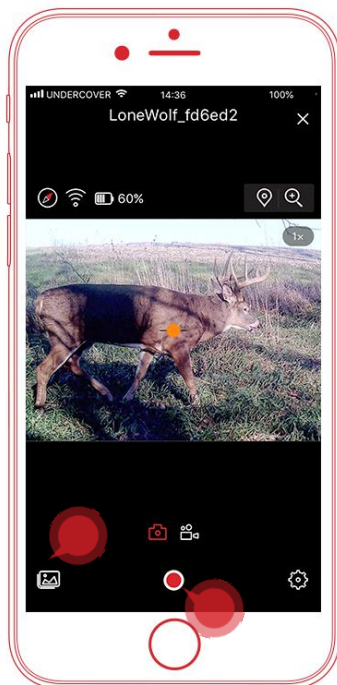
2.4. How to use the App



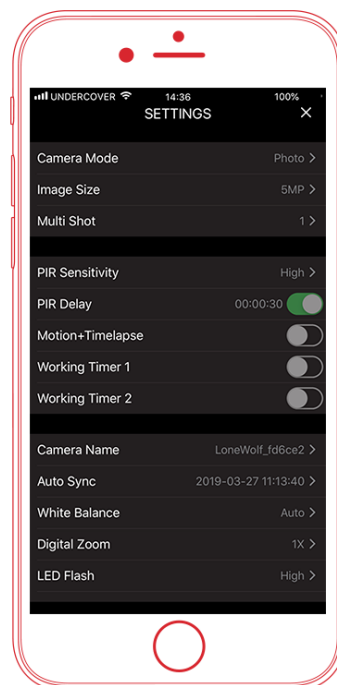
1. After you connect to the camera's WIFI, open the Lone Wolf Undercover App. Click "Add New Camera" then follow the instructions to connect the camera.



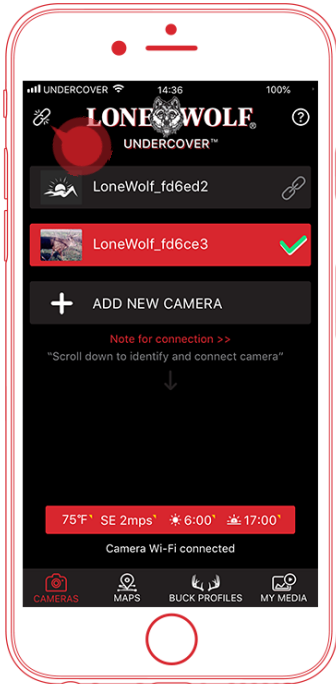
2. After you added the camera successfully, you can click the camera on the home page to enter into AIM screen of the camera.



3. If you click the shutter button on the AIM screen, you can manually take a photo or a video. If you click the image icon it will take you to view all of the images on the SD card in your camera.



4. After your camera is set up, you can click the settings icon in the bottom right hand corner of the AIM screen. This will then take you to the settings for the camera.



5. After you finished aiming your camera and adjusting the settings, go back to the App home page and click on the disconnect icon to disconnect the camera's WIFI. The ON/OFF light will illuminate red for 3 seconds and the camera will enter into motion detect mode per your settings.

Note: Please remember to disconnect the camera's WIFI when you are finished using the App. If you do not disconnect, the camera will not enter into motion detection mode and will continuously consume battery power.

3. APP Functionality

Operation is the single most important part of running cameras. Forget about squinting to look at tiny screens or some ridiculous series of up down buttons to set or adjust options. With the Undercover™ APP by Lone Wolf you can effortlessly adjust settings, transfer and store images, create custom photo maps, and even aim your camera all from your smart phone! The cutting edge features included with the app operation without a doubt provides the most straight forward efficient trail camera experience possible.

AUTO SYNC - App automatically sets the time, date, and year from phone settings.

WIFI PICTURE RETRIEVAL - Retrieval of photos from camera to smartphone using WiFi

ULTIMATE AIM TECHNOLOGY - This feature analyzes optimal photo

distance and allows you to see what your camera sees while on the smartphone App and aim your camera down to the inch with a target point on the screen.

LOW IMPACT SURVEILLANCE MODE - This feature will allow you to use the digital zoom on the camera to lock in and arm the camera. This will allow you to get further away from the desired camera location and not contaminate the area with human scent.

SPY MODE - This feature will allow you to access and watch video real time from your smartphone app when in WiFi range.

PRIME TIME DETECTION - The App analyzes the data of all pictures taken in a 24 hour period time. At a glance, you can see the best a.m. and best p.m. time within the hour with the most photos have been taken.

DIRECTION DETECTION - Integrated compass in the App is displayed on the aiming screen to ensure the camera is set up in the optimal direction for sunrise and sunset.

IN-APP ZOOM AND CROP - Zoom and crop your trail camera photos right within the app and save them directly to your phone.

CUSTOM MAP CREATION - Create property maps and pin cameras, scouting areas and treestands with the custom in-app map feature.

WEATHER - Check the temperature, wind direction, sunrise, and sunset directly within your app.

BUCK PROFILES -_Archive and tag your target bucks.

AUTO FORMAT - Choose to have your SD cards automatically format when inserting.

* **Note:** The Map and Buck Profile features of the Lone Wolf – Undercover™ App are meant to be used exclusively in the App. If you decide to remove the app from your device all in-app data will be lost including media, maps and buck profiles. If you wish to delete your Undercover TM app, be sure to save

all of your media to your device before doing so.

4. Camera Settings

Camera Mode Settings (Default settings are noted in red)	
Settings	Programmable Options
Camera Mode	<p>Picture, Video, Time Lapse, PIC+VIDEO</p> <p>Picture: camera shoots photos based on configured Multi-shot & Image Size;</p> <p>Video: camera shoots videos based on configured Video Length/Size;</p> <p>Time Lapse: If you set the camera to time lapse mode it will take photos at the time lapse intervals set. All of the photos taken will automatically generate into a video. Both the photos and videos will be saved.</p> <p>“PIC+VIDEO”, camera shoots photo(s) first, then video upon same trigger event based on Video Length/Size and Multi-shot/ Image Size user configured;</p> <p>Default: Picture mode</p>
Picture Mode	
Picture Size	<p>5MP (2560*1920), 8MP (3264*2448), 12MP (4032*3024)</p> <p>Default:5MP</p>
Multi-Shot	<p>Programmable 1~5 photos per trigger</p> <p>Default: 1</p>
Video Mode	
Video Size	<p>FHL-1080P (1920*1080) HD-720P (1280*720) WVGA (848*480)</p> <p>Default: HD-720P</p>
Video Length	<p>5s-60s</p> <p>Default: 10s</p>
Time Lapse Mode	
Time Lapse	<p>If this setting is turned on the camera will take photos at the time interval you choose. All of the photos taken will</p>

	<p>automatically generate into a video. Both photos and videos will be saved.</p> <p>Configurable time lapse: 00:00:03~23:59:59</p> <p>Default: 00:03:00</p>
Playback Rate	<p>Choose how many frames per second you'd like your timelapse pictures to generate into videos. 10 FPS is recommended.</p> <p>Default: 10FPS</p>
Time Period 1	<p>Choose the time lapse start and end time you'd like your first recording period to take place. During this time the camera will take photos at every time interval you have set in "Time Lapse"</p> <p>Configurable time period: 00:00:00-23:59:59</p> <p>Default is set from 5am to 8am. If you'd like the camera to take time lapse photos all day long turn this setting to off.</p>
Time Period 2	<p>Choose the time lapse start and end time you'd like your second recording period to take place. During this time the camera will take photos at every time interval you have set in "Time Lapse"</p> <p>Default: OFF</p>

PIR settings	
Settings	Programmable Options
Sensitivity	<p>High, Middle, Low</p> <p>Higher sensitivity is</p> <ol style="list-style-type: none"> 1) More sensitive to movements by smaller subjects; 2) Has a longer detection distance; 3) Easier for sensor to detect difference between body heat and outdoor temperature; 4) Easier to trigger the camera to record. It is hard to tell the difference between the body heat of subjects and the environment, high is suggested.

	Default: High
Delay	<p>Sets a time between photos and videos upon motion. This option can avoid the camera from taking too many photos or videos.</p> <p>Example: Camera will wait 1 minute between photo/video recordings with motion if pre-set time interval is 00:01:00</p> <p>Configurable delay time: 00:00:03~23:59:59.</p> <p>Default: 30 seconds</p>
Motion+Timelapse	<p>If this setting is on, the camera will not only take a photo at the time interval you choose, it will also take a photo upon motion.</p> <p>Configurable time interval: 00:00:03~23:59:59.</p> <p>Default: OFF</p>
Working Timer 1	<p>Choose the first start time and end time you'd like your camera to function. When this is set the camera will only turn on during the time periods set. If you'd like your camera on at all times keep this setting OFF.</p> <p>Example: 5am to 8pm - The camera will only work between these times.</p> <p>Default: OFF</p>
Working Timer 2	<p>Choose the second start time and end time you'd like your camera to function. When this is set the camera will only turn on during the time periods set. If you'd like your camera on at all times keep this setting OFF.</p> <p>Example: 5am to 8pm - The camera will only work between these times.</p> <p>Default: OFF</p>

General Settings	
Camera Name	The default name is the camera's WIFI name. You can change this when initially connecting your camera or in the camera settings section.

Auto Sync	<p>App will automatically set the time, date and year based on your phone settings.</p> <p>*Note: It is recommended to click Auto Sync after daylight savings to ensure you have the appropriate time marked on your photos and videos.</p>
White Balance	<p>Auto Day light Cloudy Incandescent Fluorescent</p> <p>Default: Auto</p>
Digital Zoom	<p>1X, 2X, 3X, 4X</p> <p>Note: No image stamp will appear on photos if set on 2X, 3X & 4X zoom.</p> <p>Default: 1X</p>
LED Flash	<p>High, Middle, Low</p> <p>Choose the intensity of the LED light when the flash is triggered. High is the brightest which is recommended for better night vision"</p> <p>Default: High</p>
Image Stamp	<p>Choose if you'd like the date, time and/or camera name to be stamped on your photos and videos.</p>
Battery Type	<p>Alkaline / Lithium, NI-MH</p> <p>Choose the type of batteries you are using. When the correct battery type is selected the camera optimally performs.</p> <p>Default: Alkaline/Lithium</p>
SD Cycle	<p>When this is set to ON, if the SD card is full the camera will continue to record photos and videos by deleting the earliest photo/video on your SD card.</p> <p>WARNING: When SD card cycle is off, the camera will not turn on when the SD card is full.</p> <p>Default: ON</p>
FW Version	<p>Shows the camera firmware version.</p>
Auto Format	<p>When this is set to ON, the camera will automatically format your SD card upon insertion. If this is set to ON,</p>

	<p>all data on your SD card will be deleted and the card will be formatted. If the same card is removed & put back in by accident, that card will not autoformat.</p> <p>Default: ON</p>
Reformat of SD Card	<p>This reformats your SD card manually. When clicked all data on your SD card will be deleted.</p>
Change WIFI Password	<p>You can change your WIFI password with this setting. Kindly noted the new password should be no less than 8 characters.</p> <p>Note: After you change your WIFI password, the camera will restart. Once the camera restarts you will have to reconnect to the cameras WIFI with the new password and reconnect the camera to the App.</p> <p>Default password: abc.1234</p>

5. Specifications

Image Sensor	5 Mega Pixels Color CMOS
Picture	<p>5MP/8MP/12MP =</p> <p>2560x1920/3264x2448/4032x3024</p> <p>Format: JPEG</p>
Video	<p>FHD 1080P@30FPS;</p> <p>HD 720P@30FPS;</p> <p>WVGA;</p> <p>File Format: .mp4, 16:9 Format</p>
Video Length	<p>Day - 5, 10, 15, 20, 25, 30, 45, 60 seconds</p> <p>Night - 5, 10, 30 seconds</p>
On-Camera User Interface	<p>On/Off - Single push button</p> <p>ON/OFF - Bi-Colored LED lights</p> <p>Battery Indicator – 4 LEDs lights</p> <p>Mode Select – Single push button</p> <p>Mode Indicator – 3 LEDs lights</p> <p>Modes - Pic, Video and Timelapse</p>
Lens	FOV=100°(Diagonal); Auto IR-Cut-Remove (at night)
PIR	<p>PIR Type: Motion Detector</p> <p>Detection Range: 20M (65ft) :</p> <p>Detection Angle: 80 degrees</p>

IR Range	20m (65ft)
IR LED	32pcs, 850nm IR LED
Memory	SD Card (4GB – 32GB)
SD Card Cycle	ON/OFF
Time Lapse	Yes
Ambient Sensor	Light, Temperature
Shooting Numbers	1-5, 1 pic per 1 second
Wireless	Wi-Fi AP, 2.4 GHz
Trigger Time	0.3-0.4S
Recovery Time	1.5-3S
Microphone	Waterproof microphone with small pin hole pointed at ground
USB 2.0	On the bottom of the camera
Operation Power	Battery: 12V; DC: 12V
Battery Type	8 AA Alkaline/ NI-MH/ Lithium
Operating Temperature	-13°F to 140°F
Storage Temperature	-22°F to 158°F
Operation Humidity	5%-90%
Waterproof Spec	IP54
Certification	CE-RED FCC-ID RoHS

* Specifications are subject to change without prior notice.

6. Power Supply

The Lone Wolf Undercover Trail Camera has a 9-12V power supply to ensure the optimal performance of all functions.

A. Batteries

The camera runs on eight AA size batteries. You can use alkaline/lithium or high-quality NiMH rechargeable batteries. It is recommended to use lithium energizer ultimate batteries as they perform better when running low and in cold temperatures. Also, be sure to choose the battery type you are using in the camera setting option called "Battery Type" for optimal operation time.

Batteries should be inserted with correct electrode position as marked in battery case. Upside down batteries electrodes may cause device malfunction. Also, we strongly recommend changing the batteries when

battery indicator light only have one illuminate and blinks or photo stamp is empty.

Note: DO NOT MIX BATTERY TYPES!! Different batteries used in the camera at the same time can cause permanent damage which will violate the warranty. Also do not mix new & partial used batteries.

B. Solar Panel

To bring users better using experience, our engineers designed this camera to be able to work with most standard 12V/2A lithium battery build-in solar panels. Solar panel can't charge the batteries in using in camera batteries cases.

C. Power Adaptor—Security Surveillance Purpose

This camera can also be powered by an external 12V/ 2A DC adapter. Electrical power is recommended for security purposes.

7. SD Card Selection

An SD card is required to operate the camera. When the camera is set to ON and no memory card is inserted, the ON/OFF LED light will quick blink orange.

Before inserting or removing an SD card, the camera must be turned OFF. Failing to do so may cause loss and/or damage of photos and videos already recorded on the memory card.

When the SD card is full, camera will be turned off automatically The following data shows an approximate quantity of the photos and videos which can be recorded by the camera depending on memory card capacity. 32g is the highest capacity of this SD card slot. You can also set SD cycle on, so when SD card is full camera can continuously take pictures and videos by deleting the earliest pictures and videos taken.

SD Size Capacity	4 GB	8 GB	16 GB	32 GB
Photo (pictures)				
5MP	3350	6935	13210	27920
8 MP	2048	4205	8070	17061
12 MP	1310	2701	5190	10965
Video (hours)				
848x480	03:23:37	06:51:24	13:54:18	28:07:33

HD	02:50:42	05:52:35	11:38:43	24:09:16
FHD	01:58:31	04:27:27	08:30:21	18:04:52

7.1 Attention

1. Insert the SD memory card correctly, camera does not support SD card hot swap (insertion).
2. Please use high-quality AA batteries in order to prevent battery cells from corrosion of leaked acid.
3. Use right adaptor (12V/2A) of this camera to supply power, and do not invert the electrode when put in batteries.
4. When the camera is turned on initially, it will automatically enter into arm mode in two minutes if you do not connect the camera's WIFI to your smartphone.
5. Don't interrupt power supply during firmware upgrade.
6. Do not frequently insert or pull out SD card and battery or plug in and out the adaptor when the camera is on.
7. Do not have any floating objects, such as leaves, strings, or ribbons in the 3M motion detection zone of cameras, to avoid mistaking photograph or videos.
8. Do not keep camera next to hot irrelevant objects, air conditioner exhaust vents, and light, etc. to avoid mistaking photos or videos.
9. Camera is with a 100° FOV lens and 32pcs IR LEDs. To ensure these IR LEDs can give enough flash that high quality AA batteries must be applied accordingly to deliver enough amperage to power the illuminator consistently in dark environments.
10. Programmed Date/Time can be saved in camera for 12 hours as long as camera was powered 1 hour above.

8. Troubleshooting

The camera won't turn on	<ul style="list-style-type: none"> • Verify if there are batteries in the camera. • Verify if the batteries are correctly installed. • Batteries run out, replace with new batteries.
---------------------------------	--

<p>The ON/OFF light is blinking yellow</p>	<ul style="list-style-type: none"> • Verify if memory card is already inserted • Verify if the memory card is insert correctly • Verify if the memory card is full
<p>WIFI disconnects Automatically</p>	<ul style="list-style-type: none"> • If there is no data transferred between the camera and the App within 2 minutes after you've connected the App with the camera's WIFI, it will disconnect automatically to preserve battery life. After disconnected, the ON/OFF LED light will blink in red for 5 seconds, all lights will turn off, then your camera will be armed in the mode you've set. • After APP connected with camera WIFI, and there are no data transfer between camera and APP for over 2 minutes, the WIFI will also automatically disconnect to preserve battery life. After disconnected, the ON/OFF LED light will blink in red for 5 seconds, all lights will turn off, then your camera will be armed in the mode you've set. • If you'd like to reactivate the camera's WIFI after it has been disconnected an the camera is armed, press the ON/OFF button once to reactivate the camera's WIFI. After pressed the ON/OFF LED light will illuminate and turn from yellow to green. This means your camera's WIFI is activated.
<p>Unable to connect with camera WIFI</p>	<ul style="list-style-type: none"> • Verify if the battery power is enough for WIFI connection. • Verify if camera WIFI has already connected by other device. If camera WIFI connected by other device, the ON/OFF light will blink in green. You can restart the camera and then connect.
<p>I forgot the WIFI password</p>	<ul style="list-style-type: none"> • After the camera is turned on, hold the mode button down for 10 seconds. The camera will then automatically reset and you will be able to reconnect the camera's WIFI with the default password.
<p>Cannot use APP to view Map or share pictures when connected with camera WIFI</p>	<ul style="list-style-type: none"> • For Android phones, when connected with camera WIFI, cellular data service will be unavailable. So for viewing Map or sharing pictures on Android APP, please disconnect camera WIFI and turn on cellular data to locate your camera and sharing pictures.

	<ul style="list-style-type: none"> • For IOS phones, cellular data service is available when connected with camera WIFI, so for viewing Map or sharing pictures, you can just turn on cellular data.
The camera is not responding	<ul style="list-style-type: none"> • Remove the batteries and reinstall them. • Replace batteries
The camera is not taking photos or videos	<ul style="list-style-type: none"> • Verify if there are batteries in the camera. • Replace batteries to make sure battery power is enough for camera to work. • Verify if the camera is turned on. • Please make sure that the SD card is not full. If the card is full, camera will stop taking images. You can turn on SD Card Cycle to avoid such problem.
The camera is taking black photos and/or videos	<ul style="list-style-type: none"> • Verify that there's something within the flash range to reflect the infrared back to the camera. • If you're not sure if the flash is working properly, test the camera in a dark. to see if you're able to have a black & white pictures or videos.
Dark Nighttime Photo/Videos	<ul style="list-style-type: none"> • Make sure the LED flash is set on High. • Pictures taken with a short delay between them (ex Delay:Instant or Multi-shot) may appear darker than others due to the quick response and rapid retriggering of the camera, allowing less time for the flash to fully recharge before firing again.
False Triggers / Nothing in Images	<ul style="list-style-type: none"> • Sunrise or sunset can trigger the sensor. Camera must be re-orientated. • At night, the motion detector may detect beyond the range of the IR illumination. Reduce sensibility setting. • Small animals may trigger the unit. Reduce sensibility setting and/or raise height of camera. • Motion detector may detect animals through foliage. • If a person or animal moves quickly, it may move out of the camera's field of view before the photo is taken. Move the camera further back or redirect the camera. • Make sure the mounting post or tree is stable and does not move.
Battery indicator light only has one light and is blinking	<p>Recharge the batteries or insert new ones. Always verify the battery level before using the camera.</p>

9. Warranty

The Lone Wolf Undercover™ Trail Camera and trail camera accessories are guaranteed against manufacturing defects for two (2) years from the original date of purchase. If a defect exists, at Lone Wolf Custom Gear's sole discretion(LWCG), will either repair the product at no charge using new and/or refurbished parts or exchange the product with a functionally equivalent product that is new or refurbished.

Except for such repair or replacement, the sale, processing or other handling of this product is without warranty, condition or other liability even though the defect or loss is caused by negligence or other fault. Damage resulting from abuse, use, accident, modifications or normal wear and tear is not covered by this or any warranty. LWCG assumes no liability for any accident, injury, death, loss, or other claim related to or resulting from the use of this product. In no event shall LWCG be liable for incidental or consequential damages relating to or resulting from the use of this product or any of its parts.

Returns or replacements of parts and/or products may be subject to shipping, handling, replacement and/or restocking fees. Please visit our website for additional detailed information about our Warranty:

www.lonewolfcustomgear.com

FCC REGULATIONS

 FCC Part 15

This equipment has been tested and found to comply with the limits for a Class B digital device, pursuant to Part 15 of the Federal Communications Commission (FCC) rules. These limits are designed to provide reasonable protection against harmful interference in a residential installation. This equipment generates, uses and can radiate radio frequency energy and, if not installed and used in accordance with the instructions, may cause harmful interference to radio communications. However, there is no guarantee that interference will not occur in a particular installation. If this equipment does cause harmful interference to radio or television reception, which can be determined by turning the equipment off and on, the user is encouraged to try to correct the interference by one or more of the following measures:

- Reorient or relocate the receiving antenna.

- Increase the separation between the equipment and receiver.
- Connect the equipment into an outlet on a circuit different from that to which the receiver is connected
- Consult the dealer or an experienced radio/TV technician for help. changes or modifications to this equipment not expressly approved by the party responsible for compliance could void the user's authority to operate the equipment. This device complies with Part 15 of the FCC rules. Operation is subject to the following two conditions: (1) this device may not cause harmful interference, and (2) this device must accept any interference received, including interference that may cause undesired operation.

LONE**WOLF**[®]
UNDERCOVER[™]

info@lonewolfcustomgear.com
www.lonewolfcustomgear.com