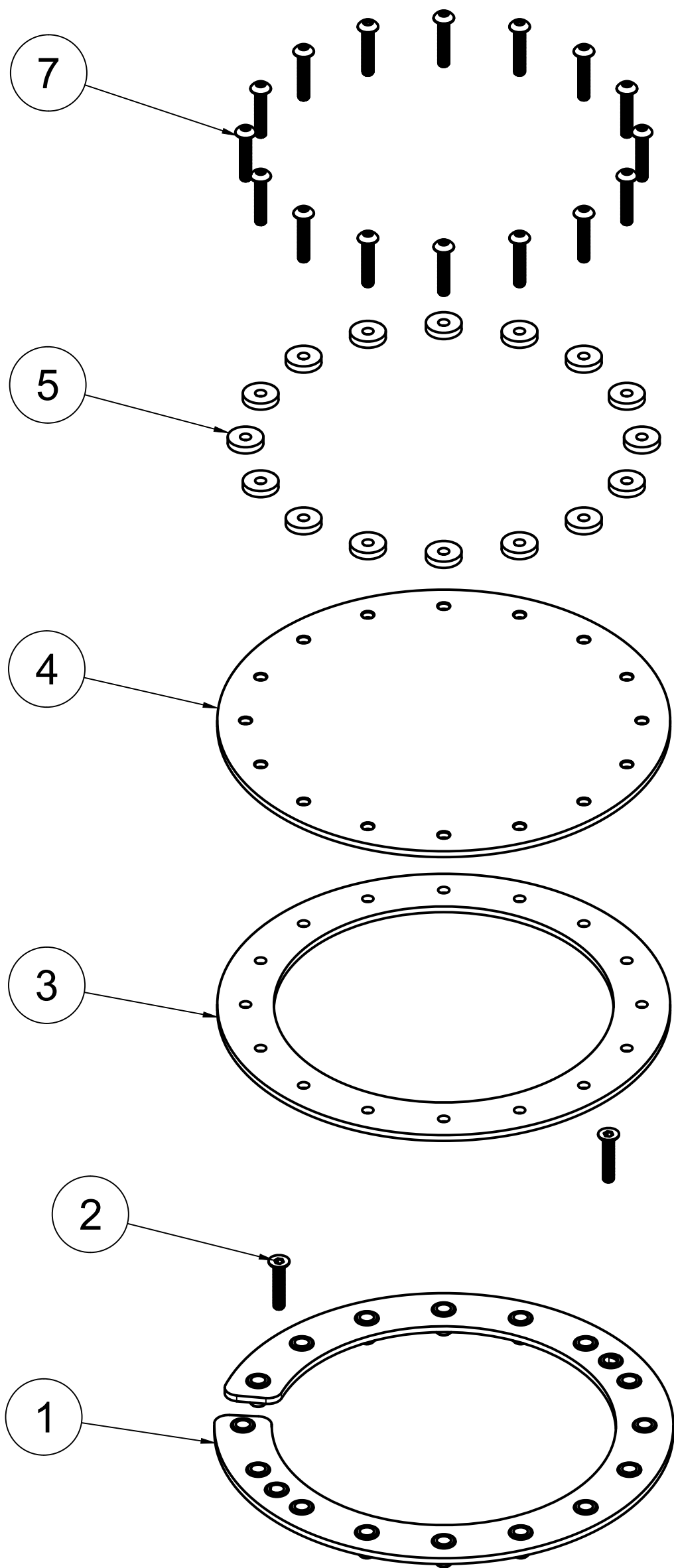


4

3

2

1



TOOLS NEEDED

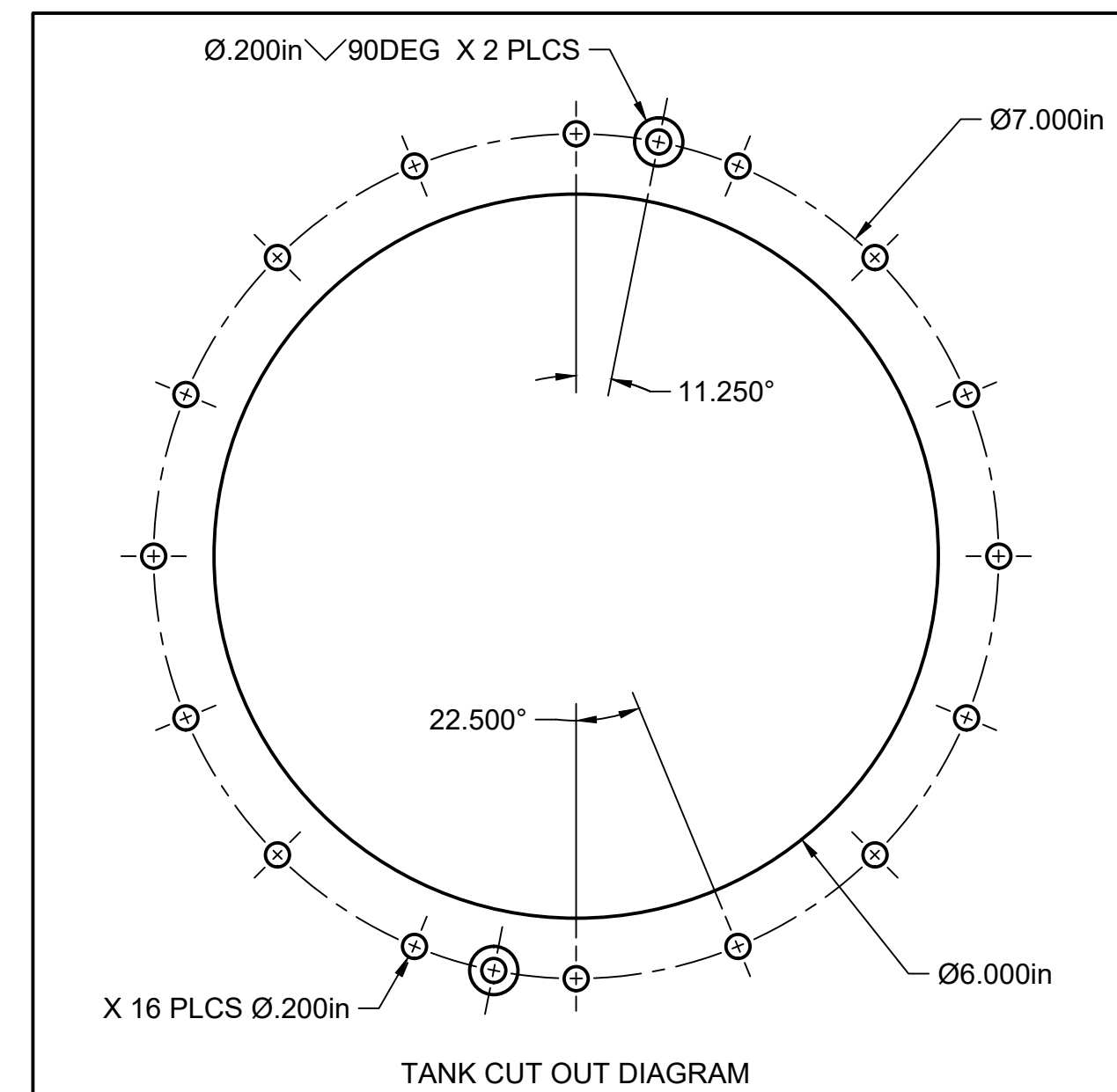
1. .201 DRILL BIT AND DRILL
2. 90 DEG CHAMFER BIT
3. 6" HOLE SAW
4. 1/8" ALLEN TOOL

BASIC INSTALL PROCEDURE

1. CUT HOLE IN TANK AND DRILL MAIN BOLT CIRCLE WITH ADDITIONAL UNDER-RING MOUNTING HOLES USING TANK CUT OUT DIAGRAM AS REFERENCE
2. INSERT UNDER-RING INTO TANK AND SECURE WITH 2X 10-32 FLAT HEAD SCREWS. TORQUE TO MAX 19-25 IN/LBS
3. INSTALL GASKET
4. INSTALL COVER PLATE
5. INSTALL X16 NYLON SPACERS
6. INSTALL X16 10-32 BUTTON HEAD SCREWS. TORQUE TO MAX 19-25 IN/LBS

NOTES:

- ENSURE COUNTER SINK HOLES ALLOW SCREWS TO SIT FLUSH TO TOP
- DEBURR ALL HOLES
- CLEAN INSIDE OF TANK OF ANY DEBRIS



PARTS LIST

ITEM	QTY	PART NUMBER	PART NAME	DESCRIPTION
1	1	44035-300	44035-UNDER RING ASSEMBLY V13	.125 5052 AL
2	2	SS10-32 FHCS	SS10-32 FLAT HEAD CAP SCREW V13	1" LONG
3	1	46012	BW 16 BOLT GASKET V10	BW FKM VITON GASKET
5	16	NYLON SPACER	NYLON SPACER V4	NYLON SPACER
6	1	44035-100	44035-COVER PLATE V5	.125 5052 AL
7	16	10-32 BHS-1	10-32 BUTTON HEX SCREW - 1IN V3	1" 10-32 SS BUTTON HEX SCREW



PROJECT

BOYD WELDING

TITLE

**44035
8" OD X 6" ID BOLT IN CLEAN OUT
INSTRUCTION SHEET**

APPROVED

CHECKED

DRAWN Dustin Loveland 6/29/2021

SIZE

C

BW INT. REV.

000

DWG NO

WEIGHT

CUSTOMER REV

X

SCALE 1:4

SHEET 1/1

4

3

2

1

A

A