

4

3

2

1

TOOLS NEEDED

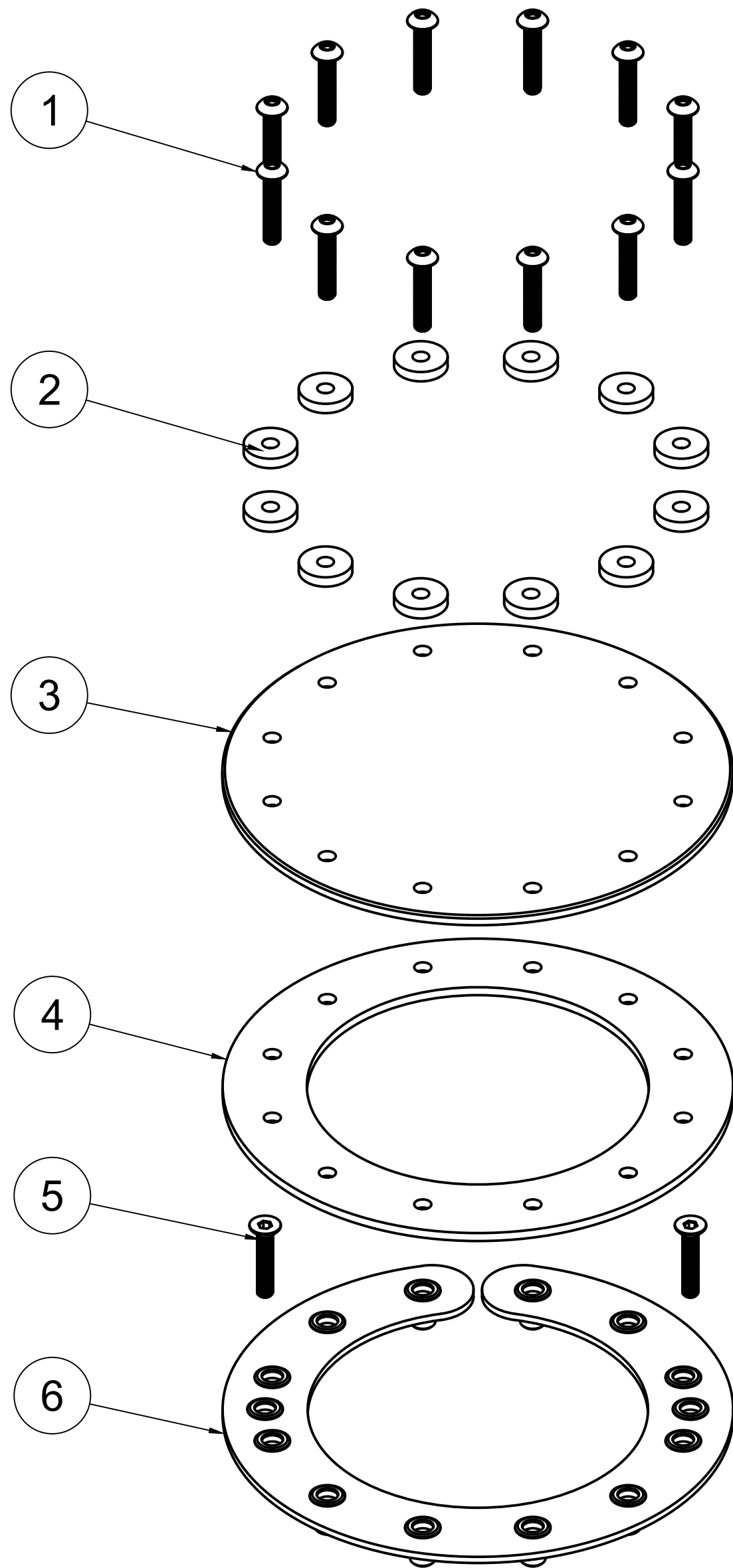
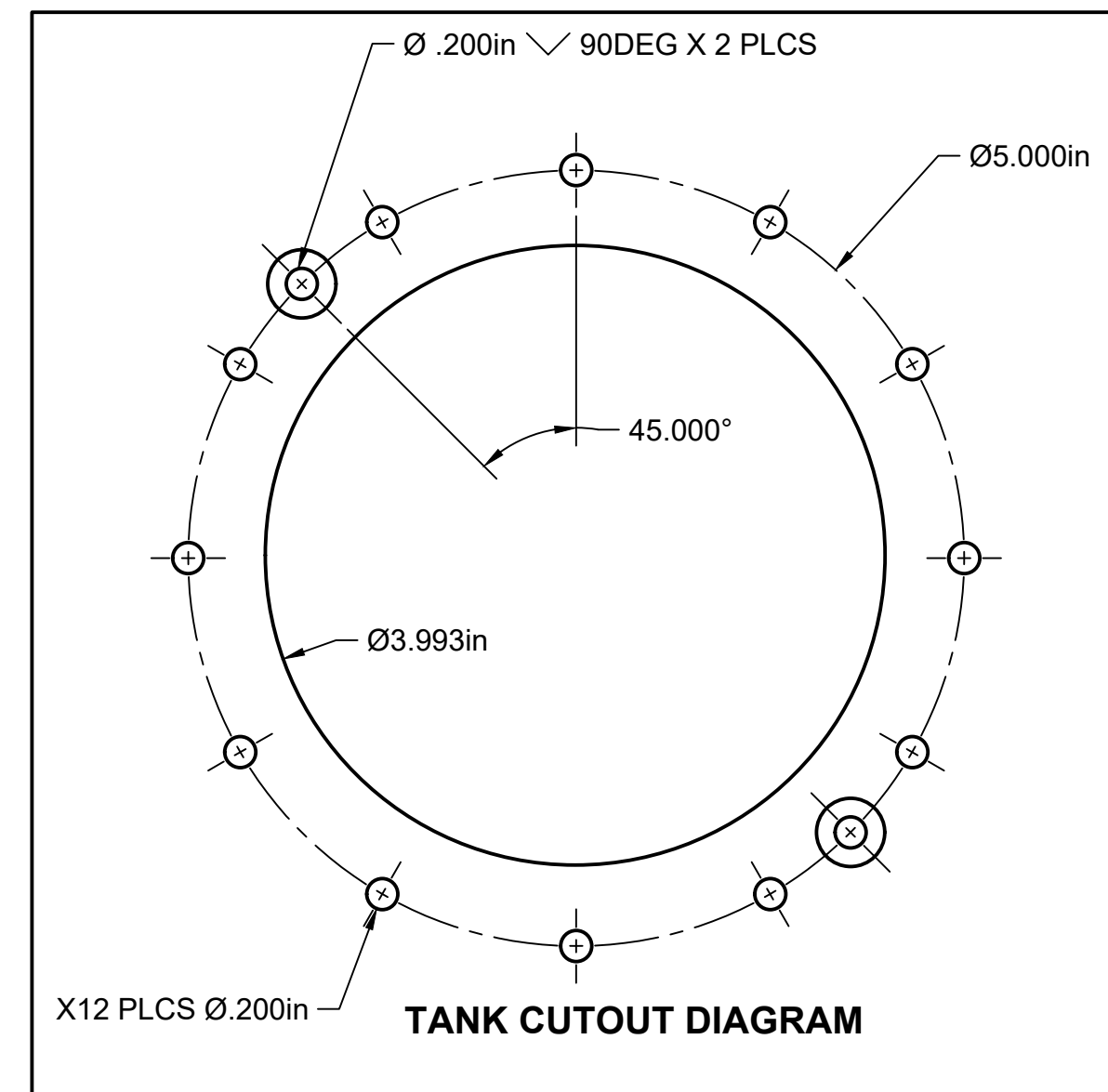
1. .201 DRILL BIT AND DRILL
2. 90 DEG CHAMFER BIT
3. 4" HOLE SAW
4. $\frac{1}{8}$ " ALLEN TOOL

BASIC INSTALL PROCEDURE

1. CUT HOLE IN TANK AND DRILL MAIN BOLT CIRCLE WITH ADDITIONAL UNDER RING MOUNTING HOLES USING TANK CUT OUT DIAGRAM AS REFERENCE
2. INSERT UNER-RING INTO TANK AND SECURE WITH X2 10-32 FLUSH HEAD SCREW. TORQUE TO MAX 19-25 IN/LBS
3. INSTALL GASKET
4. INSTALL COVER PLATE
5. INSTALL X 12 NYLON SPACERS
6. INSTALL X 12 10-32 BUTTON HEAD SCREWS. TORQUE TO MAX 19-25 IN/LBS

NOTES:

1. ENSURE COUNTER SINK HOLES ALLOW THE SCREWS TO SIT FLUSH TO TOP
2. DEBURR ALL HOLES
3. CLEAN INSIDE OF TANK OF ANY DEBRIS



PARTS LIST

ITEM	QTY	PART NUMBER	PART NAME	DESCRIPTION
1	12	10-32 BHS-1	10-32 BUTTON HEX SCREW - 1IN V3	1" 10-32 SS BUTTON HEX SCREW
2	12	NYLON SPACER	NYLON SPACER V4	NYLON SPACER
3	1	41008	41008 V7	BW 12 BOLT UNDER RING ASSEM.
4	1	46004	BW 12 BOLT GASKET V13	FKM VITON GASKET
5	2	SS10-32 FHCS	SS10-32 FLAT HEAD CAP SCREW V13	1" LONG
6	1	41004	41004 V18	BW 12 BOLT COVER PLATE



PROJECT

BOYD WELDING

TITLE

**44033 INSTALLATION INSTRUCTIONS
6" OD X 4" OD BOLT IN TANK CLEANOUT
X**

APPROVED

CHECKED

DRAWN Dustin Loveland 6/29/2021

SIZE

C

BW INT. REV.

000

DWG NO

WEIGHT

CUSTOMER REV

X

SCALE 1:2

SHEET 1/1

4

3

2

1

A

A