



Vacmaster®

VQ1530SFDC/1500W / 30L



GB WET AND DRY VACUUM CLEANER
Operator's manual

02 - 13

(G1)

IPX4 CE 

TABLE OF CONTENTS

SECTION	PAGE
Warranty.....	2
Safety Instructions and Warnings.....	3
Specifications.....	5
Unpacking and Checking Carton Contents.....	6
General Assembly Instructions.....	7
Switching ON/OFF.....	8
Dry Vacuum Operation.....	9
Liquid Vacuum Operation.....	10
Blowing Operation.....	11
Maintenance.....	11
Installing & Cleaning Cartridge.....	12
Installing & Cleaning Foam Filter.....	12
Troubleshooting.....	13

Thank you for purchasing this Vacmaster® wet and dry vacuum cleaner. With Vacmaster® you are obtaining a high quality product that is engineered for optimal performance. This vacuum cleaner is capable of picking up liquids and dry materials.

FOR YOUR SAFETY: CAREFULLY READ AND UNDERSTAND ALL INSTRUCTIONS.

WARRANTY

Vacmaster® takes pride in producing a high quality, durable product. This Vacmaster® product carries a limited two (2) year warranty against defects in workmanship and materials from date of purchase under normal household use. Warranty does not apply to defects due to direct or indirect abuse, negligence, misuse, accidents, repairs or alterations and lack of maintenance. Please keep you receipt as proof of purchase.

SAFETY INSTRUCTIONS & WARNINGS

IMPORTANT SAFETY INSTRUCTIONS



Read and understand all instructions before using this vacuum cleaner.

Read and understand this operator's manual and all labels on the wet and dry vacuum cleaner before operating. Safety is a combination of common sense, staying alert, and knowing how your vacuum cleaner works. Use this wet and dry vacuum cleaner as described in this manual. To reduce the risk of personal injury or damage to your wet and dry vacuum cleaner, use only Vacmaster® recommended accessories.

SAVE THIS MANUAL FOR FUTURE REFERENCE.

When using an electrical appliance, basic precautions should always be followed including the following:

WARNING: TO REDUCE THE RISK OF FIRE, ELECTRIC SHOCK OR INJURY:

- This appliance complies with the compulsory safety regulations for electric equipment. However, improper use can be harmful to people and property. Please read these operating instructions through carefully and completely before switching the appliance on. Keep the operating instructions, the receipt, as well as the packaging and packaging material if at all possible.
- Don't use the appliance outdoors. Don't subject the appliance to heat, direct sunshine or very high moisture (e.g. rain). Never immerse.
- The appliance in liquids and be aware of sharp edges that may damage it.
- The appliance is designed to vacuum up materials that are not hazardous to your health and that are not flammable.
- Never hold the connectors in front of your face (especially your eyes, ears, etc.) Never direct the nozzle towards persons or animals.
- Only use the appliance for its designated purpose. Any other types of use are at your own risk and are possibly dangerous.
- Other uses and unattended operation are not allowed.
- The manufacturer cannot be held responsible for damages that are caused by improper use or incorrect operation.
- Connect the appliance only to a 220-240 volt alternating current socket. The socket should be protected by a 16-amp fuse.
- Make sure that the correct dust bag has been inserted securely in its holder before using the appliance. The wrong filter or dust bag or incorrectly installed filter or dust bag can cause damage to the appliance and cause the guarantee to become void.
- If the supply cord is damaged, it must be replaced by the manufacturer, a qualified service agent or similarly qualified persons in order to avoid a hazard.
- Do not suck up ashes, hot coals or the like, large fragments of glass and sharp objects.
- If you would like to vacuum up cold ashes, then you can do this with our ash tank.
- Don't vacuum up any toner dust, which is used in printers and copiers for example, because it is electrically conductive. In addition, it is possible that it will not be completely filtered out by the filter system of the wet and dry vacuum cleaner and can be released into the air via the exhaust fan.
- Never vacuum asbestos or asbestos dust.
- Never vacuum flammable or poisonous liquids like petrol, oil, acids, or other volatile substances.
- Don't vacuum up liquids that are hotter than 60 °C or any poisonous or flammable dusts.
- Never lay the appliance on its side. Pay particular attention to a horizontal position and adequate stability on stairs.
- Always unplug the appliance after use and before cleaning or changing the filters or accessories.
- Only trained specialists may make repairs on electric equipment. Improper repairs could result in considerable danger to the user.

- Do not store the appliance directly beside a hot oven or radiator.
 - Use insulating gloves, an earth connector connected to the steel container, or any other protective equipment when using the vacuum cleaner in some special places such as carpet or insulated floor.
 - Do not store the vacuum cleaner in insulated places after using for carpet cleaning or insulated grounds cleaning. Store the vacuum cleaner in a well earthed environment.
 - This appliance should not be used by persons under the age of 16 or by persons with reduced physical, sensory or mental capabilities, or lack of experience and knowledge, as well as any other persons such as persons with heart disease unless they have been given supervision or instruction concerning use of the appliance by a person responsible for their safety.
 - Children should be supervised to ensure that they do not play with the appliance.
 - When cleaning or removing the appliance, always switch it off. The plug must be removed from the socket-outlet before cleaning or maintaining the appliance. Remove the plug from the socket, if you are not going to use the appliance for an extended period of time. Never pull on the cable to unplug the appliance, rather pull on the plug itself. Also, remove any special accessories from the appliance.
 - Always keep the appliance clean. Don't use any solvents or cleaners that contain solvents for cleaning.
 - Never leave the appliance switched on unattended. If you leave the work area, switch the appliance off or unplug it from the power socket (don't pull the cord, but use the plug).
 - In order to protect children from electric household appliances, make sure that the cable can't cause children to stumble and don't give children access to the appliance.
 - Never use the appliance when you are under the influence of medication, alcohol or drugs, if you are currently under medical care, or if you are tired.
 - Check the appliance and the power cord regularly for any possible damage. Don't use damaged appliances.
 - Don't try to repair the appliance yourself. Always use a qualified technician for repairs. Always have faulty power cords replaced immediately by the manufacturer or a qualified electrician. Use the same type of cable in order to prevent any danger of electric shock and injury.
 - Only use original spare parts and accessories.
 - Frequently check that the float valve positioned underneath the motor is able to move freely.
 - If you notice liquid leaking from your appliance, switch it off immediately and unplug it.
 - Don't put the appliance in water. Make sure that water is not spilled on the appliance.
 - When disposing of the wastewater, make sure that you observe any legal regulations.
 - Only store the appliance in a safe and dry location outside the reach of children.
 - Please also pay particular attention to the following "Special Safety Information".
- Special Safety Information:
- Never vacuum up hot ashes or pointed or sharp objects.
 - Never use the vacuum cleaner without some sort of filtration either a dry filter for dry vacuuming or a foam filter for wet vacuuming.
 - When using the appliance, make sure that no hair or loose clothing can be drawn in.
 - Keep the vacuum cleaner away from heat sources such as radiant heaters, ovens, and so on.
 - Do not run wet and dry vacuum cleaner unattended.

Disposal Information:

The appliance contains electric and electronic components and may not be disposed of as household garbage. The local and currently applicable legislation must be observed unconditionally.

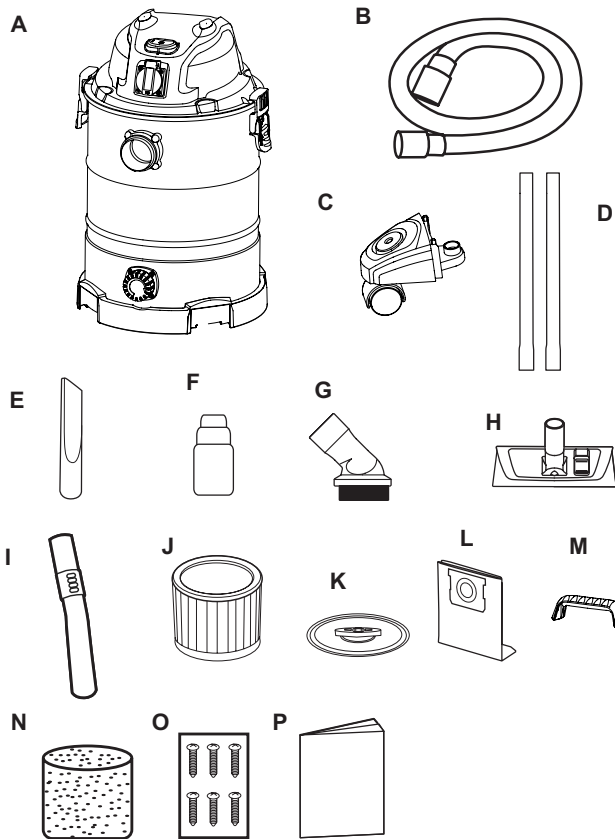
When using as blower:

- Direct air discharge only at work area.
- Do not use wet and dry vacuum cleaner as a sprayer.
- Do not direct air at bystanders.
- Keep children away when blowing.
- Wear safety goggles.

SPECIFICATIONS

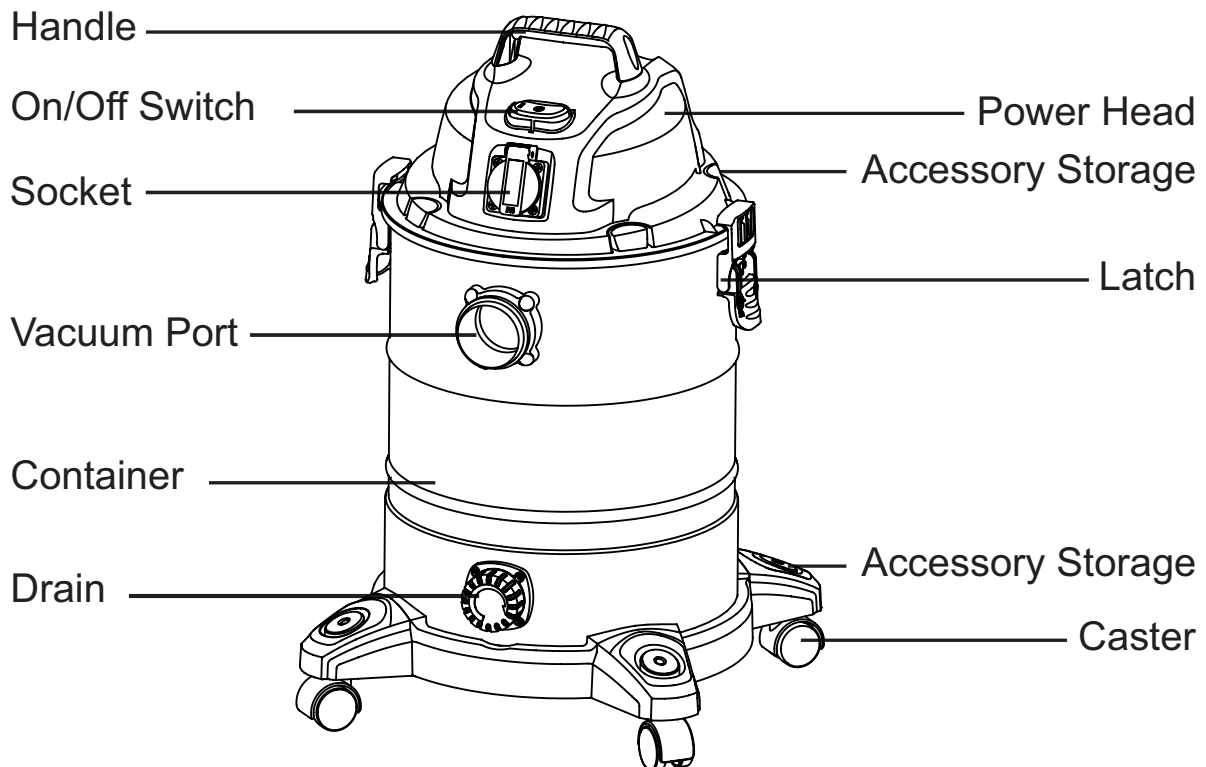
Motor:	220-240V~50Hz
Power input:	1500 watts
Max. power consumption of the automatic socket outlet:	1400 watts
Container:	30ltr
Filter - Dry:	Cartridge filter, Dust bag
Filter - Wet:	Foam filter

UNPACKING AND CHECKING CARTON CONTENTS

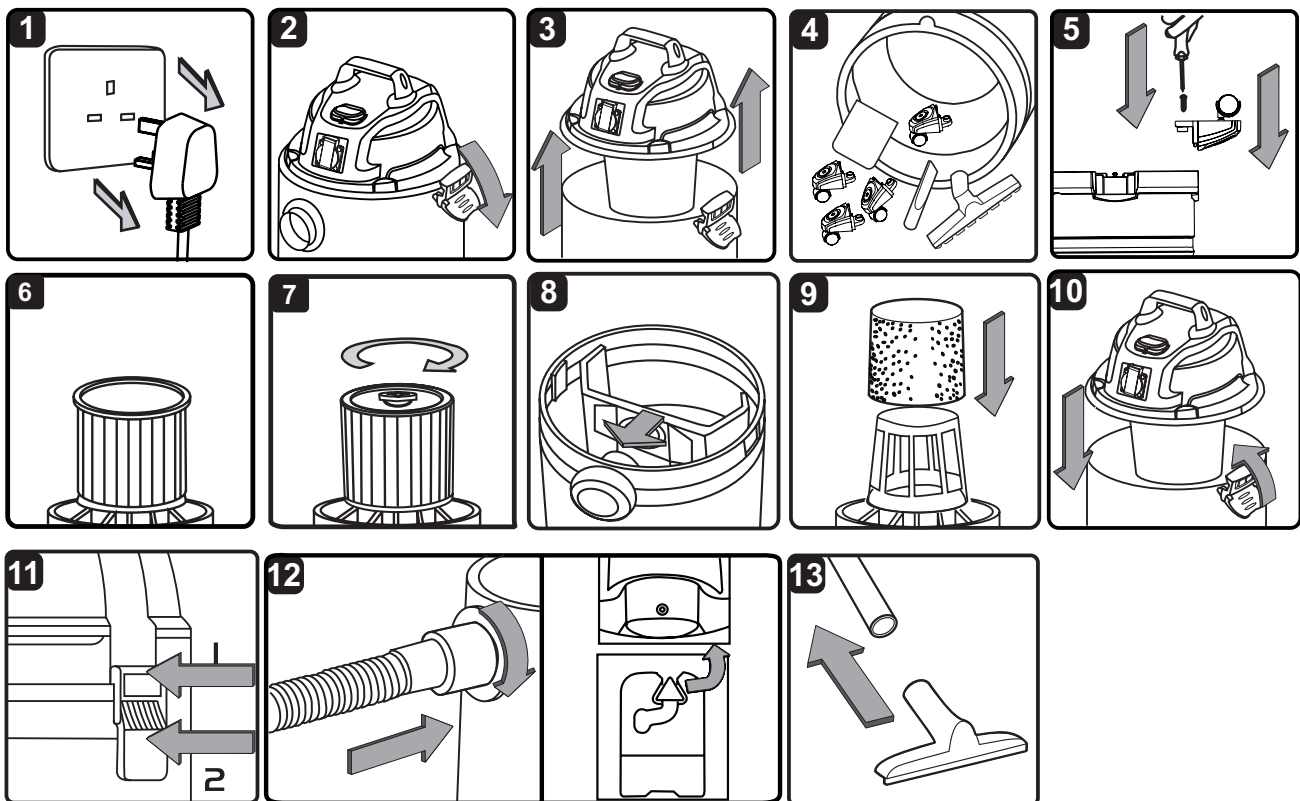


1. Overview of the Appliance Components

A	Vacuum Cleaner.....	1
B	Hose.....	1
C	Caster	4
D	Extension wands.....	2
E	Crevice tool.....	1
F	Hose adaptor for power tools.....	1
G	Round dust brush.....	1
H	Floor nozzle.....	1
I	Handle with air flow regulation.....	1
J	Cartridge filter.....	1
K	Filter retainer.....	1
L	Dust bag.....	1
M	Handle.....	1
N	Foam sleeve filter.....	1
O	6 Screws (Bag).....	1
P	Operator's Manual.....	1



GENERAL ASSEMBLY INSTRUCTIONS

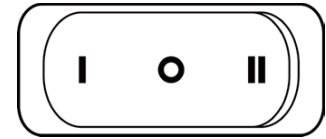


- 3.1. Verify that the power cord is disconnected from the power socket. (As show in fig.1)
- 3.2. Undo the latches. (fig.2)
- 3.3. Lift the power head off the container. (fig.3)
- 3.4. Remove the contents from inside the container; make sure you have all contents as listed. (fig.4)
- 3.5. With the power head removed, turn the container upside down. Insert the feet with casters into the slots and apply pressure into place and secure them with supplied screw. Do not over- tighten screws. (fig.5)
- 3.6. Your vacuum cleaner comes ready for dry vacuum cleaning with cartridge filter pre-installed. If cartridge filter is not installed, refer to page 12 for filter installation. (fig.6 & 7)
- 3.7. Optional, for improved dust bag, fit dust bag flange onto the inlet stub, taking care not to damage the bag. (fig.8)
- 3.8. For wet vacuum cleaning, install the supplied foam filter instead of the cartridge filter. Do not use a dust bag when wet vacuuming. If foam filter is not installed, refer to page 12 for filter installation (fig.9)
- 3.9. Place the power head back on the container, and secure into place using the 2 side latches. (fig.10 & fig.11)
- 3.10. Insert the locking end of the hose into the port of the container and turn to lock in to place. (fig.12)
- 3.11. Choose the desired accessories and extension wands and push onto the suction tube.(fig.13)

SWITCHING ON/OFF

Connect the mains plug.

Switching on the vacuum cleaner:



Position I switches the vacuum cleaner on:



Position II switches the vacuum cleaner to stand by so that it switches on and off automatically with a power tool that is plugged into the on-board socket. Once the electrical appliance has been switched off, the vacuum cleaner switches off following a time lapse to allow the suction tube to be emptied.

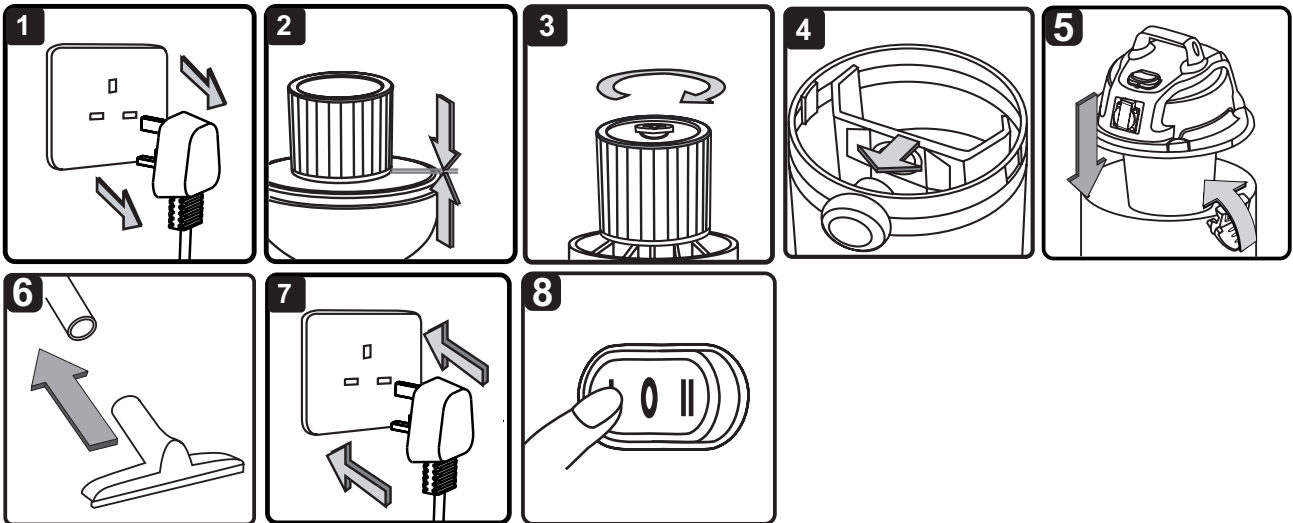
Switching off the vacuum cleaner:

Press



so that the switch is in the mid position.

DRY VACUUM OPERATION



WARNING! Ensure you read, understand and apply Section 1 ‘Safety Instructions’.
Reminder: DO NOT vacuum hazardous substances. Use of an incorrect dust bag will invalidate your warranty.

- 4.1. Verify that the power cord is disconnected from the power socket.(fig.1)
- 4.2. In order to prepare your vacuum cleaner for dry vacuuming, verify that the cartridge filter is securely mounted. With power head removed and in the upside down position, make sure the filter is pushed in until it stops against the power head and the retainer is installed. (fig.2 & 3)
(Your wet and dry vacuum cleaner comes with the cartridge filter pre-installed, if not, see page 12 for installation instructions.)
- 4.3. Optional, for improved dust filtering, fit dust bag flange onto the inlet stub, taking care not to damage the bag. (fig.4)
- 4.4. Place the power head back on the container, and secure it in place using the latches. (fig.5)
- 4.5. Insert the locking end of the hose into the vacuum port and screw in place. Push the required attachment onto the free end of the hose or extension. (fig.6)
- 4.6. Plug in the power cord in to the power socket.(fig.7)
- 4.7. Turn the motor on by dipping the switch to the “I” ON position.(fig.8)
- 4.8. Once you have completed vacuuming, flip the switch to the “O” OFF position and unplug the power cord from the power.

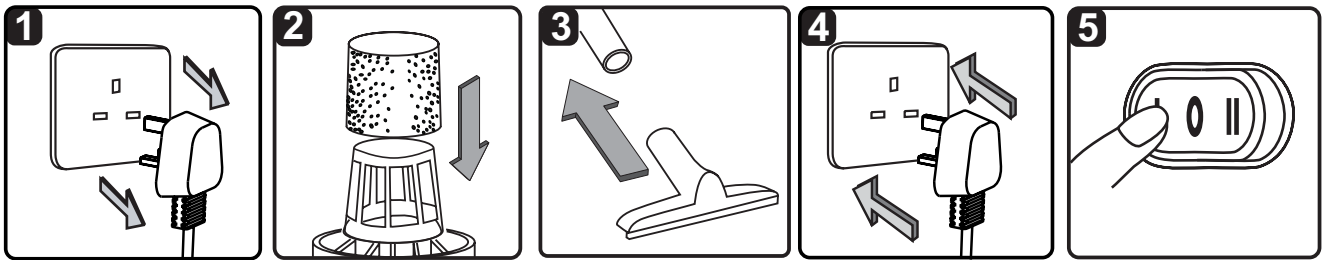
I = ON

II = ON/OFF with a power tool

Middle position = OFF

DO NOT USE THE CARTRIDGE FILTER FOR LIQUID VACUUMING.

LIQUID VACUUM OPERATION



WARNING: BE SURE TO READ, UNDERSTAND, AND APPLY INFORMATION, ENTITLED 'SAFETY INSTRUCTIONS & WARNINGS'. DO NOT VACUUM IN AREAS WITH FLAMMABLE GASES, VAPORS, OR EXPLOSIVE DUSTS IN THE AIR. FLAMMABLE GASES OR VAPORS INCLUDE BUT ARE NOT LIMITED TO; LIGHTER FLUID, SOLVENT TYPE CLEANERS, OIL-BASE PAINTS, GASOLINE, ALCOHOL OR AEROSOL SPRAYS. EXPLOSIVE DUSTS INCLUDE BUT ARE NOT LIMITED TO; COAL, MAGNESIUM, GRAIN OR GUN POWDER. TO REDUCE THE RISK OF HEALTH HAZARDS FROM VAPORS OR DUST, DO NOT VACUUM TOXIC MATERIALS. WARNING: DO NOT PLUG IN POWER CORD TO POWER SOCKET, MAKE SURE PLUG IS DISCONNECTED BEFORE ASSEMBLING THE WET AND DRY VACUUM CLEANER.

- 5.1. Verify that the power cord is disconnected from the power socket. Verify that the container is clean and free of dust and dirt. (fig. 1)
- 5.2. Remove cartridge filter, then carefully install the foam filter over the filter cage and place the power head back on the container. (fig. 2)

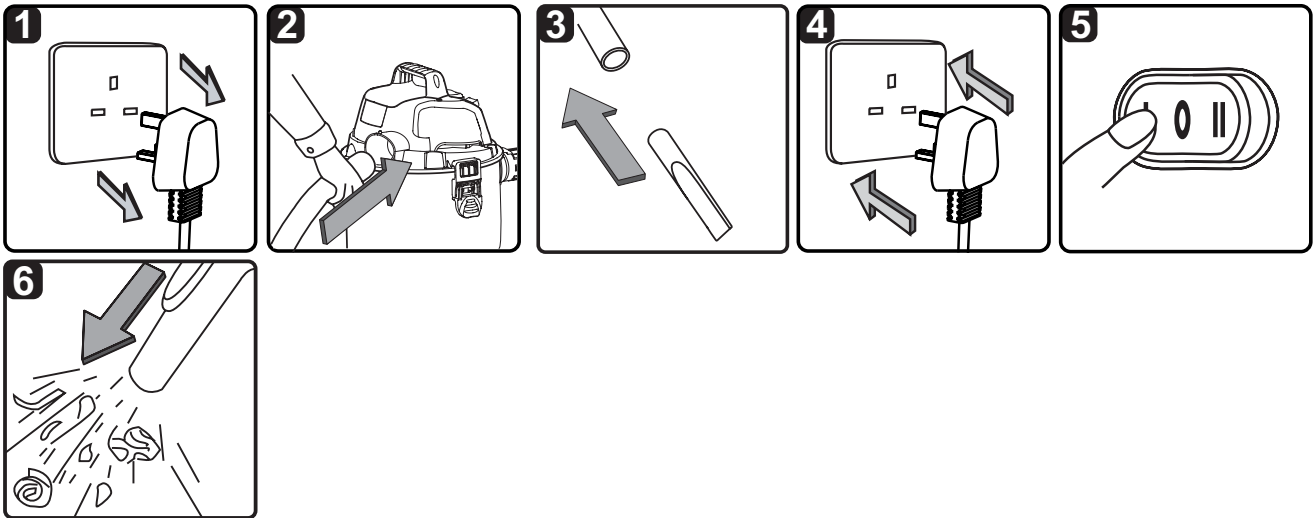
DO NOT USE THE CARTRIDGE FILTER FOR LIQUID VACUUMING. OPERATING INSTRUCTIONS – WET VACUUMING.

- 5.3. Fit the desired nozzle to the vacuum cleaner hose. (fig. 3)
- 5.4. Verify that the switch is in the 'O' OFF position before plugging the power cord into the power socket. (fig. 4)
- 5.5. Turn the motor on by flipping the switch to the 'I' ON position.(fig. 5)
- 5.6. After use, empty the tank and dry.

IMPORTANT! When vacuuming large quantities of liquids, do not immerse the nozzle completely in the liquid; leave a gap at the tip of the nozzle opening to allow air inflow. The machine is fitted with a float valve that stops the suction action when the container reaches its maximum capacity. You will notice an increase in motor noise. When this happens, turn off the machine, disconnect from power supply, and drain the liquid into a suitable receptacle or drain. To continue vacuuming, refill the container with the drain cap. After wet vacuuming, turn the machine off and remove plug from power supply. Empty the container, clean and dry the inside and outside before storage.

REMEMBER! The foam filter must be removed after wet vacuuming, and a cartridge filter must be installed before dry vacuuming again.

BLOWING OPERATION



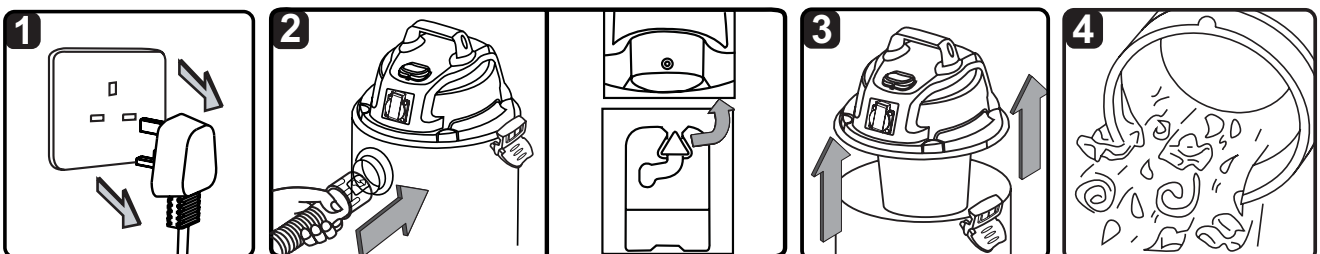
This wet and dry vacuum cleaner has blowing capabilities.
To use the blower feature follow the instructions listed.

WARNING: KEEP BY STANDERS CLEAR FROM BLOWING DEBRIS.

WARNING: WEAR A DUST MASK IF BLOWING CREATES DUST THAT MIGHT BE INHALED.

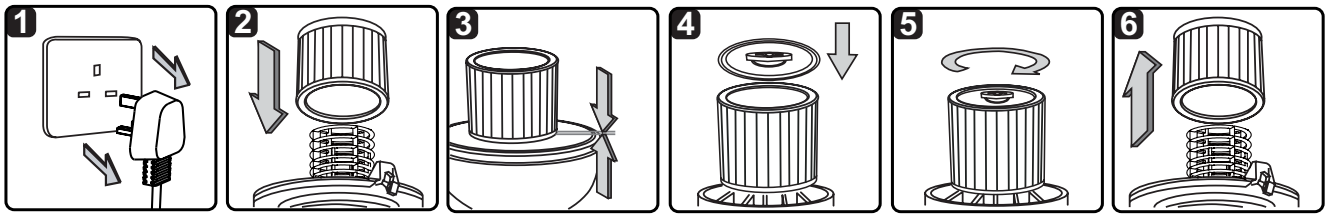
- 6.1. Verify that the power cord is disconnected from the power socket.(fig. 1)
- 6.2. Make sure the container is empty before using as a blower.
- 6.3. Remove hose from the vacuum port.
- 6.4. Insert the locking end of the hose into the blowing port on the back side of the power head and lock into position.(fig. 2)
- 6.5. Fit the desired extension wand or nozzle to the vacuum cleaner hose.(fig.3)
- 6.6. Ensure the power switch is turned off and plug in the power supply. (fig. 4)
- 6.7. Before turning on the wet and dry vacuum cleaner, firmly hold loose end of the hose. Turn the motor on by flipping the switch to the 'I' ON position.(fig. 5)

MAINTENANCE



- 7.1. Verify that the power cord is disconnected from the power socket. (fig.1)
- 7.2. Disconnect the hose from the vacuum cleaner, turning large end in counter clockwise direction. (fig.2)
- 7.3. Undo the latches and remove the power head from the container. (fig.3)
- 7.4. Clear all dirt or debris from the container and hose. (fig.4)
- 7.5. Check the hose, attachments, and power cord to verify that they have not been damaged.

INSTALLING & CLEANING CARTRIDGE



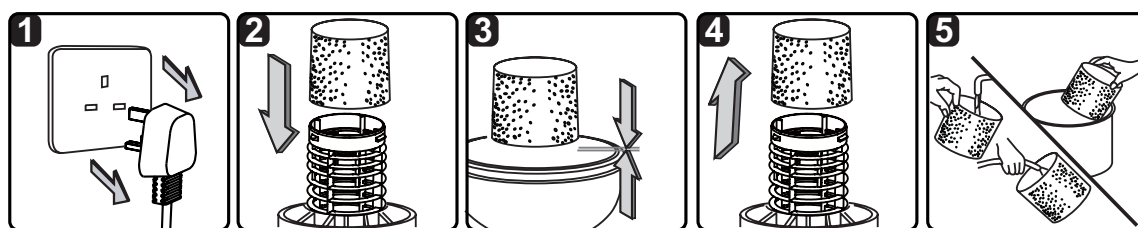
Installing Cartridge Filter

1. Verify that the power cord is disconnected from the power socket. (fig.1)
2. Remove power head and place in an upside down position.
3. Install the cartridge filter over the filter cage with the flat end of the filter towards the vacuum power head. Carefully push filter in until it stops against the power head. (fig.2 & 3)
4. Place filter retainer on top of cartridge filter over the raise lip and tighten down by turning retainer clockwise, do not over tighten. (fig. 4 & 5)

Removing and Cleaning Cartridge Filter

1. Unlock and remove the filter retainer by tuning retainer handle counter clockwise.
2. Carefully hold and pull the cartridge filter up for removal. (fig.6)
3. Clean the cartridge filter by gently tapping or brushing dirt off. Cleaning should not be done indoors in living areas. For optimal performance a new filter is recommended.
4. Install cleaned or new filter into place as instructed above in steps 2 and 3 of Installing Cartridge Filter.
5. Wet filters should be removed and allowed to air dry for 24 hours before installing onto the filter cage.

INSTALLING & CLEANING FOAM FILTER



Installing Foam Filter

- 9.1. Verify that the power cord is disconnected from the power socket.
- 9.2. Remove power head and place in an upside down position. Follow instructions to remove dust filter.
- 9.3. Carefully slide foam filter down over the filter cage making sure the whole cage is covered. (fig.1 & 2)
- 9.4. Replace the power head onto the container.

Cleaning Foam Filter

- 9.5. With the removed power head in the upside down position, carefully remove foam filter. (fig.3)
- 9.6. Use a mild soap and water solution to wash foam filter and rinse with clean water. (fig.4)
- 9.7. Allow filter to air dry before installing and using again.

TROUBLESHOOTING

WARNING: TO REDUCE THE RISK OF ELECTRIC SHOCK-UNPLUG BEFORE TROUBLESHOOTING.

The appliance doesn't work.	No power Functional fault in the power cord, switch, or motor Tank is full of liquid	Check the power supply. Have the damaged part checked by qualified personnel or replace it. Empty the tank
Dust is escaping from the motor cover	The dust bag is missing or damaged	Put in a dust bag or replace it.
Low suction power and high motor speed / vibrations	Dust bag is full Suction nozzle, hose, or tank inlet is plugged.	Replace the dust bag Check the suction nozzle, hose, and tank inlet for obstructions.

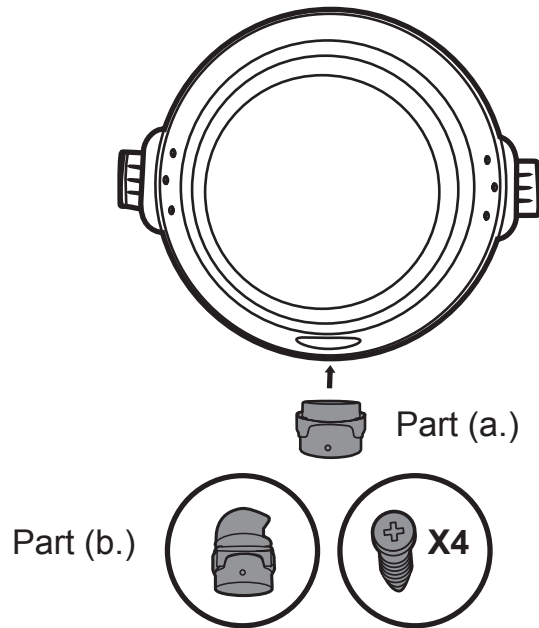
Correct Disposal of this product

This marking indicates that this product should not be disposed with other household wastes throughout the EU. To prevent possible harm to the environment or human health from uncontrolled waste disposal, recycle it responsibly to promote the sustainable reuse of material resources. To return your used device, please use the return and collection systems or contact the retailer where the product was purchased. They can take this product for environmental safe recycling.

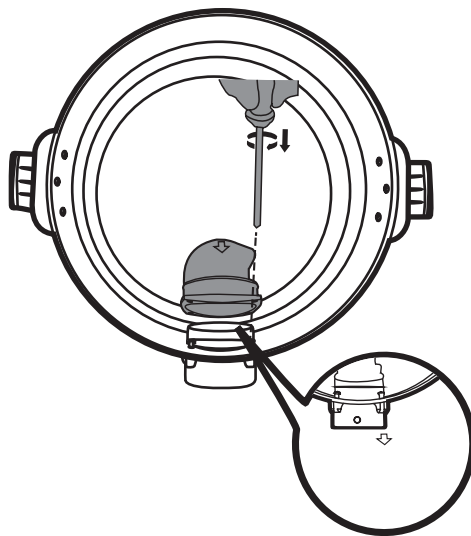


QUICK ASSEMBLY GUIDE

To pack the 2 products in 1, the port on the vacuum needs to be assembled by user.



1. Fit part (a.) into the port on the outside of the tank.
2. Fit the inlet stub part (b.) into the port from inside the tank.
3. Fix both parts securely into place using the 4 screws provided.





www.vacmaster.com

800.851.1111

in