

VQ1220PF / 1250W / 20L



GB WET/DRY VACUUM
Operator's manual

02 - 18

TABLE OF CONTENTS

SECTION	Page
Warranty.....	2
Safety Instructions and Warnings.....	3
Double Insulation Instructions.....	6
Specifications.....	7
Electrical Safety.....	8
Unpacking and Checking Carton Contents.....	9
General Assembly Instructions.....	10
Dry Vacuum Operation.....	11
Liquid Vacuum Operation.....	12
Blowing Operation.....	13
Maintenance.....	14
Installing & Cleaning Dust Filter.....	14
Installing & Cleaning Foam Sleeve Filter.....	15
Trouble shooting.....	16
Exploded view and parts list.....	17

Thank you for purchasing this Vacmaster® wet/dry vacuum cleaner. Feel confident that with Vacmaster® you are obtaining a high quality product engineered for optimal performance. This vacuum is capable of picking up liquids and dry materials.

FOR YOUR SAFETY: CAREFULLY READ AND UNDERSTAND ALL INSTRUCTIONS

WARRANTY

Vacmaster® takes pride in producing a high quality, durable product. This Vacmaster® product carries a limited two (2) year warranty against defects in workmanship and materials from date of purchase under normal household use. Warranty does not apply to defects due to direct or indirect abuse, negligence, misuse, accidents, repairs or alterations and lack of maintenance. Please keep your receipt as proof of purchase.

SAFETY INSTRUCTIONS & WANINGS

IMPORTANT SAFETY INSTRUCTIONS



Read and understand all instructions before using this vacuum

Read and understand this owner's manual and all labels on the Wet/Dry Vacuum cleaner before operating. Safety is a combination of common sense, staying alert and knowing how your vacuum works. Use this Wet/Dry Vac only as described in this manual. To reduce the risk of personal injury or damage to your Wet/Dry Vac, use only Vacmaster® recommended accessories.

SAVE THIS MANUAL FOR FUTURE REFERENCE.

When using an electrical appliance, basic precautions should always be followed including the following :

WARNING: TO REDUCE THE RISK OF FIRE, ELECTRIC SHOCK OR INJURY:

- This appliance complies with the compulsory safety regulations for electric equipment. However, improper use can be harmful to people and property. Please read these operating instructions through carefully and completely before switching the appliance on. Keep the operating instructions, the guarantee certificate, the receipt, as well as the packaging and packaging material if at all possible.
- This appliance is designed solely for use in the private sector and for the designated purpose. The appliance is not suitable for commercial use. Don't use the appliance outdoors. Don't subject the appliance to heat, direct sunshine or very high moisture (e.g. rain). Never immerse the appliance in liquids and be aware of sharp edges that may damage it.
- This wet/dry vacuum cleaner may only be used and kept in a private home.
- The appliance is designed to vacuum up materials that are not hazardous to your health and that are not flammable.
- Never hold the connectors in front of your face (especially your eyes, ears, etc.) Never direct the nozzle towards persons or animals.
- Only use the appliance for its designated purpose. Any other types of use are at your own risk and are possibly dangerous.
- Other uses and unattended operation are not allowed.

- The manufacturer cannot be made responsible for damages that are caused by improper use or incorrect operation.
- Connect the appliance only to a 220-240 volt alternating current receptacle. The receptacle should be protected by a 16-amp fuse.
- Make sure that the correct dust bag has been inserted securely in its holder before using the appliance. The wrong dust bag or incorrectly installed dust bags can cause damage to the appliance and cause the guarantee to become void.
- If the power cord is damaged, it must be completely replaced along by customer service.
- Do not vacuum cleaner up ashes, hot coals or the like, large fragments of glass and sharp objects.
- If you would like to vacuum up cold ashes, then you can do this with our ash tank. This special accessory can be obtained under the specified article number from your specialized dealer.
- Don't vacuum up any toner dust, which is used in printers and copiers for example, because it is electrically conductive. In addition, it is possible that it will not be completely filtered out by the filter system of the wet/dry vacuum cleaner and can be released into the air via the exhaust fan.
- Never vacuum asbestos or asbestos dust.
- Never vacuum flammable or poisonous liquids like petrol, oil, acids, or other volatile substances.
- Don't vacuum up liquids that are hotter than 60°C or any poisonous or flammable dusts.
- Never lay the appliance on its side. Pay particular attention to a horizontal position and adequate stability on stairs.
- Always unplug the appliance after use and before cleaning or changing the filters or accessories.
- Only trained specialists may make repairs on electric equipment. Improper repairs could result in considerable danger to the user.
- Do not store the appliance directly beside a hot oven or radiator.
- This appliance is not intended for use by persons (including children) with reduced physical, sensory or mental capabilities, or lack of experience and knowledge, unless they have been given supervision or instruction concerning use of the appliance by a person responsible for their safety.
- Children should be supervised to ensure that they do not play with the appliance.
- When cleaning or removing the appliance, always switch it off. The plug must be removed from the socket-outlet before cleaning or maintaining the

appliance. Pull the plug out of the receptacle, if you are not going to use the appliance for an extended period of time. Never pull on the cable to unplug the appliance, rather pull on the plug itself. Also, remove any special accessories from the appliance.

- Always keep the appliance clean. Don't use any solvents or cleaners that contain solvents for cleaning.
 - Never leave the appliance switched on unattended. If you leave the work area, switch the appliance off or unplug it from the receptacle (don't pull the cord, but use the plug).
 - In order to protect children from electric household appliances, make sure that the cable can't cause children to stumble and don't give children access to the appliance.
 - Never use the appliance when you are under the influence of medication, alcohol or drugs, if you are currently under medical care, or if you are tired.
 - Check the appliance and the power cord regularly for any possible damage. Don't use damaged appliances.
 - Don't try to repair the appliance yourself. Always use an authorized technician for repairs. Always have faulty power cords replaced immediately by the manufacturer or a qualified electrician. Use the same type of cable in order to prevent any danger of electric shock and injury.
 - Only use original spare parts and accessories. Non approved parts or third-party accessories may be a possible source or danger and cause the guarantee to become void.
 - Check the float often.
 - If you notice liquid leaking from your appliance, switch it off immediately and unplug it.
 - Don't put the appliance in water. Make sure that water is not spilled on the appliance.
 - When disposing of the wastewater, make sure that you observe any legal regulations.
 - Only store the appliance in a safe and dry location outside the reach of children.
 - Please also pay particular attention to the following "Special Safety Information".
- Special Safety Information:
- Never vacuum up hot ashes or pointed or sharp objects.
 - Never use the appliance in damp rooms.
 - Don't use the appliance without a dust bag (an exception is wet vacuuming). Make sure that the dust bag is inserted into the appliance correctly.
 - When using the appliance, make sure that no hair, clothing, or members are drawn in.

- Keep the vacuum cleaner away from heat sources such as radiant heaters, ovens, and so on.
- Do not run vac unattended

Disposal Information:

The appliance contains electric and electronic components and may not be disposed of as household garbage.

The local and currently applicable legislation must be observed unconditionally.

When using as blower:

- Direct air discharge only at work area.
- Do not use Wet/Dry Vac as a sprayer.
- Do not direct air at bystanders.
- Keep children away when blowing.
- Wear safety goggles.

DOUBLE INSULATION INSTRUCTIONS

This Wet/Dry Vac is double-insulated, eliminating the need for a separate grounding system. Use only identical replacements parts. Read the instructions for Servicing Double-Insulated Wet/Dry Vacs before servicing. Use this Wet/Dry Vac as described in this manual.

Observe the following warnings that appear on the motor housing of your Wet/Dry Vac.



DOUBLE INSULATED - GROUNDING NOT REQUIRED - WHEN SERVICING USE ONLY IDENTICAL REPLACEMENT PARTS.

WARNING: TO REDUCE THE RISK OF ELECTRIC SHOCK-DO NOT EXPOSE TO RAIN. STORE INDOORS.

WARNING: FOR YOUR OWN SAFETY, READ AND UNDERSTAND OPERATOR'S MANUAL. DO NOT RUN UNATTENDED. DO NOT PICK UP HOT ASHES, COALS, TOXIC, FLAMMABLE OR OTHER HAZARDOUS MATERIALS, DO NOT USE AROUND EXPLOSIVE LIQUIDS OR VAPORS.

CAUTION:

- Do not vacuum drywall dust or fireplace soot or ash with standard Wet/Dry filter. This is very fine dust which will not be captured by the filter and may cause

damage to motor. When vacuuming fine dust use a fine dust filter (sold separately).

WARNING: SERVICING OF DOUBLE-INSULATED WET/DRY VACUUM

WITH A DOUBLE-INSULATED WET/DRY VACUUM, TWO SYSTEMS OF INSULATION ARE PROVIDED INSTEAD OF GROUNDING. NO GROUNDING MEANS IS PROVIDED ON A DOUBLE-INSULATED APPLIANCE, NOR SHOULD A MEANS FOR GROUNDING BE ADDED. SERVICING A DOUBLE INSULATED WET/DRY VACUUM REQUIRES EXTREME CARE AND KNOWLEDGE OF THE SYSTEM, AND SHOULD BE DONE ONLY BY QUALIFIED SERVICE PERSONNEL. REPLACEMENT PARTS FOR A DOUBLE-INSULATED WET/DRY VACUUM MUST BE IDENTICAL TO THE PARTS THEY REPLACE. YOUR DOUBLE-INSULATED WET/DRY VAC IS MARKED WITH THE WORDS 'DOUBLE INSULATED' AND THE SYMBOL



(SQUARE WITHIN A SQUARE) MAY ALSO BE MARKED ON THE APPLIANCE.

• DO NOT use without filters in place.

CAUTION: TO REDUCE THE RISK OF INJURY FROM MOVING PARTS- UNPLUG BEFORE SERVICING.

SPECIFICATIONS

Motor	220-240V~50Hz	1250W.
Container	20ltr.	
Filter - Dry	Dust filter.	
Filter - Wet	Foam filter.	

ELECTRICAL SAFETY

WARNING! Read these electrical safety instructions thoroughly before connecting the product to the mains supply.

Before switching the product on, make sure that the voltage of your electricity supply is the same as that indicated on the rating plate. This product is designed to operate on 230V AC 50Hz. Connecting it to any other power source may cause damage.

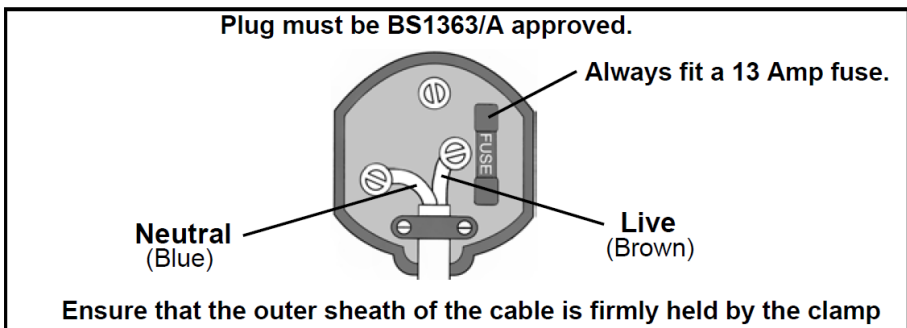
This product may be fitted with a non-rewireable plug. If it is necessary to change the fuse in the plug, the fuse cover must be refitted. If the fuse cover becomes lost or damaged, the plug must not be used until a suitable replacement is obtained.

If the plug has to be changed because it is not suitable for your socket, or due to damage, it should be cut off and a replacement fitted, following the wiring instructions shown below. The old plug must be disposed of safely, as insertion into a mains socket could cause an electrical hazard.

WARNING! The wires in the power cable of this product are coloured in accordance with the following code: Blue = Neutral Brown = Live

If the colours of the wires in the power cable of this product do not correspond with the markings on the terminals of your plug, proceed as follows.

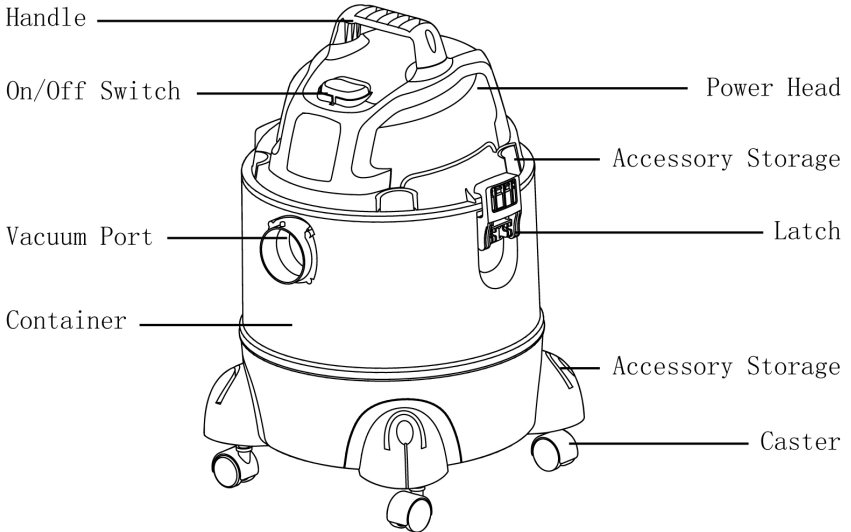
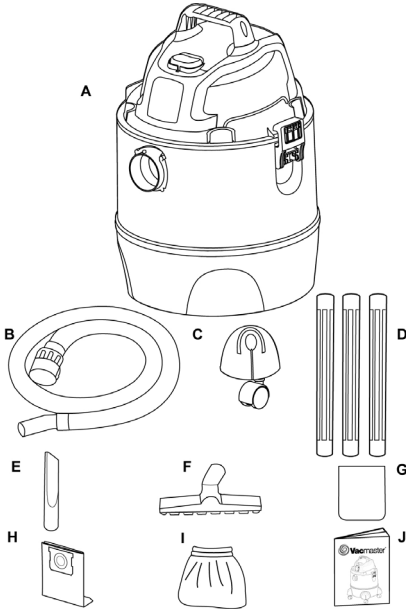
- The wire which is coloured **Blue** must be connected to the terminal which is marked **N** or coloured **Black**.
- The wire which is coloured **Brown** must be connected to the terminal which is marked **L** or coloured **Red**.



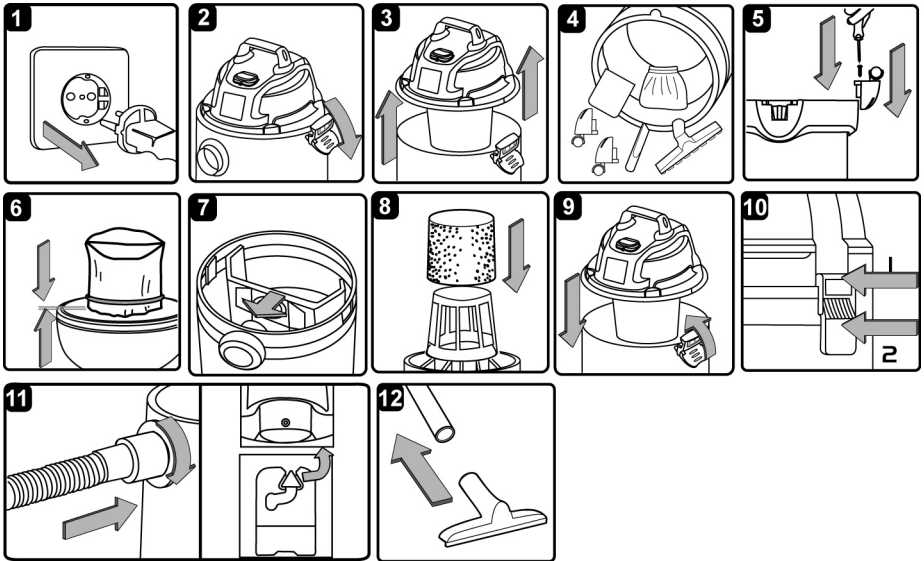
UNPACKING AND CHECKING CARTON

1. Overview of the Appliance Components

A	Vac assembly.....	1
B	Hose.....	1
C	Caster	4
D	Extension wands.....	3
E	Crevice tool.....	1
F	Floor brush.....	1
G	Foam filter.....	1
H	Dust bag.....	1
I	Dust filter.....	1
J	Operator's manual.....	1



GENERAL ASSEMBLY INSTRUCTIONS



- 3.1 Verify that the power cord is disconnected from the power outlet.(As show in fig.1)
- 3.2. Undo the latches. (fig.2)
- 3.3. Lift the power head off the container. (fig.3)
- 3.4. Remove the contents from inside the container; make sure you have all contents as listed. (fig.4)
- 3.5. Insert the casters into the socket on to bottom of the container and apply pressure until castors snap into place (fig.5)
- 3.6. Your vacuum comes ready for dry vacuum cleaning with dust filter. If the dust filter is not installed, refer to page 13 for filter installation. (fig.6)
- 3.7. Optional, for improved dust bag, fit dust bag flange onto the inlet stub, taking care not to damage the bag. (fig.7)
- 3.8. For wet vacuum cleaning, install the supplied foam filter. If foam filter is not installed, refer to page 14 for filter installation (fig.8)
- 3.9. Place the power head back on the container, and secure into place using the 2 side latches. (fig.9 & fig.10)
- 3.10. Insert the locking end of the hose into the port of the container and turn to lock in to place. (fig.11)

3.11 Choose the desired accessories and extension wands and push onto the suction tube.(fig.12)

DRY VACUUM OPERATION

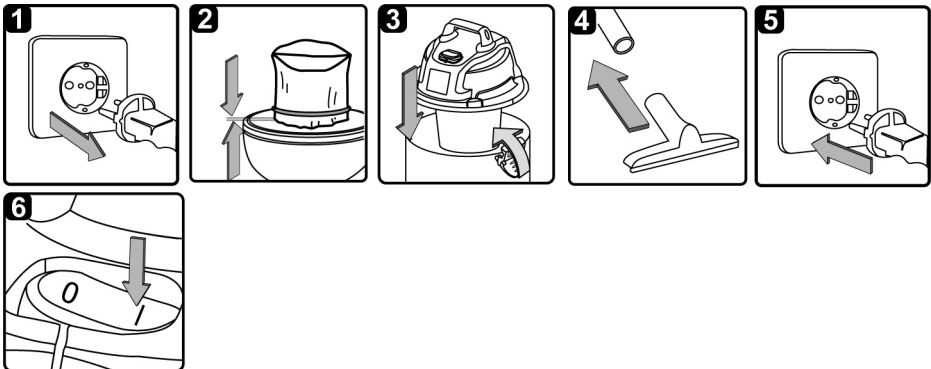
WARNING! Ensure you read, understand and apply Section 1 'Safety Instructions'.

Reminder: DO NOT vacuum hazardous substances. Use of an incorrect dust bag will invalidate your warranty.

- 4.1. Verify that the power cord is disconnected from the outlet.(fig.1)
- 4.2. Remove the top section and fit optional dust filter flange onto the inlet stub, taking care not to damage the filter. (fig. 2)
- 4.3. Place the power head back on the container, and secure it in place using the latches. (fig.3)
- 4.4. Insert the locking end of the hose into the vacuum port and screw in place. Push the required attachment onto the free end of the hose or extension.(fig.4)
- 4.5. Plug in the power cord in to the outlet.(fig.5)
- 4.6 .Turn the motor on by dipping the switch to the "I" ON position.(fig.6)
- 4.7. Once you have completed vacuuming. flip the switch to the "o" OFF position and unplug the power cord from the outlet.

O = OFF I = ON

DO NOT USE THE DUST FILTER FOR LIQUID VACUUMING



LIQUID VACUUM OPERATION



WARNING: BE SURE TO READ, UNDERSTAND, AND APPLY INFORMATION, ENTITLED 'SAFETY INSTRUCTIONS & WARNINGS'. DO NOT VACUUM IN AREAS WITH FLAMMABLE GASES, VAPORS, OR EXPLOSIVE DUSTS IN THE AIR. FLAMMABLE GASES OR VAPORS INCLUDE BUT ARE NOT LIMITED TO; LIGHTER FLUID, SOLVENT TYPE CLEANERS, OIL-BASE PAINTS, GASOLINE, ALCOHOL OR AEROSOL SPRAYS. EXPLOSIVE DUSTS INCLUDE BUT ARE NOT LIMITED TO; COAL, MAGNESIUM, GRAIN OR GUN POWDER. TO REDUCE THE RISK OF HEALTH HAZARDS FROM VAPORS OR DUST, DO NOT VACUUM TOXIC MATERIALS. **WARNING: DO NOT PLUG IN POWER CORD TO POWER OUTLET, MAKE SURE PLUG IS DISCONNECTED BEFORE ASSEMBLING THE WET/DRY VAC**

- 5.1. Verify that the power cord is disconnected from the outlet. Verify that the container is clean and free of dust and dirt. (fig. 1)
- 5.2. Remove dust filter, then carefully install the foam filter over the filter cage and place the power head back on the container. (fig. 2)

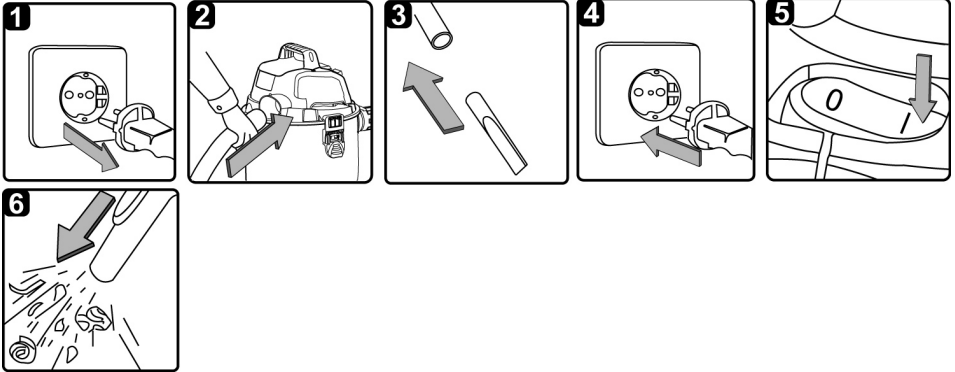
DO NOT USE THE DUST FILTER FOR LIQUID VACUUMING. OPERATING INSTRUCTIONS – WET VACUUMING

- 5.3. Fit the desired nozzle to the vacuum hose. (fig. 3)
- 5.4. Verify that the switch is in the 'O' OFF position before plugging the power cord into the outlet.(fig. 4)
- 5.5. Turn the motor on by flipping the switch to the 'I' ON position.(fig. 5)
- 5.6. After use, empty the tank and dry.

IMPORTANT! When vacuuming large quantities of liquids, do not immerse the nozzle completely in the liquid; leave a gap at the tip of the nozzle opening to allow air inflow. The machine is fitted with a float valve that stops the suction action when the container reaches its maximum capacity. You will notice an increase in motor speed. When this happens, turn off the machine, disconnect from power supply, and drain the liquid into a suitable receptacle or drain. To continue vacuuming, refit the container with the drain cap. After wet vacuuming, turn the machine off and remove plug from power supply. Empty the container, clean and dry the inside and outside before storage.

REMEMBER! The foam filter must be removed after wet vacuuming, and a cartridge filter must be installed before dry vacuuming again.

BLOWING OPERATION



This Wet/Dry Vac has blowing capabilities.

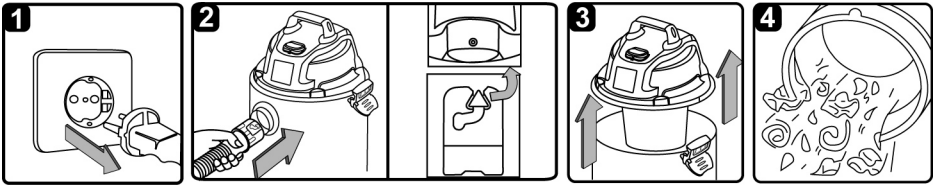
To use the blower feature follow the instructions listed.

WARNING: KEEP BYSTANDERS CLEAR FROM BLOWING DEBRIS.

WARNING: WEAR A DUST MASK IF BLOWING CREATES DUST THAT MIGHT BE INHALED.

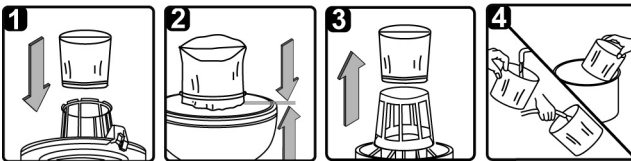
- 6.1. Verify that the power cord is disconnected from the outlet.(fig. 1)
- 6.2. Make sure the container is empty before using as a blower.
- 6.3. Remove hose from the vacuum port
- 6.4. Insert the locking end of the hose into the blowing port on the back side of the power head and lock into position.(fig. 2)
- 6.5. Fit the desired extension wand or nozzle to the vacuum hose.(fig.3)
- 6.6. Ensure the power switch is turned off and plug in the power supply. (fig. 4)
- 6.7 Before turning on the vac, firmly hold loose end of the hose. Turn the motor on by flipping the switch to the 'I' ON position.(fig. 5)

MAINTENANCE



- 7.1. Verify that the power cord is disconnected from the outlet. (fig.1)
- 7.2. Disconnect the hose from the vacuum, turning large end in counter clockwise direction. (fig.2)
- 7.3. Undo the latches and remove the power head from the container. (fig.3)
- 7.4. Clear all dirt or debris from the container and hose. (fig.4)
- 7.5. Check the hose, attachments, and power cord to verify that they have not been damaged.

INSTALLING & CLEANING DUST FILTER



Installing Dust Filter

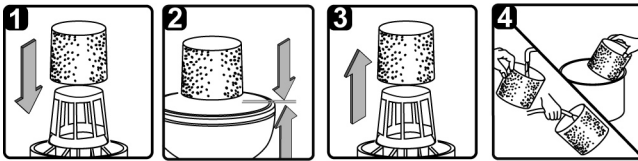
- 8.1. Verify that the power cord is disconnected from the outlet.
- 8.2. Remove power head and place in upside down position.
- 8.3. Slide dust filter down over the filter cage making sure the whole cage is covered. (fig.1 & 2)
- 8.4. Replace the power head on to the container.

Removing and Cleaning Dust Filter

- 8.5. With the removed power head in the upside down position.

- 8.6. Carefully remove the dust filter from the filter cage. (fig. 3) Clean the filter by gently tapping or brushing dirt off. Cleaning should not be done indoors in living areas.
- 8.7 Use a mild soap and water solution to wash dust filter and rinse with clean water. (fig. 4)
- 8.8 Allow the wet filter to air dry for 24 hours before installing onto the filter cage.

INSTALLING & CLEANING FOAM FILTER



Installing Foam Filter

- 9.1. Verify that the power cord is disconnected from the outlet
- 9.2. Remove power head and place in upside down position. Follow instructions to remove dust filter.
- 9.3. Carefully slide foam filter down over the filter cage making sure the whole cage is covered. (fig.1 & 2)
- 9.4. Replace the power head on to the container.

Cleaning Foam Filter

- 9.5. With the removed power head in the upside down position, carefully remove foam filter. (fig.3)
- 9.6. Use a mild soap and water solution to wash foam filter and rinse with clean water. (fig.4)
- 9.7. Allow filter to air dry before installing and using again.

TROUBLE SHOOTING

WARNING: TO REDUCE THE RISK OF ELECTRIC SHOCK-UNPLUG BEFORE TROUBLESHOOTING

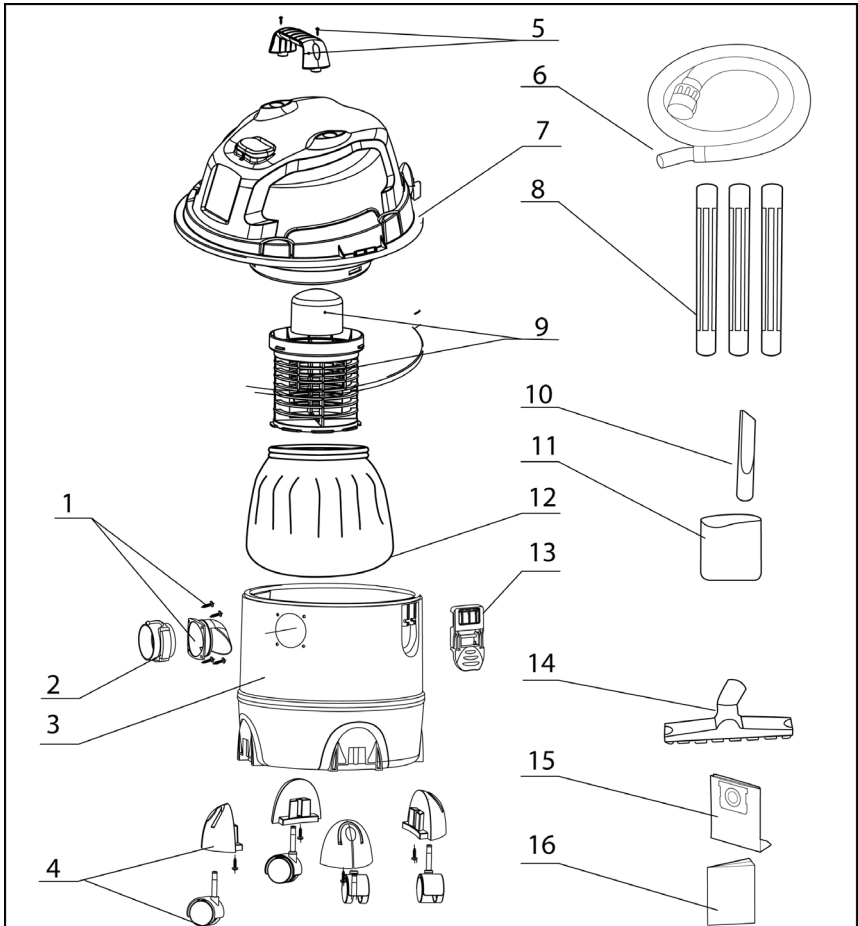
<p>The appliance doesn't work</p>	<p>No power Functional fault in the power cord, switch, or motor Tank is full of liquid</p>	<p>Check the power supply. Have the damaged part checked by qualified personnel or replace it. Empty the tank</p>
<p>Dust is escaping from the motor cover</p>	<p>The dust bag is missing or damaged</p>	<p>Put in a dust bag or replace it.</p>
<p>Low suction power and high motor speed / vibrations</p>	<p>Dust bag is full Suction nozzle, hose, or tank inlet is plugged.</p>	<p>Replace the dust bag Check the suction nozzle, hose, and tank inlet for obstructions.</p>

Correct Disposal of this product

This marking indicates that this product should not be disposed with other household wastes throughout the EU. To prevent possible harm to the environment or human health from uncontrolled waste disposal, recycle it responsibly to promote the sustainable reuse of material resources. To return your used device, please use the return and collection systems or contact the retailer where the product was purchased. They can take this product for environmental safe recycling.



EXPLODED VIEW AND PARTS LIST



VQ1220PF Manual Parts List

Key Number	Drawing Number	Description	Quantity	Key Number	Drawing Number	Description	Quantity
1	TVQTXK.04.02	Vacuum port deflector	1	9	VJ01PF.13.00	Float & filter cage	1
2	TVQTXK.06.01	Vacuum port assembly	1	10	VJ01PF.13.00	Crevice tool	1
3	VM01PO.20.11 VM01PF.20.01	Container	1	11	FV9501.01.00	Foam filter	1
4	TVQTJL.04.00 TVQTJC.04.01	Caster assembly	4	12	FV9644.01.00	Dust filter	1
5	VL01S0.10.05	Handle assembly	1	13	TVQTDK.04.00	Latch assembly	2
6	FV8842.02.00	Hose	1	14	FV8704.00.00	Floor brush	1
7	VQ03PF.50.00	Power head assembly	1	15	FV9612.01.00	Dust bag	1
8	FV8903.01.01	Extension wands	3	16	VQ01BZ.20.60.01	Operator's manual	1



Suzhou Cleva Electric Appliance Co.,Ltd.
8, Ting Rong street, Suzhou Industry park, Suzhou, China

GB EC declaration of conformity for wet/dry vacuum cleaner declares conformity with the EU directive and standards marked below for the article

VQ1220PF

- | | |
|---|---|
| <input checked="" type="checkbox"/> 2002/95/EC | <input type="checkbox"/> 87/404/EEC |
| <input checked="" type="checkbox"/> 2006/95/EC | <input type="checkbox"/> R&TTED 1999/5/EC |
| <input checked="" type="checkbox"/> 2002/96/EC | <input type="checkbox"/> 2000/14/EG_2005/88/EC: |
| <input checked="" type="checkbox"/> 2004/108/EC | <input type="checkbox"/> 95/54/EC: |
| <input type="checkbox"/> 90/396/EEC | <input type="checkbox"/> 97/68/EC: |
| <input type="checkbox"/> 89/686/EEC | |

EN 60335-1; EN 60335-2-2; EN 55014-1; EN 55014-2; EN 61000-3-2; EN 61000-3-3
EN50366

Quality Manager _____



Distributed by:

