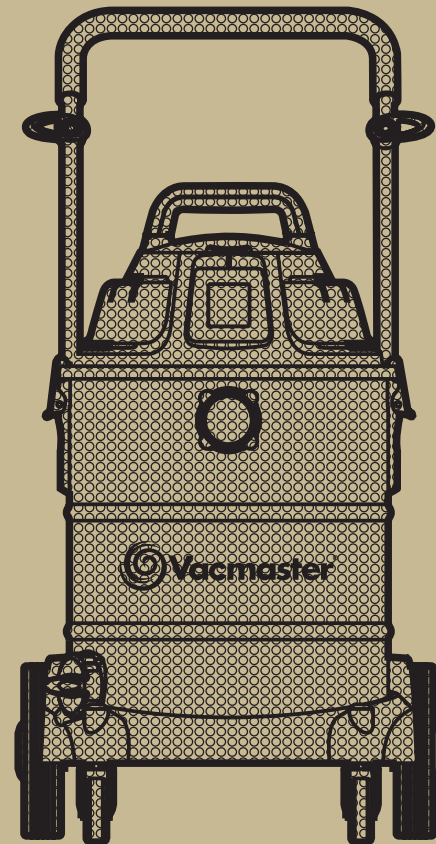




GB VK1650SWD 950091 WET AND DRY VACUUM CLEANER



WET & DRY
VACUUM CLEANER

1600W / 50L / VK1650SWD 950091



T ABLE OF CONTENTS

SECTI	FPAGE
Warranty	3
Safety Instructions and Warnings	3
Double Insulation Instructions	4
Specifications	5
Unpacking and Checking Carton Contents	5
General Assembly Instructions	6
Dry Vacuum Operation	6
Wet Vacuum Operation	7
Maintenance	8
Installing & Cleaning Cartridge Filter	9
Troubleshooting	9
Exploded View and Parts List	10

Thank you for purchasing this Vacmaster® wet/dry vacuum cleaner. Feel confident that with Vacmaster® you are obtaining a high quality product engineered for optimal performance. This vacuum is capable of picking up liquids and dry materials.

FOR YOUR SAFETY CAREFULLY READ AND UNDERSTAND ALL INSTRUCTIONS.

WARRANTY

Vacmaster® takes pride in producing a high quality, durable product. This Vacmaster® product carries a limited two (2) year warranty against defects in workmanship and materials from date of purchase under normal household use. If product is to be used for commercial, industrial or rental use, a 90 day limited warranty will apply. Warranty does not apply to defects due to direct or indirect abuse, negligence, misuse, accidents, repairs or alterations and lack of maintenance. Please keep your receipt as proof of purchase. This warranty gives you specific legal rights, and you may have other rights, which vary from state to state.

SAFETY INSTRUCTIONS & WARNINGS

- This appliance complies with the compulsory safety regulations for electric equipment. However, improper use can be harmful to people and property. Please read these operating instructions through carefully and completely before switching the appliance on. Keep the operating instructions, the guarantee certificate, the receipt, as well as the packaging and packaging material if at all possible.
- This appliance is designed solely for use in the private sector and for the designated purpose. The appliance is not suitable for commercial use. Don't use the appliance outdoors (unless it has been specifically designed for use outdoors). Don't subject the appliance to heat, direct sunshine or very high moisture (e.g. rain). Never immerse the appliance in liquids and be aware of sharp edges that may damage it.
- This wet/dry vacuum cleaner may only be used and kept in a private home.
- The appliance is designed to vacuum up materials that are not hazardous to your health and that are not flammable.
- Never hold the connectors in front of your face (Especially your eyes, ears, etc.) Never direct the nozzle towards persons or animals.
- Only use the appliance for its designated purpose-se. Any other types of use are at your own risk and are possibly dangerous.
- Other uses and unattended operation are not allowed.
- The manufacturer cannot be made responsible for damages that are caused by improper use or incorrect operation.
- Connect the appliance only to a 230 volt alternate-ting current receptacle. The

receptacle should be protected by a 16-amp fuse.

- Make sure that the correct dust bag has been inserted securely in its holder before using the appliance. The wrong dust bag or incorrectly installed dust bags can cause damage to the appliance and cause the guarantee to become void.
- If the power cord is damaged, it must be completely replaced along by customer service.
- Do not vacuum up ashes, hot coals or the like, large fragments of glass and sharp objects.
- Don't vacuum up any toner dust, which is used in printers and copiers for example, because it is electrically conductive. In addition, it is possible that it will not be completely filtered out by the filter system of the wet/dry vacuum cleaner and can be released into the air via the exhaust fan.
- Never vacuum asbestos or asbestos dust.
- Never vacuum flammable or poisonous liquids like petrol, oil, acids, or other volatile substances.
- Don't vacuum up liquids that are hotter than 60°C or any poisonous or flammable dusts.
- Never lay the appliance on its side. Pay particular attention to a horizontal position and adequate stability on stairs.
- Always unplug the appliance after use and before cleaning or changing the filters or accessories.
- Only trained specialists may make repairs on electric equipment. Improper repairs could result in considerable danger to the user.
- Do not store the appliance directly beside a hot oven or radiator.
- Children, disabled persons, and the aged are often not aware of the dangers that can result from handling electric appliances. The above-mentioned persons and untrained persons must never work with this electrical appliance.
- When cleaning or removing the appliance, al-ways switch it off. Pull the plug out of the receptacle, if you are not going to use the appliance for an extended period of time. Never pull on the cable to unplug the appliance, rather pull on the plug itself. Also, remove any special accessories from the appliance.
- Always keep the appliance clean. Don't use any solvents or cleaners that contain solvents for cleaning.
- Never leave the appliance switched on unit-tended. If you leave the work area, switch the appliance off or unplug it from the receptacle (don't pull the cord, but use the plug).
- In order to protect children from electric household appliances, make sure that the cable can't cause children to stumble and don't give children access to the

appliance.

- Never use the appliance when you are under the influence of medication, alcohol or drugs, if you are currently under medical care, or if you are tired.
- Check the appliance and the power cord regularly for any possible damage. Don't use damaged appliances.
- Don't try to repair the appliance yourself. Always use an authorized technician for repairs. Always have faulty power cords replaced immediately by the manufacturer or a qualified electrician. Use the same type of cable in order to prevent any danger of electric shock and injury.
- Only use original spare parts and accessories. None approved parts or third-party accessories may be a possible source or danger and cause the guarantee to become void.
- Check the float often.
- If you notice liquid leaking from your appliance, switch it off immediately and unplug it.
- Don't put the appliance in water. Make sure that water is not spilled on the appliance.
- When disposing of the wastewater, make sure that you observe any legal regulations.
- Only store the appliance in a safe and dry location-on outside the reach of children.
- Please also pay particular attention to the follow-wing "Special Safety Information".

SPECIAL SAFETY INFORMATION

- Never vacuum up hot ashes or pointed or sharp objects.
- Never use the appliance in damp rooms.
- Don't use the appliance without a dust bag (an exception is wet vacuuming). Make sure that the dust bag is inserted into the appliance correctly.
- When using the appliance, make sure that no hair, clothing, or members are drawn in.
- Keep the vacuum cleaner away from heat sources such as radiant heaters, ovens, and so on.

DISPOSAL INFORMATION

The appliance contains electric and electronic components and may not be disposed of as household garbage. The local and currently applicable legislation must be observed unconditionally.

DOUBLE INSULATION INSTRUCTIONS

This Wet/Dry Vac is double-insulated, eliminating the need for a separate grounding system. Use only identical replacements parts. Read the instructions for Servicing Double-Insulated Wet/Dry Vacs before servicing. Use this Wet/Dry Vac as described in this manual. Observe the following warnings that appear on the motor housing of your Wet/Dry Vac.


DOUBLE INSULATED - GROUNDING NOT REQUIRED - WHEN SERVICING USE ONLY IDENTICAL REPLACEMENT PARTS.

WARNING: TO REDUCE THE RISK OF ELECTRIC SHOCK-DO NOT EXPOSE TO RAIN. STORE INDOORS.

WARNING: FOR YOUR OWN SAFETY, READ AND UNDERSTAND OPERATOR'S MANUAL. DO NOT RUN UNATTENDED. DO NOT PICK UP HOT ASHES, COALS, TOXIC, FLAMMABLE OR OTHER HAZARDOUS MATERIALS, DO NOT USE AROUND EXPLOSIVE LIQUIDS OR VAPORS.

CAUTION:

- Do not vacuum drywall dust or fireplace soot or ash with standard Wet/Dry filter. This is very fine dust which will not be captured by the filter and may cause damage to motor. When vacuuming fine dust use a fine dust filter (sold separately).

WARNING: SERVICING OF DOUBLE-INSULATED WET/DRY VACUUM WITH A DOUBLE-INSULATED WET/DRY VACUUM, TWO SYSTEMS OF INSULATION ARE PROVIDED INSTEAD OF GROUNDING. NO GROUNDING MEANS IS PROVIDED ON A DOUBLE-INSULATED APPLIANCE, NOR SHOULD A MEANS FOR GROUNDING BE ADDED. SERVICING A DOUBLE INSULATED WET/DRY VACUUM REQUIRES EXTREME CARE AND KNOWLEDGE OF THE SYSTEM, AND SHOULD BE DONE ONLY BY QUALIFIED SERVICE PERSONNEL. REPLACEMENT PARTS FOR A DOUBLE-INSULATED WET/DRY VACUUM MUST BE IDENTICAL TO THE PARTS THEY REPLACE. YOUR DOUBLE-INSULATED WET/DRY VAC IS MARKED WITH THE WORDS 'DOUBLE INSULATED' AND THE SYMBOL  (SQUARE WITHIN A SQUARE) MAY ALSO BE MARKED ON THE APPLIANCE.

- DO NOT use without filters in place.

CAUTION: TO REDUCE THE RISK OF INJURY FROM MOVING PARTS- UNPLUG BEFORE SERVICING.

SPECIFICATIONS

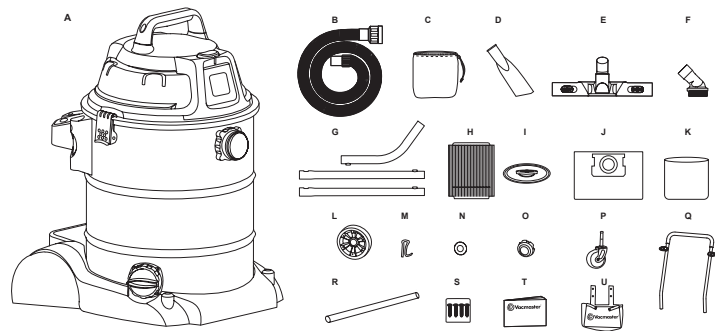
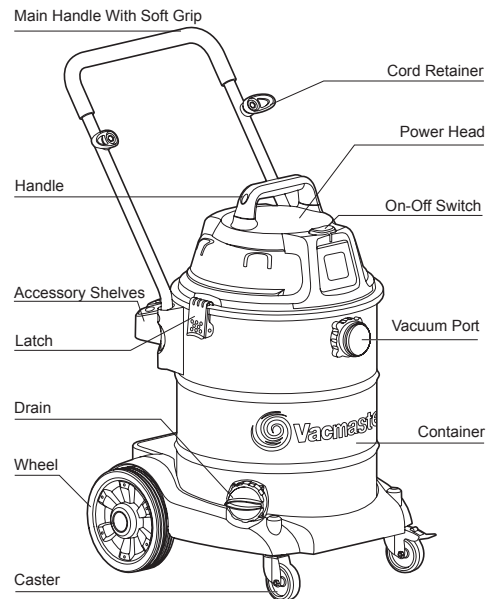
Motor:	230V-50Hz
Container:	30L
Watt:	1600W
Filter-Dry:	PET Cartridge Filter & Dust Bag
Filter-Wet:	Foam Sleeve Filter

UNPACKING AND CHECKING CARTON CONTENTS

Remove entire contents of carton. Check each item against the carton contents list.

Carton Contents List

Key	Description	QTY
A	Vac Assembly	1
B	Hose	1
C	PRE Cloth Filter	1
D	Crevice Car Nozzle	1
E	Floor Brush/Squeegee	1
F	Round Dust Brush	1
G	3 Coated Tube One Bended	3
H	PET Cartridge Filter	1
I	Filter Retainer	1
J	Collection Bag	1
K	Foam Sleeve Filter	1
L	Rear Wheels	2
M	'R' Lock Pins	2
N	Washers	2
O	Wheel Shaft	1
P	Caster	2
Q	Push Handle	2
R	Hub Caps	1
S	Screws (Bag)	4
T	Operator's Manual	1
U	Accessory Pouch	1

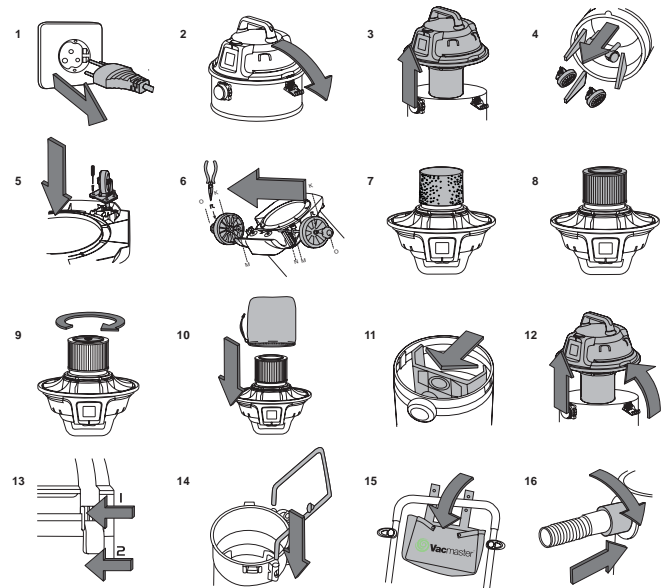


GENERAL ASSEMBLY INSTRUCTIONS

WARNING: DO NOT PLUG IN POWER CORD TO POWER OUTLET, MAKE SURE PLUG IS DISCONNECTED BEFORE ASSEMBLING THE WET/DRY VAC

UNPACKING YOUR WET/DRY VACUUM & GENERAL ASSEMBLY

1. Undo the latches. (As show in fig.2)
2. Lift the power head off the container. (fig.3)
3. Remove the contents from inside the container, make sure you have all contents as listed on page12. (fig.4)
4. With the power head removed, turn the container upside down. Insert the two casters into the socket on to bottom of the castor feet and tighten one castor with 4 screws.(fig.5)
5. Insert the rear wheel shaft (N) into the rear support block. Insert washer (M) on the shaft, then insert rear wheel (K) on the shaft. Insert the 'R' lock pin (L) into the hole on the end of the shaft to lock the wheel. Snap the hub cap (O) on to the wheel. Repeat the same steps at the other end of the shaft. Please notice you must install the hub cap on to the wheel , otherwise the 'R' lock pin will come loose result in wheel do not work .(fig. 6)
6. For wet vacuum cleaning, install the supplied foam filter. (fig. 7) See page 11 for filter installation.
7. Your vacuum comes ready for dry vacuum cleaning with PET cartridge filter pre-installed. If cartridge filter is not installed, refer to page 16 for filter installation. (fig.8&fig.9)The PET cartridge filter fit for wet & dry vacuum cleaning.
8. Put the PRE cloth filter over the filter tray with the attached PET cartridge filter. (fig.10)
9. Optional, for improved dust filtering, fit collection bag flange onto the inlet stub, taking care not to damage the bag. (fig.11)
10. Place the power head back on the container, and secure into place using the 2 side latches. (fig.12&fig.13)
11. Insert the push handle into the handle sockets mounted on the sides of the tank. Push down until the lock pin clicks in place. (fig.14)
12. Secure the large end of the hose into the vacuum port on the container and screw into place. (fig.15)
13. Choose the desired accessories and extension wands and push onto the suction tube. (fig.16)



DRY-VACUUM OPERATION

WARNING: BE SURE TO READ, UNDERSTAND, AND APPLY INFORMATION, ENTITLED 'SAFETY INSTRUCTIONS & WARNINGS'. DO NOT VACUUM IN AREAS WITH FLAMMABLE GASES, VAPORS, OR EXPLOSIVE DUSTS IN THE AIR. FLAMMABLE GASES OR VAPORS INCLUDE BUT ARE NOT LIMITED TO; LIGHTER FLUID, SOLVENT TYPE CLEANERS, OIL-BASE PAINTS, GASOLINE, ALCOHOL OR AEROSOL SPRAYS. EXPLOSIVE DUSTS INCLUDE BUT ARE NOT LIMITED TO; COAL, MAGNESIUM, GRAIN OR GUN POWDER. TO REDUCE THE RISK OF HEALTH HAZARDS FROM VAPORS OR DUST, DO NOT VACUUM TOXIC MATERIALS.

WARNING: DO NOT PLUG IN POWER CORD TO POWER OUTLET. MAKE SURE PLUG IS DISCONNECTED BEFORE CHANGING AND CLEANING FILTERS.

1. Verify that the power cord is disconnected from the outlet. (fig.1)
2. In order to prepare your vacuum for dry vacuuming, verify that the PET cartridge filter is securely mounted. Make sure the filter is pushed in until it stops against the power head. (fig.2) (Your Wet/Dry Vac comes with the cartridge filter pre-installed, if not see page 16 for installation instructions.)
3. Place filter retainer on top of PET cartridge filter and tighten down by turning the retainer handle clockwise. (fig.3)
4. Put the PRE cloth filter over the filter tray with the attached PET cartridge filter. (fig.4)
5. Optional, for improved dust filtering, fit collection bag flange onto the inlet stub, taking care not to damage the bag. (fig.5)
6. Place the power head back on the container, and secure it in place using the latches. (fig.6)

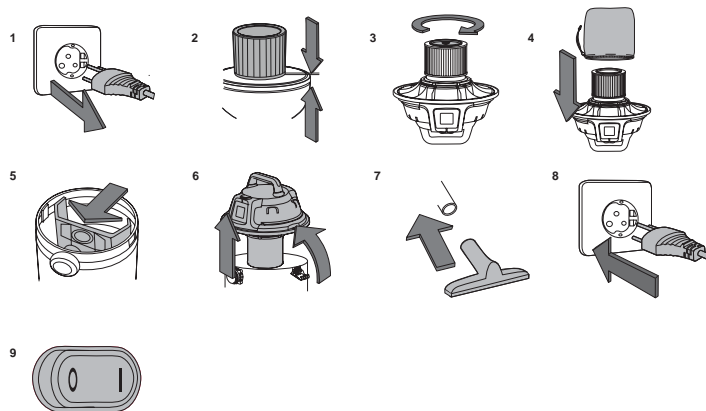
OPERATING INSTRUCTIONS: DRY VACUUMING

7. Insert the locking end of the hose into the vacuum port and screw in place. Push the required attachment onto the free end of the hose or extension. (fig.7)
8. Plug in the power cord into the outlet. (fig.8)
9. Turn the motor on by flipping the switch to the 'I' ON position. (fig.9)
10. Once you have completed vacuuming, flip the switch to the 'O' OFF position and unplug the power cord from the outlet.

O = OFF

I = ON

DO NOT USE COLLECTION BAG FOR LIQUID VACUUMING



WET-VACUUM OPERATION

WARNING: BE SURE TO READ, UNDERSTAND, AND APPLY INFORMATION, ENTITLED 'SAFETY INSTRUCTIONS & WARNINGS'. DO NOT VACUUM IN AREAS WITH FLAMMABLE GASES, VAPORS, OR EXPLOSIVE DUSTS IN THE AIR. FLAMMABLE GASES OR VAPORS INCLUDE BUT ARE NOT LIMITED TO; LIGHTER FLUID, SOLVENT TYPE CLEANERS, OIL-BASE PAINTS, GASOLINE, ALCOHOL OR AEROSOL SPRAYS. EXPLOSIVE DUSTS INCLUDE BUT ARE NOT LIMITED TO; COAL, MAGNESIUM, GRAIN OR GUN POWDER. TO REDUCE THE RISK OF HEALTH HAZARDS FROM VAPORS OR DUST, DO NOT VACUUM TOXIC MATERIALS.

WARNING: DO NOT PLUG IN POWER CORD TO POWER OUTLET. MAKE SURE PLUG IS DISCONNECTED BEFORE CHANGING AND CLEANING FILTERS.

**DO NOT USE THE CARTRIDGE FILTER FOR LIQUID VACUUMING.
DO NOT USE COLLECTION BAG FOR LIQUID VACUUMING.**

OPERATING INSTRUCTIONS – WET VACUUMING

1. Verify that the power cord is disconnected from the outlet. (fig.1) Make sure that the container is clean and free from dust and dirt.

MAINTENANCE

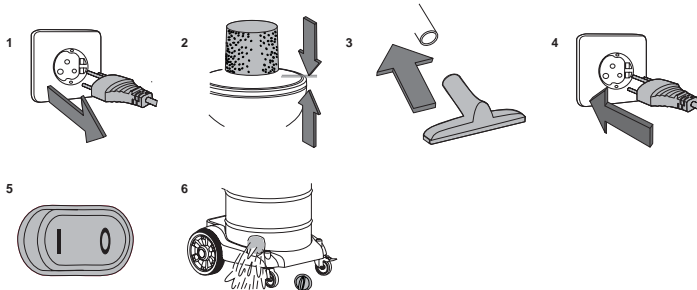
2. Remove collection bag & cartridge filter, then carefully install the foam sleeve filter over the filter cage and place the power head back on the container. (fig. 2) See filter installing instructions on page 10.
3. Fit the desired nozzle to the vacuum hose. (fig.3)
4. Verify that the switch is in the 'O' OFF position before plugging the power cord into the outlet. (fig.4)
5. Turn the motor on by flipping the switch to the 'I' ON position. (fig.5)

OPERATING INSTRUCTIONS – WET VACUUMING

6. Turn the vacuum off.
7. After use, empty the container by unscrewing the drain cap and drain liquids into suitable receptacle or drain. (fig.6) Remember to refit the drain cap to the container after draining container.

IMPORTANT! When vacuuming large quantities of liquids, do not immerse the nozzle completely in the liquid; leave a gap at the tip of the nozzle opening to allow air inflow. The machine is fitted with a float valve that stops the suction action when the container reaches its maximum capacity. You will notice an increase in motor speed. When this happens, turn off the machine, disconnect from power supply, and drain the liquid into a suitable receptacle or drain. To continue vacuuming, refit the container with the drain cap. After wet vacuuming, turn the machine off and remove plug from power supply. Empty the container, clean and dry the inside and outside before storage.

REMEMBER! The collection bag must be removed in wet vacuuming.



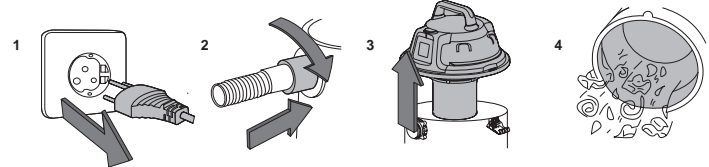
WARNING: DO NOT PLUG IN POWER CORD TO POWER OUTLET. MAKE SURE PLUG IS DISCONNECTED BEFORE CHANGING AND CLEANING FILTERS.

1. Verify that the power cord is disconnected from the outlet. (fig.1)
2. Disconnect the hose from the vacuum, turning large end in counter clockwise direction. (fig.2)
3. Undo the latches and remove the power head from the container. (fig.3)
4. Clear all dirt or debris from the container and hose. (fig.4)
5. Check the hose, attachments, and power cord to verify that they have not been damaged.

IMPORTANT! Clean or change the cartridge filter regularly for best performance. ALWAYS USE CARTRIDGE FILTER FOR DRY VACUUMING. If the machine is used with out the cartridge filter, the motor will burn out and the warranty will be voided. Always keep spare filters on-hand.

NOTICE! The filters included are made of high quality materials designed to stop small dust particles. The cartridge filter should be used for dry pick-up only. A dry cartridge filter is necessary to pick up dust. If the cartridge filter is wet, it will clog quickly and be very difficult to clean. Handle the filter carefully when removing it for cleaning and replacing it. Check the filters for tears or small holes, a small hole can let dust pass through and out of the cleaner. Do not use a filter with holes or tears, replace it immediately.

WARNING! ALWAYS DISCONNECT THE PLUG FROM THE POWER OUTLET BEFORE REMOVING THE POWER HEAD FROM CONTAINER.



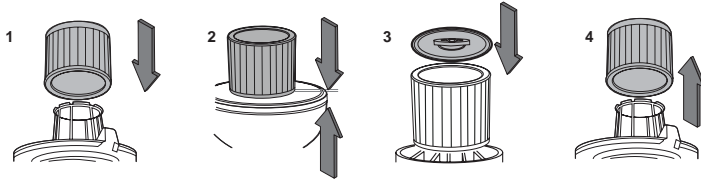
INSTALLING & CLEANING CARTRIDGE FILTERS

Installing Cartridge Filter

1. Remove power head and place in upside down position.
2. Slide the cartridge filter down over the filter cage and carefully push filter in until it stops against the power head. (fig.1 & 2)
3. Place filter retainer on top of cartridge filter and tighten down by turning retainer handle clockwise. (fig.3 & 4)

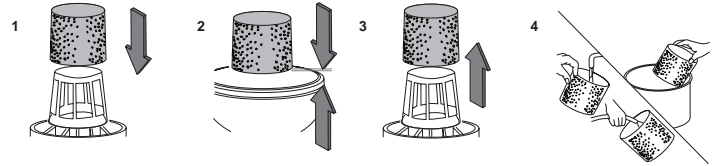
Removing and Cleaning Cartridge Filter

1. Unlock and remove the filter retainer by turning retainer handle counter clockwise.
2. Carefully hold and pull the cartridge filter up for removal. (fig.5)
3. Clean the cartridge filter by gently tapping or brushing dirt off. Cleaning should not be done indoors in living areas. For optimal performance a new filter is recommended.
4. Install cleaned or new filter into place as instructed above in steps 2 and 3 of installing Cartridge Filter.
5. Wet filters should be removed and allowed to air dry for 24 hours before installing onto the filter cage.



water. (fig. 4)

3. Allow filter to air dry before installing and using again.



TROUBLESHOOTING

Symptom	Possible Causes	Corrective Action
Vacuum will not operate	1) No power supply.	1) Check power supply – cord, breakers, fuses.
	2) Faulty power cord.	2) Unplug and check the power cord. If damaged, have it repaired by a professional.
	3) Container full.	3) Empty container.
Dust comes out from motor cover.	1) The PET cartridge filter or collection bag is missing or damaged.	1) Attach or replace PET cartridge filter or collection bag.
Reduced efficiency and motor/speed vibration.	1) There is a blockage in the nozzle or hose, or the container inlet. Or dust filter blocked by fine dust.	1) Check nozzle, hose and container inlets for blockage. Take off the filter and clean it. Or install new cartridge filter.

INSTALLING & CLEANING FOAM SLEEVE FILTER

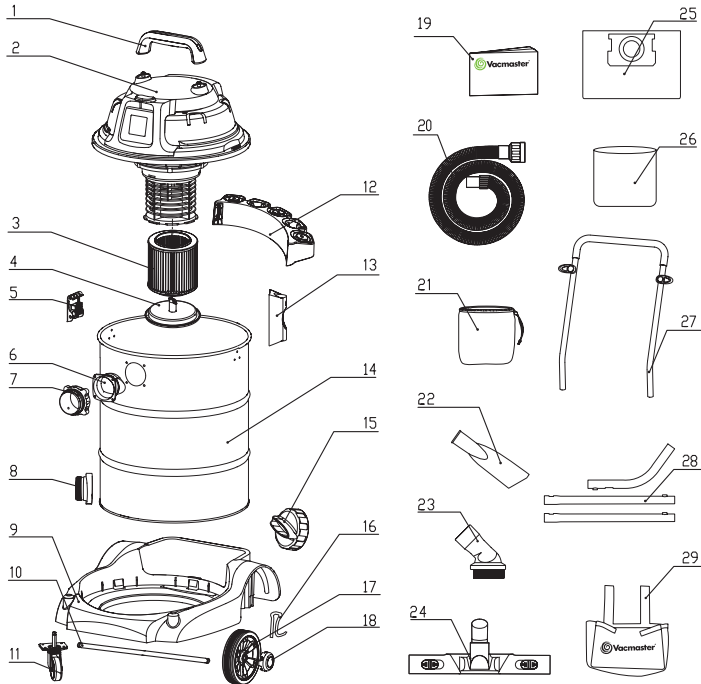
Installing Foam Sleeve Filter

1. Remove power head and place in upside down position. Follow instructions to remove cartridge filter.
2. Carefully slide foam sleeve filter down over the filter cage making sure the whole cage is covered. (fig.1 & 2)
3. Replace the power head on to the container.

Cleaning Foam Sleeve Filter

1. With the removed power head in the upside down position, carefully remove foam sleeve filter. (fig. 3)
2. Use a mild soap and water solution to wash foam sleeve filter and rinse with clean

PARTS LIST -EXPLODED VIEW



VK1650SWD Manual Parts List

Key Number	Drawing Number	Description	Quantity
1	VK01SR.10.05	Handle	1
2	VK01SR.10.00	Power Head Assembly	1
3	FV9563.02.00	Cartridge Filter	1
4	FV9546.01.20.01	Filter Retainer	1
5	TVQTDK.10.00	Latch Assembly	2
6	TVQTXK.05.01	Vacuum Port Deflector	1
7	TVQTXK.05.02	Vacuum Port Assembly	1
8	VF01SR.10.06	Drain Outlet Assembly	1
9	VJ40SR.20.01	Base	1
10	VJ40SR.00.01	Wheel Shaft	1
11	TVQTJL.21.00 /TVQTJL.20.00	Caster Foot	2
12	FV8201.04.01	Accessory Shelves	1
13	VJ71PW.00.02	Push Handle Base	1
14	VK01SR.20.25	Container	1
15	VB01PF.20.01	Drain Cap	1
16	BOD1ZZ.03.03	'R' Lock Pins	2
17	TVQTGL.13.00	Big Wheel	2
18	TVQTGL.13.03	Hub Caps	2
19		Operator's Manual	1
20	FV5801.01.00	Hose	1
21	FV9644.04.00	PRE Cloth Filter	1
22	FV5771.01.01	Crevice Car Nozzle	1
23	FV5773.01.00	Round Dust Brush	1
24	FV5703.00.00	Floor Brush / squeegee	1

25	FV9608.03.00	Dust Bag	1
26	F V9503.02.00	Foam Sleeve Filter	1
27	VJ40SR.30.00	Push Handle	1
28	FV5942.02.10 FV5942.02.20 FV5942.02.22	2 Coated Tube One Bended	3
29	FV9243.01.00.04	Accessory pouch	1



Declaration Of Conformity

We, Importer

Suzhou Cleva Electric Appliance Co., Ltd.

8#, Ting Rong Street,

Suzhou Industrial District

215122 Suzhou, Jiangsu Province

PEOPLE'S REPUBLIC OF CHINA

Declare that the product

VK1650SWD

Wet & Dry Vacuum Cleaner

Complies with the essential health and safety requirements of the following directives:

2004/108/EC - EMC Directive

2006/95/EC - Low Voltage Directive

2002/95/EC – ROHS Directive

2002/96/EC – WEEE Directive

Standards and technical specification referred to:

EN60335-1/A13:2008

EN60335-2-2/A2:2006

EN62233:2008

EN55014-1:2006

EN55014-2/A1:2001

EN61000-3-2:2006

EN61000-3-3:2005

Authorise Signatory

Date: 07/26/2010

A handwritten signature in black ink, appearing to read "Jim", is written over a faint, larger version of the same signature.

Signature:

Name: Will Zhou



(EC conformity Mark)

MADE IN P. R. C.

VK1650SWD 950091