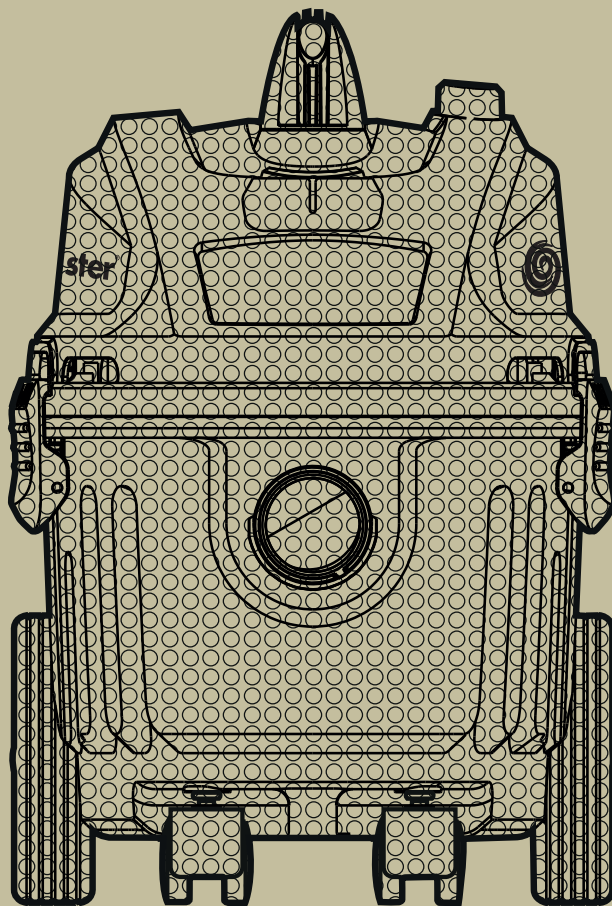




WET & DRY  
**VACUUM CLEANER**

**VF1515HJ**



**VF1515HJ / 1500W / 15L**

# T ABLE OF CONTENTS

SECTION	PAGE
Warranty	3
Safety Instructions and Warnings	3
Double insulation	4
Specifications	4
Unpacking and Checking Carton Contents	5
General Assembly Instructions	6
Dry Vacuum Operation	7
Wet Vacuum Operation	8
Maintenance	8
Installing & Cleaning Cartridge Filter	9
Installing & Cleaning Foam Sleeve Filter	9
Troubleshooting	10

**Thank you for purchasing this Vacmaster® wet and dry vacuum cleaner. Feel confident that with Vacmaster® you are obtaining a high quality product engineered for optimal performance. This vacuum cleaner is capable of picking up liquids and dry materials.**

**FOR YOUR SAFETY CAREFULLY READ AND UNDERSTAND ALL INSTRUCTIONS.**

## **WARRANTY**

Vacmaster® takes pride in producing a high quality, durable product. This Vacmaster® product carries a limited two (2) year warranty against defects in workmanship and materials from date of purchase under normal household use. Warranty does not apply to defects due to direct or indirect abuse, negligence, misuse, accidents, repairs or alterations and lack of maintenance. Please keep your receipt as proof of purchase.

## **SAFETY INSTRUCTIONS & WARNINGS**

- This appliance complies with the compulsory safety regulations for electric equipment. However, improper use can be harmful to people and property. Please read these operating instructions through carefully and completely before switching the appliance on. Keep the operating instructions, the receipt, as well as the packaging and packaging material if at all possible.
- Don't use the appliance outdoors (unless it has been specifically designed for use outdoors). Don't subject the appliance to heat, direct sunshine or very high moisture (e.g. rain). Never immerse the appliance in liquids and be aware of sharp edges that may damage it.
- The appliance is designed to vacuum up materials that are not hazardous to your health and that are not flammable.
- Never hold the connectors in front of your face (Especially your eyes, ears, etc.) Never direct the nozzle towards persons or animals.
- Only use the appliance for its designated purpose. Any other types of use are at your own risk and are possibly dangerous.
- Other uses and unattended operation are not allowed.
- The manufacturer cannot be held responsible for damages that are caused by improper use or incorrect operation.
- Make sure that the correct dust bag has been inserted securely in its holder before using the appliance. The wrong filter or dust bag or incorrectly installed filter or dust bag can cause damage to the appliance and cause the guarantee to become void.
- If the supply cord is damaged, it must be replaced by the manufacturer, a qualified service agent or similarly qualified persons in order to avoid a hazard.
- Do not vacuum up ashes, hot coals or the like, large fragments of glass and sharp objects.
- Don't vacuum up any toner dust, which is used in printers and copiers for example, because it is electrically conductive. In addition, it is possible that it will not be completely filtered out by the filter system of the wet and dry vacuum cleaner and can be released into the air via the exhaust fan.
- Never vacuum asbestos or asbestos dust.
- Never vacuum flammable or poisonous liquids like petrol, oil, acids, or other volatile substances.
- Don't vacuum up liquids that are hotter than 60°C or any poisonous or flammable dusts.
- Never lay the appliance on its side. Pay particular attention to a horizontal position and adequate stability on stairs.
- The plug must be removed from the socket-outlet before cleaning or maintaining the appliance.
- Only trained specialists may make repairs on electric equipment. Improper repairs could result in considerable danger to the user.
- Do not store the appliance directly beside a hot oven or radiator.
- Children, disabled persons, and the aged are often not aware of the dangers that can result from handling electric appliances. The above-mentioned persons and untrained persons must never work with this electrical appliance.
- When cleaning or removing the appliance, always switch it off. Pull the plug out of the socket, if you are not going to use the appliance for an extended period of time. Never pull on the cable to unplug the appliance, rather pull on the plug itself. Also, remove any special accessories from the appliance.
- Always keep the appliance clean. Don't use any solvents or cleaners that contain solvents for cleaning.
- Never leave the appliance switched on unattended. If you leave the work area, switch the appliance off or unplug it from the socket (don't pull the cord, but use the plug).
- In order to protect children from electric household appliances, make sure that the cable can't cause children to stumble and don't give children access to the appliance.
- Never use the appliance when you are under the influence of medication, alcohol or drugs, if you are currently under medical care, or if you are tired.
- Check the appliance and the power cord regularly for any possible damage. Don't use damaged appliances.

- Don't try to repair the appliance yourself. Always use a qualified technician for repairs. Always have faulty power cords replaced immediately by the manufacturer or a qualified electrician. Use the same type of cable in order to prevent any danger of electric shock and injury.
- Only use original spare parts and accessories.
- Frequently check that the float valve positioned underneath the motor is able to move freely.
- If you notice liquid leaking from your appliance, switch it off immediately and unplug it.
- Don't put the appliance in water. Make sure that water is not spilled on the appliance.
- When disposing of the wastewater, make sure that you observe any legal regulations.
- Only store the appliance in a safe and dry location outside the reach of children.
- Please also pay particular attention to the following "Special Safety Information".
- This appliance should not be used by persons under the age of 16 or by persons with reduced physical, sensory or mental capabilities, or lack of experience and knowledge, unless they have been given supervision or instruction concerning use of the appliance by a person responsible for their safety.
- Children should be supervised to ensure that they do not play with the appliance.
- For additional protection: It is recommended that this vacuum cleaner can be used in conjunction with residual current device (RCD) with a rated residual current of 30mA or less.

#### SPECIAL SAFETY INFORMATION

- Never vacuum up hot ashes or pointed or sharp objects.
- Never use the vacuum without some sort of filtration either a dry filter for dry vacuuming or a foam filter for wet vacuuming.
- When using the appliance, make sure that no hair or loose clothing can be drawn in.
- Keep the vacuum cleaner away from heat sources such as radiant heaters, ovens, and so on.

#### DISPOSAL INFORMATION

The appliance contains electric and electronic components and may not be disposed of as household garbage. The local and currently applicable legislation must be observed unconditionally.

## SPECIFICATIONS

Motor:	220-240V~50Hz
Container:	15L
Watt:	1500W
Filter-Dry:	PET Cartridge Filter & Dust Bag
Filter-Wet:	Foam Sleeve Filter
IPX4	

## DOUBLE INSULATION

This Wet and Dry Vacuum cleaner is double-insulated, eliminating the need for a separate grounding system. Use only identical replacements parts. Read the instructions for Servicing Double-Insulated Wet and Dry Vacuum cleaner before servicing. Use this Wet and Dry Vacuum cleaner as described in this manual. Observe the following warnings that appear on the motor housing of your Wet and Dry Vacuum cleaner.




**DOUBLE INSULATED - GROUNDING NOT REQUIRED - WHEN SERVICING USE ONLY IDENTICAL REPLACEMENT PARTS.**

**WARNING: TO REDUCE THE RISK OF ELECTRIC SHOCK-DO NOT EXPOSE TO RAIN. STORE INDOORS.**

**WARNING: FOR YOUR OWN SAFETY, READ AND UNDERSTAND OPERATOR'S MANUAL. DO NOT RUN UNATTENDED. DO NOT PICK UP HOT ASHES, COALS, TOXIC, FLAMMABLE OR OTHER HAZARDOUS MATERIALS, DO NOT USE AROUND EXPLOSIVE LIQUIDS OR VAPORS.**

## CAUTION:

- Do not vacuum drywall dust or fireplace soot or ash. This is a very fine dust which will not be captured by the filter and may cause damage to motor and void the warranty.

**WARNING: SERVICING OF DOUBLE-INSULATED WET AND DRY VACUUM CLEANER WITH A DOUBLE-INSULATED WET AND DRY VACUUM CLEANER, TWO SYSTEMS OF INSULATION ARE PROVIDED INSTEAD OF GROUNDING. NO GROUNDING MEANS IS PROVIDED ON A DOUBLE-INSULATED APPLIANCE, NOR SHOULD A MEANS FOR GROUNDING BE ADDED. SERVICING A DOUBLE INSULATED WET AND DRY VACUUM CLEANER REQUIRES EXTREME CARE AND KNOWLEDGE OF THE SYSTEM, AND SHOULD BE DONE ONLY BY QUALIFIED SERVICE PERSONNEL. REPLACEMENT PARTS FOR A DOUBLE-INSULATED WET AND DRY VACUUM CLEANER MUST BE IDENTICAL TO THE PARTS THEY REPLACE. YOUR DOUBLE-INSULATED WET AND DRY VACUUM CLEANER IS MARKED WITH THE WORDS 'DOUBLE INSULATED' AND THE SYMBOL  (SQUARE WITHIN A SQUARE) MAY ALSO BE MARKED ON THE APPLIANCE.**

- To reduce the risk of electric shock-unplug before cleaning or servicing.
- DO NOT use without filters in place.

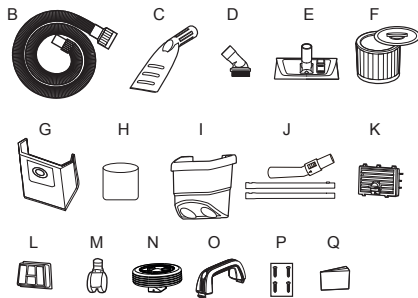
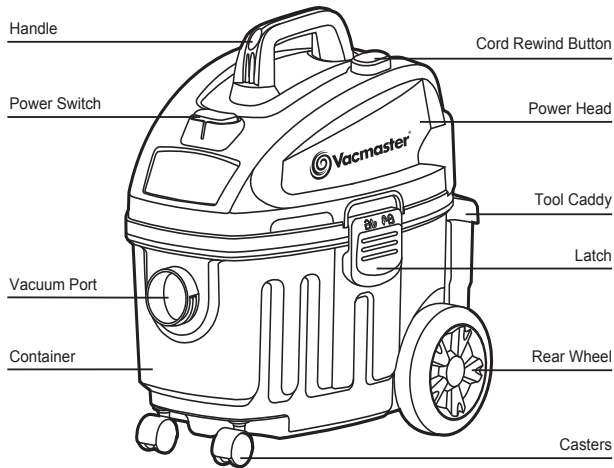
**CAUTION: TO REDUCE THE RISK OF INJURY FROM MOVING PARTS- UNPLUG BEFORE SERVICING.**

## UNPACKING AND CHECKING CARTON CONTENTS

Remove entire contents of carton. Check each item against the carton contents list.

### Carton Contents List

Key	Description	QTY
A	Vacuum Cleaner.....	1
B	Hose.....	1
C	Car Nozzle.....	1
D	Round Dust Brush.....	1
E	Floor Combo Nozzle.....	1
F	Cartridge Filter.....	1
G	Dust Bag.....	1
H	Foam Sleeve Filter.....	1
I	Rear Caddy.....	1
J	Extension Wand.....	3
K	HEPA Filter Door.....	1
L	HEPA Filter.....	1
M	Casters.....	2
N	Rear Wheels.....	2
O	Handle.....	1
P	Bag with 4 Screws.....	1
Q	Operator's Manual.....	1

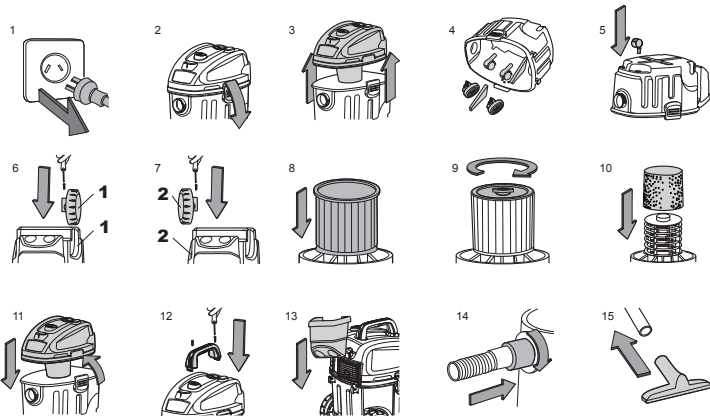


# GENERAL ASSEMBLY INSTRUCTIONS

**WARNING: DO NOT PLUG IN POWER CORD TO POWER SOCKET, MAKE SURE PLUG IS DISCONNECTED BEFORE ASSEMBLING THE WET AND DRY VACUUM CLEANER**

## UNPACKING YOUR WET AND DRY VACUUM CLEANER & GENERAL ASSEMBLY

1. Verify that the power cord is disconnected from the power socket. (fig. 1)
2. Undo the latches. (fig. 2)
3. Lift the power head off the container. (fig. 3)
4. Remove the contents from inside the container, make sure you have all contents as listed on page 5. (fig. 4)
5. Turn the container upside down and insert the two casters (2) into the slots on the front side of the container. Apply downward pressure until the casters snap into place. (fig. 5)
6. Slide the rear wheels into the slots making sure to match the wheel number to the corresponding number on the wheel slot and use screws to secure them. Do not over tighten the screw. (fig. 6 & 7)
7. Your vacuum cleaner comes ready for dry vacuum cleaning. If cartridge filter is not installed refer to page 9 for filter installation. (fig. 8 & 9)
8. For wet vacuum cleaning, install the supplied foam filter. (fig. 10) See page 9 for filter installation.
9. Place the power head back on the container, aligning the top section with the latches, and lock into place. (fig. 11)
10. Insert the handle into the slots located on the top of the power head and secure it with the screws provided. Do not over tighten the screw. (fig. 12)
11. Hang the tool caddy to the hooks on the rear of the vacuum cleaner. (fig. 13)
12. Secure the large end of the hose onto the vacuum port on the container and screw into place. (fig. 14)
13. Choose the desired accessories and extension wands and push onto the hose. (fig. 15)



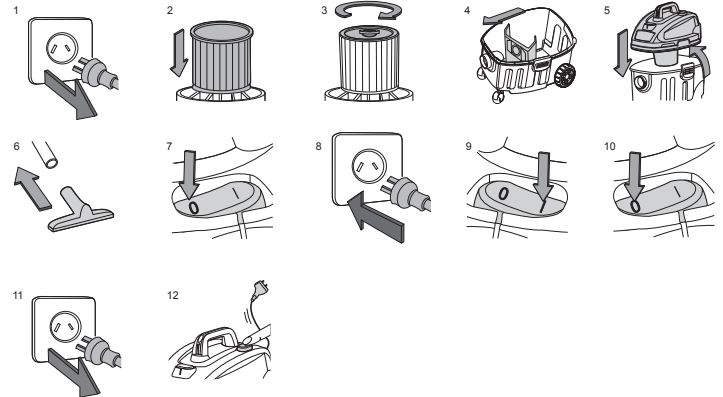
- Optional, for improved dust filtering, fit dust bag flange onto the inlet stub, taking care not to damage the bag. (fig. 4)
- Place the power head back on the container, aligning the top section with the latches, and lock into place. (fig. 5)

#### OPERATING INSTRUCTIONS: DRY VACUUMING

- Insert the locking end of the hose into the vacuum port on the power head and screw in place. Push the desired extension wands or attachments onto the free end of the hose. (fig. 6)
- Verify that the switch is in the 'O' OFF position before plugging the power cord into the power socket. (fig. 7 & 8)
- Turn the motor on by flipping the switch to the 'I' ON position. (fig. 9)
- Once you have completed vacuuming, flip the switch to the 'O' OFF position and unplug the power cord from the power socket. (fig. 10 & 11)
- To rewind the cord, hold on to the plug and press the cord rewind button. Do not allow plug to whip when rewinding. (fig. 12)

O = OFF      I = ON

#### DO NOT USE THE CARTRIDGE FILTER FOR LIQUID VACUUMING.



## 7 DRY-VACUUM OPERATION

**WARNING: BE SURE TO READ, UNDERSTAND, AND APPLY INFORMATION, ENTITLED 'SAFETY INSTRUCTIONS & WARNINGS'. DO NOT VACUUM IN AREAS WITH FLAMMABLE GASES, VAPORS, OR EXPLOSIVE DUSTS IN THE AIR. FLAMMABLE GASES OR VAPORS INCLUDE BUT ARE NOT LIMITED TO; LIGHTER FLUID, SOLVENT TYPE CLEANERS, OIL-BASE PAINTS, GASOLINE, ALCOHOL OR AEROSOL SPRAYS. EXPLOSIVE DUSTS INCLUDE BUT ARE NOT LIMITED TO; COAL, MAGNESIUM, GRAIN OR GUN POWDER. TO REDUCE THE RISK OF HEALTH HAZARDS FROM VAPORS OR DUST, DO NOT VACUUM TOXIC MATERIALS.**

- Verify that the power cord is disconnected from the power socket. (fig.1)
- In order to prepare your vacuum cleaner for dry vacuuming, verify that the cartridge filter is securely mounted. Make sure the filter is pushed in until it stops against the power head. (fig. 2) (Your WET AND DRY VACUUM CLEANER comes with the cartridge filter pre-installed, if not see page 9 for installation instructions.)
- Place filter retainer on top of cartridge filter and tighten by turning the retainer handle clockwise. (fig. 3)

# WET-VACUUM OPERATION

**WARNING: BE SURE TO READ, UNDERSTAND, AND APPLY INFORMATION, ENTITLED 'SAFETY INSTRUCTIONS & WARNINGS'. DO NOT VACUUM IN AREAS WITH FLAMMABLE GASES, VAPORS, OR EXPLOSIVE DUSTS IN THE AIR. FLAMMABLE GASES OR VAPORS INCLUDE BUT ARE NOT LIMITED TO; LIGHTER FLUID, SOLVENT TYPE CLEANERS, OIL-BASE PAINTS, GASOLINE, ALCOHOL OR AEROSOL SPRAYS. EXPLOSIVE DUSTS INCLUDE BUT ARE NOT LIMITED TO; COAL, MAGNESIUM, GRAIN OR GUN POWDER. TO REDUCE THE RISK OF HEALTH HAZARDS FROM VAPORS OR DUST, DO NOT VACUUM TOXIC MATERIALS.**

**WARNING: DO NOT PLUG IN POWER CORD TO POWER SOCKET, MAKE SURE PLUG IS DISCONNECTED BEFORE ASSEMBLING THE WET AND DRY VACUUM CLEANER**

1. Verify that the power cord is disconnected from the power socket. Verify that the container is clean and free of dust and dirt. (fig. 1)
2. Remove cartridge filter and the dust collection bag, then carefully install the foam sleeve filter over the filter cage and place the power head back on the container. (fig. 2) See filter installing instructions on page 9.

**DO NOT USE THE CARTRIDGE FILTER FOR LIQUID VACUUMING.**

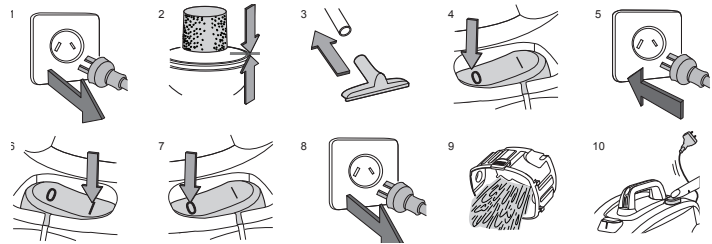
## OPERATING INSTRUCTIONS – WET VACUUMING

3. Fit the desired extension wands or nozzle to the vacuum hose. (fig. 3)
4. Verify that the switch is in the 'O' OFF position before plugging the power cord into the power socket. (fig. 4 & 5)
5. Turn the motor on by flipping the switch to the 'I' ON position. (fig. 6)
6. After use, flip the switch to the 'O' OFF position and unplug the power cord from the power socket. (fig. 7 & 8)
7. Empty the container into a suitable receptacle or drain. (fig. 9)
8. To rewind the cord, hold on to the plug and press the cord rewind button. Do not allow plug to whip when rewinding. (fig. 10)

**IMPORTANT! When vacuuming large quantities of liquids, do not immerse the nozzle completely in the liquid; leave a gap at the tip of the nozzle opening to**

allow air inflow. The machine is fitted with a float valve that stops the suction action when the container reaches its maximum capacity. You will notice an increase in motor noise. When this happens, turn off the machine, disconnect from power supply, and drain the liquid into a suitable receptacle or drain. To continue vacuuming, refit the container with power head. After wet vacuuming, turn the machine off and remove plug from power supply. Empty the container, clean and dry the inside and outside before storage.

**REMEMBER! The foam filter must be removed after wet vacuuming, and a cartridge filter must be installed before dry vacuuming again.**



# MAINTENANCE

1. Verify that the power cord is disconnected from the power socket. (fig.1)
2. Disconnect the hose from the vacuum cleaner. (fig. 2)
3. Undo the latches and remove the power head from the container. (fig. 3)
4. Clear all dirt or debris from the container and hose. (fig. 4)
5. Clean the foam filter by washing it with water and mild soap. (fig. 5)
6. Check the hose, attachments, and power cord to verify that they have not been damaged.

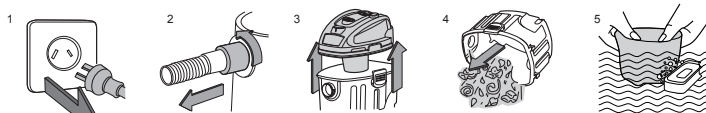
**IMPORTANT! Clean or change the cartridge filter regularly for best performance. ALWAYS USE CARTRIDGE FILTER FOR DRY VACUUMING. If the machine is used without the cartridge filter, the motor will burn out and the warranty will be voided. Always keep spare filters on hand.**

**NOTICE! The filters included are made of high quality materials designed to stop small dust particles. The cartridge filter should be used for dry pick-up**



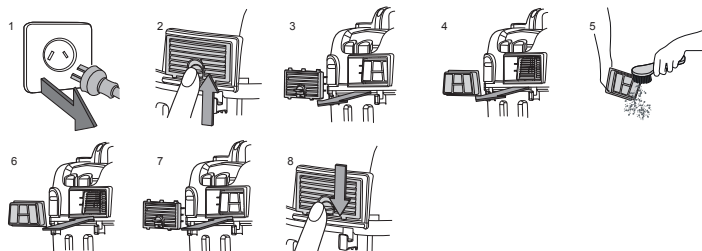
only. A dry cartridge filter is necessary to pick up dust. If the cartridge filter is wet, it will clog quickly and be very difficult to clean. Handle the filter carefully when removing it for cleaning and replacing it. Check the filters for tears or small holes, a small hole can let dust pass through and out of the cleaner. Do not use a filter with holes or tears in it; replace it immediately.

**WARNING! ALWAYS DISCONNECT THE PLUG FROM THE POWER SOCKET BEFORE REMOVING THE POWER HEAD FROM THE CONTAINER.**



### Installing and Cleaning HEPA Filter

1. Verify that the power cord is disconnected from the power socket. (fig.1)
2. Unlock the filter door by lifting the lock tab UP to the unlocked position and pull the door out. (fig. 2 & 3)
3. Remove the HEPA filter cartridge from the vacuum cleaner. (fig.4)
4. Clean filter by brushing dirt off. For optimal performance a new filter is recommended. (fig.5)
5. Install the cleaned or new filter into place. (fig. 6)
6. Insert the filter door tabs into the upper slots and lock the filter door into place. (fig. 7 & 8)



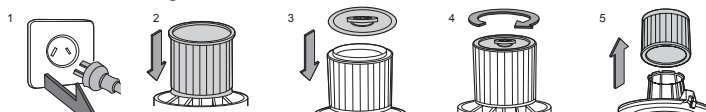
## INSTALLING & CLEANING FILTERS

### Installing Cartridge Filter

1. Verify that the power cord is disconnected from the power socket. (fig. 1)
2. Remove power head and place in upside down position.
3. Install the cartridge filter over the filter cage and carefully push filter in until it stops against the power head. (fig.2)
4. Place filter retainer on top of cartridge filter and tighten down by turning retainer clockwise. (fig. 3 & 4)

### Removing and Cleaning Cartridge Filter

1. Unlock and remove the filter retainer by turning retainer handle counter clockwise.
2. Carefully hold and pull the cartridge filter up for removal. (fig.5)
3. Clean the cartridge filter by gently tapping or brushing dirt off. Cleaning should not be done indoors in living areas. For optimal performance a new filter is recommended.
4. Install cleaned or new filter into place as instructed above in steps 1 - 3 of Installing Cartridge Filter.
5. Wet filters should be removed and allowed to air dry for 24 hours before installing onto the filter cage.



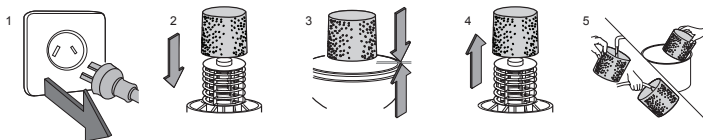
## INSTALLING & CLEANING FOAM SLEEVE FILTER

### Installing Foam Sleeve Filter

1. Verify that the power cord is disconnected from the power socket. (fig. 1)
2. Remove power head and place in upside down position. Follow instructions to remove cartridge filter.
3. Carefully slide foam sleeve filter down over the filter cage making sure the whole cage is covered. (fig. 2 & 3)
4. Replace the power head onto the container.

### Cleaning Foam Sleeve Filter

1. With the removed power head in the upside down position, carefully remove foam sleeve filter. (fig. 4)
2. Use a mild soap and water solution to wash foam sleeve filter and rinse with clean water. (fig. 5)
3. Allow filter to air dry before installing and using again.



## TROUBLESHOOTING

Symptom	Possible Causes	Corrective Action
Vacuum cleaner will not operate	1) No power supply.	1) Check power supply – cord, breakers, fuses.
	2) Faulty power cord.	2) Unplug and check the power cord. If damaged, have it repaired by a professional.
	3) Container full.	3) Empty container.
Dust comes out from motor cover.	1) The cartridge filter is missing or damaged.	1) Attach or replace cartridge filter.
Reduced efficiency and motor/speed vibration.	1) There is a blockage in the nozzle, hose, or the container inlet. The cartridge filter is clogged by fine dust.	1) Check nozzle, hose and container inlets for blockage. Take off the filter and clean it. Or install a new cartridge filter.

**MADE IN P. R. C.**

**VF1515HJ**