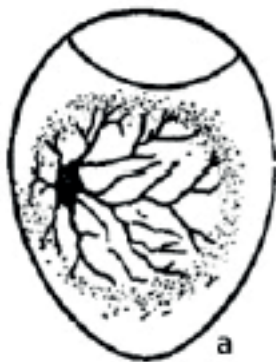


Quick Start Guide: Orbit Range

STEPS TO FOLLOW:

1. The Incubator should be placed in a well-ventilated room away from direct sunlight. The temperature in this room should be between 22 and 33°C with no big temperature fluctuations.
2. Turn on the incubator. Keep it in its polystyrene housing.
3. Make sure the egg turner gear is connected to the turning plate. Test the egg turner by pressing the + (plus) button.
4. We recommend starting with one water station connected to one of the large water trays. If you are in a particularly dry area, you can also add a station to small tray.
5. After 6 hours of running, you are ready to start incubating. Set the eggs. It will take a couple of hours to get all the eggs up to temperature.
6. Make sure your water stations stay topped up. Normally they need a top up every 2 to 3 days.
7. Candle eggs on day 10 and get rid of infertile eggs.



a) Fertilized egg



b) Infertile egg



c) Dead embryo

8. Candle eggs again on day 18. Remove the egg rollers and lay the eggs down on the grid. Lockdown is now in progress.
9. Fill all water trays and keep them full for the entire lockdown period. This is very important to ensure that the eggshells are soft enough for the chicks to break through. In case of very thick shells and/or in dry areas it is recommended to spray the eggs with a very fine mist twice a day during this period. Do not open the incubator frequently when the chicks start to hatch. If you do, the loss of humidity will cause the eggshells of the unhatched eggs to dry out and they won't be able to break through the egg.
10. It is not unheard of for chicks to hatch on day 22 or 23, so keep the incubator running.
11. Once you are certain that all eggs have hatched, remove chicks from incubator and wash it thoroughly. Do not store incubator when there is any water or moisture present. It needs to be completely dry.
12. After washing your incubator, you are ready for your next batch.

For more information: Please contact info@deltaincubators.co.za

We also have a WhatsApp support line: 0817997620