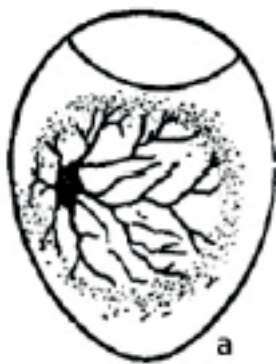


Quick Start Guide: Platinum Incubator Range

STEPS TO FOLLOW:

1. The Incubator should be placed in a well-ventilated room away from direct sunlight. The temperature in this room should be between 22 and 33°C with no big temperature fluctuations.
2. Assemble the water pump as described in the manual. Turn on the incubator.
3. Make sure the egg turner gear is connected to the turning plate. Test the egg turner by pressing and holding the + (Plus) button for 3 seconds.
4. Set the humidity to 55% and fill up the water bottle. Please note that the humidity pump will take some time(60min) to get the pump primed and pumping into the machine. It is a very slow process; you need to be patient. After a couple of hours everything should stabilize.
Day 1-18: 55%
Day 19-21: 70%
5. After 12 hours of running, you are ready to start incubating. Set the eggs. It will take a couple of hours to get all the eggs up to temperature.
6. Check on the incubator twice a day and make sure that the water bottle is full.
7. Candle eggs on day 10 and get rid of infertile eggs.



a) Fertilized egg



b) Infertile egg



c) Dead embryo

8. Candle eggs again on day 18. Remove the egg turning tray and lay the eggs down on the grid.
9. Close the vent to increase the humidity set point to above 70%. If the humidity pump does not pump fast enough to get the humidity above 65% add water to the bottom of the machine. The high humidity is very important to ensure that the eggshells are soft enough for the chicks to break through. In case of very thick shells and/or in dry areas it is recommended to spray the eggs with a very fine mist twice a day during this period.

Do not open the incubator frequently when the chicks start to hatch. If you do, the loss of humidity will cause the eggshells of the unhatched eggs to dry out and they won't be able to break through the egg.

10. It is not unheard of for chicks to hatch on day 22 or 23, so keep the incubator running.
11. Once you are certain that all eggs have hatched, remove chicks from incubator and wash it thoroughly. Do not store incubator when there is any water or moisture present. It needs to be completely dry.
12. After washing your incubator, you are ready for your next batch.

For more information: Please contact info@deltaincubators.co.za

Visit our Youtube Channel (Delta Incubators) for a "How-To" video.