



INSTALLATION INSTRUCTIONS

2014-2018 CHEVY/GMC

WARNING

Failure to properly secure cargo or hauling inappropriate cargo may result in property damage, serious bodily injury, or death.

DANGER

Failure to follow the safety notices in this manual may result in property damage, serious bodily injury, or death.

Watch short installation videos at www.elongator.com/video

TOOLS REQUIRED

-  • 1/4" Allen wrench. (for Tailgate extension)
-  • 1/2 " or 13MM. Socket or open-end wrench. (for gate cable bolt)
-  • 9/16" Open-end wrench. (for Tailgate extension)
-  • Pry bar or screwdriver.
-  • A friend to help you.
-  • A place to set the original tailgate aside after you remove it.
-  • Grease

 **DANGER**

Failure to follow the safety notices in this manual may result in property damage, serious bodily injury, or death.

STEP 1: DISCONNECT CAMERA/LOCK WIRING CONNECTOR (IF APPLICABLE)

Trace the wiring harness from your tailgate to find the appropriate connector.

To release:

1. Slide red tab back.
2. Hold down the black “bridge” piece that crosses the red tab.
3. Pull the connector apart.



STEP 2: DISCONNECT THE TAILGATE SUPPORT CABLES

TOOLS REQUIRED:



- Remove DRIVER SIDE and PASSENGER SIDE cables from latch.
- Let cables hang off the truck.
- Set bolts aside for the new install.



STEP 3: REMOVE THE EXISTING TAILGATE (PASSENGER SIDE)



The connector on the tailgate sits on a rotating pin.

- Lower gate about 1/4 of the way.
- Look for the flat spots on the top and bottom of the connector. They line up with the opening on the hinge pin assembly.
- Line up the connector point on the tailgate with the opening in the hinge pin assembly.
- Pull gate up and out.



Rotating pin (with gate removed). Note how the pin is lined up with the opening in the hinge pin assembly.



Move gate up and down to find proper orientation.



Pull gate up and out.

STEP 3: REMOVE THE EXISTING TAILGATE (DRIVERS SIDE)

TOOLS REQUIRED:



- Pull drivers side connector off hinge. You may need to use a pry tool to force it off.



- Pull the disconnected wiring harness from the middle of the truck.



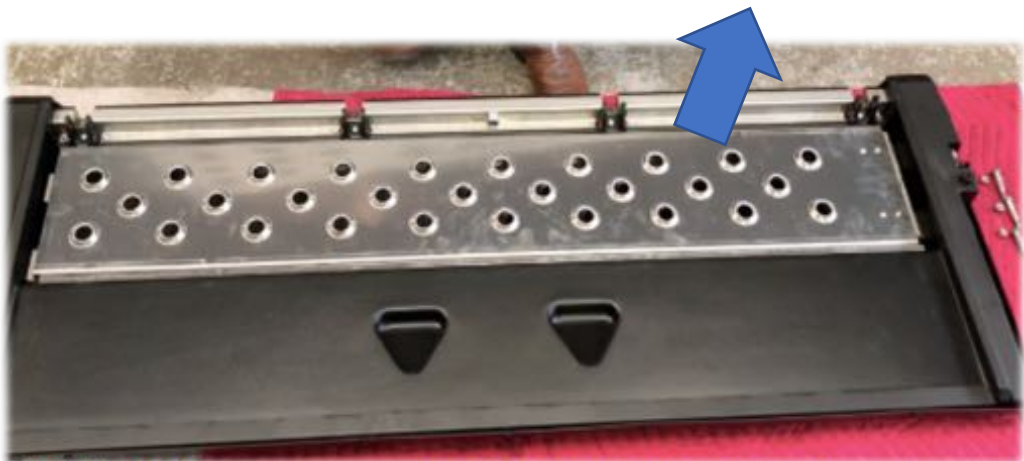
- Remove the existing tailgate.

STEP 4: PREP THE ELONGATOR TAILGATE

TOOLS REQUIRED:



- Remove the extension and ramps from the Elongator Tailgate.



STEP 5: PREPARE THE TRUCK HINGE PINS

TOOLS REQUIRED:



- Make sure PASSENGER SIDE pin is lined up with the slot.

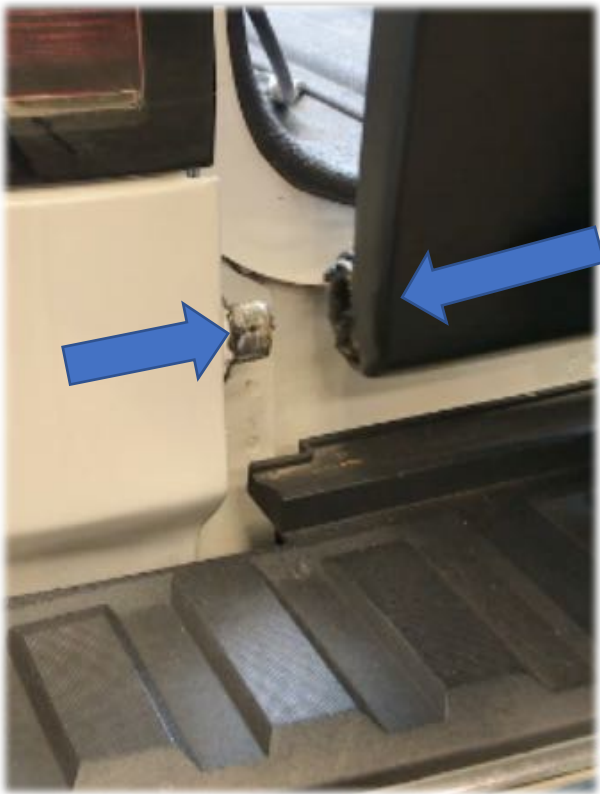


NOTE: Adding grease to each hinge pin makes tailgate re-attachment easier.

STEP 6: INSTALL THE ELONGATOR TAILGATE

DRIVERS SIDE FIRST

- **With tailgate slightly lowered from the closed position, slide attachment barrel onto the DRIVER'S SIDE pin.**



- **Feed the wiring harness through the middle of the truck. (if applicable)**



STEP 6: INSTALL THE ELONGATOR TAILGATE

PASSENGER SIDE

- **Install PASSENGER SIDE by lining up tailgate connector with hinge PIN.**
 - *NOTE: This pin ROTATES. MAKE SURE IT IS LINED UP BEFORE YOU ATTEMPT TO INSTALL THE TAILGATE (Blue arrow)*
- **Slide the Elongator Tailgate connector onto the PIN.**



STEP 7: RECONNECT TAILGATE SUPPORT CABLES, STORE RAMPS, AND ATTACH EXTENSION

TOOLS REQUIRED:



- **Attach PASSENGER SIDE and DRIVERS SIDE cables to Elongator Tailgate.**



- **DO NOT over-tighten the eyelets. They need to have a bit of slop so the eyelet can rotate around the bolt. This allows the cable to bend properly when the tailgate is opening/closing.**



PRO TIP: Place a rag in the tailgate under the attachment point. If you drop the bolt it will not disappear into the abyss.

STEP 7: (CONTINUED) STORE RAMPS, AND ATTACH EXTENSION

- Nest ramps together in the ramp box.
- Install the first one upside down.
- Place the second ramp on top of the first ramp.



NOTE: The tabs on the ramps should be on opposite sides when nested. For example: When the bottom ramp tabs face left and top ramp tabs should face right.

*First
ramp in:
Upside
down and
tabs on
left.*

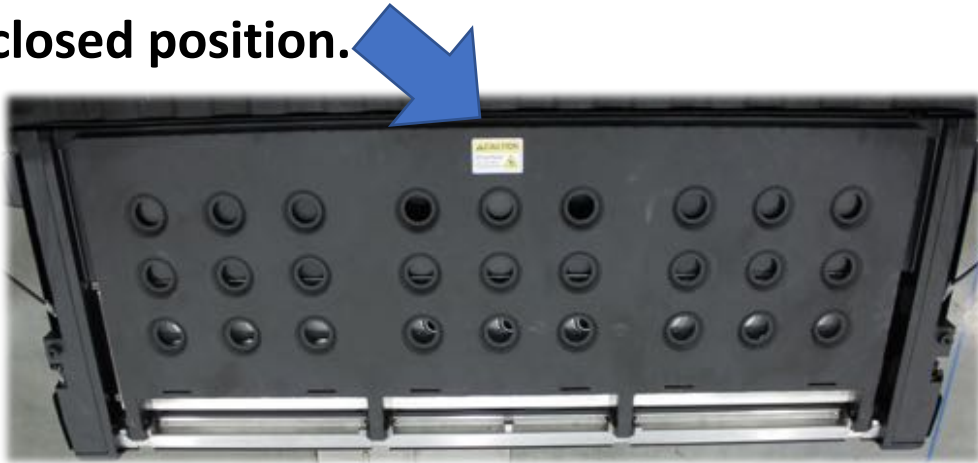


*Second
ramp in:
Topside up
and tabs
on right.*

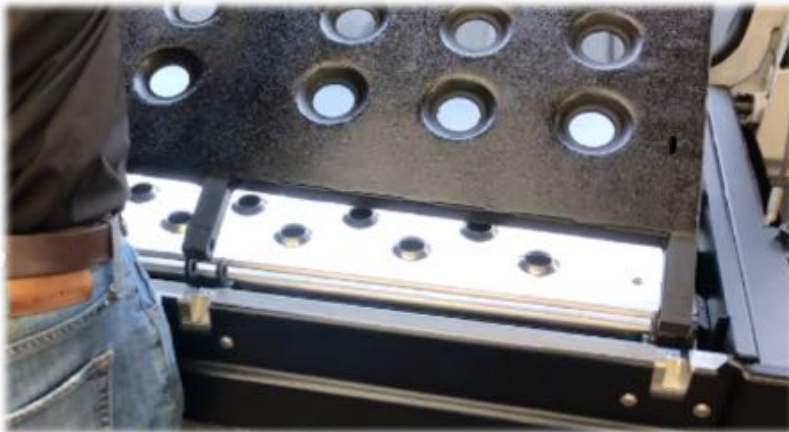


STEP 7: (CONTINUED) ATTACH EXTENSION

- Place extension in the closed position on top of the Elongator Tailgate.
- Make sure the yellow “pinch point” caution label is visible. This label shows when the extension is in the closed position.



- Line up the holes in the extension arms with the holes in the attachment points.



STEP 7: (CONTINUED) ATTACH EXTENSION

TOOLS REQUIRED:



- Re-attach all four (4) extension bolts and nuts.
- The outer connectors should face with the nut towards the outside of the gate.



Pro Tip: For the outer connectors use the Allen wrench and open end wrench. For the two inner connectors you can use the Allen wrench and the socket wrench.



DRIVERS side outer connector

PASSENGER side outer connector

STEP 8: CONNECT WIRING HARNESS (IF APPLICABLE)

- Pull the new wiring harness down to the factory wiring.
- Plug the connector in.
- Slide the red connector in to lock the assembly.
- Tidy up your wiring. Use cable ties if necessary.

