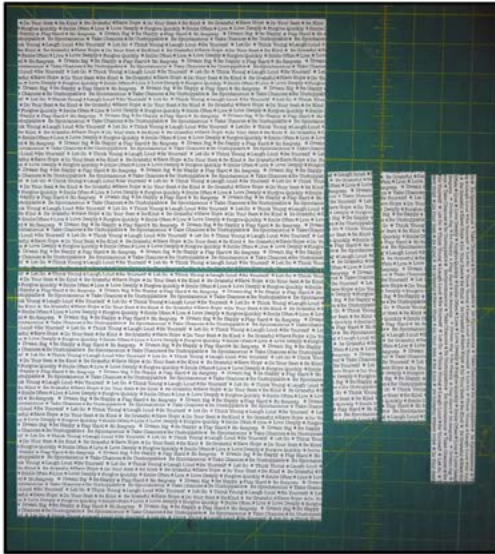
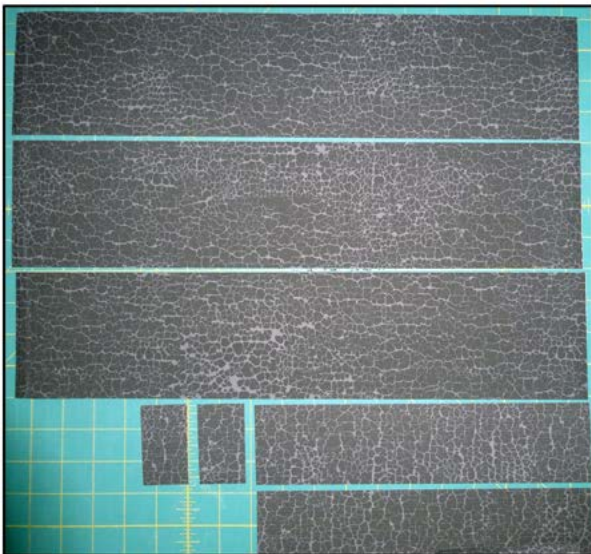


Cross Pocket Back Picture Tutorial

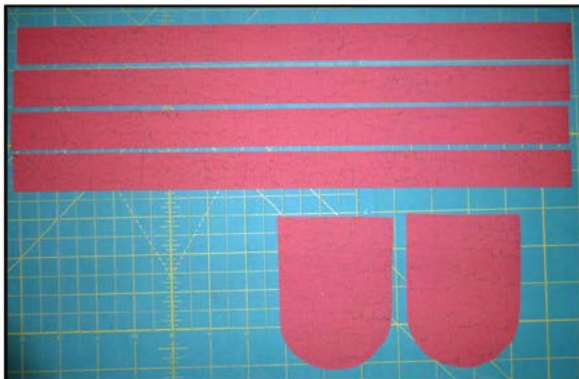
Cut the Fabrics



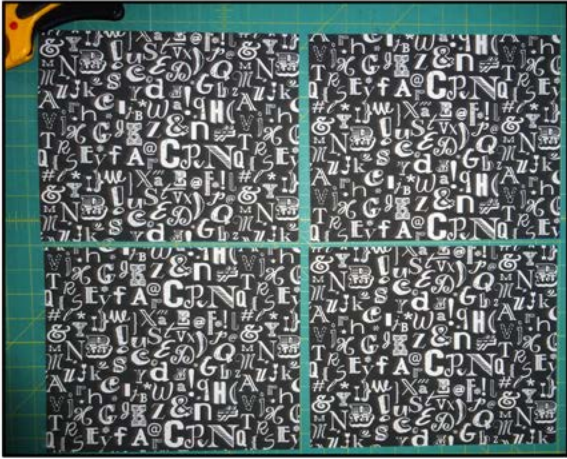
Cut the bag body pieces from
Main Fabric fat quarter



Cut the Handle and
Upper Band pieces from
Accent Fabric 1
fat quarter



Cut Pocket Accent
Strips and Tab from
Accent Fabric 2
(fat quarter or 1/8 yd)



Cut 4 Pocket Pieces
From Pocket Fabric
Fat Quarter



Cut the lining
pieces 2 lining,
2 pockets



Cut the interfacing

Iron interfacing on corresponding Main and Accent fabric pieces



Iron interfacing on wrong side of corresponding fabrics.
** Pocket pieces are do not have interfacing.

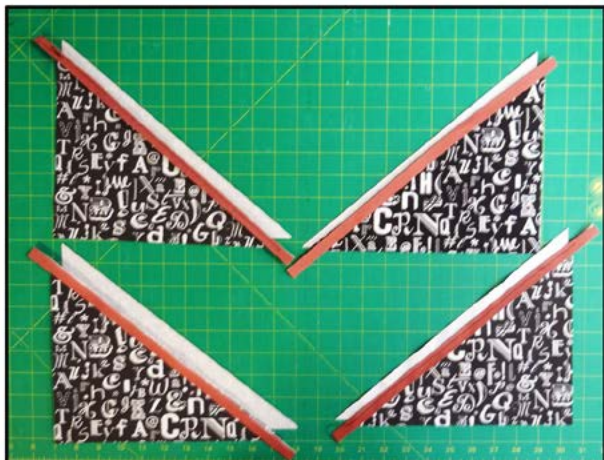
Sew the Outside Pockets



Cut pocket fabric on diagonal. Cut 2 on diagonal left to right. Cut 2 on diagonal right to left

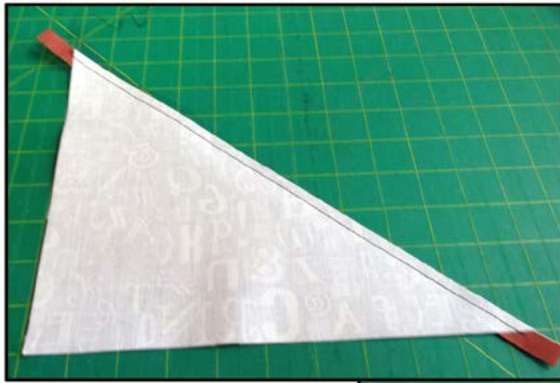


Fold accent strip in half, wrong sides together. There will be 4 of these strips.

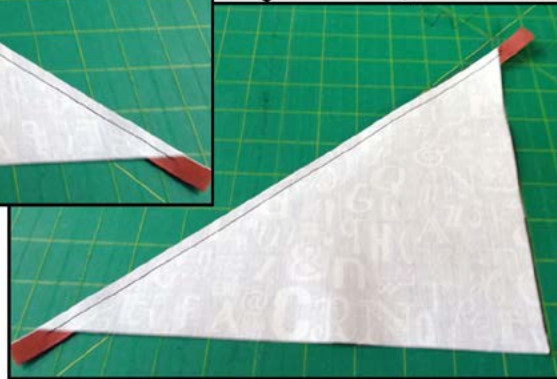


Organize pocket fabric. Layer accent strip on pockets. Layer pocket pieces wrong sides together. This is helpful for one way fabrics and to get the correct pocket pieces together before sewing

Sew the Outside Pockets - continued



Sew pocket pieces
right sides together.
Sew on diagonal.



Sew 2 left to right
Sew 2 right to left



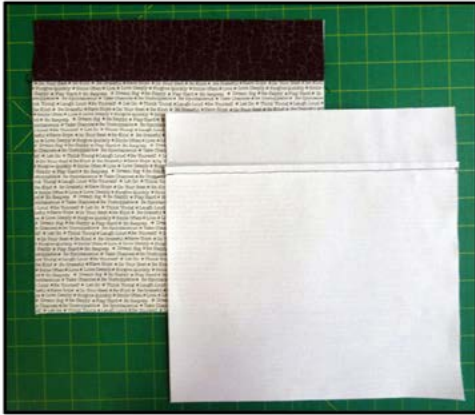
Open Pocket

Flip pocket fabric, wrong sides together



Sew four
pockets

Sew the Bag Body



Sew accent fabric to main fabric pieces. Sew two. These are the front and back pieces

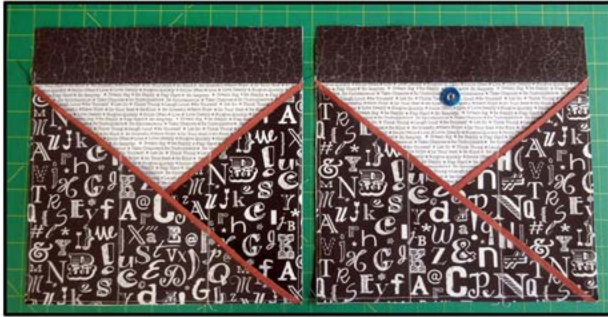


Sew accent fabric to narrow main fabric pieces. Sew two sets. Press seam down. These are side pieces.



Layer pockets on bag pieces

Sew the Bag Body - Continued



Mark vertical pocket lines.
Sew in place.
Apply Snap to one bag piece. This becomes the bag front.

Assemble the Bag Shell



Sew side pieces to bag front.

Press sides out.
Press seams toward sides.



Sew bottom piece to bag front.

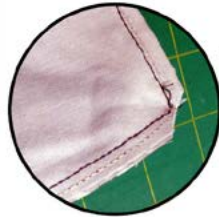
Press seam towards bottom.



Assemble the Bag Shell - Continued



Sew back to sides and bottom



Trim corners



Turn bag right sides out.

Sew the Tab



Apply Snap to one tab piece.

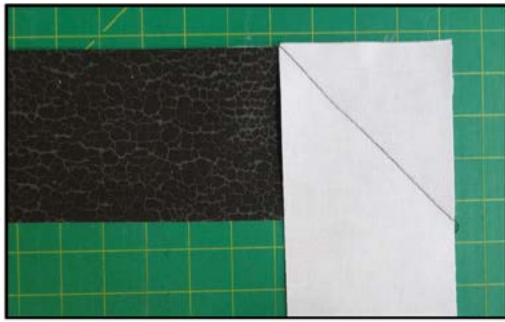


Turn right sides out. Topstitch.



Sew tab to bag back.

Sew the Handle



Layer handle pieces right sides together.
Sew on diagonal.
Trim excess fabric $1/4$ " from seam. Press seam open



Fold handle in half along the long side, wrong sides together.



Fold edge of handle to center crease.



Fold opposite edge to center crease



Refold handle, folded edges together.



Sew on folded edge.



Sew on opposite side.



Sew additional seams.

Sew the Handle - Continued



Sew handle to bag sides.
Line up raw edges of handle to
top of bag.

Sew the Lining & Inside Pockets



Fold Pocket Fabric
in half

Fold the 10" x 11 1/2" in half.

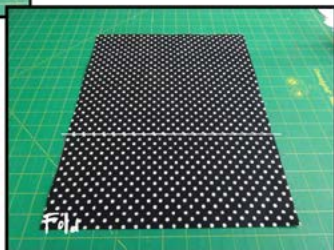


Draw pocket line on lining fabric.

Draw a horizontal line on lining fabric



Layer pocket on drawn line. Raw edge
lines up with drawn line.
Folded edge points down.
Sew 1/4" from raw edge.



Sew the Lining & Inside Pockets - Continued



Flip pocket up, Sew at sides.

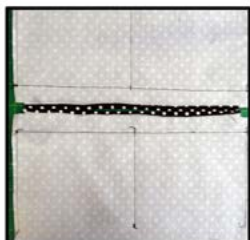


Sew a vertical line to form a pocket

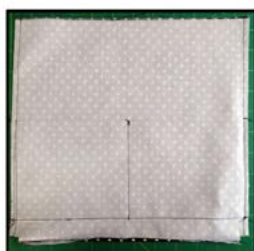
Cut 1/2" notch in bottom corners.



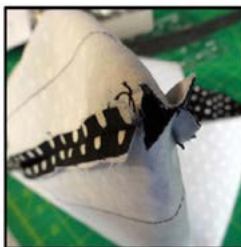
Layer lining pieces right sides together. Sew bottom leaving a 5" opening.



Press bottom seam open.



Sew lining at sides.



Match Side Seam with bottom seam



Press Side Seams open.



Sew across bottom corner. Sew both corners to create a box bottom.

Sew the Lining & Inside Pockets - Continued



Tuck bag into lining. Pull handle through opening in lining.



Sew around top opening.



Turn bag right sides out through opening in lining.



Tuck lining into bag body.



Sew around top.

Sew a fun button and you're Done!