

slackers®

EXTREME OUTDOOR ADVENTURES

SLA.880
Zip Quick Installation Kit

ITEMS REQUIRED

(NOT INCLUDED):

- (1) Step Ladder
- (1) Pair of safety glasses
- (1) Pair of work gloves
- (1) 30.5 m tape measure
- (1-2) Helpers with brooms

KIT CONTAINS:

- (1) 12' x 2" Main line
- (1) 6' x 2" Ratchet line
- (1) 12' x 1" Backup line
- (1) 6' x 1" Backup ratchet line
- (2) Mesh Sleeves
- (1) Tree hugger



BE SAFE! ALWAYS FOLLOW THESE RULES:

WARNING:

- **For domestic, outdoor use only.**
- **To be used under the direct supervision of an adult.**
- **WARNING! Maximum user weight 90 kg.**
- **To be setup and installed only by an adult.**
- This zipline is designed for children to ride a few feet off ground.
- Wear suitable shoes and close fitting clothing. No jewelry, scarves or other loose clothing.
- Make sure everything is installed correctly. Inspect and test the line before each use
- If worn or damaged parts are found, replacement parts – **DO NOT** substitute with other, non-Slacker's parts or failure resulting in injury may result.
- Remain seated for the entire ride, wait until you have stopped **COMPLETELY** before letting go of the trolley or dismounting seat. One zipline rider only at a time. Keep people and animals at least 7.5 m away from the zipline course.
- Never use the line when it is wet or if there is rain or lightning in the area.
- Do not place fingers or hair inside of trolley or serious injury may result.
- Do not reach up to grab cable while riding or as a spectator to slow down rider or serious injury may result.



WARNING!

FOR DOMESTIC USE ONLY! FOR OUTDOOR USE ONLY!



WARNING! ADULT SUPERVISION REQUIRED! SERIOUS INJURY OR DEATH MAY RESULT - Always exercise extreme caution when using the zipline. This product should be unpacked and assembled by an adult, including site and tree selection as well as secure cable attachment



WARNING!

MAX USER WEIGHT
200 LBS (90 KG)



WARNING! ADULT STRESS TEST REQUIRED
- This product should be tested using 250 lbs (113 kg) at 5 ft. (150 cm) from each end at the start and finish points.



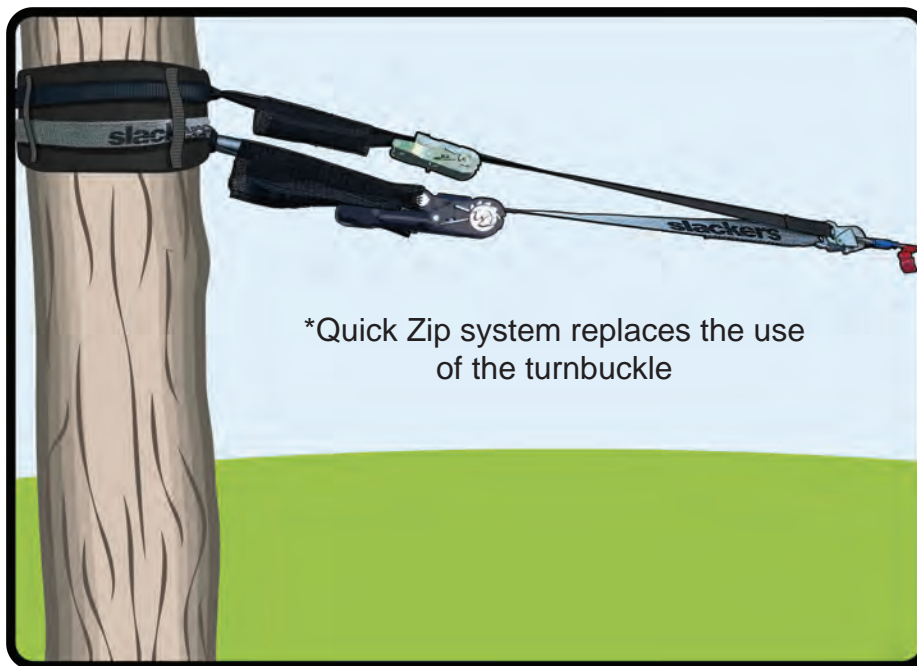
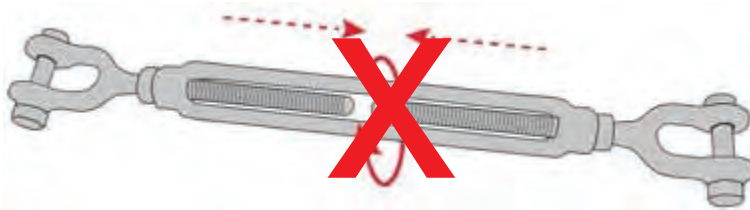
WARNING! MAINTENANCE REQUIREMENT - This product has parts that can wear or loosen during use. Inspect and tighten all hardware. Replace your cable after one year of use.

slackers®

EXTREME OUTDOOR ADVENTURES

ZIPLINE COURSE SET UP

- PRIOR TO INSTALLING YOUR ZIPLINE PLEASE READ CAREFULLY AND FOLLOW ALL WARNINGS AND INSTRUCTIONS INCLUDED WITH YOUR ZIPLINE KIT.
- Please note that if your zipline kit includes a turnbuckle you will use the Zip Quick Installation Kit in place of the turnbuckle during installation.



WARNING!
UNHEALTHY TREE
HAZARD - Do not attach to or use a tree that is diseased, unhealthy, or damaged. It may fail, causing serious injury or death

38" +



slackers®

EXTREME OUTDOOR ADVENTURES

INSTALL OVERVIEW DIAGRAM



STEP 1 - INSTALL THE ZIP QUICK RATCHET SYSTEM

- Start by wrapping the tree hugger around the tree at the end point height of 78 in. as specified in your zipline set up instructions (download PDF at b4Adventure.com) (figure 1).
- Place the mesh sleeve over the looped end of the main ratchet line and slide down to end near the ratchet (figure 2). Small mesh sleeves are to be used with the 1" backup line, and larger sleeve should be used with the 2" main line.
- Slide the looped end of the main ratchet line into the loops of the tree hugger, then feed the ratchet through the looped end and pull tight around the tree (figure 3).
- Repeat this process with the backup ratchet line. Backup line should be slightly above the main ratchet line (figure 4).



Figure 1



Figure 2



Figure 3



Figure 4

- Clip the main line hook onto the looped end of your zipline cable (figure 5)
- Make sure that the ratchet is positioned so that the handle is facing down and the ratchet is fully open (open slot on axle should be facing up). Then, open the ratchet and feed the main line through the top (figure 6) and crank the ratchet back and forth a few times so the main line is locked in place while you set up the other end of the zipline (figure 7).

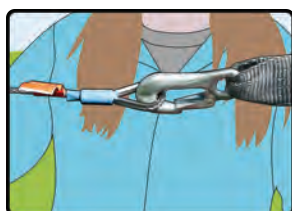


Figure 5



Figure 6



Figure 7

slackers®

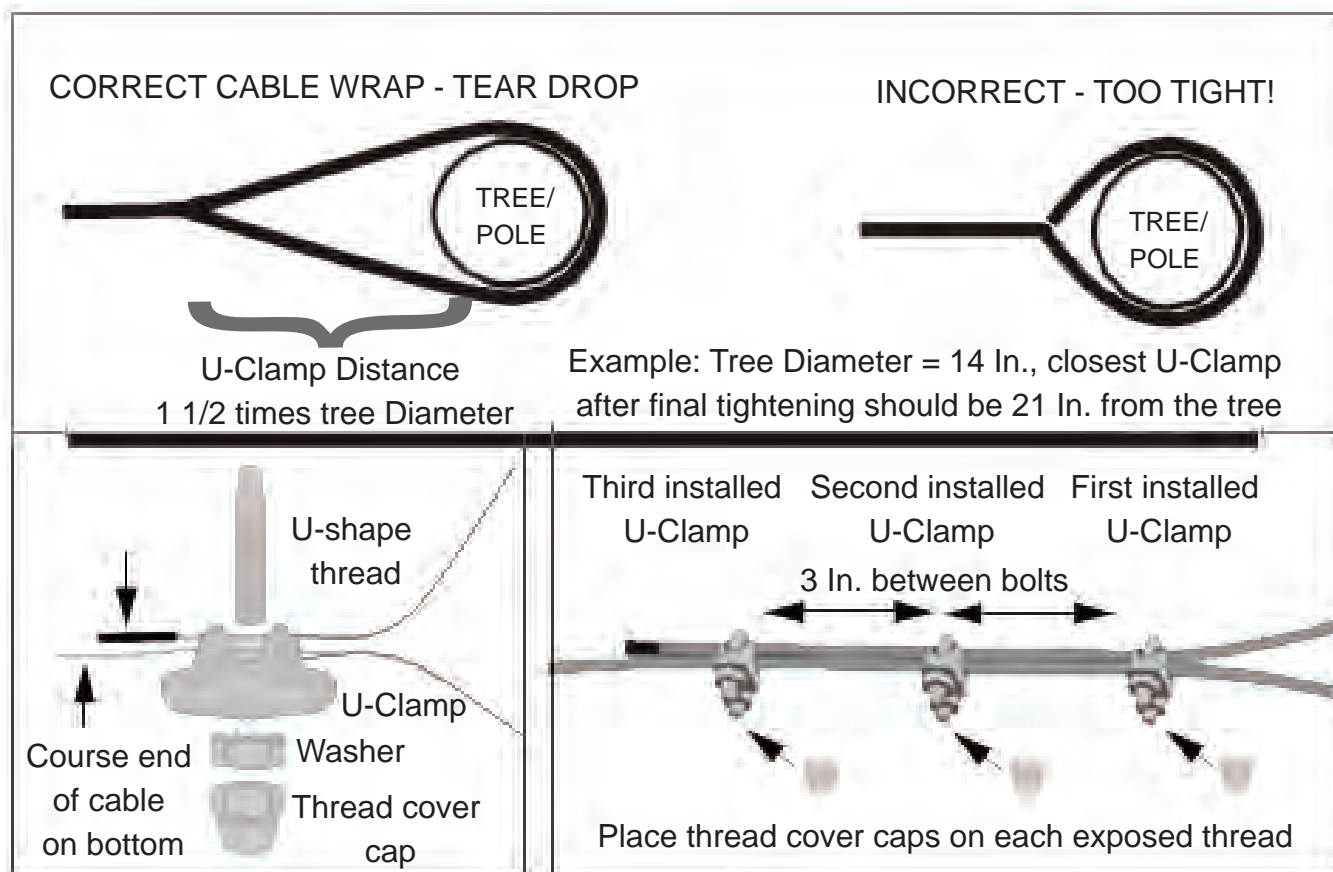
EXTREME OUTDOOR ADVENTURES

STEP 2 - TROLLEY & BRAKE INSTALLATION

- Before setting up the start point of your line you'll need to install your trolley and spring brake (included in select zipline kits only, or available for purchase at b4adventure.com)
- Thread the blunt, unlooped end of the line through the spring brake (optional). Slide the brake down to the end point.
- Thread the blunt, unlooped end of the line through the opening of the trolley. Slide the trolley down to the middle of the line

STEP 3 - U-CLAMP INSTALLATION

- U-Clamp installation - Have your helper(s) use their broom(s) to lift and support the trolley and cable while you perform the installation. This will help you pull out the slack and attach your U-Clamps. when you wrap your zipline around the start point tree, you want to form a "tear drop" shape wrapped around the tree. **DO NOT TIGHTEN UP AGAINST THE TREE!**
- With two helpers supporting the trolley and cable, **pull the wrapped cable as tight as you can with your hands**. While holding tight with one hand attach the first U-Clamp and tighten slightly 60 cm from tree.
- Repeat the above until you removed as much slack by hand as possible. Then tighten the first U-Clamp to 40 Nm of torque, or as snug as you can with hand tools. **DO NOT OVER-TIGHTEN.**
- Tidy up your excess cable by simply coiling it up and securing and covering the coil with duct tape.



slackers®

EXTREME OUTDOOR ADVENTURES

STEP 4 - TIGHTEN YOUR ZIPLINE

- Return to the Quick Zip ratchet system at the end point.
- If your line is not very tight, release the ratchet by pulling up on the vinyl coated gate inside the handle. EXPECT A “POP”
- Make sure that the ratchet is positioned so that the handle is facing down and the ratchet is fully open (open slot on axle should be facing up). Then, feed the end of the main line through the top of the ratchet
- Taking up as much slack as possible, make sure that the line is not twisted. YOU MUST PULL THE LINE TIGHT BEFORE USING THE RATCHET (the ratchet will only take up about a foot of line).
- Once line is pulled tight, start ratcheting by cranking the handle back and forth until the line until it appears straight or nearly straight. DO NOT OVER-TIGHTEN! The ratchet should be underneath the line when complete.

UNINSTALLING YOUR ZIP QUICK

- When taking down your zipline the first step is to release the ratchet
- To release the ratchet, pull up the vinyl coated gate inside the ratchet handle and open all the way until flat. EXPECT A “POP”
- The second release gate should open, releasing the spool and the line tension should “pop” open with webbing releasing (Figure 8).
- Continue to pull on the line until there is little tension left. Slide the remaining line out of the ratchet.
- Troubleshooting: If you ratchet too much of your line, you may experience difficulty releasing the line. Do your best to lay the ratchet open and completely flat. If you cannot lay the ratchet flat, try pulling the gate and the spring loaded piece on the opposite side of the gate at the same time, pulling in opposite directions (Figure 9). You may need another person to help free the line while you hold the ratchet open. If this does not work, try leaving the ratchet all the way open for several hours (overnight if possible), sometimes gravity and the weight of the ratchet will allow the line to release naturally. If still experiencing difficulty removing your line from the ratchet, please call customer service at 1-844-834-4334.
- Loosen the 3 U-Clamps at the starting point of your zipline course then remove the line from your tree and store in a cool dry place until you are ready to set it up again.



Figure 8

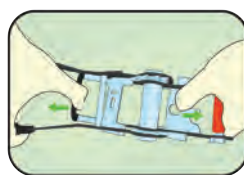


Figure 9

slackers[®]

EXTREME OUTDOOR ADVENTURES

PRODUCT DISCLAIMER & NOTICE

BEFORE USING YOUR ZIPLINE, PLEASE READ CAREFULLY AND FOLLOW ALL WARNINGS AND INSTRUCTIONS INCLUDED WITH YOUR ZIPLINE KIT.

Activities involving the installation and use of ziplines are inherently hazardous by their nature. Poor installation, poor sight selection, inadequate rider instruction, poor adult supervision or improper use can cause severe injury or death.

WARRANTY: 1 year from date of purchase for parts and workmanship. The buyer, installer and user of the zipline MUST:

- Read, understand and follow the installation instructions and safety rules.
- Ensure proper oversight, supervision and instruction of others on the safe use and operation of the zipline.
- Ensure that all equipment is properly installed, used, inspected and maintained before each use.
- Before each use, check to see that obstructions and hazards are removed from the zipline path and that all non-users are a safe distance from course.
- Avoid taking risks

The buyer, installer, and user of this product assume all risk and accept all responsibility for any damage or injury, including death, that may arise from the use of the RIPLINE Zipline.

BE CAREFUL AND HAVE FUN OUTDOORS!