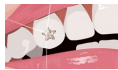
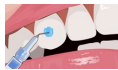


# TWINKLES BONDING GUIDE

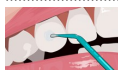
Twinkles can only be bonded to a live tooth



**1.** Make sure you and your client are in agreement of exactly where to place the Twinkles. Prepare the tooth for bonding like any resin retained restoration. In salons clean with a moist cotton roll.



**2.** Apply Etch on an area slightly larger than the gem being mounted. Leave for 20 seconds. Wipe off the gel with a moist cotton roll and in a downward motion. Clean thoroughly with a wet roll to moisten the surface. Secure that all the etch is removed and does not come in contact with the gum. With a dry cotton roll wipe the tooth dry until you get a white frosty surface. This is vital to achieve a firm attachment. If you do not get the frosty surface, repeat the procedure.



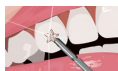
**3.** Apply a thin layer of the Bonding with the micro brush to the frosty area. Dab with a cotton roll fast and light to remove any excess.



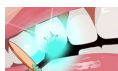
**4.** Apply a thin layer flowable composite onto the tooth covering the etched area.



**5.** Put a small amount of vaseline on the tip of a probe or use the revers end of the micro brush dipped in vaseline. Pick up the gem by gently pressing at the front of the jewel. Do not use tweezers. Place the Twinkles in the flow and twist the probe slightly to loosen it. Use the probe to position the gem correctly where you and your client agreed upon. Push the gem gently around in the flow to cover the side of the gem. Use the backside of the probe to press the gem lightly against the enamel.



**6.** Smooth out excess material around the jewel with the probe. Leave composite thicker at the edge of the jewel, gradually thinning it out away from the edge. This creates a mechanical lock. When **bonding dental crystals** it is imperative to bond the side of the glass to prevent the glass from separating from the foil backing. This is best done by pushing the crystal around in the flow before pressing it in place against the enamel.



**7.** Press to make sure the jewel is in contact with the enamel. Light cure from the lingual surface of the tooth 20 sec. Finish curing from all angles on the labial surface. 20 sec. each angle.

## REMOVAL TECHNIQUE

Removing tooth jewelry can only be done in a dental clinic. Approach removal same way as removing a bracket from a tooth. Polish off all composite. Pumice and polish the tooth. **Note:** do not remove enamel, just bonding agent.

## DISCLAIMER

Twindent is not responsible for any injuries that may result from bonding, use or removal of Twinkles.

# TWINKLES

## DENTAL JEWELRY

Add a sparkle to your beautiful smile with Twinkles safe and high quality dental jewelry. Twinkles tooth gems have been designed and produced in Sweden for over 20 years. We use 24-18 karat solid gold and white gold, and real diamonds and gemstones when crafting our jewelry.



Small Heart



Large Heart



Round w Diamond 0,01c



Round w Diamond 0,02c



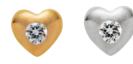
Small Star



Large Star



Star w Diamond



Heart w Diamond



Female sign



Dollarsign



Evil Eye with Sapphire



Hamsa



Cross



Ankh Egyptian Cross



Star of David



Smiley/Soccerball



Scorpion



Bunny



Horseshoe



Dolphin



Droplet



Treble Clef



Anchor



Tic-mark

