

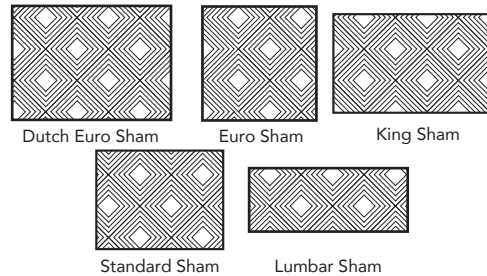
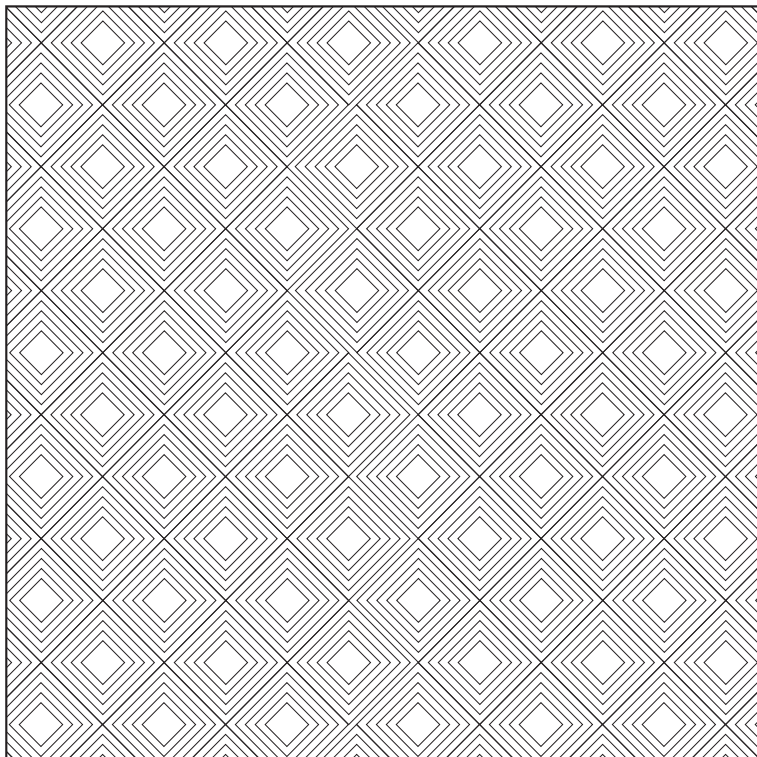
# London Quilt Collection



## Colors



Enzyme washed cotton velvet with a diamond quilting pattern. Back is a natural cotton fabric with a linen flax blend and contrast binding is 100% natural linen. Filling is 100% cotton 180 GSM. Shown in Beige.



Sizes	
King Quilt	108x102
Queen Quilt	92x96
Twin Quilt	72x90
Dutch Euro Sham	26x36
Euro Sham	26x26
King Sham	20x36
Standard Sham	20x26
Lumbar Sham	12x30

Contents of this page as well as all technical and artistic images are protected by the intellectual and industrial property laws. The information contained herein is legally privileged and confidential. It is prohibited to distribute or reveal its contents without obtaining previous authorization in writing form 3rd Party Trading LLC; the use of the said information for purposes other than those specifically authorized is also prohibited.