



Brushwood Toys
Unit 8 & 9 Hacche Lane Business Park
Pathfields, South Molton
Devon, EX36 3LH
Tel: 01769 574501
info@brushwoodtoys.co.uk
www.brushwoodtoys.co.uk

PB17 PRO BUILD INSTRUCTIONS

Before you start we recommend setting up a jig to make sure your build is straight and square from the offset. For best results I have used a panel of 18mm chip board as you see in the pictures here, and made a wooden surround on all 4 sides, the size of the panel is approximately 700mm x 900mm but it can be any size you like as long as it is big enough to take the pro build shed you have chosen. The wooden surround needs to stand proud of the base by around 10mm as you will use this edge to keep your wall constructions nice and straight and your shed square in the corners.

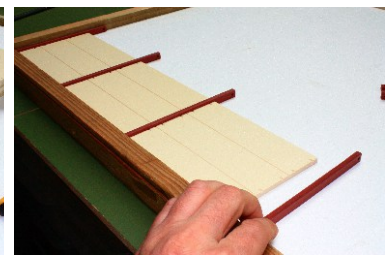
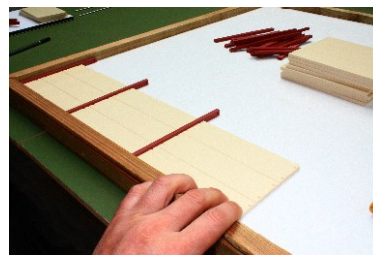
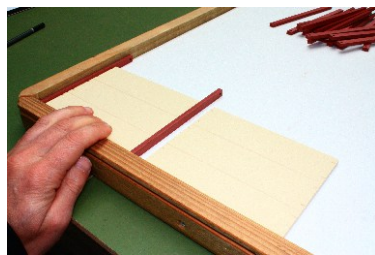
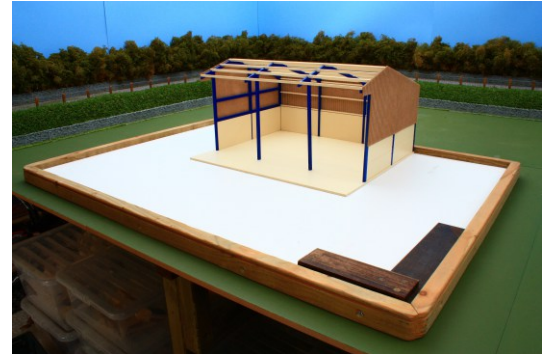
Your jig must be 100% level as any unevenness will affect the quality of the build and may make the latter stages of construction impossible (this is down to the fine tolerances the components are machined to).

The tools you will need are:

- 1) Super Shed Glue
- 2) A sharp craft knife with a new blade
- 3) An old tooth brush!
- 4) Plenty of patience

Construction stage 1:

Carefully cut out the RSJ uprights from the matrix using your craft knife. Remove any small pieces of debris on the edges using your tooth brush (do not use sand paper – too harsh). The following step by step picture guide shows you each stage of construction, but please take your time and dry-run each stage before you commit to gluing to make sure you are doing it all correctly: You will make your left and right walls to the silage pit first (as they are both the same).



Place an RSJ upright into the corner of your jig then apply a small amount of glue to both edges of your prestressed concrete wall sections, offer the wall up to the RSJ then quickly offer up a second RSJ to the other side, work your way along until you have used 3 wall panels and 4 RSJ uprights.

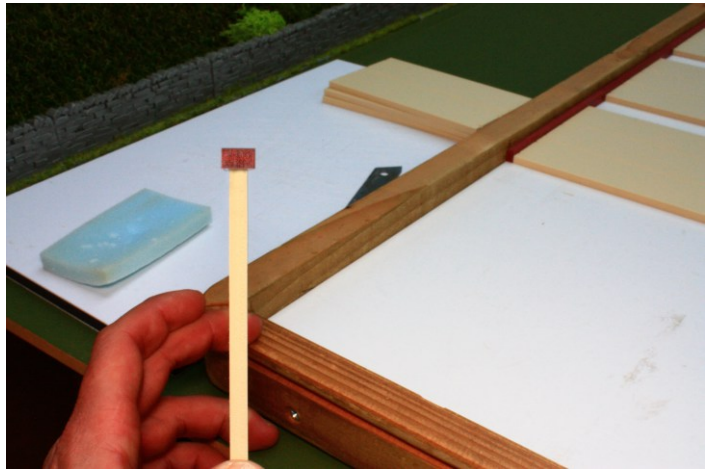
IMPORTANT: make sure the detailed edge of the wall sections are facing upwards and do not apply too much glue as this will make all the parts stick to your jig.

Repeat the above to make both the left and right walls, leave to dry for 15mins.

Your next stage is to construct the back wall using exactly the same procedure as above but this time using 4 wall sections and 5 RSJ uprights.

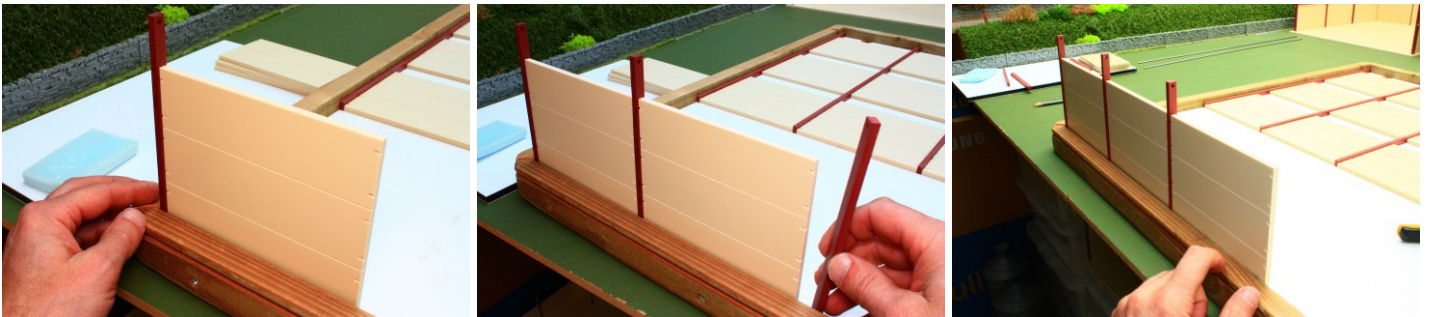


You will use a slightly different procedure to make your middle dividing wall as you will want your wall to sit centrally to the RSJ's (rather than flush to one side as shown to the right).

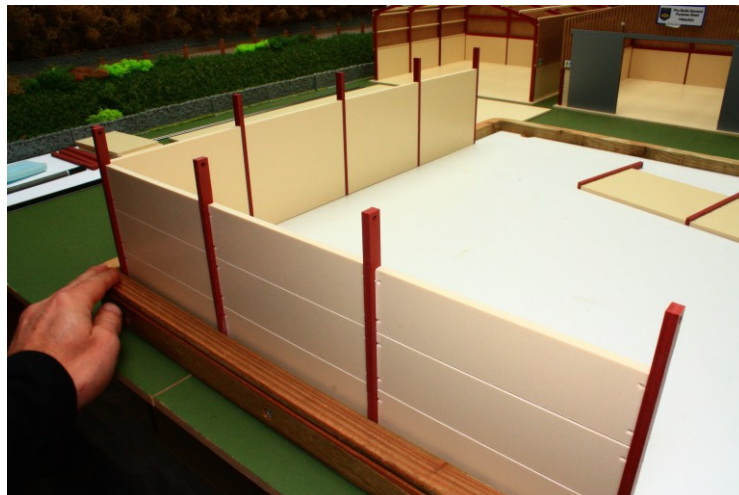


Place an RSJ upright into the corner of your jig in an upright position, then apply a small amount of glue to both edges of your wall section, offer the 2 parts up and quickly offer up the second RSJ, making sure the walls are central to the RSJ.

Work your way along as you see in the pics below using 3 wall sections and 4 RSJ's in total. Leave to dry for 15 mins.



Now you are ready to construct the clamp, offer up the left wall to the back wall in the corner of the jig **MAKING SURE THE RSJ UPRIGHTS MEET IN THE SAME WAY AS YOU SEE IN THE IMAGES BELOW**

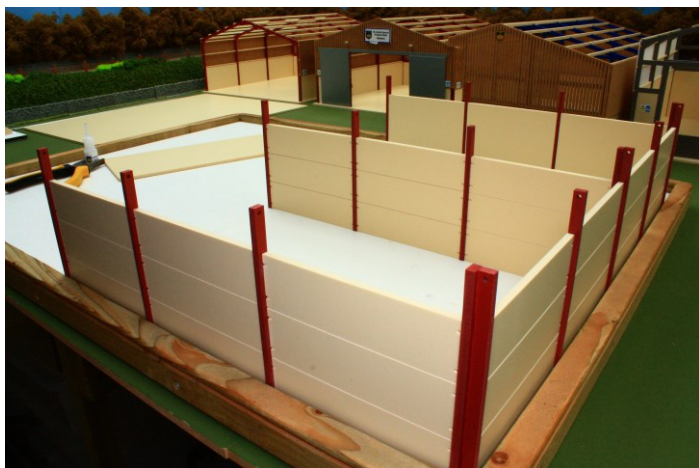
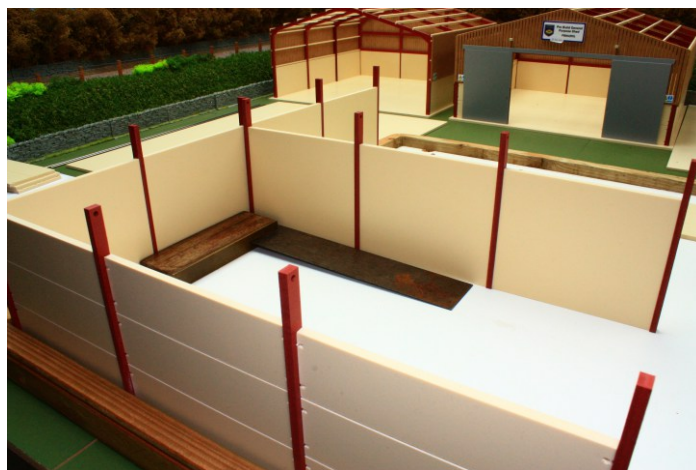


Close up of the way you need to position the RSJ uprights:



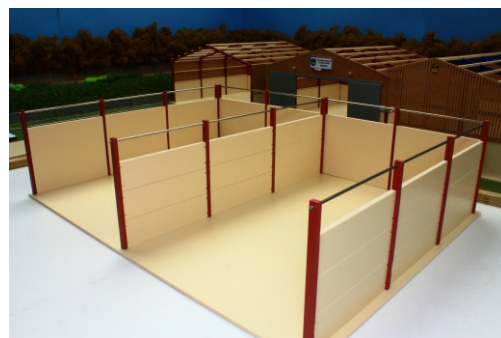
Once happy with the above, run a thin line of glue down the RSJ of the back wall and offer up the side wall. Leave in place for 5 minutes before proceeding to the next stage.

Once dry, then offer up your middle wall to the back wall using a square for guidance, apply a thin line of glue to the middle RSJ upright on the back wall and press together – again leave to dry for 5 minutes.



Repeat the same process for the right wall as you did for the left wall, using your jig to make sure all is square.

Leave your assembly to dry for 20 minutes and then you are ready to apply to the base. Without applying any glue sit your connected walled sections onto the base and mark with a pencil or masking tape the 4 corners and where the middle wall sits square to the rest. You will have a small amount of movement in the walls if required to square up to the base. Apply a small amount of glue to the bottom of each RSJ and a thin line along the bottom of the walls as shown below then place carefully onto the base. Leave for 15 minutes and then slide the steel safety bars into place along the tops of all the walls.



Well done – you are now there and your PIT is complete:

PS: Some warm soapy water may now be needed to get that hardened glue off your finger-tips!
Any problems please call us – we carry a full range of spare parts if required and are very happy to chat on the phone if you would like to go through the construction stages before you commit to your pro-build.

Kind Regards

Paul

Owner – Brushwood Toys