



BRUSHWOOD PRO BUILD RANGE AGE 14+ (not a toy) 1:32 SCALE

Brushwood Toys
Unit 8 & 9 Hacche Lane Business Park
Pathfields, South Molton
Devon, EX36 3LH
Tel: 01769 574501
info@brushwoodtoys.co.uk
www.brushwoodtoys.co.uk

PB16 PRO BUILD INSTRUCTIONS

Before you start we recommend setting up a jig to make sure your build is straight and square from the offset. For best results I have used a panel of 18mm chip board as you see in the picture below and made a wooden surround on all 4 sides. The size of the panel is approximately 700mm x 900mm but it can be any size you like as long as it is big enough to take the pro build shed you have chosen. The wooden surround needs to stand proud of the base by around 10mm as you will use this edge to keep your wall constructions nice and straight and your shed square in the corners

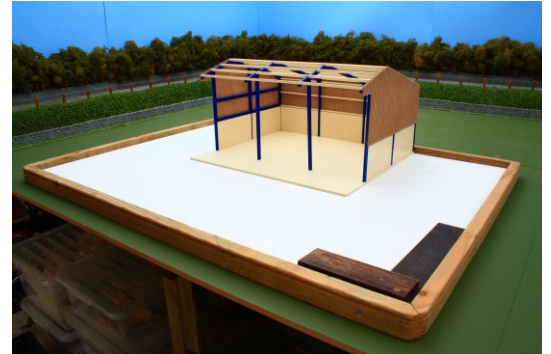
Your jig must be 100% level as any unevenness will affect the quality of the build and may make the latter stages of construction impossible (this is down to the fine tolerances the components are machined).

The tools you will need are:

- 1) Super Shed Glue
- 2) A sharp craft knife with a new blade
- 3) An old tooth brush!
- 4) Plenty of patience

Construction stage 1:

Carefully cut out the roof purlins and wall cladding rails from the matrix using your craft knife. Remove any small pieces of debris on the edges using your tooth brush (do not use sand paper – too harsh). Remember you have 2 different sizes of each, the 145mm purlins and cladding rails are for the end bays and the 142mm purlins and cladding rails are for the middle bays. **Important: DO NOT MIX UP the two sizes or types or you will RUIN your construction.**



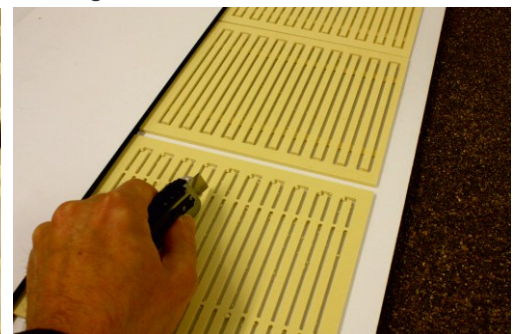
Picture Of Wall Cladding Rails:



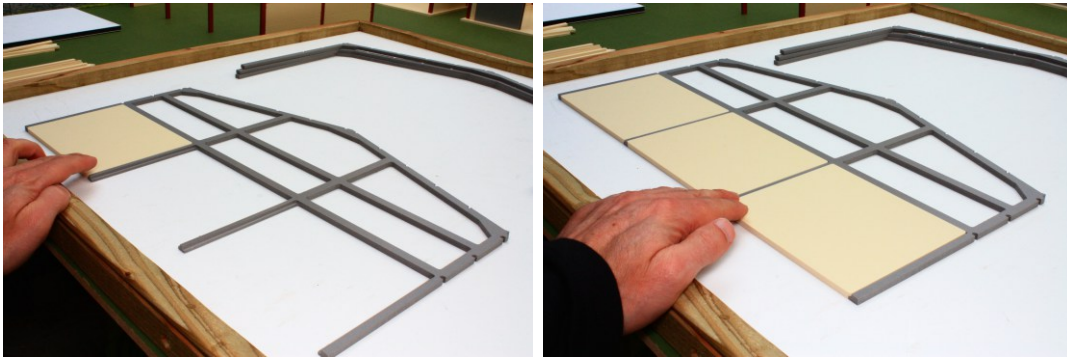
Picture of Roof Purlins:



Cutting from Matrix:



The following step by step picture guide (on Page 2) shows you each stage of construction but please take your time and dry-run each stage before you commit to gluing to make sure you are doing it all correctly:

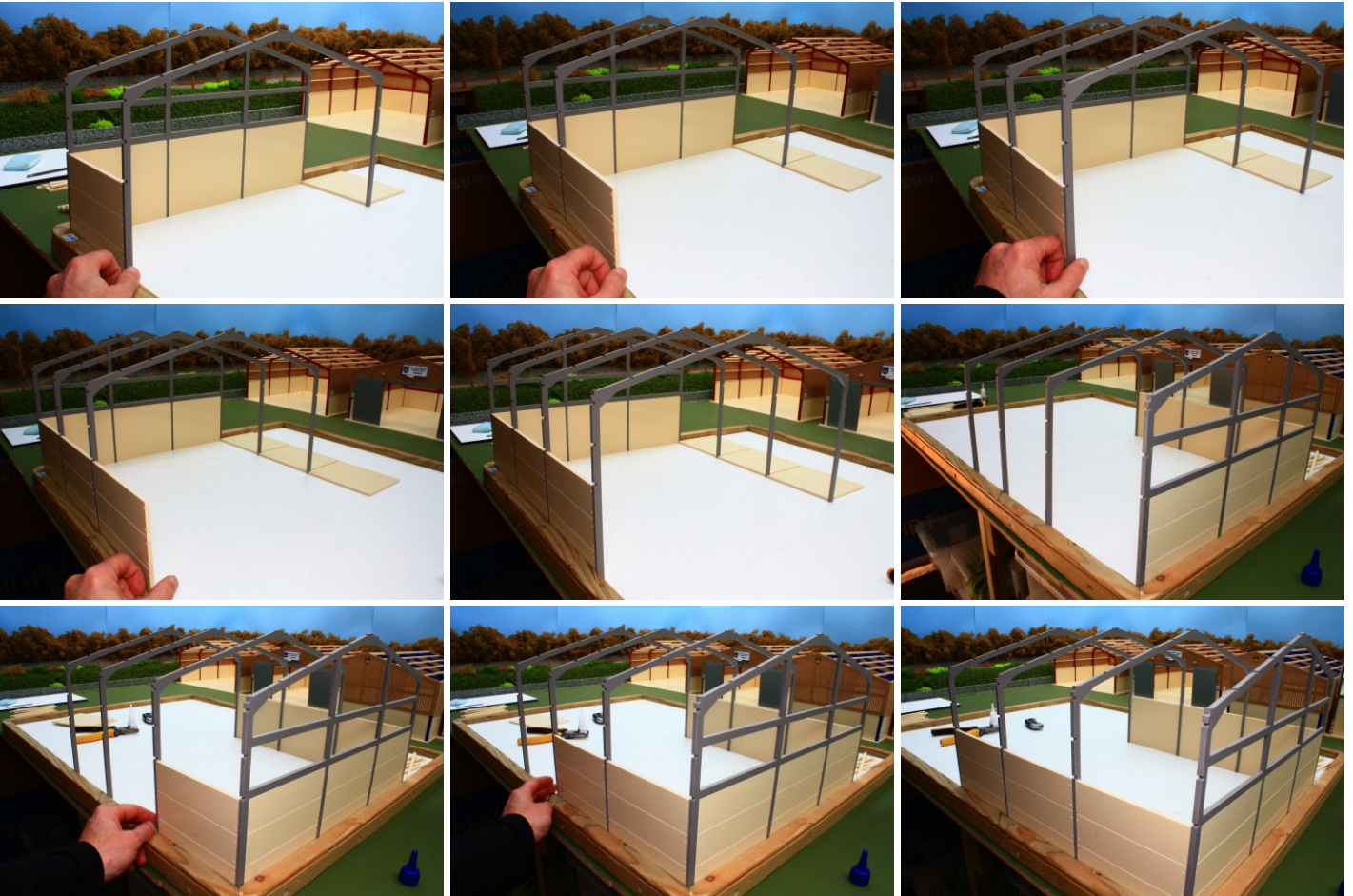


Lay the back gable end down flat on your work surface, offer up the prestressed concrete wall panels making sure you are using the panels that have the rebate along the ends and small radius corners. This rebate and radius makes for a very snug and tidy fit within the recessed lower areas of the gable ends and makes the walls flush both on the inside and outside of your shed. Lay a thin line of glue within the recessed area of the gable ends and position the panels into place. Make sure they are square and level with the bottom edge of the wall and hold tight for 10 seconds for the glue to bite. Leave for 5 minutes for the glue to set.

Your next stage is to construct the side walls of your shed. Take your 3 x internal A-frames (ONE OF THIS WILL BE YOUR FRONT A-FRAME) and 6 x prestressed concrete wall panels for both side walls (these are square edged and have no rebate).

Using your jig, offer the up the first gable wall as you see in the image and carefully glue the first side wall panel to the gable end – use your jig to make sure the construction is square and the uprights of the A frame and gable end are in-line. Important: make sure your prestressed wall panels are facing the right way so that you can see the channel detail from the outside of the shed – this applies to the gable ends and the back wall – otherwise your shed will look inside out!

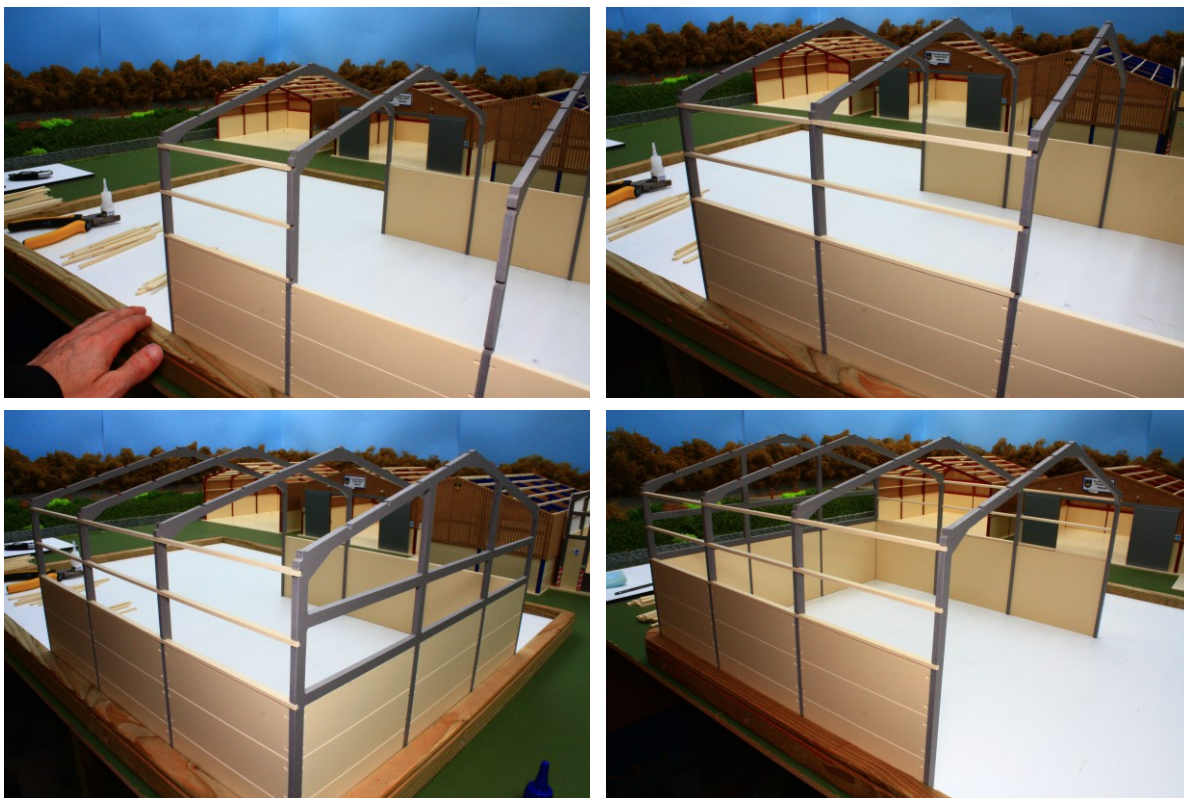
Work your way along the side walls in stages as you see in the images below, making sure your wall panels, gable ends and internal A-frames are upright and square all along. Leave for 10 minutes for the glue to set. **IMPORTANT: IF YOUR CONSTRUCTION IS NOT SQUARE, UPRIGHT AND IN-LINE YOUR ROOF PURLINS AND CLADDING RAILS WILL NOT FIT CORRECTLY AND YOU MAY RUIN YOUR SHED – SO TAKE YOUR TIME!!**



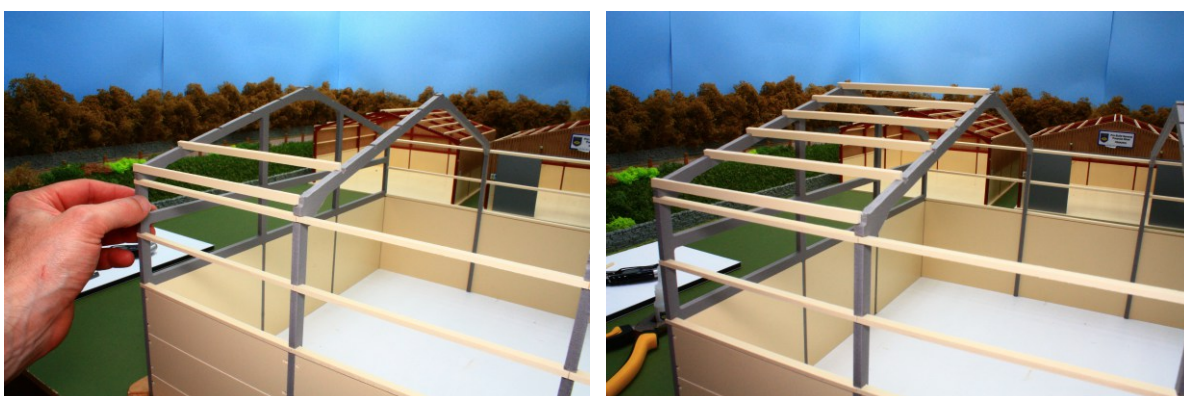
The next stage is to glue your wall cladding rails to your side walls. Carefully separate the END cladding rails (145mm long) from your MIDDLE BAY cladding rails (142mm long) and leave them in 2 separate piles. **Important: the END cladding rails have a larger cut-out to one end only – and this end of the cladding rail must be located into the GABLE END UPRIGHTS ONLY.**

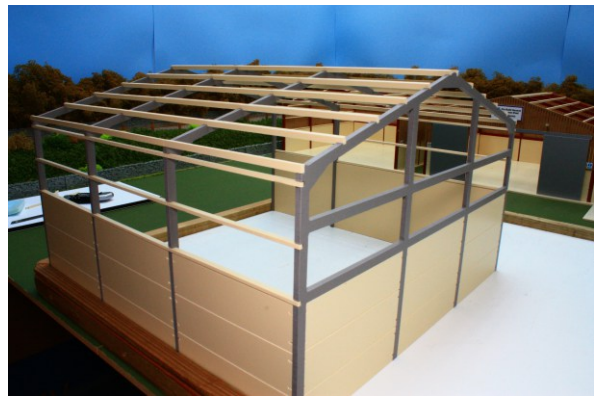
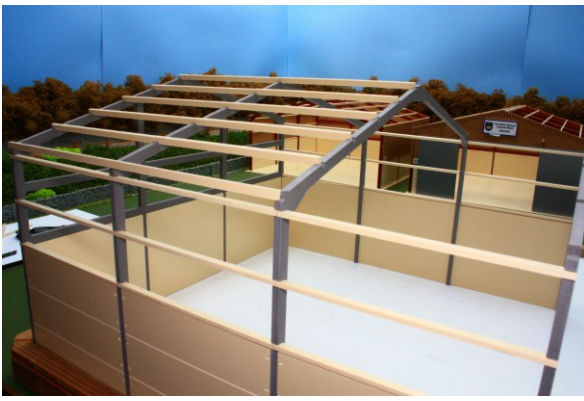
Each bay takes 3 wall cladding rails starting from the top of your prestressed concrete wall panel sections working upwards.

Do a DRY RUN first without using any glue, and carefully position the wall cladding rails starting from either end of the shed – you will see they will 'click' into place and make the side walls flush ready to accept the Yorkshire boarding later on. Once you are sure you have the right pieces in the right place, working from one end, apply small blobs of glue to each end of the wall cladding rails and locate into the uprights, hold each one for 5 seconds until the glue bites. Once all done leave your construction for 10 minutes for the glue to cure.



Now you are ready for roof purlins. Carefully separate the END roof purlins (145mm long) from your MIDDLE BAY roof purlins (142mm long) and leave them in 2 separate piles. **Put a post-it note on each pile so you don't make a mistake during construction, label them END and MIDDLE – you will thank me for giving you that advice!** When happy with the above, look at the following images and start from one end and apply a small blob of glue to each end of your 145mm purlins and position into place. You must make sure the purlin is 100% flush with the outside of the gable end and sits perfectly in the middle of the internal A-frame. Repeat for the whole bay working your way from one side of the shed, up over and towards the other side. The only really fiddly-bit is the purlin that sits at the top of the side walls – when gluing into place carefully push against the gable end and internal A-frame so the purlin sits flush to the side wall – very important when you go to attach the Yorkshire boarding panels. Go to your pile of the shorter 142mm purlins and complete your middle bay, again starting from one side working your way up over the top and down to the other side. Then back to you 145mm purlins to complete the last end- bay as you see below. Leave your shed to set for 20mins.





You are now ready to apply the Yorkshire boarding panels to the side walls and gable ends of your shed. Carefully remove any fluffy bits in the Yorkshire boarding using your tooth brush – do this from both sides to give a smooth finish.

YOU MAY WANT TO DO THIS PART OUTSIDE AS IT CAN GENERATE A BIT OF DUST, WEAR A DUST MASK IF REQUIRED

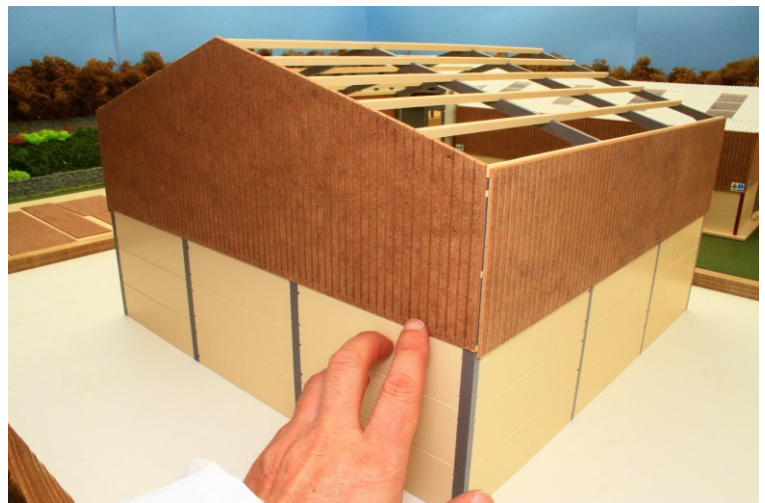
Your Yorkshire Boarding for the side walls comes in 2 panels, 1 x 2 bay and 1 x 1 bay. Apply a line of glue along the 3 rows of wall cladding rails and along the line of top roof purlins – these are the main contact points for your boarding. Offer up the larger panel making sure it is flush to the gable end and press against the rails/purlins making sure it is straight and level. You will want to see approx 2mm of the top roof purlin showing over the top of your boarding panel – this allows any roof section to sit properly. Offer up the smaller single bay boarding panel and repeat the gluing process.

IMPORTANT – MAKE SURE YOUR BOARDING PANELS ARE THE CORRECT WAY AROUND – THE FLUSH SIDE SITS AGAINST THE SHED – OTHERWISE IT WILL LOOK INSIDE-OUT. Do this for both sides



Then offer up the Gable end boarding panel making sure is not inside out (flush side sits against the shed). See the main contact points on the frame and apply a thin line of glue along them – press and hold the boarding panel in place for 15 seconds.

It is important that you make sure the top edge of the boarding panel sits flush with the top edge of the roof purlins for a professional finish.



You are now ready glue your shed to the base. You must be very careful now to make sure your construction is completely square – i.e. the walls are square to each other and they sit square on the base.

Once you are happy the walls are at perfect right angles apply a few spots of glue to the bottom of the uprights, position and hold for 10 seconds to create a rigid construction. You will need to be quick with any final adjustments at this stage as the glue bites very quickly!

Well done – you are now there and your shed is complete:



PS: Some warm soapy water may now be needed to get that hardened glue off your finger-tips!

Any problems please call us – we carry a full range of spare parts if required and very happy to chat on the phone if you would like to go through the construction stages before you commit to your pro-build.

Kind Regards

Paul

Owner – Brushwood Toys