

Mica Tornado Flush Wall Faced Toilet Suite

TL101MICA

Features

1. **Nano Glaze** - Perfect smoothness on the surface that will not catch and easy to clean
2. **Tornado Flush** - Boxed rim ensure water is evenly distributed and the circular flush
3. **Water Efficient** - 4 star WELS rated water efficiency.
4. **Slimline soft-close seat** - The seat closes gently onto the bowl - no more unpleasant bangs
5. **Quick Release Seat** - Seat can be easily removed for cleaning and reattached to use
6. **Fully Glazed Trapway** - Waste passes through easily without getting caught
7. **Universal trap for S or P trap installations**
8. **Fully Compliant** - Manufactured to Australian Standards, WaterMark certified

Technical Specification and Attention

Description	Specification
Connection Size	G1/2
Operating Temperature Range	10-38 °C
Operating Pressure Range	0.14 -0.55MPa
Water Consumption for 2180	4.5/3L



THIS PRODUCT MUST BE INSTALLED BY A QUALIFIED TRADESPERSON-FAILURE TO DO SO WILL VOID ALL WARRANTIES



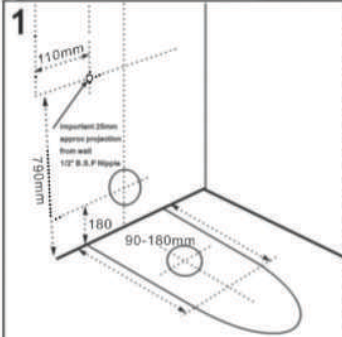
BEFORE INSTALLATION: ALL COMPONENTS MUST BE INSPECTED CAREFULLY FOR DEFECTS, DAMAGE, FAULTS AND THAT THE ITEMS ARE CORRECT.

Contact AROVA immediately - installation is acceptance of goods will void warranty.
No claims for damages or incorrect products will be recognised after installation.

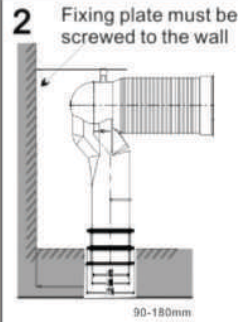


Installation Guide

S-Trap

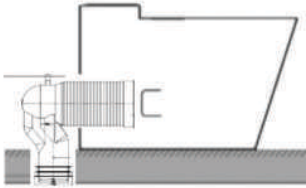


1. Rough in position of water inlet, waste outlet.
Ensure inlet connection extends 60mm from finished wall.



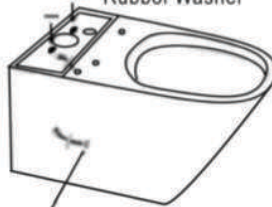
2. Fixing plate must be screwed to the wall
2. Lubricate the fins of the pan bend and position into waste pipe.

3. Lubricate rubber on the exposed connector end

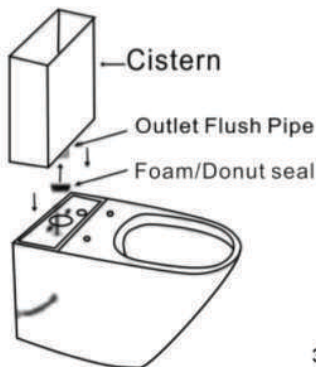
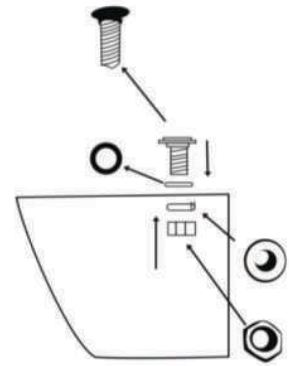


TOP INSTALL SYSTEM & EASY-REMOVE

— Brass Spigot
— Rubber Washer



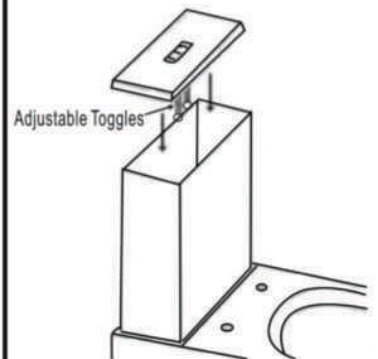
Side Entry Water Connection
(Hose Sold Separately)



3



4



5



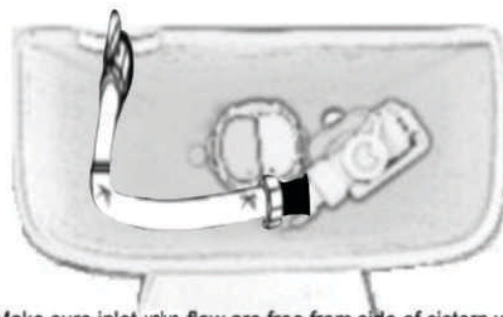
Installation Guide

P-Trap

<p>4</p>	<p>4. Align and push fully assembled toilet back to the wall</p>	<p>5</p>	<p>6</p>
			<p>6. Align and push fully assembled toilet back to the wall, connecting pan spigot to pan collar. Bucket flush and check for leaks. Due to the design, weight and stability of the pan and cistern a silicone adhesive only is recommended and accepted by manufacturer for floor based fixing.</p>

<p>7</p>	<p>7. IF BACK INLET, SKIP THIS STEP. Remove cap from cistern plug A or B at base cistern. Connect flexible hose to cistern plug A or B depending on location of stop tap. Complete stop tap connection to underside of cistern plug C or D. Fill cistern and ensure correct water level.</p> <p>Note: 1. Inlet valve can be adjusted if required.</p>
-----------------	---

<p>8</p>	<p>8. IF STEP 8 IS COMPLETED, SKIP THIS STEP. Fit off stop tap then connect rear water inlet valve to stop tap. Fill cistern and ensure correct water level.</p>
-----------------	--



Make sure inlet valve flow are free from side of cistern wall.

If inlet valve been jam on the cistern wall, it will cause inlet valve keep filling. The water inlet working pressure: 140Kpa--550Kpa.