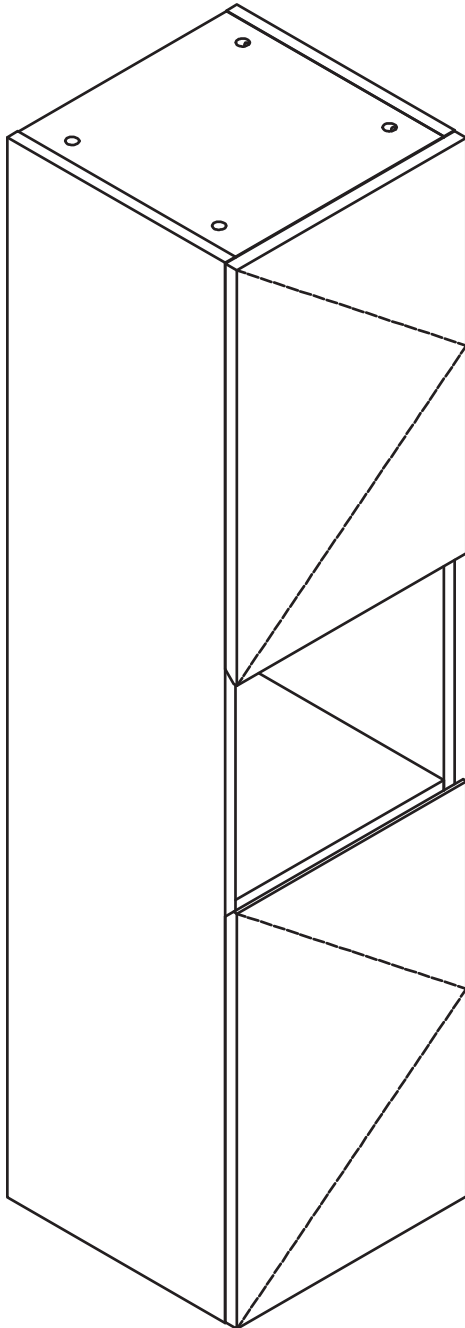


TALLBOY INSTALLATION



Please read this installation instruction BEFORE installations. If the product is not installed in accordance with these instructions by a qualified tradesperson to a tradesperson standard. Failure to do so, your Arova warranty may be void and the home owner may have a claim against you (the installer).



BEFORE INSTALLATION:

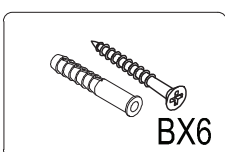
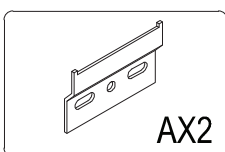
Inspect thoroughly to ensure the product has not been damaged and is correct.

Installation is acceptance of goods.
NO CLAIMS FOR DAMAGES OR INCORRECT PRODUCTS WILL BE RECOGNISED AFTER INSTALLATION.

INSTALLERS TO COMPLETE

Date Installed:	
Installer's Name:	
License #:	
Business Name:	
Phone #:	
Product Installed:	
Signature:	

* Please leave document to home occupier for future reference.



This product comes with a right-handed door as default. To install doors to the left, you can move the hinge brackets to the left panel of the carcass. If you choose to reverse the doors, Arova is exempted from any claims on holes, markings and any blemishes from previous installation on the right panel as these are very normal and expected from installation.

✓ PRIOR TO INSTALLATION

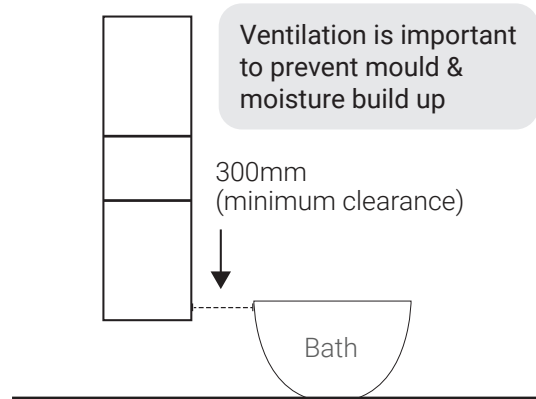
1. Inspect products for any damages

Within 48 hours of receiving your goods, unpack your Arova product and check for any possible freight damages, missing parts or incorrect items. Contact Arova (info@arova.com.au) in writing immediately with your order number, product code and attach clear images where appropriate.



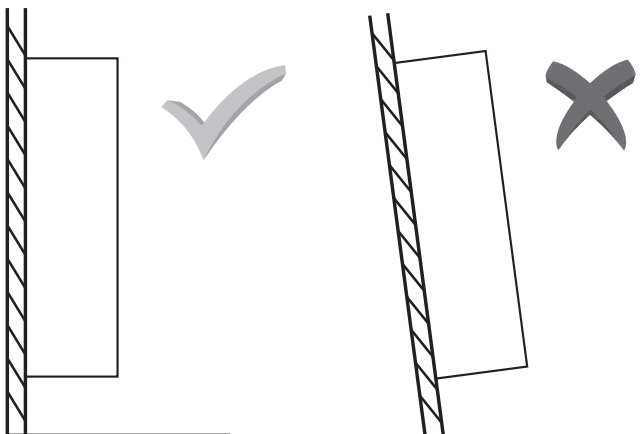
2. Keep 300mm away from wet areas

It is recommended that tallboy cabinets are installed at least 300mm away from wet areas. Do not expose the cabinet to shower sprays or bath water splash as materials used in the construction of our tallboy units are moisture and humidity resistant, not water proof.



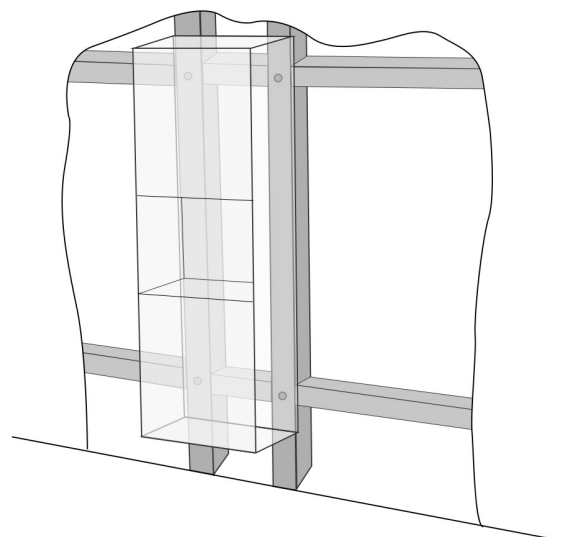
3. Ensure walls are plumb

Before installing, check that your wall is straight and plumb. If it is impossible to make the wall straight, the cabinet need to be packed out so that it can be finished straight. If your cabinet is fixed to non-plumb wall, the cabinet will be finished twisted and the doors will fall out of alignment and not operate properly.

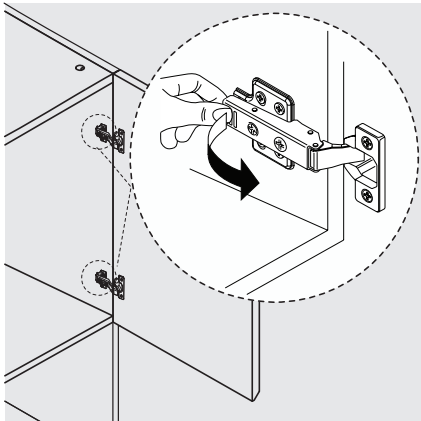


4. Check for support beams

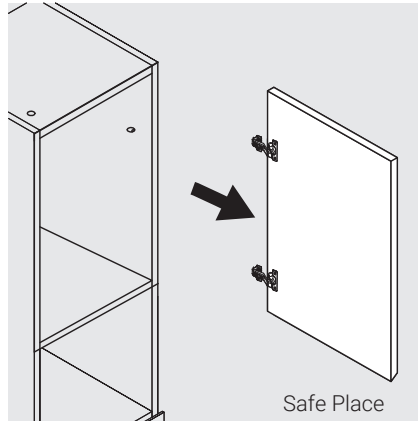
Support beams are required between the studs to give a solid wall backing to attach the tallboy. Cabinet must be attached to a minimum of 2 support beams or studs.



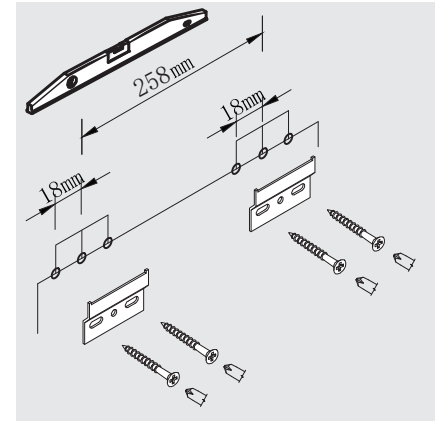
 **INSTALLATION**



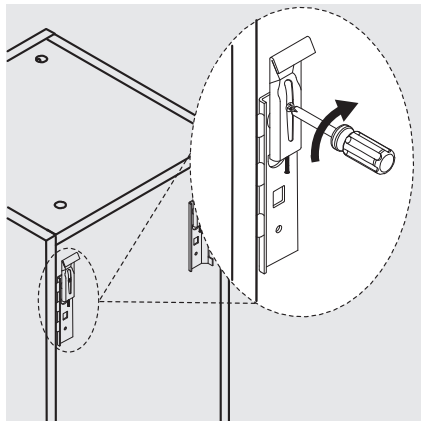
1. Remove doors. Apply finger pressure to clip at the end of hinge and pull forward to release.



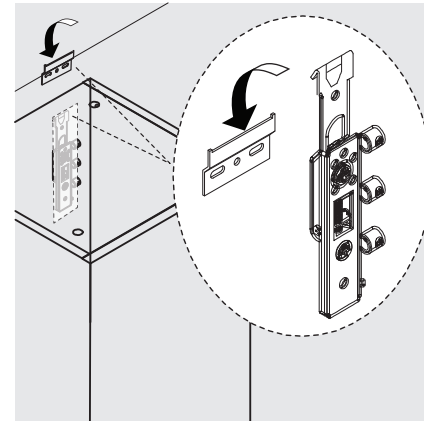
2. Place removed doors/components flat on soft surface/safe place to avoid damages.



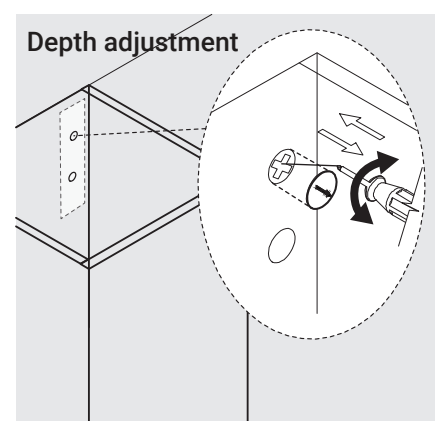
3. Install mounting bracket assembly to the horizontal beam. Ensure the brackets assembly are level.



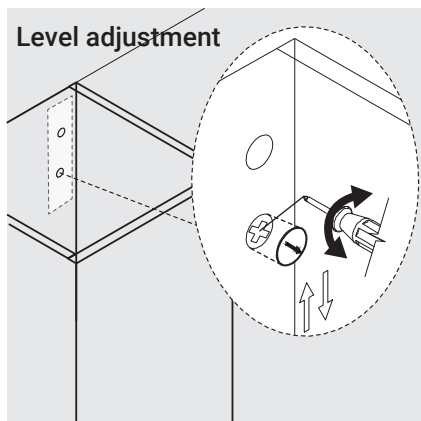
4. Locate hanging brackets in the back of the cabinet. Turn the screw clockwise so the hook will come out of side panel.



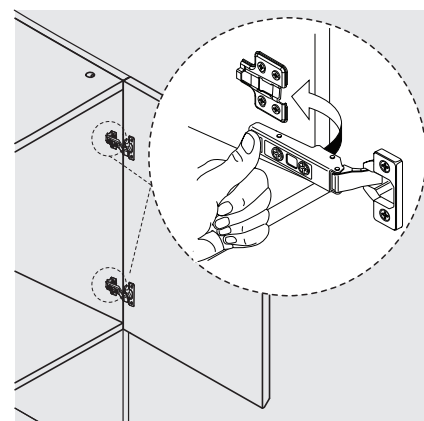
5. Hang the cabinet on and ensure the 2 brackets are fully engaged.



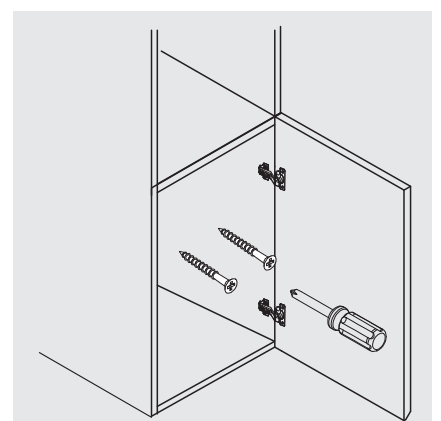
6. The gap adjustment screws are behind top white plastic covers. Remove the plastic covers inside the cabinet and turn the top screws clockwise/counter clockwise to achieve ideal gap between the cabinet and wall.



7. The level adjustment screws are behind bottom white plastic covers. Remove the plastic covers inside the cabinet and turn the bottom screws clockwise/counter clockwise to tune the height of tallboy.



8. Put doors back to cabinet. Engage hinge arm to mounting bracket, press the back of hinge into place. When you hear a 'click' sound, the hinge is engaged.



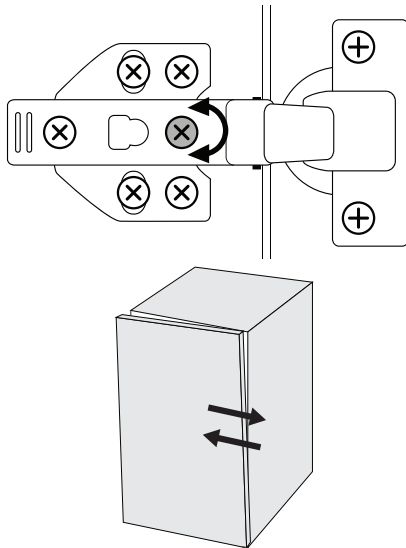
9. Once you are happy with the position of the cabinet, add extra screws to secure the cabinet to studs/ support beam.

ADJUSTMENT

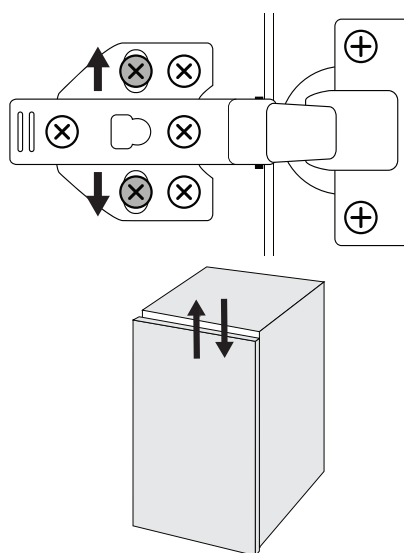
NOTE:

IT IS THE INSTALLER'S RESPONSIBILITY TO MAKE ADJUSTMENTS TO DOORS/DRAWERS ALIGNMENT AFTER INSTALLATION!

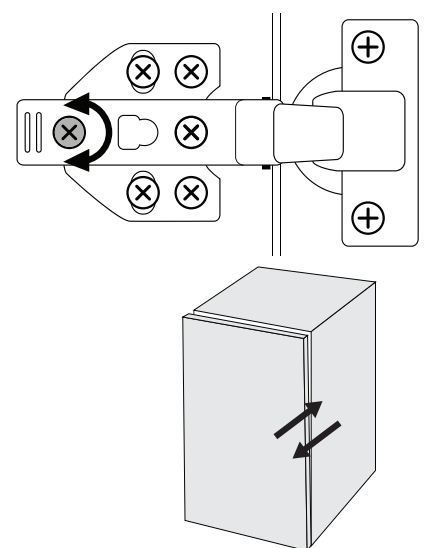
Adjust door overlay



Adjust door height



Adjust door depth



CARE & MAINTENANCE

AROVA products are produced from materials that are well suited to the bathroom however all products require cleaning and maintenance to ensure longevity.

The best method of maintaining the finish is simply to wipe over with a clean, soft cloth regularly. Any water spills should be wiped away immediately. It is important that no abrasive cleaners or wax-based creams are used.

Scratches

Avoid contact with hard or sharp objects. If minor scratches or fine marks occur on 2 pac paint surface, rub gently with cutting compound followed by buffing with car polish and a clean, soft cloth.

Burns

Avoid placing hot objects, such as hair straighteners, curling tongs on any surface as these will cause burns, discolouration and marking. Should slight accidental damage occur, it may be possible to remove minor marks with the same approach as for scratches above.

Chemical damage

Chemical products spills should be removed immediately and any chemical residue should be cleaned with a soft and clean cloth. Examples of common household chemical products: hair dye/lacquer/sprays/removers, bleach, after-shave lotion, nail polish and remover, mineral turpentine, white spirit, kerosene, aerosol propellants and insecticides.



WARRANTY

For up to date warranty information please go to:

<https://www.arova.com.au/pages/warranty>

For any other further information please contact your nearest Arova showroom