

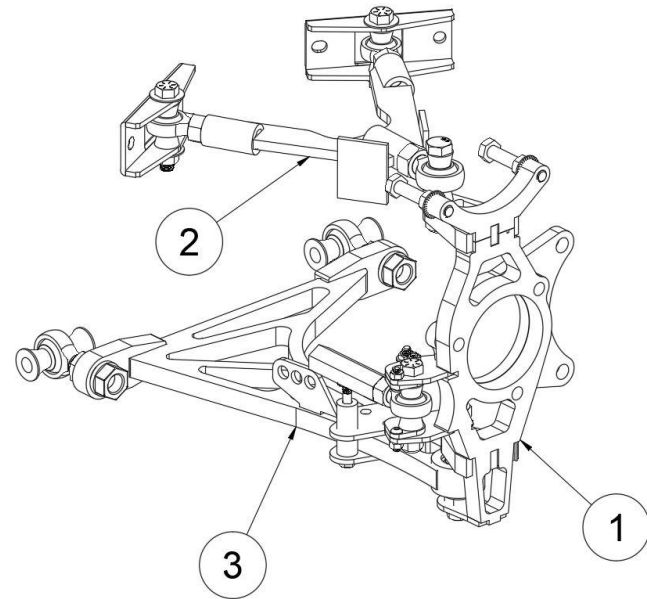
# Installation Guide



## C5/C6 MEGA MANTIS KIT

Fully Assembled view of the C5/C6 mantis kit is shown for the left side of the car

- 1- Steering Knuckle
- 2- Upper control arm
- 3- Lower control arm



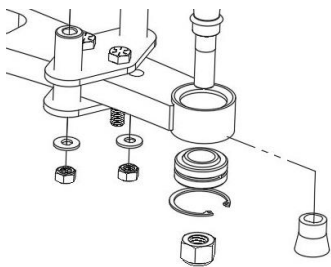
\*Bolt check regularly, take note of the orientation of all the components in this view\*

\*do not exceed the rod ends adjustments, each rod end should have a minimum of 1 to 1.5x the diameter of the joint. (example, a 3/4" rod end needs to have approx. 3/4"-1 1/8" inside of the arm at a minimum, this is 12-18 threads)

**-ACKERMANN PLATES** see image for how to change the ackermann plates. The kit includes +2, 0 and -2 ackermann plates. This is the difference in angle measured at full lock. Example- with 0 ackermann plates installed the angle of the car will be 60 on the inside wheel, and 60 on the outside. \*please note that alignment settings, rack position and other variables can effect the ackermann curve resulting in differences from chassis to chassis, make adjustments according to your individual setup\*

**BUMP STOP BOLTS**- using these bolts, adjust the length to limit the angle. This is to avoid contact from the wheel to control arms components

**SNAP RING**- The snap ring **must** be installed on the bottom of the control arm, see image below



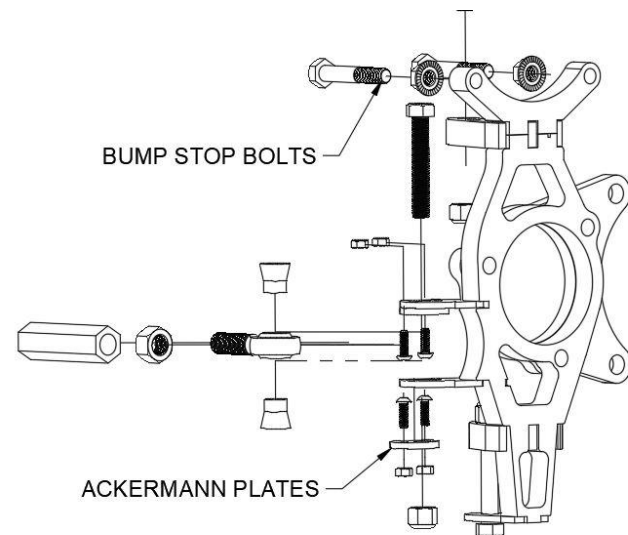
### Alignment Recommendations

**Caster** 7 + or - .5

**Camber** -4 + or -1.0

**Toe** 0-1/8<sup>th</sup> out

**Wheel size recommendation** 18x9 +10 offset (close to this size will work well)



**For Racing  
Use only**



**Not For  
Road Use**

Must be installed by a licensed professional



fdfraceshopcustomerservice@gmail.com

+1(613)243-8859