

Installation Guide

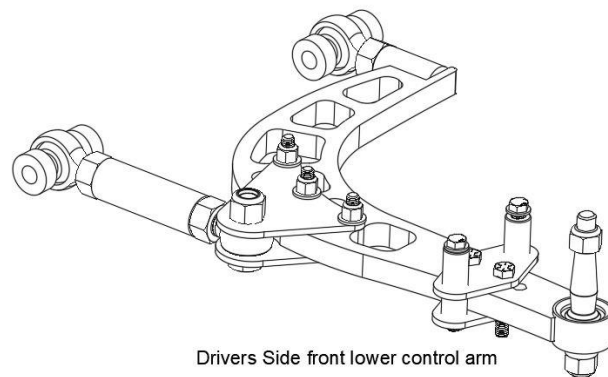


C5/C6/C7 LOWER CONTROL ARMS

Fully Assembled view of the driver's side front lower control arm

Bolt check regularly, take note of the orientation of all the components in this view

*do not exceed the rod ends adjustments, each rod end should have a minimum of 1 to 1.5x the diameter of the joint. (example, a 3/4" rod end needs to have approx. 3/4"-1 1/8" inside of the arm at a minimum, this is 12-18 threads)

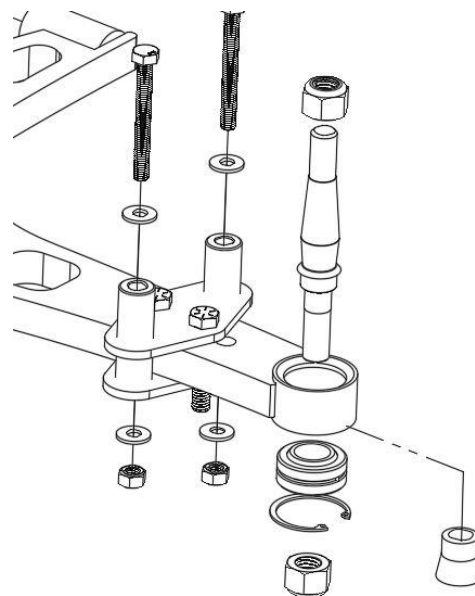


Drivers Side front lower control arm

-Exploded view of shock mount and bearing shows important details such as

1- the snap ring must be on the bottom of the control arm*

2- the shock mount has 3 positions for motion ratio, motion ratio is used to change the leverage that the control arm has on the spring/shock. Moving the mount towards the outside of the car will increase stiffness, moving the mount inward (towards the engine) will soften the suspension.



Alignment Recommendations

Caster- 7 degrees + or - .5

Camber -3 + or -1.0

Toe 0-1/8th out

Wheel size recommendation

18x9 +10 offset (close to this size will work well)

**For Racing
Use only**



**Not For
Road Use**

Must be installed by a licensed professional



fdfraceshopcustomerservice@gmail.com

888-361-7223