

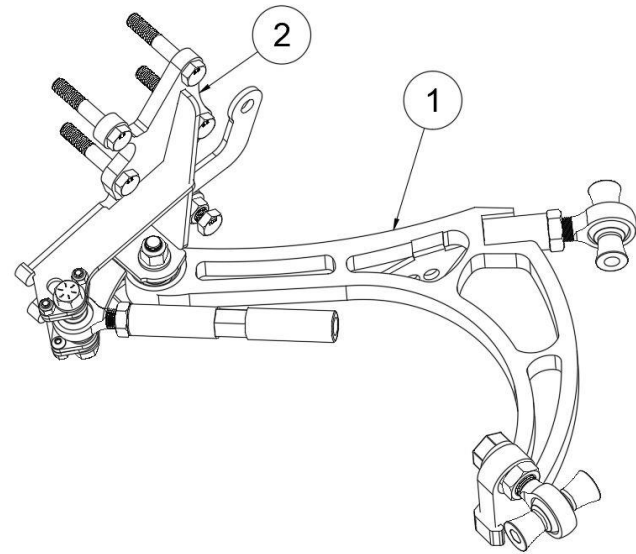
# Installation Guide



## BMW E8X MANTIS KIT

Fully Assembled view of the BMW E8X mantis kit is shown for the right side

- 1- Lower Control Arm
- 2- Knuckle adaptor

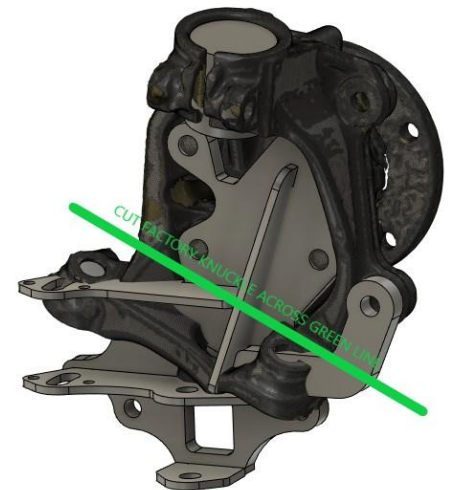


\*Bolt check regularly, take note of the orientation of all the components in this view\*

\*do not exceed the rod ends adjustments, each rod end should have a minimum of 1 to 1.5x the diameter of the joint. (example, a 3/4" rod end needs to have approx. 3/4"-1 1/8" inside of the arm at a minimum, this is 12-18 threads)

**-ACKERMANN PLATES** The kit includes +2, 0 and -2 ackermann plates. This is the difference in angle measured at full lock. Example- with 0 ackermann plates installed the angle of the car will be 60 on the inside wheel, and 60 on the outside. \*please note that alignment settings, rack position and other variables can effect the ackermann curve resulting in differences from chassis to chassis, make adjustments according to your individual setup\*

**CUTTING AND GRINDING THE FACTORY KNUCKLE-** The factory knuckle needs to be cut along the green line, just below the bearing bolt holes. The knuckle will also need some radiused corners on the casting flattened with a grinder, to make sure the adaptor sits flat to the knuckle before fastening.



### Alignment Recommendations

**Caster** 7 + or - .5

**Camber** -4 + or -1.0

**Toe** 0-1/8<sup>th</sup> out

**Wheel size recommendation** 18x9 +10 offset (close to this size will work well)

**For Racing  
Use only**



**Not For  
Road Use**

Must be installed by a licensed professional



fdfraceshopcustomerservice@gmail.com

(613) 955-7223