

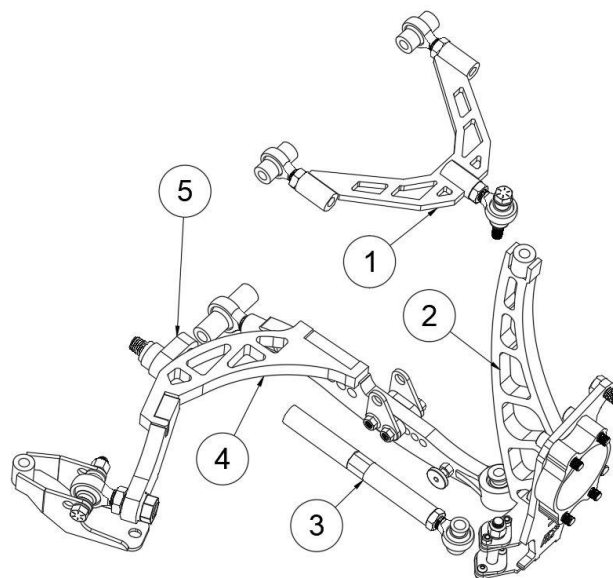
Installation Guide



370Z/G37 MEGA MANTIS KIT

Fully Assembled view of the 370Z/G37 mantis kit is shown for the right side of the car

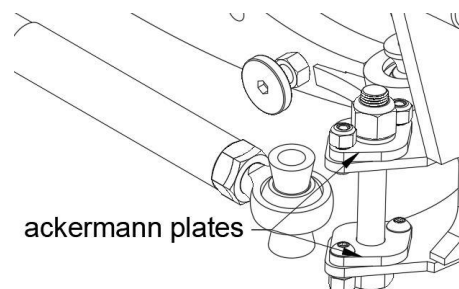
- 1- Upper control arm
- 2- 350z knuckle assembly
- 3- Outer tierod assembly
- 4- Right side lower control arm
- 5- Offset rack spacer



Bolt check regularly, take note of the orientation of all the components in this view

*do not exceed the rod ends adjustments, each rod end should have a minimum of 1 to 1.5x the diameter of the joint. (example, a 3/4" rod end needs to have approx. 3/4"-1 1/8" inside of the arm at a minimum, this is 12-18 threads)

-ACKERMANN PLATES see image for the ackermann plates. The kit will come with zero Ackermann plates installed and include +2/-2 options that can be changed out. Ackerman is the difference in angle measured at full lock. Example- with 0 ackermann plates installed the angle of the car will be 60 on the inside wheel, and 60 on the outside. *please note that alignment settings, rack position and other variables can effect the ackermann curve resulting in differences from chassis to chassis, make adjustments according to your individual setup*



BUMP STOP BOLT- using this bolt, adjust the length to limit the angle. This is to avoid contact from the wheel to control arms or other components

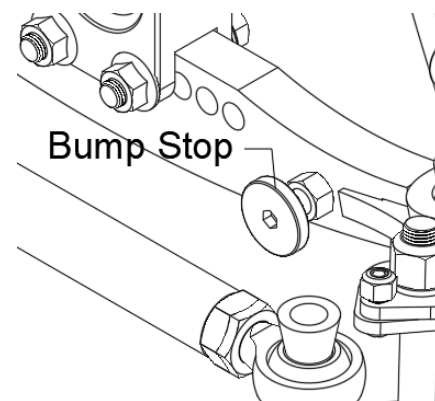
Alignment Recommendations

Caster 5.5-6.5 + or - .5

Camber -4 + or -1.0

Toe 0-1/8th out

Wheel size recommendation 18x9 +10 offset (close to this size will work well)



**For Racing
Use only**



**Not For
Road Use**

Must be installed by a licensed professional



fdfraceshopcustomerservice@gmail.com

888-361-7223