

# Installation Guide



## 350Z/G35 MEGA MANTIS KIT

Fully Assembled view of the 350Z/G35 mantis kit is shown for the right side of the car

- 1- Upper control arm
- 2- 350z knuckle assembly
- 3- Lower control arm assembly
- 4- Tierod assembly

\*Bolt check regularly, take note of the orientation of all the components in this view\*

\*do not exceed the rod ends adjustments, each rod end should have a minimum of 1 to 1.5x the diameter of the joint. (example, a 3/4" rod end needs to have approx. 3/4"-1 1/8" inside of the arm at a minimum, this is 12-18 threads)

**-ACKERMANN PLATES** see image for the ackermann plates. The kit will come with zero Ackermann plates installed and include +2/-2 options that can be changed out. Ackerman is the difference in angle measured at full lock. Example- with 0 ackermann plates installed the angle of the car will be 60 on the inside wheel, and 60 on the outside. \*please note that alignment settings, rack position and other variables can effect the ackermann curve resulting in differences from chassis to chassis, make adjustments according to your individual setup\*

**BUMP STOP BOLT**- using this bolt, adjust the length to limit the angle. This is to avoid contact from the wheel to control arms or other components, and to prevent over centering of the tierod.

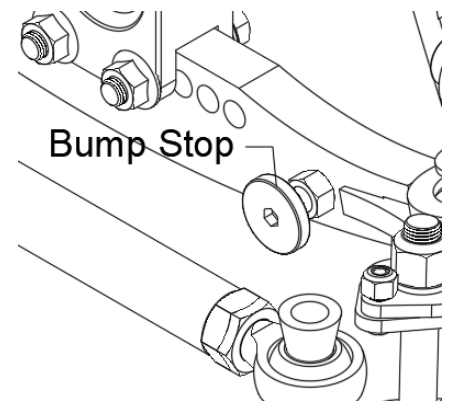
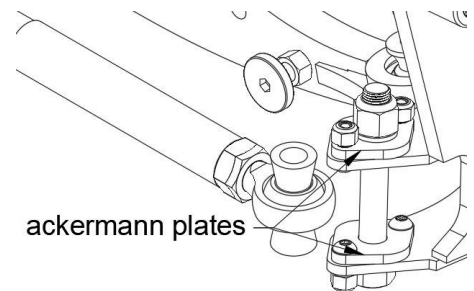
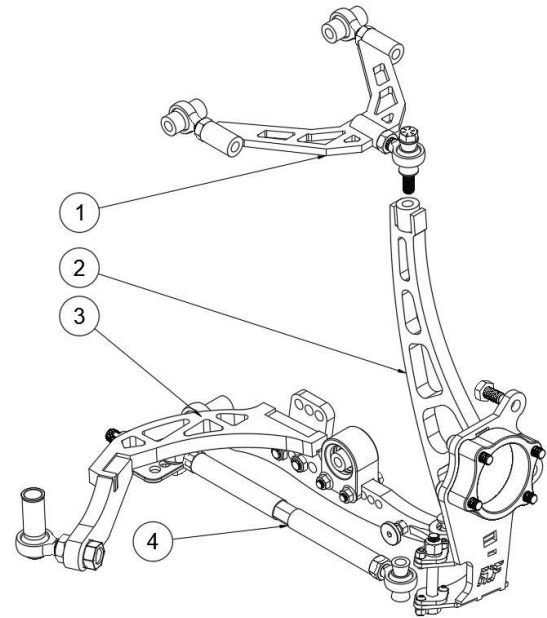
### Alignment Recommendations

**Caster** 5.5-6.5 + or - .5

**Camber** -4 + or -1.0

**Toe** 0-1/8<sup>th</sup> out

**Wheel size recommendation** 18x9 +10 offset (close to this size will work well)



**For Racing  
Use only**



**Not For  
Road Use**

Must be installed by a licensed professional



fdfraceshopcustomerservice@gmail.com

+1(613)243-8859