

# Installation Guide

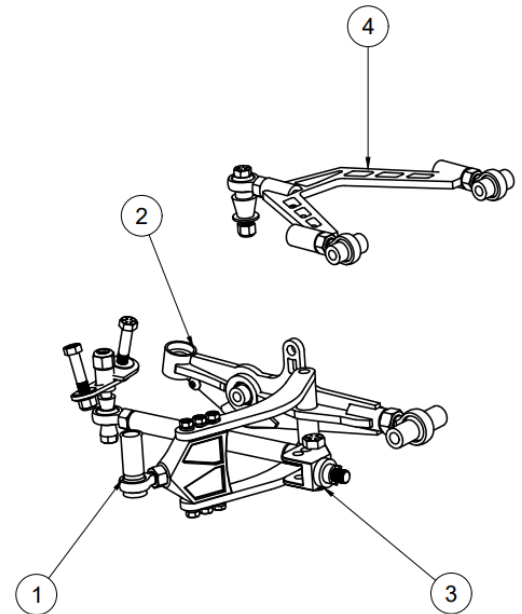


## 350Z REGULAR MANTIS KIT

Fully Assembled view of the 350z mantis kit is shown for the left side of the car

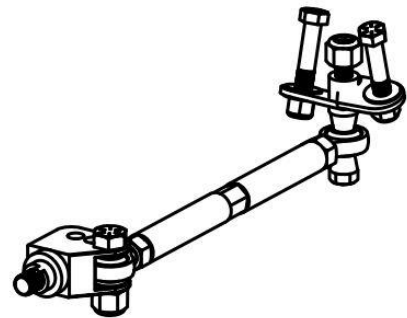
- 1- Compression arm
- 2- Lower control arm
- 3- Tierod assembly
- 4- Upper control arm

\*Bolt check regularly, take note of the orientation of all the components in this view\*



-**Helicopter (knuckle adaptor)** may require some removal of material on the knuckle, remove material until the 2 plates sit flat. Use the steel conical spacer from the radius arm to fill the counter sunk hole in the knuckle.

-**Offset Rack spacer**, if the steering rack is in the factory position, the rack spacer is designed to move the inner tierod forward 32mm. (the other 2 holes are only for if the rack is relocated) use red locktite on the rack bolt and torque to factory spec.



### Alignment Recommendations

**Caster** 8.5 + or - .5

**Camber** -5 + or -1.0

**Toe** 0-1/8<sup>th</sup> out

Wheel size recommendation

18x9 +10 offset (close to this size will work well)

**For Racing  
Use only**



**Not For  
Road Use**

Must be installed by a licensed  
professional



fdfraceshopcustomerservice@gmail.com  
+1(613)243-8859