

Nissan 350Z Mega Mantis Angle Kit

*Always use certified licensed technician/s for installation

Introduction:

- This kit will fit Nissan 350Z/Infiniti G35
- Drift car angle kit is designed to increase the steering angle of the front wheels, allowing for greater maneuverability during drifting. It helps the car achieve higher steering angles and smoother transitions, essential for drifting techniques.
- Tools and equipment required for installation:
Floor Jack, Jack Stands, Wrenches, Sockets, Plier, Torque Wrench, Thread Locker

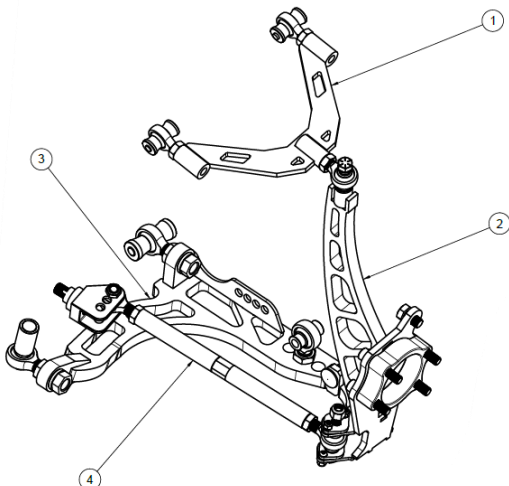
Step 1: Preparation

- Ensure the car is parked on a level surface and the wheels are chocked to prevent accidental movement during installation.
- Safety First - Disconnect the negative terminal of the battery to avoid any electrical accidents while working on the car. In addition to chocking the wheels and disconnecting the battery, it is essential to wear appropriate safety gear and clothing, including closed-toe shoes, long sleeves and safety glasses.
- Lift the car using a jack or Hoist making sure to position it securely under the recommended lifting points. Then, place the jack stands for additional support before beginning any work. Double-check that the car is stable and won't shift while you work.

Step 2: Front Suspension removal

- Remove the wheels, brakes, and any components obstructing access to the front suspension.
- Unbolt the factory suspension components, such as tie rods and control arms. Be cautious not to damage any surrounding parts during this process.
- Once the factory components are removed, the stock steering knuckle should be taken out to make way for the new angle kit.

Step 3: Angle Kit Installation

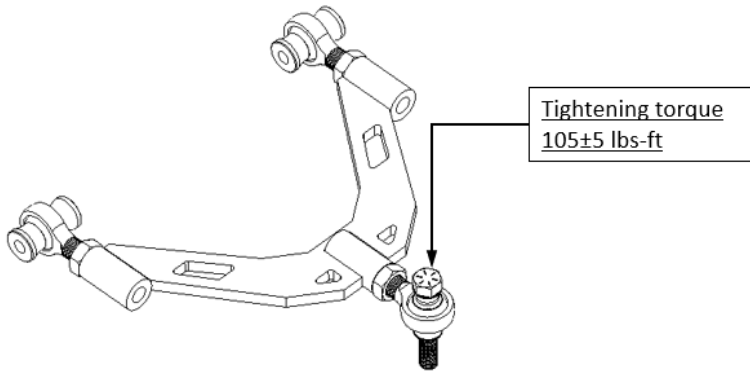


Fully assembled view of FDF Mega Mantis Angle Kit for Nissan 350Z/Infiniti G35 is shown for the right-hand side of the car.

1. Upper Control Arm sub-assy (Common for LH & RH side)
2. RH side Knuckle sub-assy
3. RH side Lower Control Arm sub-assy
4. Tie Rod sub-assy (Common for LH & RH side)



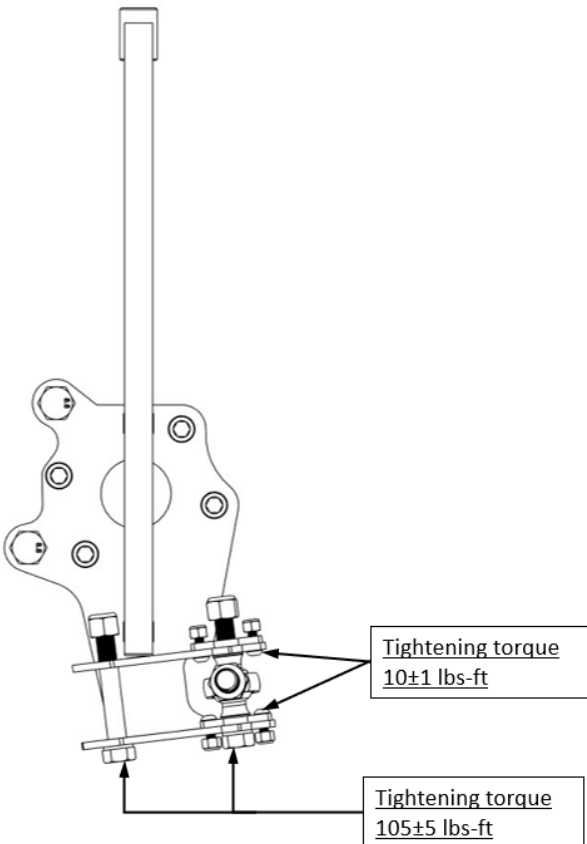
Installing the Upper Control Arms



FDF Mega Mantis Upper Control arms for Nissan 350Z/Infiniti G35 are common for Left-hand and Right-hand side of the car.

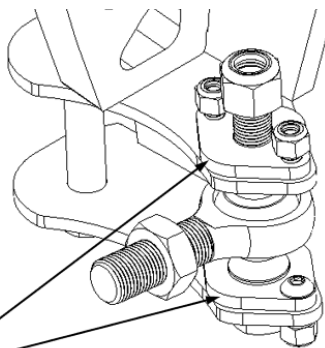
- The Spacers will be zip-tied to the Heim Joints before shipping. Make sure to assemble the spacers in the car in the same way they are shipped.
- Make sure all bolts are torqued properly.

Installing the Knuckle



FDF Mega Mantis Knuckle for Nissan 350Z/Infiniti G35 is different for Left-hand and Right-hand side of the car. The Knuckle shown in the image is for Right-hand side of the car.

- The Wheel Bearing bolts and Brake caliper bolts will be zip-tied in position before shipping.
- Make sure all the bolts are torqued properly.



Ackermann Plates

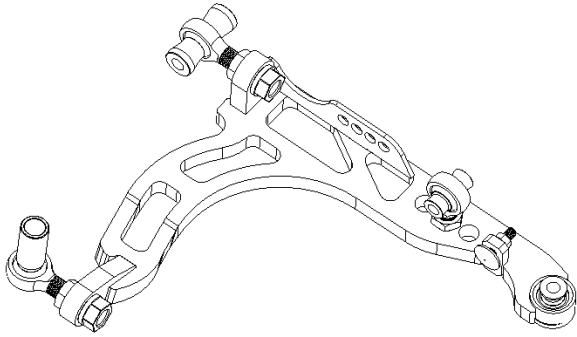
Adjusting the Ackermann: FDF Mega Mantis Angle kit comes with adjustable Ackermann Plates. The kit will come with zero Ackermann plates installed and include +2/-2 options that can be changed out. Ackermann is the difference in angle measured at full lock.

Example: with 0 Ackermann plates installed, the angle of the car will be 60° on the lead wheel and 60° on the trailing wheel.

*Please note that alignment settings, rack position and other variables can affect the Ackermann curve resulting in differences from chassis to chassis, make adjustments according to your individual setup.

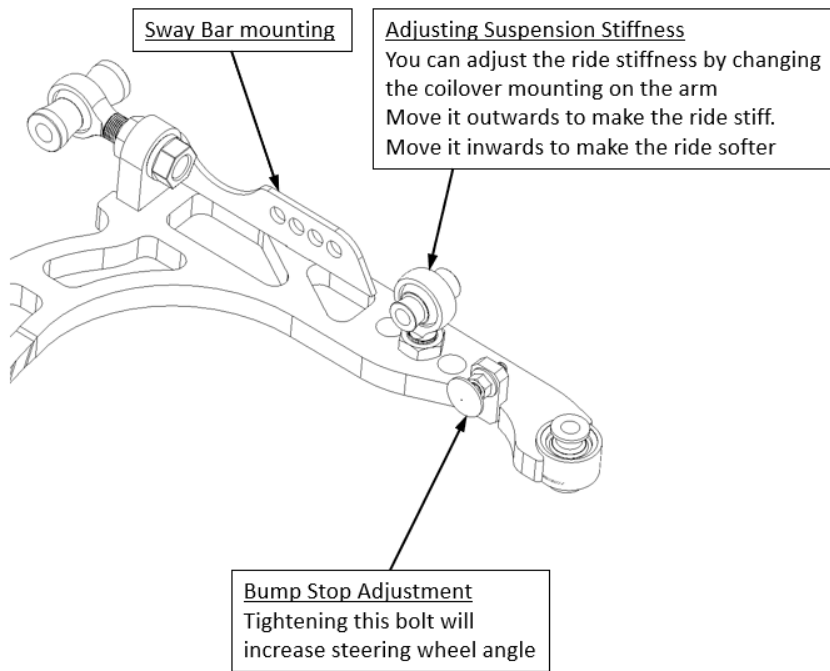


Installing the Lower Control Arm



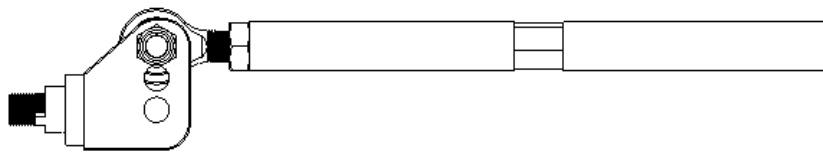
FDF Mega Mantis Lower Control Arm for Nissan 350Z/Infiniti G35 is different for Left-hand and Right-hand side of the car. The Lower Control Arm shown in the image is for Right-hand side of the car.

- The Spacers will be zip-tied to the Heim Joints before shipping. Make sure to assemble the spacers in the car in the same way they are shipped.
- Make sure all bolts are torqued properly.

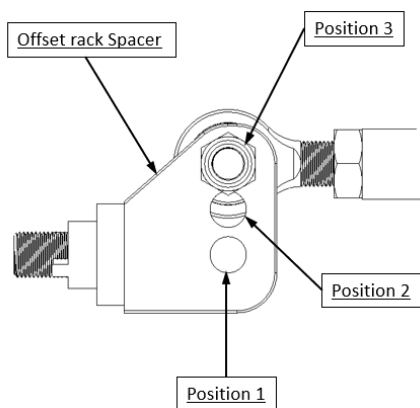


- While adjusting bump stop, make sure tie rod is not binding. Also, check for wheel clearance between car body and suspension components through the extent of suspension travel and limit the steering wheel angle to avoid any interference.

Installing the Tie Rod with Offset rack spacer



FDF Mega Mantis Tie rod sub-assy. for Nissan 350Z/Infiniti G35 is different for Left-hand and Right-hand side of the car. The tie rod sub assy. shown in the image is for Right hand side of the car.



Recommended position for installing offset rack spacer

- Position 3 (32mm offset): Install the tie rod in this position with OEM rack (without any modification)
- Position 2 (16mm offset): Install the tie rod in this position for 16mm offset.
- Position 1 (0mm offset): Install the tie rod in this position if rack is already relocated.



Step 4: Reassembly

- Double-check all connections and fastenings for any loose or improperly secured components.
- Pay attention to every bolt and nut to prevent any potential issues during drifting.
- Reinstall the wheels and brakes. Ensure brake lines are of sufficient length while turning wheels both sides lock to lock (no tension or potential breaking).
- Lower the car back to the ground.

Step 5: Alignment and Adjustment

Recommended Alignment Specifications: -

- Caster +5.5° to +6.5°
- Camber -3.5° to -4°
- Toe 0 to 1/8th out
- Wheel size recommendation 18 x 9 +10 offset

These are only the recommended alignment specs. You can set up based upon individual preference.

- Do not exceed the Heim joint adjustments. Each Heim joint should have a minimum of 1 to 1.5 times the diameter of the Heim joint. (For Example: a ¾" Heim joint needs to have approx. ¾" to 1 1/8" thread engagement inside the arm, this is 12-18 threads)
- After installing the angle kit, it is crucial to get a professional alignment at a specialized shop that understands drifting setups. They will align the car to optimal angles for drifting and ensure the best possible handling and response.
- Additionally, adjustments to the angle kit components might be necessary to fine-tune the car's steering and suspension to your preferred drifting style. Make these adjustments as needed while considering safety and performance.

Step 6: Test Drive

- Before fully utilizing the drift car, take it for a test drive in a safe area to assess how it responds to the angle kit installation. Pay attention to any issues, unusual noises, or handling quirks that may require further adjustments.
- Take notes of any issues and adjustments needed during the test drive. Address these concerns before engaging in more aggressive drifting maneuvers.

Conclusion:

Recap the installation process and emphasize the importance of professional alignment after installing an angle kit. Always remember to prioritize safety during any car modifications and always use certified licensed technician for your installations. Bolt check regularly, recommendation is before each racing event.

Thank you for choosing FDF angle kit to enhance your drifting experience.

Stay connected with FDF Raceshop for new product releases.

Follow us on Facebook, Instagram and YouTube

 <https://www.facebook.com/fdfaceshop/>

 <https://www.instagram.com/fdfaceshop/>

 <https://www.youtube.com/@FDFaceshop>

