



**Pay Energy 4 Channel Pay Center**  
 PE 101-4W/P Wall Mount /Pedestal  
**Technical Data**



**Main Features**

4 Channel Pay station  
 payment Processing for charging four cars  
 simultaneously  
 Intuitive usage using 4" touch screen  
 Powered by Nayax VPOS Touch allowing  
 complete telemetry and cashless solution  
 Accepts all cashless payments methods

- Debit and Credit Cards
- Mobile, NFC Payments
- Prepaid cards and Closed environment solutions
- Swipe, Contact and Contactless



**Electrical data**

**Input Voltage:** 110-250 VAC, Single phase  
**Output :** 4 EV Charger Channel

**Environmental**

Approved for both Indoor & Outdoor installations.  
 Operating temperature: (-25°C) to (+55°C)  
 Non-Operating temperature: (-30°C) to (+70°C)  
 Humidity: Up to 100% non-condensing  
 IP55, weather and water proof

**Supported Payment Schemes**

Contact Card: EMV Level 1 + Level 2 - Certified  
 Contactless: EMV Level 1 - Certified  
 Contactless: EMV Level 2:  
 Visa PayWave EMV + Mag Stripe  
 MasterCard PayPass EMV + Mag Stripe  
 Magnetic Stripe Card: Tracks 1,2,3 - JIS II  
 Other Cards Supported: NFC, MIFARE, HID-iClass, FeliCa

**Safety and Certification:**

UL Listed  
 Over power protection

**Dimensions / Weight**

WxHxD: 6 x 16 x 14 inches  
 Weight: 20 lbs





## Pay Energy 4 Channel Pay Center PE 101-4W/P Wall Mount /Pedestal Features:

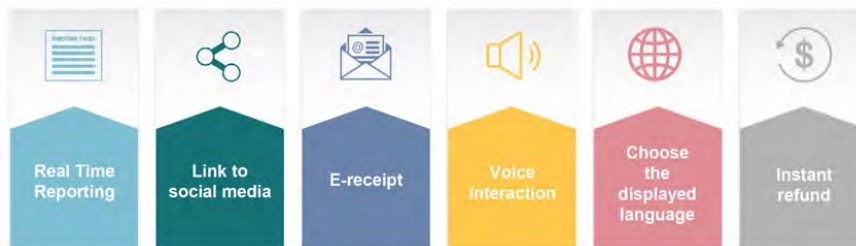
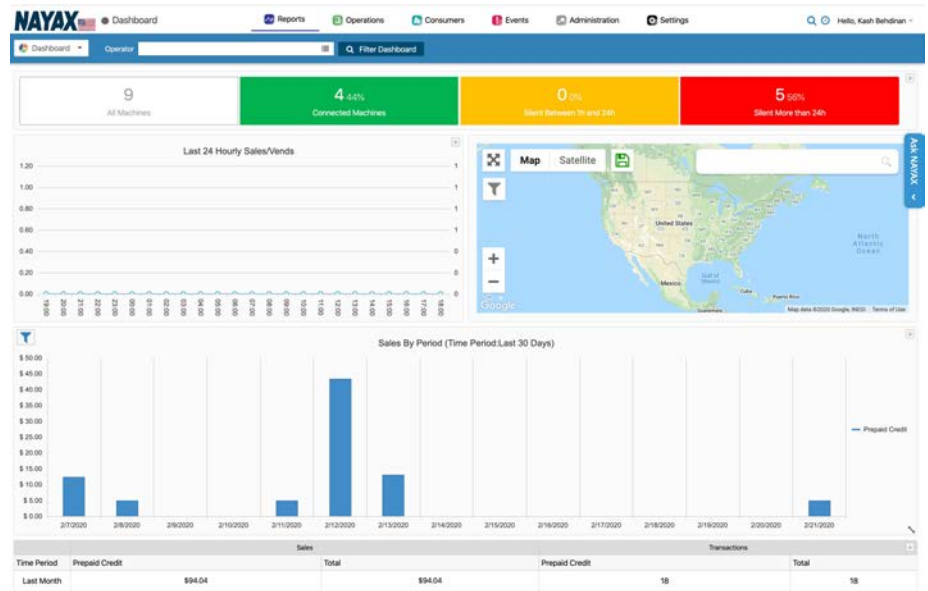


## Panel Feature

- Customized Panel Design and pricing
- Charger Indication Status
- Comparison options
- Marketing and Advertisement
- Low cost
- Fully assembled Box, easy & ready to install

## Analytics Portal

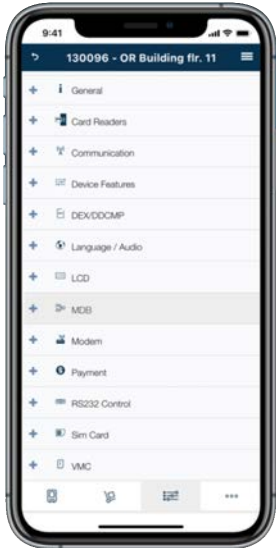
- Advanced analytical tool that shows the big picture
- Drill down to individual transactions, real-time Charging usage & rates
- Comparison options
- Design and schedule Business reports to a mailing list



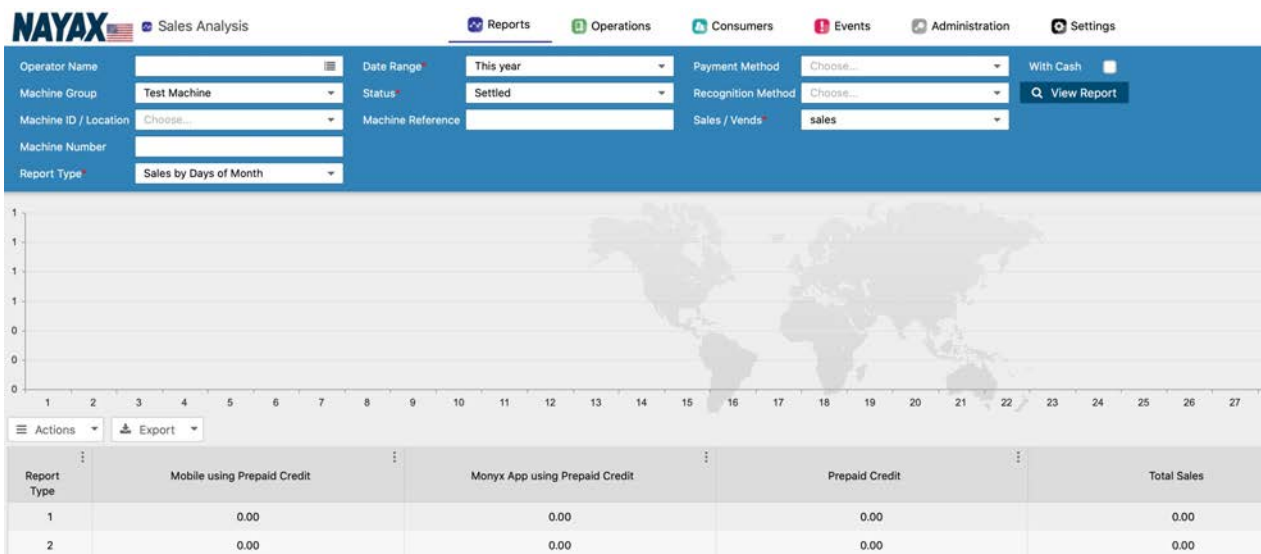


## Pay Energy 4 Channel Pay Center PE 101-4W/P Wall Mount/Pedestal

### Features:



- Compatible with all smartphones and tablets
- Intuitive dashboard
- Manage logic alert thresholds
- Integrate into 3rd party utility Demand Response Management System (DRMS)
- Plug and Play Cellular networked solutions
- Integrated universal reader for allowing open cashless payment solutions
- Easy service - modular design
- Reporting: usage, accounting, billing and machine monitoring
- delivered monthly to registered users
- OTA software updates
- Physical advertising space







## Pay Energy 8 Channel Pay Center PE 102-8Y\_W/P Wall Mount/Pedestal Technical Data

### Main Features

8 Channel Pay station  
payment Processing for charging eight cars  
simultaneously  
Intuitive usage using 7" touch screen  
Powered by Nayax VPOS Touch allowing  
complete telemetry and cashless solution  
Accepts all cashless payments methods

- Debit and Credit Cards
- Mobile, NFC Payments
- Prepaid cards and Closed environment solutions
- Swipe, Contact and Contactless



### Electrical data

**Input Voltage:** 110-250 VAC, Single phase  
**Output :** 4 EV Charger Channel

### Environmental

Approved for both Indoor & Outdoor installations.  
Operating temperature: (-25°C) to (+55°C)  
Non-Operating temperature: (-30°C) to (+70°C)  
Humidity: Up to 100% non-condensing  
IP55, weather and water proof

### Supported Payment Schemes

Contact Card: EMV Level 1 + Level 2 - Certified  
Contactless: EMV Level 1 - Certified  
Contactless: EMV Level 2:  
Visa PayWave EMV + Mag Stripe  
MasterCard PayPass EMV + Mag Stripe  
Magnetic Stripe Card: Tracks 1,2,3 - JIS II  
Other Cards Supported: NFC, MIFARE, HID-iClass, FeliCa

### Safety and Certification:

UL Listed  
Over power protection

### Dimensions / Weight

WxHxD: 12 x 12 x 19 inches  
Weight: 40 lbs





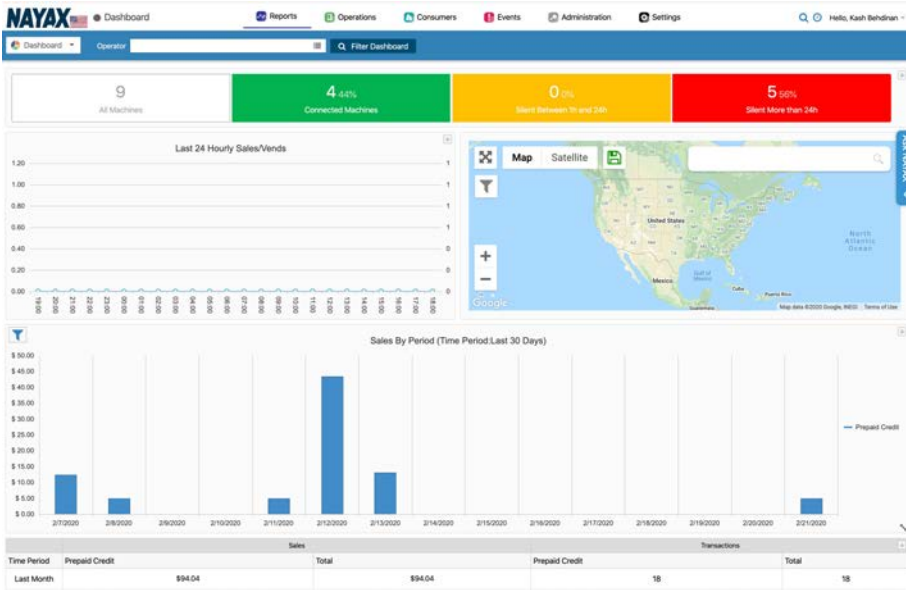
# Pay Energy 8 Channel

## PE 102-8Y\_W/P Wall Mount/Pedestal

### Features

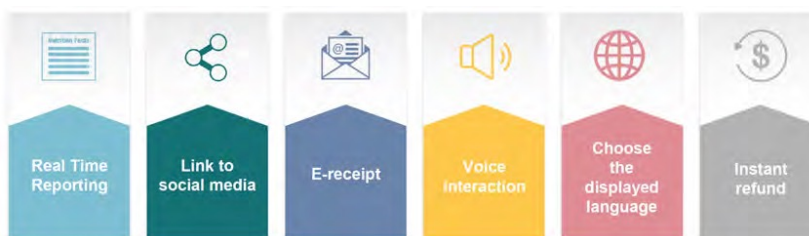
### Panel Feature

- Customized Panel Design and pricing
- 8 Channel Control
- Charger Indication Status
- Comparison options
- Marketing and Advertisement
- Low cost
- Fully assembled Box, easy & ready to install



### Analytics Portal

- Advanced analytical tool that shows the big picture
- Drill down to individual transactions, real-time Charging usage & rates
- Comparison options
- Design and schedule Business reports to a mailing list

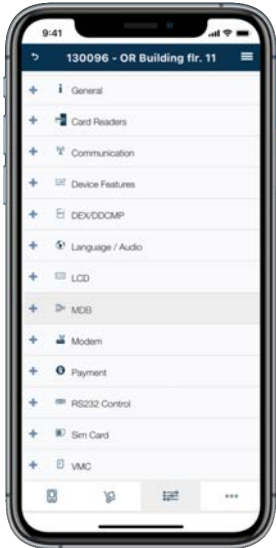




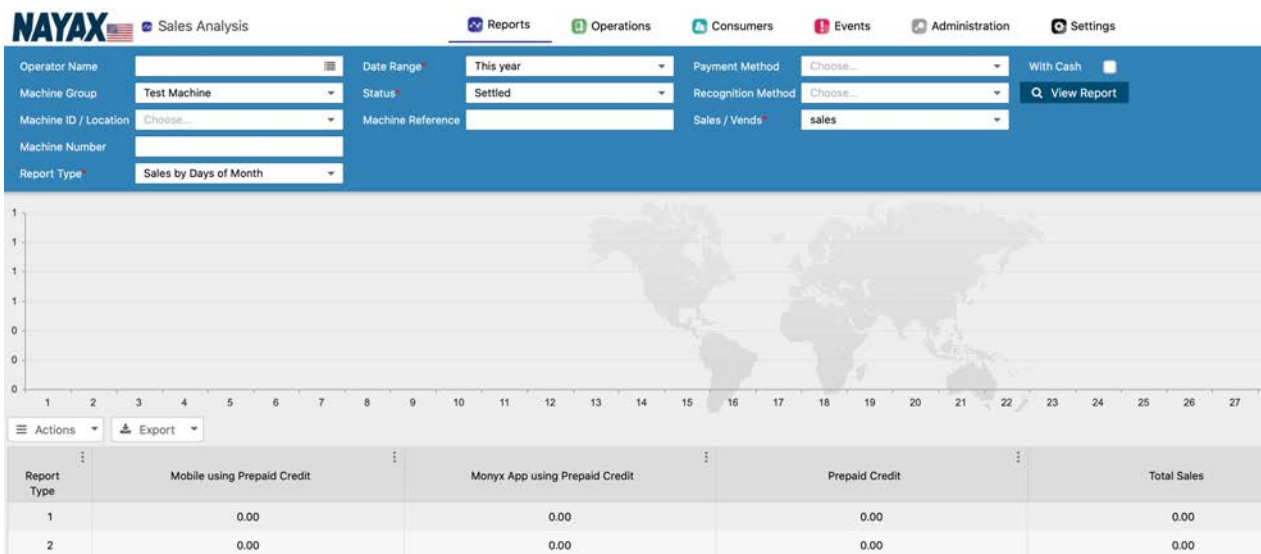
## Pay Energy 4 Channel Pay Center

PE 102-8Y\_W/P Wall Mount/Pedestal

### Features:



- Compatible with all smartphones and tablets
- Intuitive dashboard
- Manage logic alert thresholds
- Integrate into 3rd party utility Demand Response Management System (DRMS)
- Plug and Play Cellular networked solutions
- Integrated universal reader for allowing open cashless payment solutions
- Easy service - modular design
- Reporting: usage, accounting, billing and machine monitoring
- delivered monthly to registered users
- OTA software updates
- Physical advertising space





## Pay Energy 4 Channel Junction Box

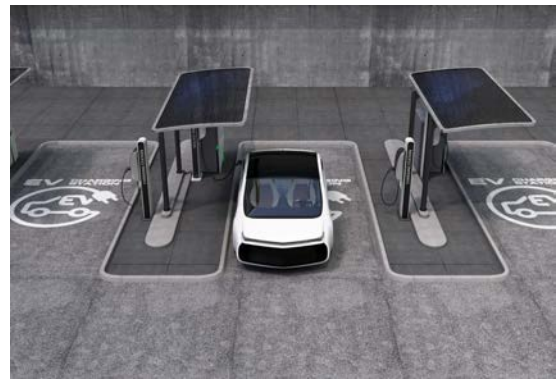
PE 103-4J

### Technical Data

#### Main Features

4 Channel Junction Box  
Drive up to four 32 Amp Charger

- Features a stylish, modern design that safely houses more components in a smaller space
- light grey over an industry exclusive electrophoretic dip-coat powder paint
- Easy Installation of mounting panel



#### Electrical data

**Input Voltage:** 220 VAC, 160 Amp Dual phase

**Output :** 4 EV Charger , 32 Amp

#### Environmental

Approved for both Indoor & Outdoor installations.

Operating temperature: (-25°C) to (+55°C)

Non-Operating temperature: (-30°C) to (+70°C)

Humidity: Up to 100% non-condensing  
Type 3R, weather and water proof

#### Safety and Certification:

UL Listed

Over power protection

#### Dimensions / Weight

WxHxD: 6 x 16 x 14 inches

Weight: 150 lbs





## Energy Management and Monitoring

PE 105-EMV -QXX

### Technical Data

## Main Features

### Energy management

- Demand Monitoring
- Up to 4 Channel Current, Energy Monitoring
- Charger On / OFF Control Based on Demand
- Energy Consumption Monitoring
- Charger ON /OFF Monitoring and Remote Control
- Easy Installation and compatible with all Payenergy pay centers
- Cloud Storage of data



### Electrical data

**Input Voltage:** 110-250 VAC, Single phase

### Environmental

Approved for both Indoor & Outdoor installations.

Operating temperature: (-25°C) to (+55°C)  
Non-Operating temperature: (-30°C) to (+70°C)

Humidity: Up to 100% non-condensing  
Type 3R, weather and water proof

### Safety and Certification:

UL Listed

Over power protection

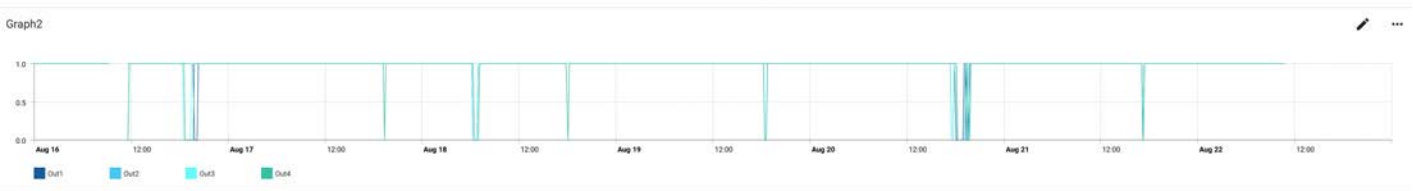
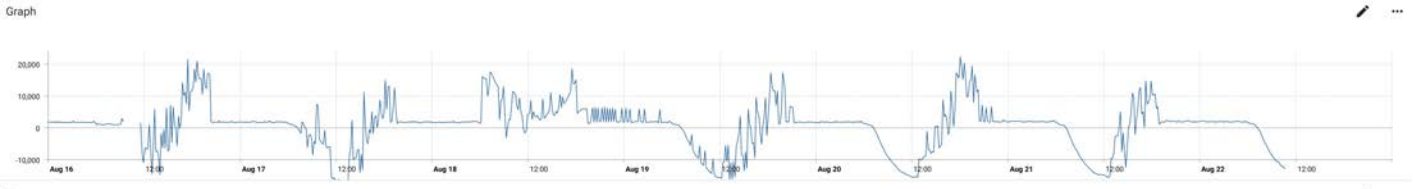
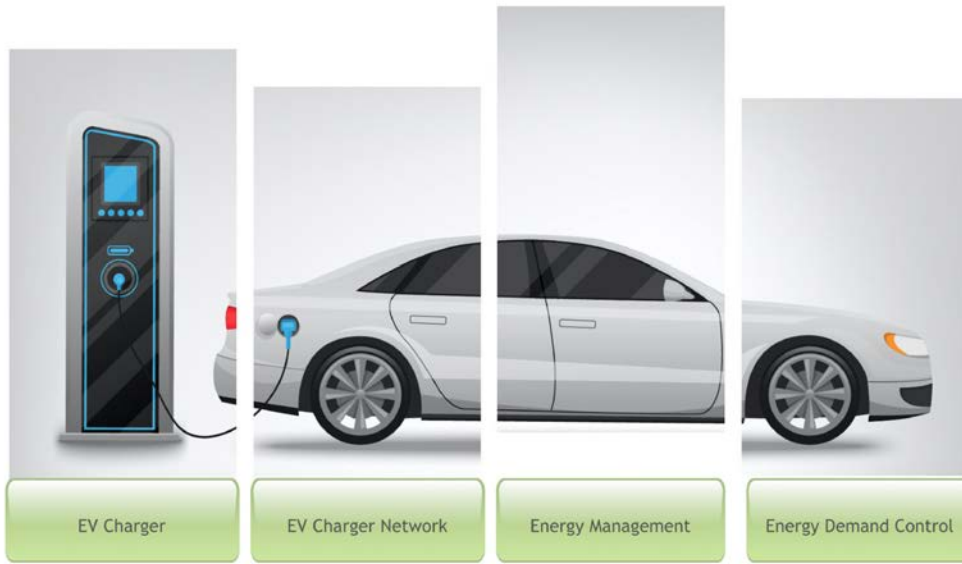
### Dimensions / Weight

WxHxD: 6 x 16 x 14 inches

Weight: 150 lbs



## Energy Management and Monitoring PE 105-EMV





# Secure Remote Access & Data Solution



## Charging Network



**Simple setup** Log into the PayEnergy platform  
Easy steps to connect Pay energy Pay centers to Cloud

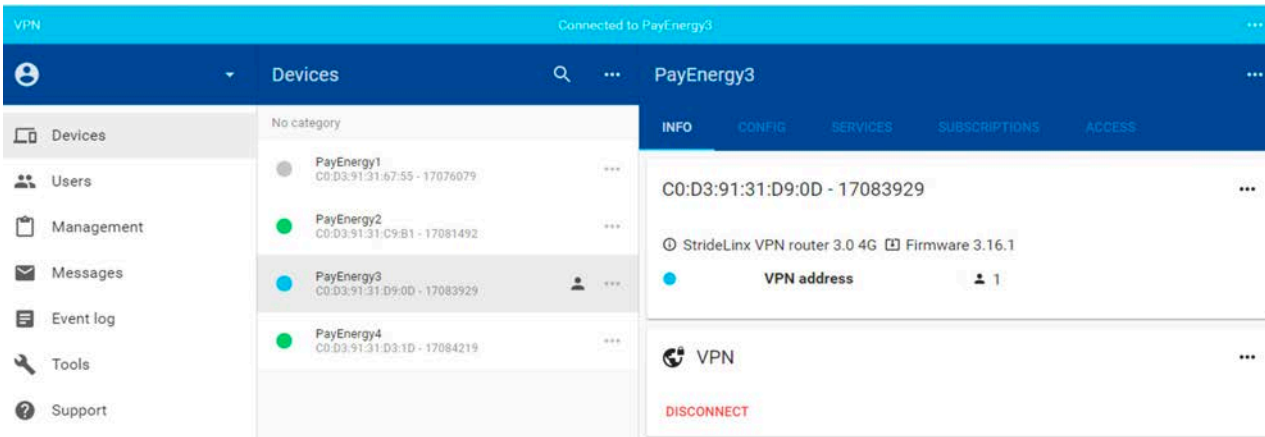


**Link up wirelessly** In addition to the wired option  
Pay Energy remote access and data solution offers 4G LTE and WiFi router versions. The wireless models provide WAN redundancy/failover to enhance connection reliability. The 4G LTE model allows customers to access remote locations that do not have internet access.



**Fortified login**  
Stronger platform security is provided through the use of two-factor authentication, requiring an additional password using time-based encryption

[www.payenergy.com](http://www.payenergy.com)





**REMOTE ACCESS  
ANYTIME/ANYWHERE**



**Web Based Platform**  
Access your machines from anywhere in the world directly through your browser.



**Customizable user permissions and event log** User permissions allow you to control who has access to platform resources including devices, data, and company info. The User Event Log tracks logins, connection info, billing modifications, and many other activities for an accurate account history.



**Easily log, monitor and share data with the PayEnergy Platform**  
Let the PayEnergy platform log and monitor your data. Add cloud logging to your system to have data readily available anytime or anywhere!



**PayEnergy Cloud on the Go**  
with Mobile VPN The info you need is at your fingertips with iOS and Android apps. From your smartphone easily monitor the status of installed Chargers, connected Chargers and status of charging

[www.payenergy.com](http://www.payenergy.com)



## Track system performance with easy cloud data logging



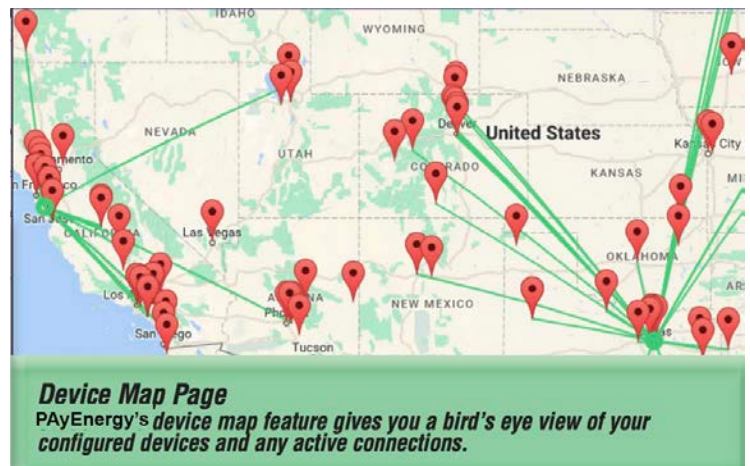
PayEnergy makes it easy to connect to your Charger or system remotely.

Whether you prefer to connect via your Windows computer, or if you need access on the go with mobile devices, Pay Energy has the secure connection option for you.

And don't forget the payEnergy platform allows for unlimited users, unlimited concurrent client connections and unlimited mobile connections so you can grant access to anyone you choose without limitations.

Remote access adds value to your bids and can be used as a service warranty revenue stream.

With Payenergy Platform you get the options you need...for less



[www.payenergy.com](http://www.payenergy.com)



