



*PE 250A*

**THE BEST EV CHARGER PAYSTAND**



**Now Powered by two 19.2KWH 80 Amp Level2 Charger**

# PE 250A

## PayEnergy Dual Level2 Pay Stand PE 250A

### Technical Data

### Main Features

Dual Level2 Charger up to two 19.2 KWH  
Cashless EV charger with option to expand for  
additional Two External Level2 or Level 3  
Fast DC Charger.

payment Processing for charging up to 4 cars  
simultaneously

Intuitive usage using 7" touch screen

Powered by Nayax VPOS Touch allowing  
complete telemetry and cashless solution

Accepts all cashless payments methods

- Debit and Credit Cards
- Mobile, NFC Payments
- Prepaid cards and Closed environment solutions
- Swipe, Contact and Contactless



The Dual electric vehicle charger arrives ready to plug in for use into a 240-Volt receptacle. Most Electric Vehicle batteries will be charged from zero to full in less than 3.5-hours, leaving plenty of time to delay your charge by 2-8-hours with the easy-to-use time of charge delay feature on the unit.





# PE 250A

## Electrical data

**Input Voltage:** 110-250 VAC, Single phase

**Output :** 2 Charger Channel up to 19.2KWH

## Environmental

Approved for both Indoor & Outdoor installations.

Operating temperature: (-25°C) to (+55°C)

Non-Operating temperature: (-30°C) to (+70°C)

Humidity: Up to 100% non-condensing  
IP55, weather and waterproof



## Supported Payment Schemes

Contact Card: EMV Level 1 + Level 2 - Certified

Contactless: EMV Level 1 - Certified

Contactless: EMV Level 2:

Visa PayWave EMV + Mag Stripe

MasterCard PayPass EMV + Mag Stripe

Magnetic Stripe Card: Tracks 1,2,3 - JIS II

Other Cards Supported: NFC, MIFARE, HID-iClass, FeliCa

## Safety and Certification:

UL Listed

Overpower protection

## Dimensions / Weight

WxHxD: 12\*50\*8 inches

Weight: 80 lbs



# PE 250A

PAYENERGY PE 250 is the smartest, quickest and safest Cashless Level 2 destination charging solution for fleets, public operators, commercial facilities, workplaces, and multifamily residences. PE 250 utilizes the fastest Level 2 EV chargers to deliver future-proof flexibility as well as advanced safety and protection. With connectivity and digital functionality, the PE250 is built to deliver optimized charging today and well into the future.



#### Flexible, high quality design

- 40/80 A model for commercial and fleet demands
- Universal PHEV and BEV charging
- UL safety certified with the highest protection
- Built in revenue grade meter supporting load management



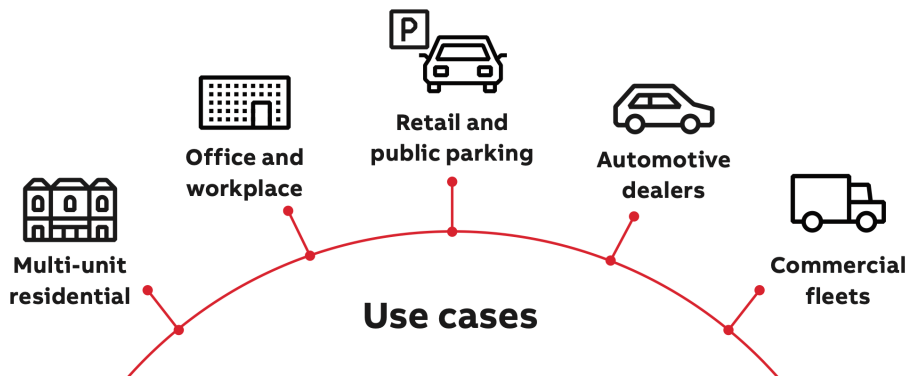
#### Easy siting and installation

- Designed for installation in less than 30 min
- Fastest remote commissioning for multi-charger sites
- Tailored pedestal option available
- Rugged NEMA Type 4 enclosure for any indoor or outdoor location



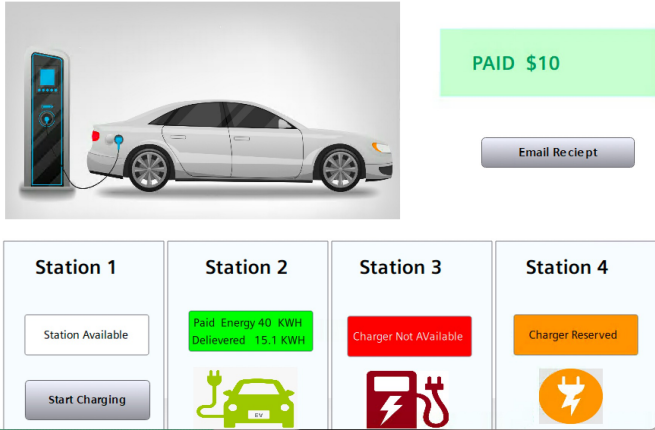
#### Smart business integration

- OCPP integration with any charging network
- Multiple connectivity and authentication options
- Intuitive app for managing charging sessions and usage
- Dedicated web portal for charger and data management, ideal for large installations



## Panel Feature

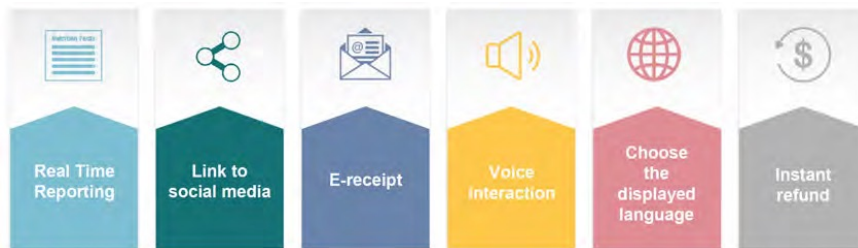
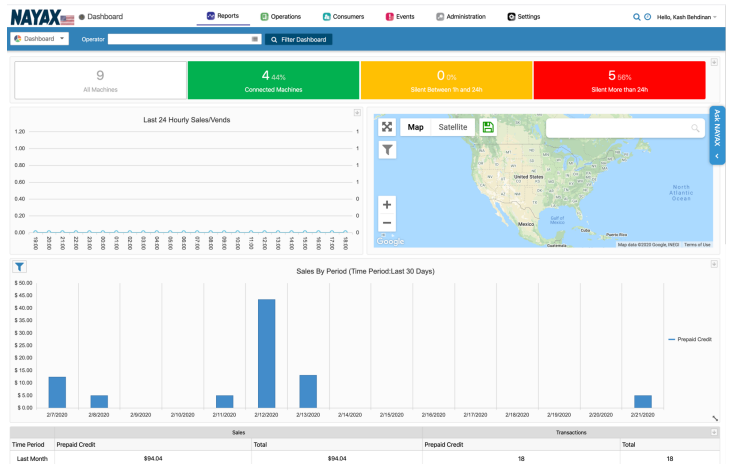
please process the Payment and Select a Station to start the Charging



- Customized Panel Design and pricing
- Charger Indication Status
- Comparison options
- Marketing and Advertisement
- Low cost
- Fully assembled Box, easy & ready to install

## Analytics Portal

- Advanced analytical tool that shows the big picture
- Drill down to individual transactions, real-time Charging usage & rates
- Comparison options
- Design and schedule Business reports to a mailing list







### Web Based Platform

Access your machines from anywhere in the world directly through your browser.



**Customizable user permissions and event log** User permissions allow you to control who has access to platform resources including devices, data, and company info. The User Event Log tracks logins, connection info, billing modifications, and many other activities for an accurate account history.



### Easily log, monitor and share data with the PayEnergy Platform

Let the PayEnergy platform log and monitor your data. Add cloud logging to your system to have data readily available anytime or anywhere!



### PayEnergy Cloud on the Go

with Mobile VPN The info you need is at your fingertips with iOS and Android apps. From your smartphone easily monitor the status of installed Chargers, connected Chargers and status of charging

## Remote Access & Data Solution

### Track system performance with easy cloud data



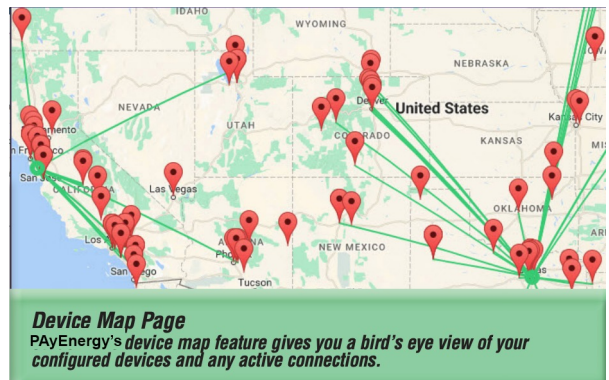
PayEnergy makes it easy to connect to your Charger or system remotely.

Whether you prefer to connect via your Windows computer, or if you need access on the go with mobile devices, Pay Energy has the secure connection option for you.

And don't forget the payEnergy platform allows for unlimited users, unlimited concurrent client connections and unlimited mobile connections so you can grant access to anyone you choose without limitations.

Remote access adds value to your bids and can be used as a service warranty revenue stream.

With Payenergy Platform you get the options you need...for less





# Energy Management and Monitoring

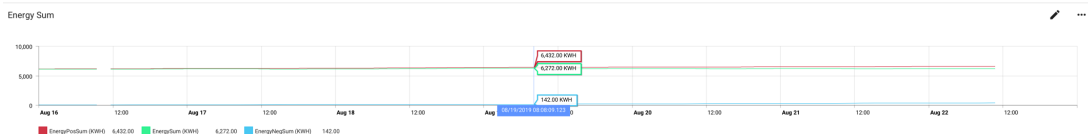
## PE 250A-W/L-HP- E

### Technical Data

## Main Features

### Energy management

- Demand Monitoring
- Up to 2 Channel Current, Energy Monitoring
- Charger On / OFF Control Based on Demand
- Energy Consumption Monitoring
- Charger ON /OFF Monitoring and Remote Control
- Easy Installation and compatible with all PayEnergy pay centers
- Cloud Storage of data







|                         |                | PE-250A<br>Dual – 40 Amp Charger   |            | PE-250A HP<br>Dual -80 Amp Charger |               |
|-------------------------|----------------|--|------------|------------------------------------|---------------|
| Model Name              |                | PE250A-W   | PE250A-L   | PE250A- HP-W                       | PE250A-HP-L   |
| Communication           |                | WIFI   | LTE        | WIFI                               | LTE           |
| Input                   | Input Rating   | 250-240Vac   |            |                                    |               |
|                         | Frequency      | 60 hz  |            |                                    |               |
|                         | Input Current  | 50 Amp   |            | 100Amp                             |               |
| Output                  | Output Current | 50 Amp   |            | 100Amp                             |               |
| Operating Temperature - |                | 22°F~122°F(-30°C~50°C)   |            |                                    |               |
| Humidity                |                | Max. 95% RH  |            |                                    |               |
| IP Level                |                | Ip 65  |            |                                    |               |
| Display Size            | 4 Inch         | PE250A-W-4   | PE250A-L-4 | PE250A- HP-W-4                     | PE250A-HP-L-4 |
|                         | 7 Inch         | PE250A-W-7   | PE250A-L-7 | PE250A- HP-W-7                     | PE250A-HP-L-7 |
| Dimension(WxDxH)        |                | 50H” * 12W” * 8D”  |            |                                    |               |
| Charging Outlet         |                | 10ft charging cable  |            |                                    |               |
| Multiple Protection     |                | Over current, Under voltage, Over voltage, Residual current, Surge protection, Multiple Protection Short circuit, Over temperature, Ground fault, Current leakage protection |            |                                    |               |
| Certificate             |                | UL508A-UL 2594, UL2231-1/-2 , FCC ,  |            |                                    |               |
| Energy Management       |                | Optional Power Measurement and Monitoring  |            |                                    |               |

## Charger Specification

|   |   |
|---|---|
| Charging type                             | Level 2 (mode 3)  |
| AC input / output power and current       | 9.6 kW / 40 A, 19.2 kW / 80 A   |
| Recommended breaker                       | 50 A (for 40 A unit); 100 A (for 80 A unit)   |
| Input / output voltage                    | 208/240 VAC, 50/60 Hz   |
| Network type                              | Single phase / split phase (TT, TN)   |
| Cable type / Cable storage                | SAE J1772, type 1 cable, 7.6 m (25 ft)<br>Cable is wrapped around charger and front holster inlet |
| Protection                                | Overcurrent, overvoltage, undervoltage, CCID20, integrated surge protection                       |
| Ground fault protection                   | Integrated 20 mA AC   |
| Overvoltage category                      | III   |
| Energy metering                           | Revenue grade energy meter Class B ( $\pm 2\%$ )  |
| Mobile communication with nano SIM socket | 4G, LTE, WCDMA  |
| Available configurable contacts           | 1 input, 1 output   |

### User interface

|                                      |  |
|--------------------------------------|--|
| Connectivity                         | Ethernet (RJ45) with daisy-chain Ethernet option, Wifi, Bluetooth, Modbus RTU RS485, Modbus TCP/IP, 4G                 |
| User authentication                  | ABB RFID card (1 card included) or ChargerSync™ app or portal  |
| User interface / Installer interface | ChargerSync™ app or portal / TerraConfig app and portal for setup  |
| Communication protocols              | OCPP 1.6J, Modbus RTU RS485 (energy meter or local controller connection), Modbus TCP/IP (local controller connection) |
| Status indication                    | 5 LED's (power / connectivity / authorization / charging / error)  |

### Configuration

|                           |  |
|---------------------------|--|
| Software update           | OCPP 1.6J, ChargerSync™ portal or app, Terraconfig app   |
| Control and configuration | OCPP 1.6J, ChargerSync™ portal or app, Terraconfig app, display wakeup functionality via touch, current limit by rotary switch |

### General characteristics

|                             |  |
|-----------------------------|--|
| Enclosure rating            | Indoor and Outdoor, NEMA 4; IP65, IK10                   |
| Operating altitude (max)    | 4000 m (13,123 ft)                                       |
| Operating temperature range | -30 °C to +55 °C (-22 °F to +131 °F); derating may apply |
| Storage temperature range   | -40 °C to +85 °C (-40 °F to +185 °F)                     |
| Mounting                    | Wall or floor using a pedestal                           |
| Dimensions H x W x D        | 400 x 230 x 125 mm (15.75 x 9.06 x 4.92 inches)          |
| Weight 40 / 80A             | 10.8 kg / 11.8 kg (23.80 lb / 26.01 lb)                  |

### Certification and standards

|                     |   |
|---------------------|---|
| Safety standards    | UL 2594, UL 2231-1, UL 2231-2, UL 1998, CSA C22.2. NO.280, NMX-J-667-ANCE |
| Codes and standards | FCC Part 15 Class B, ENERGY STAR  |
| Certification       | SGS   |
| Warranty            | 24 months   |

## Mechanical Drawing

