

*Then came the storm.
The wind blew from the South East.
Waves as big as glassy mountains
came before it
And lightning and thunder
And always the howling, moaning, whistling wind.*

Grade Level: 1st–3rd grade
Time Required: 2 45-min. class periods

Objective:

Students paint a storm, and learn to convey mood, drama and movement by use of a variety of brush strokes.

National Core Arts Standards

Creating: # 2, 3
Presenting/Producing: #5, 6
Responding: #7, 8, 9
Connecting: #11

<http://www.nationalartsstandards.org/>

Vocabulary:

Stroke
Movement
Mood
Silhouette
Dimension
Horizon

Materials:

FC Tempera Paint
Pencil
Brushes—flat and round
FC 9x12 Watercolor Paper

www.greatartstartshere.com
www.fabercastell.com

THE LITTLE ISLAND, *By Margaret Wise Brown and Leonard Weisgard*

This 1947 Caldecott winner is a simple and charming story of a tiny island, along with all of its flora, fauna and weather, going through the beautiful changes of seasons, as told by the island itself.

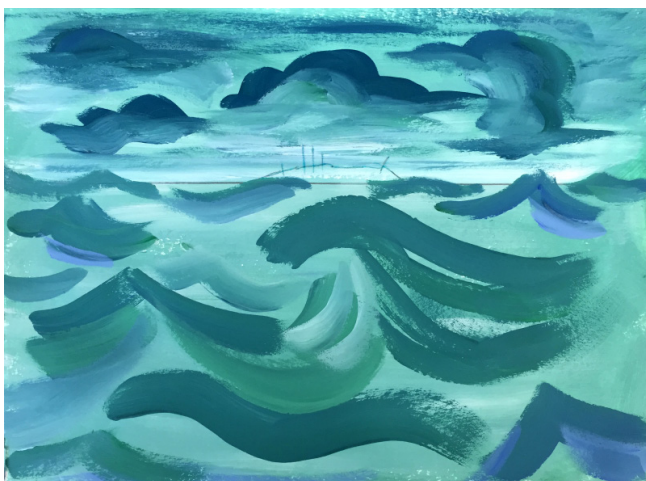
In painting a storm scene with the use of bold color and a variety of simple brushstrokes, students acquire confidence and ability to effectively evoke the feeling of intensity and drama in their own art.



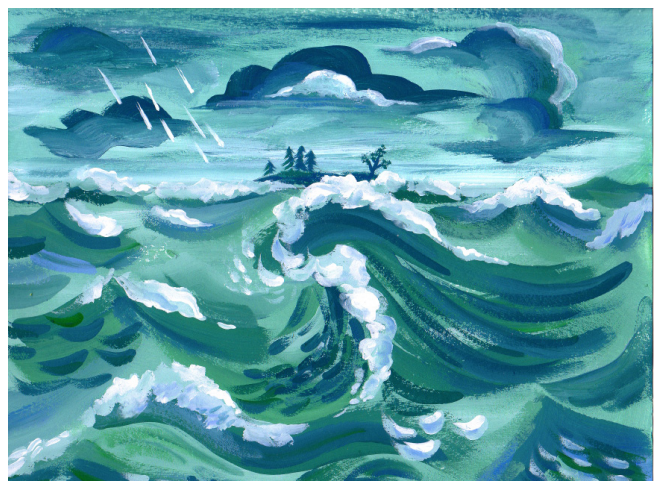
1. Demonstrate to students how to mix blue, green and white to make an aqua. With about a 1-in. wide flat brush, loosely paint entire paper with back and forth horizontal strokes. Position a couple of light, almost white strokes 1/3 of the way down the paper.



2. Draw a horizon line 1/3 of the way down. Experiment mixing blue, green and white to create various shades of color, the darkest shade being just blue and green. With a medium size round brush, paint clouds. Create a receding horizon effect by adding long, thin, light colored horizontal strokes below.



3. Paint loose, simple, bold strokes to convey waves and swells in a dramatic, stormy way. Use medium tones of color. Pencil in the island on the horizon line.



4. Silhouette the island in the darkest color. Add white foam to tops of waves and swells. Add dimension to foam with light shades of blue. With a smaller brush, add lines and choppy strokes of darks and lights to convey motion. Add white cloud detail and rain.