

Manual Retractable Tonneau Cover Installation Guide



Fits: F150 /F250 /F350 SILVERADO 1500/2500/3500
DODGE RAM 1500/2500/3500 TOYOTA TUNDRA



eBay@syneticusa.com
amazon@syneticusa.com



562-821 5057
626-803 8088



Limited lifetime warranty
Powder coated black - 1 YEARS

What you will need

#2 PHILIPS SCREWDRIVER
 9/16" or 1/2" WRENCH (RATCHET WORKS BEST)
 PLIERS OR VICE GRIPS



Attention

REMOVE CONTENTS FROM BOX. VERIFY ALL PARTS ARE PRESENT.
 READ INSTRUCTIONS CAREFULLY BEFORE STARTING INSTALLATION.

DO NOT OVER TORQUE. STANDARD OPERATING LOAD FOR TIGHTEN BODY MOUNT NUTS & BOLTS VARIES FROM 45 TO 65 FOOT POUND.

Components

PARTS LIST			
Qty	Part Description	Qty	Part Description
1 Set	Front Cover	4	Clams with bolts(E) (6Clams for 8' beds)
1 Set	Complete Canister Assembly	2	Waterproof Pad (F)
1 Set	Driver Side Rail	1	Lubricating Oil (G)
1 Set	Passenger Side Rail	1	M6 Hex Wrench (H)
4	M6-1x12mm Hexalobular socket pan head screws (A) For Rail to Canister	2	Large Drain Tubes For Canister(J)
4	M6-1x8mm Hexalobular socket pan head screws (B) For Front cover	2	Small Drain Tubes For Side Rail(K)
2	M6-1 Hex Head Nut (C) For Rail front tab To Canister	1	Plastic Pad (M)
2	M6 Flat Washer (D) For Front Cover	1	Distance bar
8	Adjustment screws (12 Adjustment screws for 8' beds)	2	Keys for lock

FIG 1

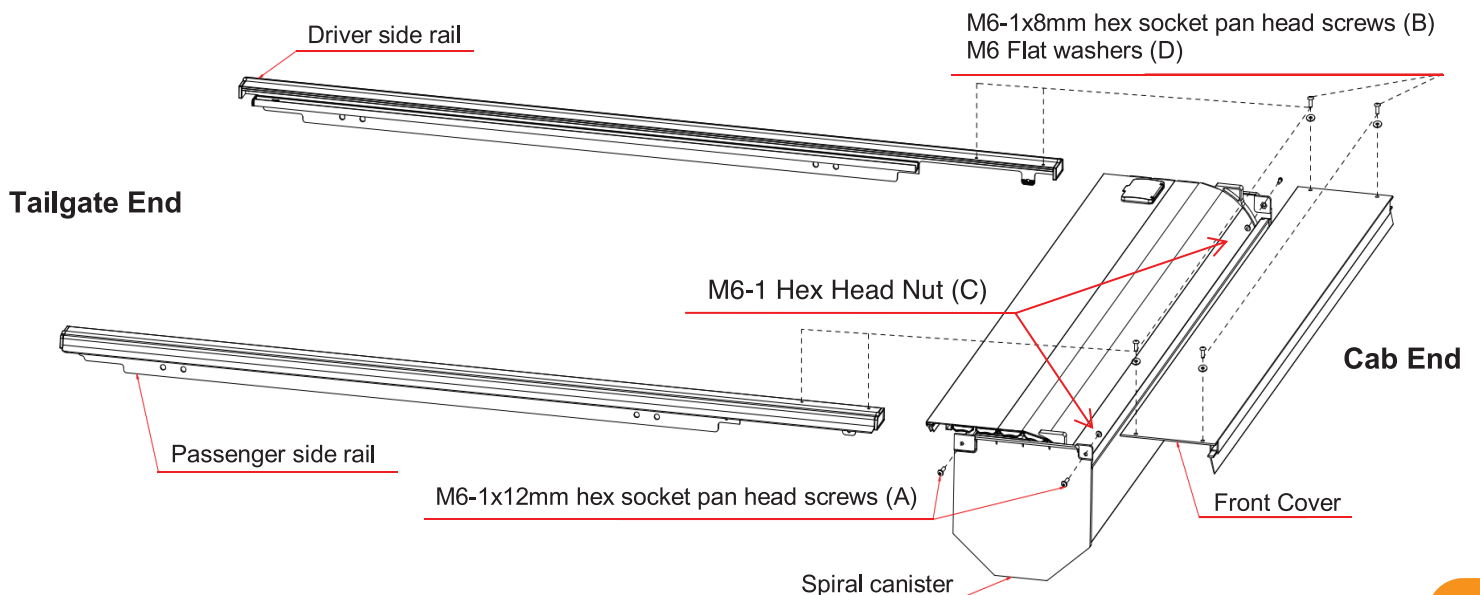
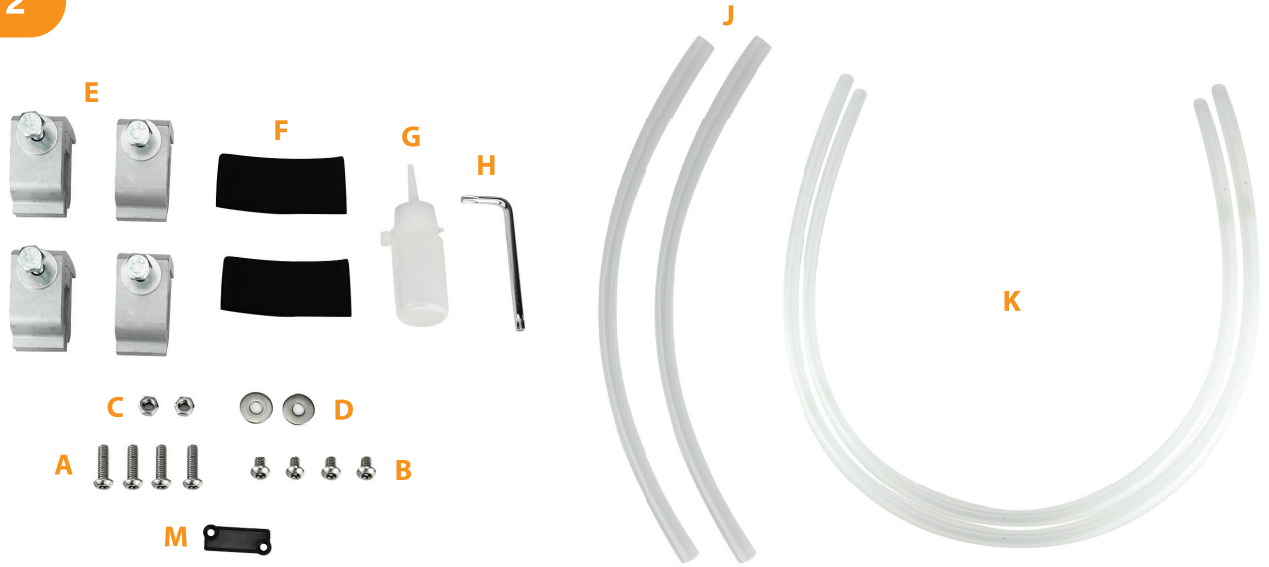


FIG 2



Installation procedure

1. Read installation manual and installation drawing completely before un-boxing and assembling the bed cover. Showing on FIG 1 and FIG 2.
2. Please save Instructions: Important Warranty and Maintenance information enclosed.
3. Keep boxes and packing until installation is complete. Unpack carefully to prevent scratching.
4. DO NOT remove protective films from cover and canister until after installation is completed.
5. See Maintenance page for proper care.

STEP 1

Install the rails to canister, Lift up lock cover and open lock by pressing release button. Pull cover out 6"- 8".
DO NOT allow cover to roll back into canister until rail is installed.



**Driver side rail to canister show*

Roll the cover to rails and attach both rails to canister



**Passenger side rail front tab installation show*



**Driver side rail front tab installation show*

Using the M6-1x12mm screws (A), M6 flat washer (D) and M6-1 hex head nut (C) for front rail tab to canister mounting.

Using M6 hex wrench(H)



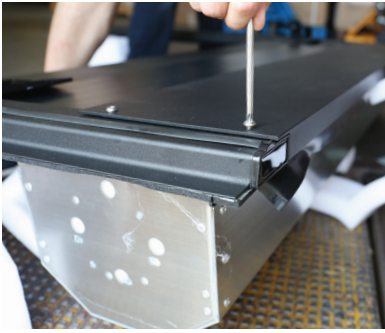
**Passenger side rail rear tab installation show*

Using the M6-1x12mm screws (A) and M6 flat washer (D) for rear rail tab to canister mounting.

Using M6 hex wrench(H)

STEP 2

Install the front cover



Attach front cover on both rail with M6-1 x 8mm screws (B) and M6 flat washer (D)

Using M6 hex wrench(H)



Complete assembled cover

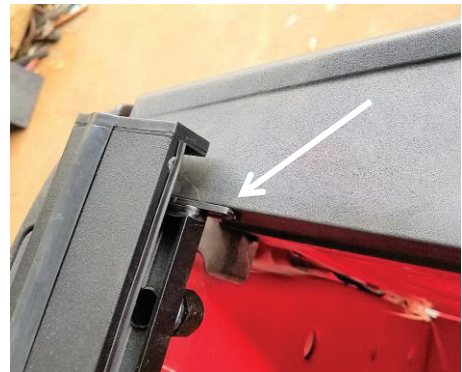
STEP 3

Place the Waterproof Pad (F) to both side of front truck bed rail



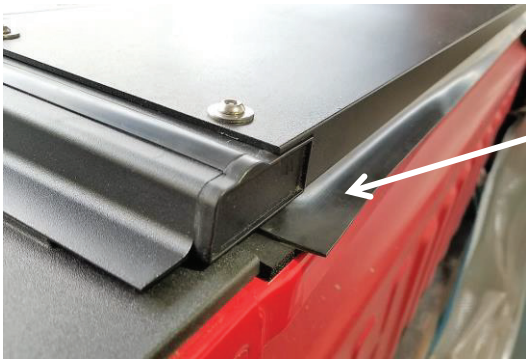
STEP 4

Lift the assembled cover into the bed and position the rails. Using two people, lift the cover and place it at the very front of the bed. Close the tailgate of the pickup.



Move the rails to achieve the 3mm gap using the plastic pad (M). Make certain the rails do not move after measuring.

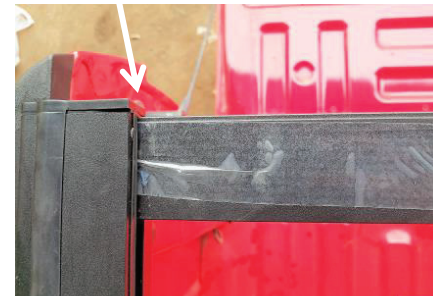
NOTE: Plastic bed liners may have to be cut or notched at the front of the bed if they touch the rolling canister. A jigsaw with medium tooth blade works well.



NOTE: The front cover weather-strip must lay flat across the truckbed. Make certain it is pointed towards the cab. If it extends past the bed rail cap, trim to fit right up to the cap on truck bed.

STEP 5

Install the distance bar and adjustment screws of the rails. Install the distance bar as below, and make sure the distance bar reach the end cab of rail.



Then tighten the adjustment screws to the truck bed rail by hand.



**Front adjustment screws*



**Rear adjustment screws*

NOTE: Do not remove the distance bar until all clams have been tighten.

STEP 6

Install the front & rear set of clamps. Using a 9/16" or 1/2" wrench (depending on your clamps), tighten clamps. When attaching rear clamps, push down on the rail as you tighten the clamps for a better seal on the pickup box rails. The rear of the rail may need to be tilted up or down for best fit over the tailgate.

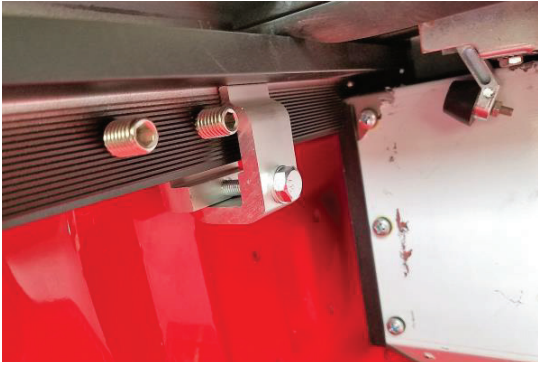


**Front clam*



**Rear clam*

Some models do not use clamps. Refer to the appropriate manual section for proper mounting instructions.



NOTE: 2015+ F150 front clam installation as photo showed

STEP 7

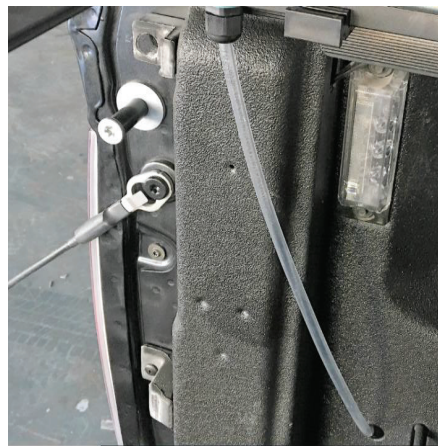
Install drain tube. Remove the original plastic nut from bottom of canister and rear end of rails. And then insert the drain tube into the hole and tighten the plastic nut show as below.



On some trucks there are factory drain holes in both front corners, on others there are plastic plugs that can be drilled out for the tubes. You can enlarge existing holes or drill new holes in the front wall or floor if needed. Be careful of what is behind when you drill. If using a plastic bed liner, then holes can be drilled through the liner only. Cut the tubes to length to fit in desired locations.



**Large drain tube for canister*



**Small drain tube for rail*

Open and close the cover to ensure it is rolling without rubbing or binding. Remove any remaining plastic film. Be sure that all clamps and / or bolts are tighten. Clamps must be periodically checked for tightness. The top surface of the rails should be level. Loosen clamps or bolts, adjust the rail, and tighten if needed. On some models, a better fit over the tailgate may be obtained if the rear of the rails are slightly tilted up or down.

Maintenance

The roll cover was designed for ease of operation, low maintenance, and minimal service requirements. To ensure a long, trouble free life of the roll cover, it is important to follow the instructions below:

- Leaves, Dirt, Debris, etc. should be removed from the top of the cover if evident before opening.
- Use only mild soap and water to wash the cover. Never use any chemicals, polishes or waxes on any part of roll cover.
- If curtain does not roll freely- you may check for obstruction and remove any found. A silicone spray, grease Lubricating Oil may be used from time to time to spray into the side rail and canister to help the cover slide & operate more freely.



**Driver side show*



**Passenger side show*

Take out the front cover and add silicone spray, grease Lubricating Oil to Canister.