

# P84F 3/2 Soft Start/Dump Valve Excelon® Plus Modular System



- > Port size: 3/8" ... 3/4" (ISO G/PTF)
- > Excelon® Plus design allows in-line installation or modular installation with other Excelon® Plus products
- > High forward flow capacity
- > Fast Exhausting
- > Variable Snap Adjustment



## Technical features

### Medium:

Compressed air only

### Maximum supply pressure:

10 bar (145 psi)

### Minimum operating pressure:

3 bar (43 psi)

### Port size:

G3/8, G1/2, G3/4,  
3/8 PTF, 1/2 PTF, 3/4 PTF

### Flow:

51 dm³/s at port size 1/2"  
Full flow P1 to P2 at 6,3 bar  
(91 psi) inlet, with 0,5 bar  
(7 psi) pressure drop  
P2 to P3 = 65 dm³/s.

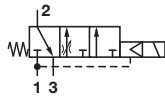
### Ambient/Media temperature:

-20 ... +65°C (-4 ... +149°F)  
Air supply must be dry  
enough to avoid ice  
formation at temperatures  
below +2°C (+35°F).

### Materials:

Body: Aluminium  
End Caps: Aluminum  
Body covers: ABS  
Elastomers: NBR  
Valve: Brass

## Technical data P84F

Symbol	Port Size	Function	Voltage	Exhaust Port	Weight (kg)	Model
	G3/8	3/2 Soft start / Dump	24 V d.c.	G1/2	1,0	P84F-3GT-PFN
	G1/2	3/2 Soft start / Dump	24 V d.c.	G1/2	1,0	P84F-4GT-PFN
	G3/4	3/2 Soft start / Dump	24 V d.c.	G1/2	1,0	P84F-6GT-PFN

## Electrical details for solenoid operators

<b>Voltage tolerance:</b>	-10%/+15%
<b>Rating:</b>	100% continuous duty
<b>Inlet orifice:</b>	0,8mm
<b>Electrical connection:</b>	15mm DIN EN 175301-803 (DIN 43650) Form C
<b>Manual override:</b>	Shrouded push button, spring return
<b>Protection class:</b>	IP65
<b>Materials:</b>	PP5 (body), NBR (seals)

## Option selector

**P84F-★ ★ T -P ★ N**

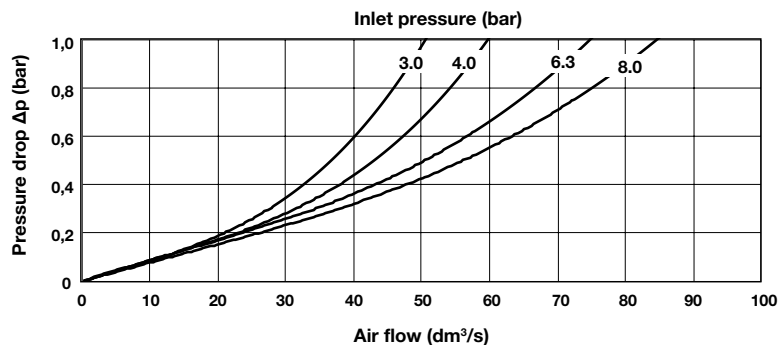
Function	Substitute
3/2 Soft start / Dump	F
Port Size	Substitute
3/8"	3
1/2"	4
3/4"	6
Thread Form	Substitute
PTF	A
ISO G	G

Voltage	Substitute
24 V d.c.	F
110 V a.c.	A
220 V a.c.	B

## Flow characteristics

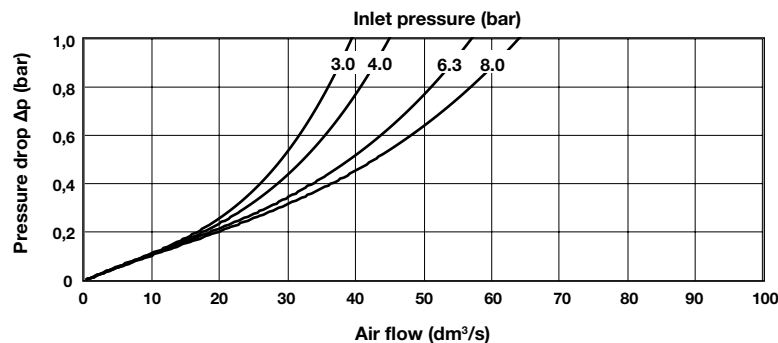
Port 1 to 2

Port size: 1/2"



Port 1 to 2

Port size: 3/8"



## Accessories

### Connection cable with plug, LED and M12 Female



Description	Cable length (m)	Model
PUR-Cable; M12/valve type C DIN connector	0,6	NC-DINCA-123MS-A
	1	NC-DINCA-123MS-1
	2	NC-DINCA-123MS-2
	5	NC-DINCA-123MS-5

### Plug with with moulded cable and indicator



Voltage	Cable length (m)	Model
12 - 24 V a.c. / d.c	1	V10014-D01
12 - 24 V a.c. / d.c	3	V10014-D03
110 V a.c. / d.c.	1	V10015-D01
110 V a.c. / d.c.	3	V10015-D03
220 V a.c. / d.c	1	V10016-D01
220 V a.c. / d.c	3	V10016-D03

### Plug with moulded cable



Description	Cable length (m)	Model
3 pin plug with moulded cable	1	V10013-D01
3 pin plug with moulded cable	3	V10013-D03

### Light Emitting Seals ,15mm form C



Description	Model
Light Emitting Seals Circuit A (12 - 24 V d.c.)	V10037-E13
Light Emitting Seals Circuit B (110 - 120 V a.c.)	V10037-E18
Light Emitting Seals Circuit B (220 - 240 V a.c.)	V10037-E19

### Plug with cable gland and indicator



Description	Model
Plug with cable gland and indicator 12-24 V a.c. / d.c., c/w LED / VDR	V10012-D13
Plug with cable gland and indicator 110 V a.c. / d.c., c/w LED / VDR	V10012-D18
Plug with cable gland and indicator 220 V a.c. / d.c., c/w LED / VDR	V10012-D19

### M12 Adaptor Top - MSUP Valve Plug Form C 8MM



V13981-E01

### M12 Adaptor Rear - MSUP Valve Plug Form C 8MM



V13980-E01

### Plug with cable gland



V10027-D00

## Accessories

### Quikclamp®



Page 6

840014-51KIT

### Quikclamp® with bracket assembled



Page 6

840014-52KIT

### Pressure sensing block 1/4 PTF



Page 6

840016-50KIT

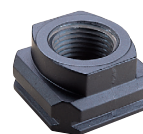
### Pressure sensing block G1/4



Page 6

840016-51KIT

### Port Adaptors



Page 7

3/8 PTF	840015-02KIT
1/2 PTF	840015-03KIT
3/4 PTF	840015-04KIT
G3/8	840015-10KIT
G1/2	840015-11KIT
G3/4	840015-12KIT

### Hybrid Quikclamp® \*1



Page 6

840014-61

### Hybrid Quikclamp® with bracket assembled \*1



Page 6

840014-62

\*1) To connect new Excelon Plus to old Excelon 74/73 units. Having the same hole centres as 74 series mounting bracket.

A Quikclamp adds 13.6 mm to the overall width of a combination unit

### Full flow porting block 3/4" PTF



Page 7

840028-50KIT

### Full flow porting block G3/4



Page 7

840028-53KIT

### Full flow porting block 3/4" PTF



Page 7

840028-50KIT

### Full flow porting block G3/4



Page 7

840028-53KIT

### Pressure switch interface block (18D pressure switch) G1/4



Page 7

0337717000000000

### Pressure switch 18D (0,5 ... 8bar) \*1



Page 7

0881300

### Digital pressure switch 51D (-1 ... 10 bar) \*2



Page 8

0860810

### Electronic Pressure Sensor – stand alone version \*3



Q84G

## Silencer

### Heavy duty muffler, 1/2" NPT male thread, brass wire element



MB004A

### Heavy duty muffler, R1/2 male thread, brass wire element






MB004B

\*1) Flanged version. For other pressure ranges, please see data sheet 5.11.001

\*2) For other pressure ranges, please see data sheet 5.11.385

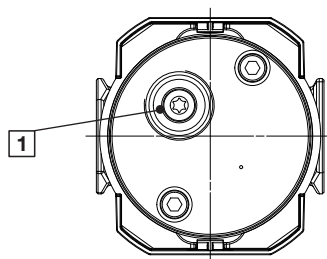
\*3) Q84G stand alone electronic pressure sensor module  
see <http://s.norgren.com/digital-gauge-iodd> for data-sheet 8.900.905.

## Voltage rating and spare coils

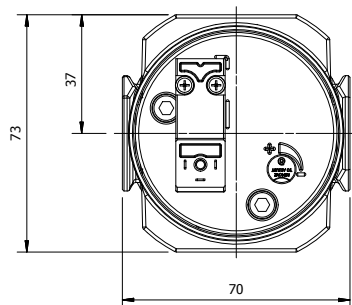
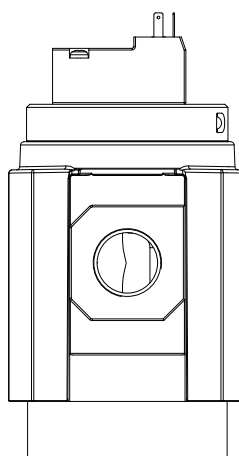
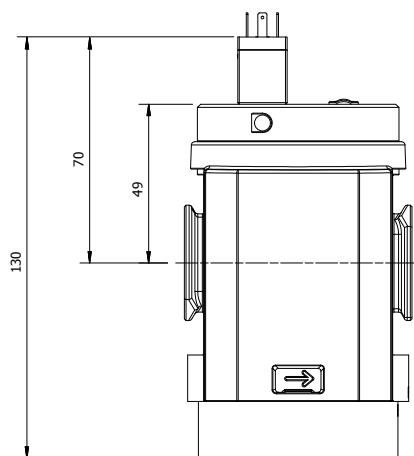
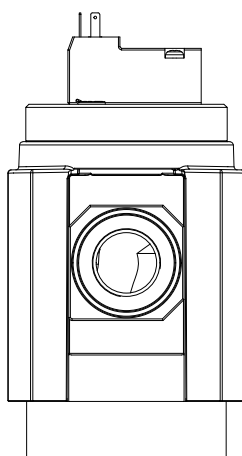
	Voltage	Power	Replacement
	24 V d.c.	1,2 W	840650-50KIT
	110 V a.c.	1,5 VA	840650-51KIT
	220 V a.c.	1,5 VA	840650-52KIT

## Dimensions

Dimensions in mm  
Projection/First angle

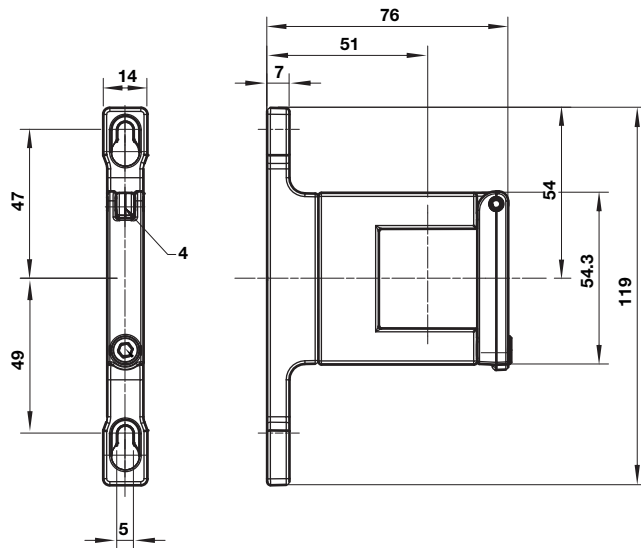


1 1/2" exhaust port (NPT or ISO G)



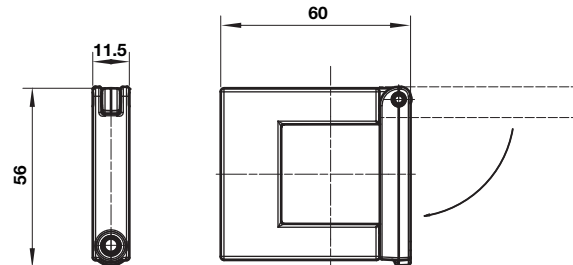
## Accessories

### Quikclamp® with wall bracket

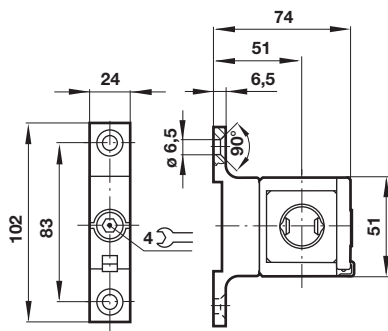


### Quikclamp®

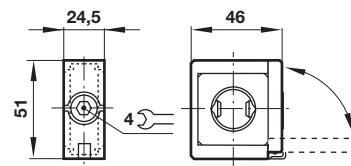
Dimensions in mm  
Projection/First angle



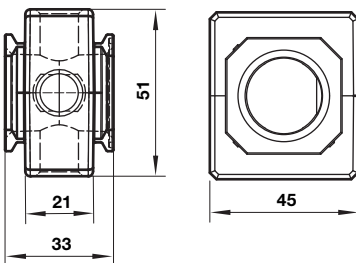
### Hybrid-Quikclamp® with wall bracket



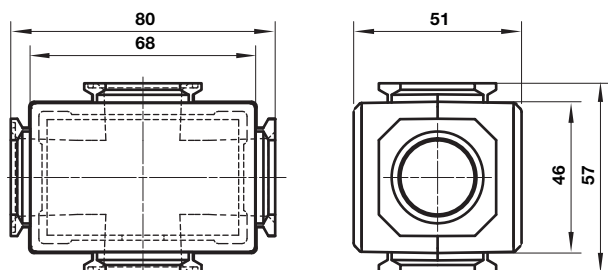
### Hybrid-Quikclamp®



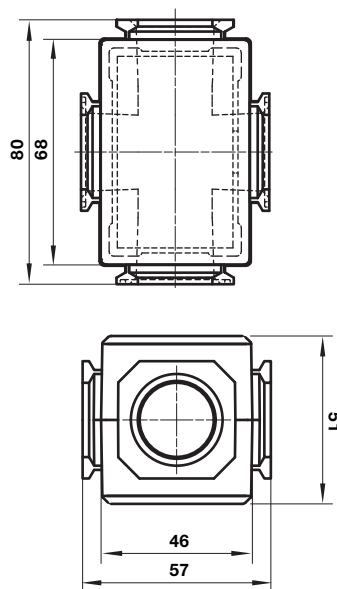
### Pressure sensing block



### Full flow porting block horizontal



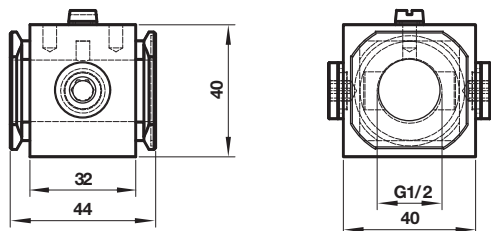
### Full flow porting block vertical



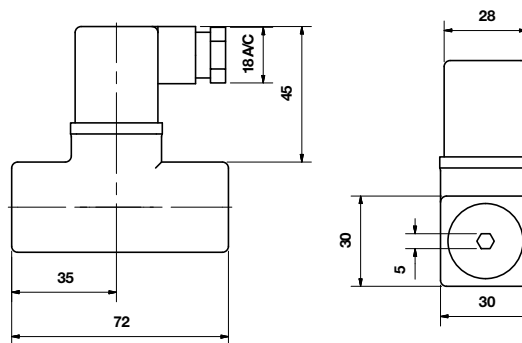
Dimensions in mm  
Projection/First angle



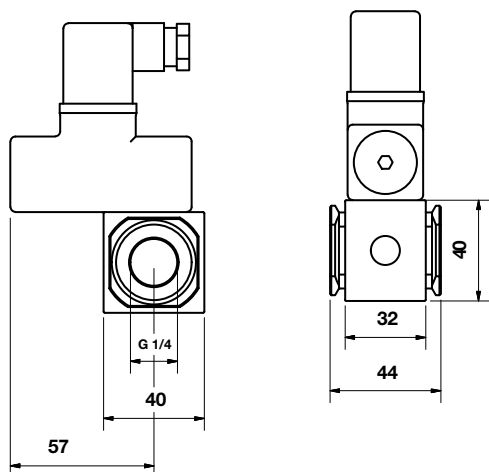
### Porting block for 18D pressure switch



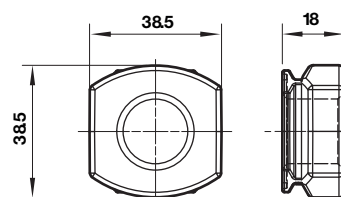
### 18D Pressure switch



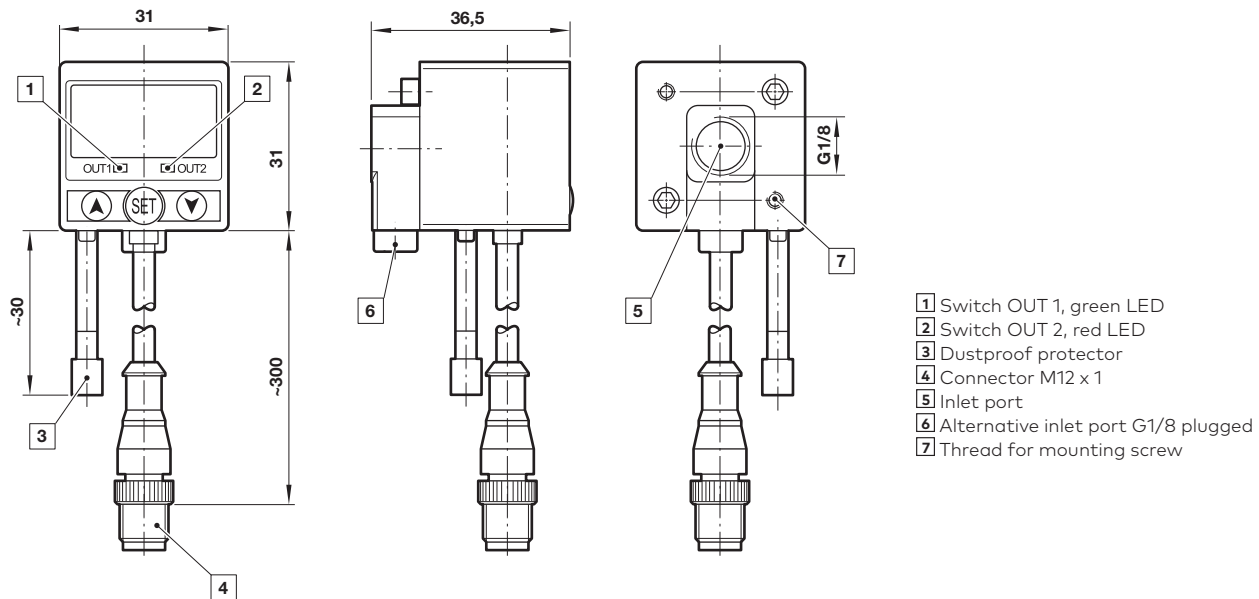
### 18D Porting block and 18D assembled



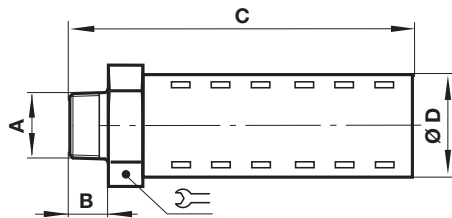
### Pipe adaptor



## 51D Pressure switch - digital



## Silencer



A	B	C	D		Model
R1/2	17	92	32	32	MB004B
1/2 NPT	17	92	32	32	MB004A

## Warning

These products are intended for use in industrial compressed air systems only. Do not use these products where pressures and temperatures can exceed those listed under »**Technical features/data**«.

Before using these products with fluids other than those specified, for non-industrial applications, life-support systems or other applications not within published specifications, consult Norgren Co. Ltd.

Through misuse, age, or malfunction, components used in fluid power systems can fail in various modes.

The system designer is warned to consider the failure modes of all component parts used in fluid power systems and to provide adequate safeguards to prevent personal injury or damage to equipment in the event of such failure.

System designers must provide a warning to end users in the system instructional manual if protection against a failure mode cannot be adequately provided.

System designers and end users are cautioned to review specific warnings found in instruction sheets packed and shipped with these products.