

## GROUP 2 - Z2 SERIES - GEAR PUMP

Aluminum fixed displacement gear pumps with cast iron end covers, standard 4 bolts European flange, 1:8 taper shaft and BSP tapped ports.



Ordering Chart - Clockwise

Part No.	Description	Displacement (cc/rev.)	Max. pressure (bar)
02ZAG04C034DN	GRP 2 GEAR PUMP 4.4CC/REV. CW	4.40	300
02ZAG06C034DN	GRP 2 GEAR PUMP 6.28CC/REV. CW	6.28	300
02ZAG08C034DN	GRP 2 GEAR PUMP 8.16CC/REV. CW	8.16	300
02ZAG11C034DN	GRP 2 GEAR PUMP 11.3 CC/REV. CW	11.30	300
02ZAG14C035DN	GRP 2 GEAR PUMP 14.45 CC/REV. CW	14.45	300
02ZAG17C035DN	GRP 2 GEAR PUMP 16.95 CC/REV. CW	16.95	270
02ZAG20C035DN	GRP 2 GEAR PUMP 20.1 CC/REV. CW	20.10	230
02ZAG25C035DN	GRP 2 GEAR PUMP 25.75 CC/REV. CW	25.75	180
02ZAG31C035DN	GRP 2 GEAR PUMP 31.4 CC/REV. CW	31.40	160

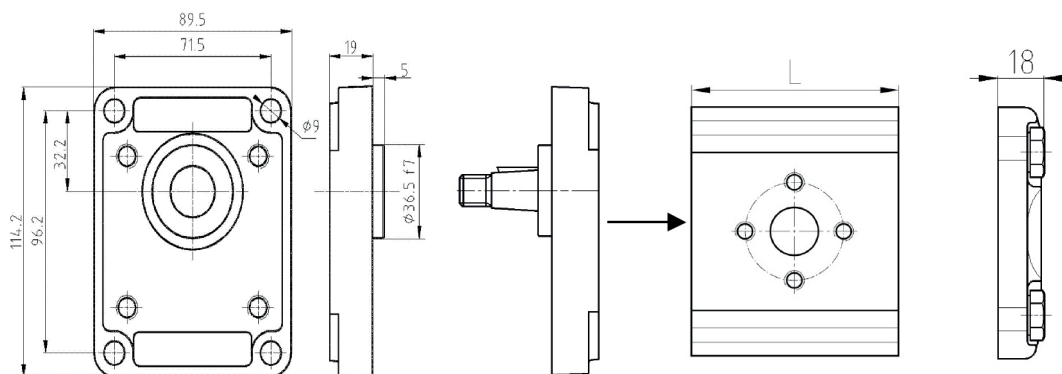
Ordering Chart - Anti Clockwise

Part No.	Description	Displacement (cc/rev.)	Max. pressure (bar)
02ZAG04C034SN	GRP 2 GEAR PUMP 4.4CC/REV. CCW	4.4	300
02ZAG06C034SN	GRP 2 GEAR PUMP 6.28CC/REV. CCW	6.28	300
02ZAG08C034SN	GRP 2 GEAR PUMP 8.16CC/REV. CCW	8.16	300
02ZAG11C034SN	GRP 2 GEAR PUMP 11.3 CC/REV. CCW	11.3	300
02ZAG14C035SN	GRP 2 GEAR PUMP 14.45 CC/REV. CCW	14.45	300
02ZAG17C035SN	GRP 2 GEAR PUMP 16.95 CC/REV. CCW	16.95	270
02ZAG20C035SN	GRP 2 GEAR PUMP 20.1 CC/REV. CCW	20.1	230
02ZAG25C035SN	GRP 2 GEAR PUMP 25.75 CC/REV. CCW	25.75	180
02ZAG31C035SN	GRP 2 GEAR PUMP 31.4 CC/REV. CCW	31.4	160

### GROUP 2

Pump gasket part no.	PG-02M
----------------------	--------

Type		4	6	8	11	14	17	20	25	31
Capacity	cm3/ rev	4.4	6.28	8.16	11.3	14.45	16.95	20.1	25.75	31.4
P1 Max working pressure	bar	300	300	300	300	300	270	230	180	160
P2 Intermittent pressure	bar	340	310	310	310	300	270	240	200	170
P3 Max peak pressure	bar	360	360	360	360	360	330	290	230	300
Max speed for P1 pressure	rpm	4500	4500	3700	3300	2700	2500	2500	2500	2200
Max speed without load	rpm	5500	5500	4700	4000	3300	3000	3000	3000	2700
Min speed for P1 pressure	rpm	1000	700	550	450	400	350	300	250	200



Type	L
4	51
6	54
8	57
11	70
14	75
17	79
20	84
25	93
31	102

The option for alternative mounting flanges and shafts are available, please contact the sales office for details.