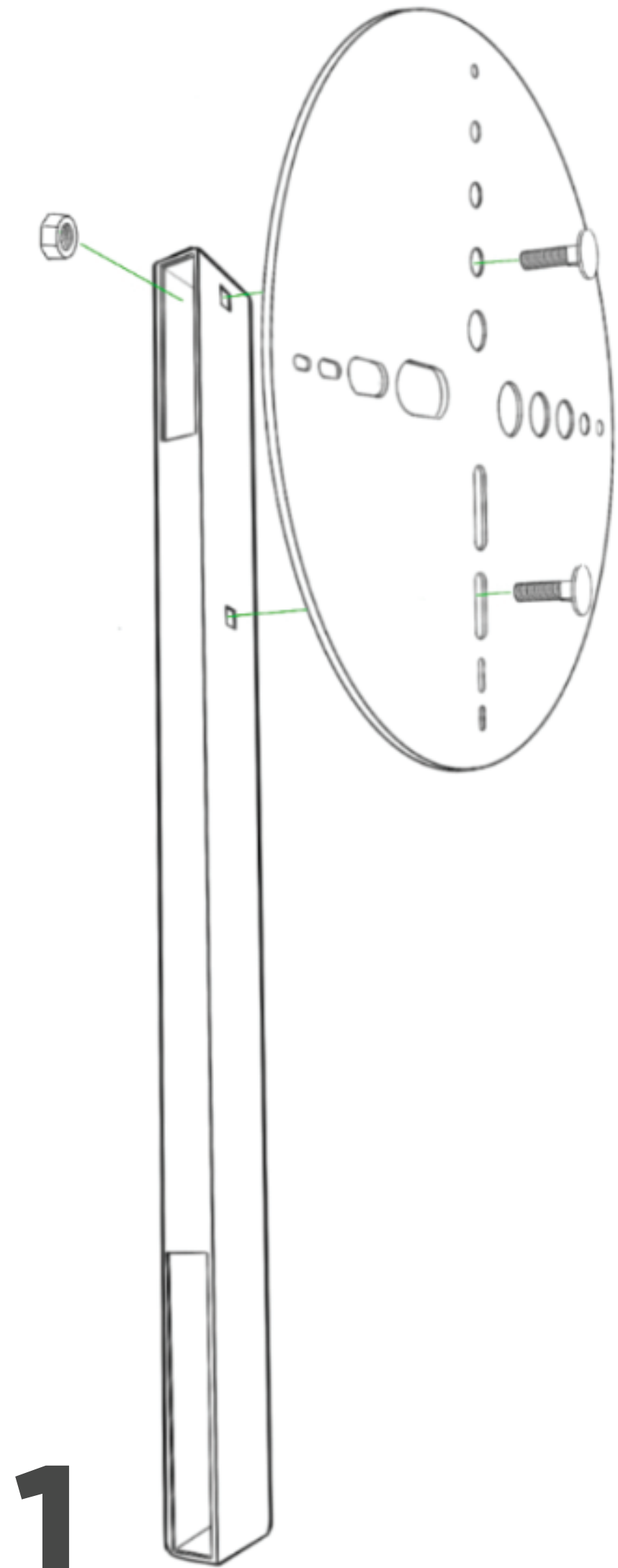


# FRINGE SPORT

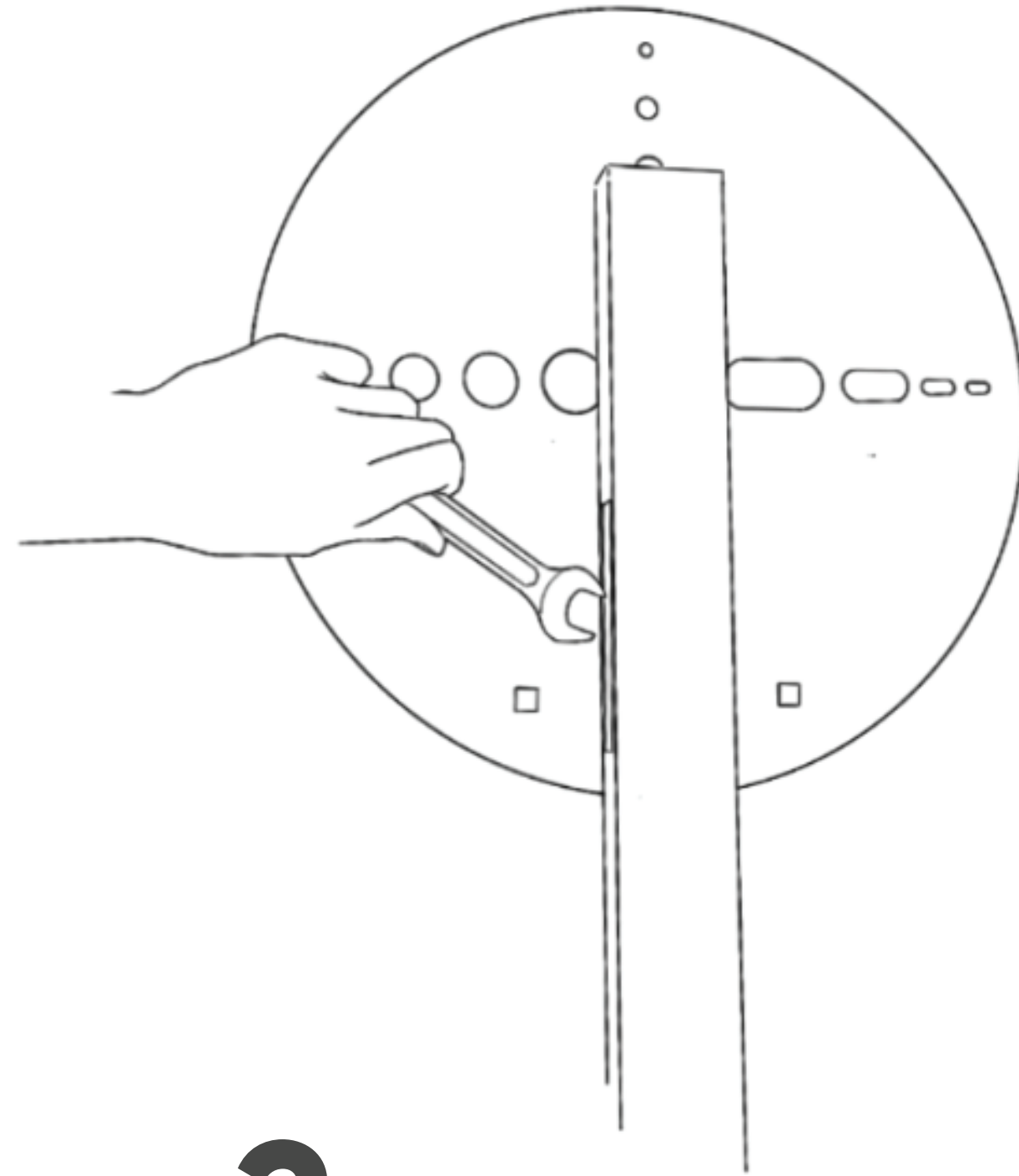
## WALL BALL TARGET V2 DOUBLE

TOOLS NEEDED :  #17 Wrench 5/8" Hardware



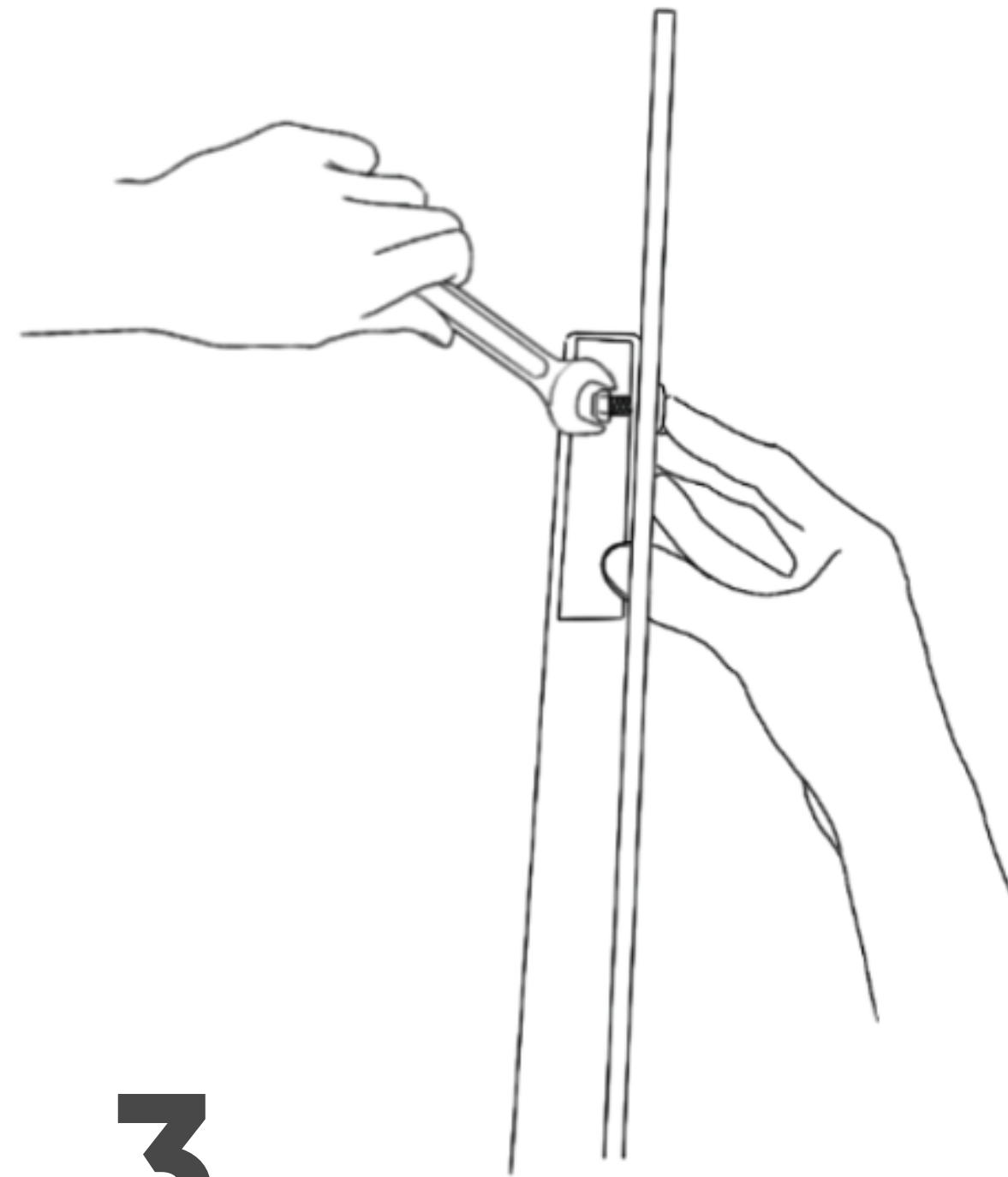
**1**

SLIDE CARRIAGE BOLT THROUGH THE PLATE AND POST. SLIDE THE NUT THROUGH POST. LIGHTLY SCREW THE NUT ONTO THE CARRIAGE BOLT



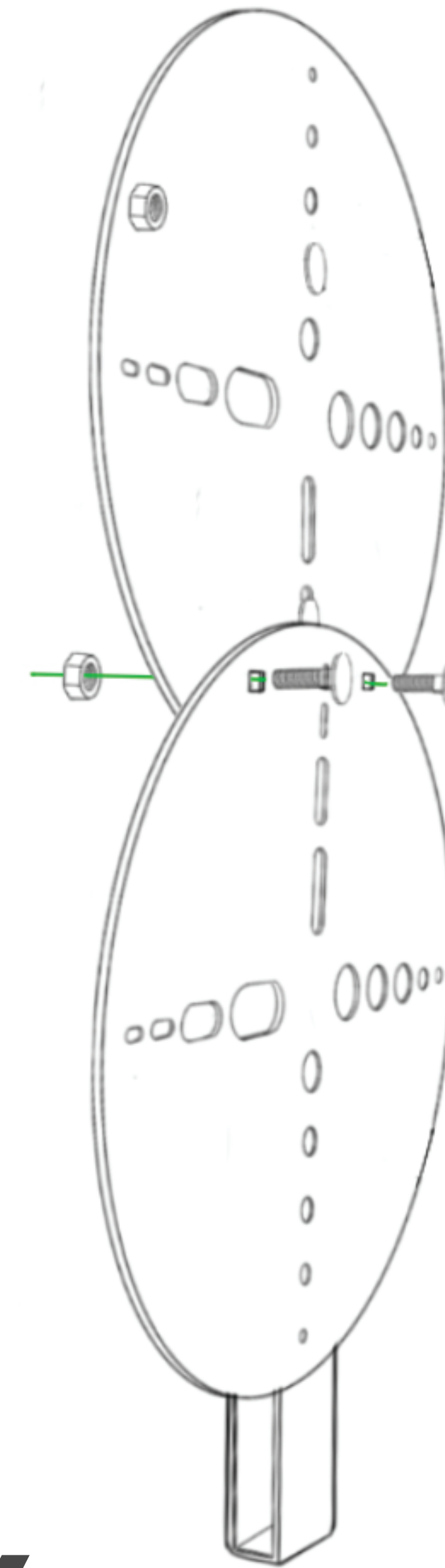
**2**

TURN THE PLATE FLAT ON THE GROUND AND TIGHTEN THE LOWER CARRIAGE BOLT NUT FIRST.



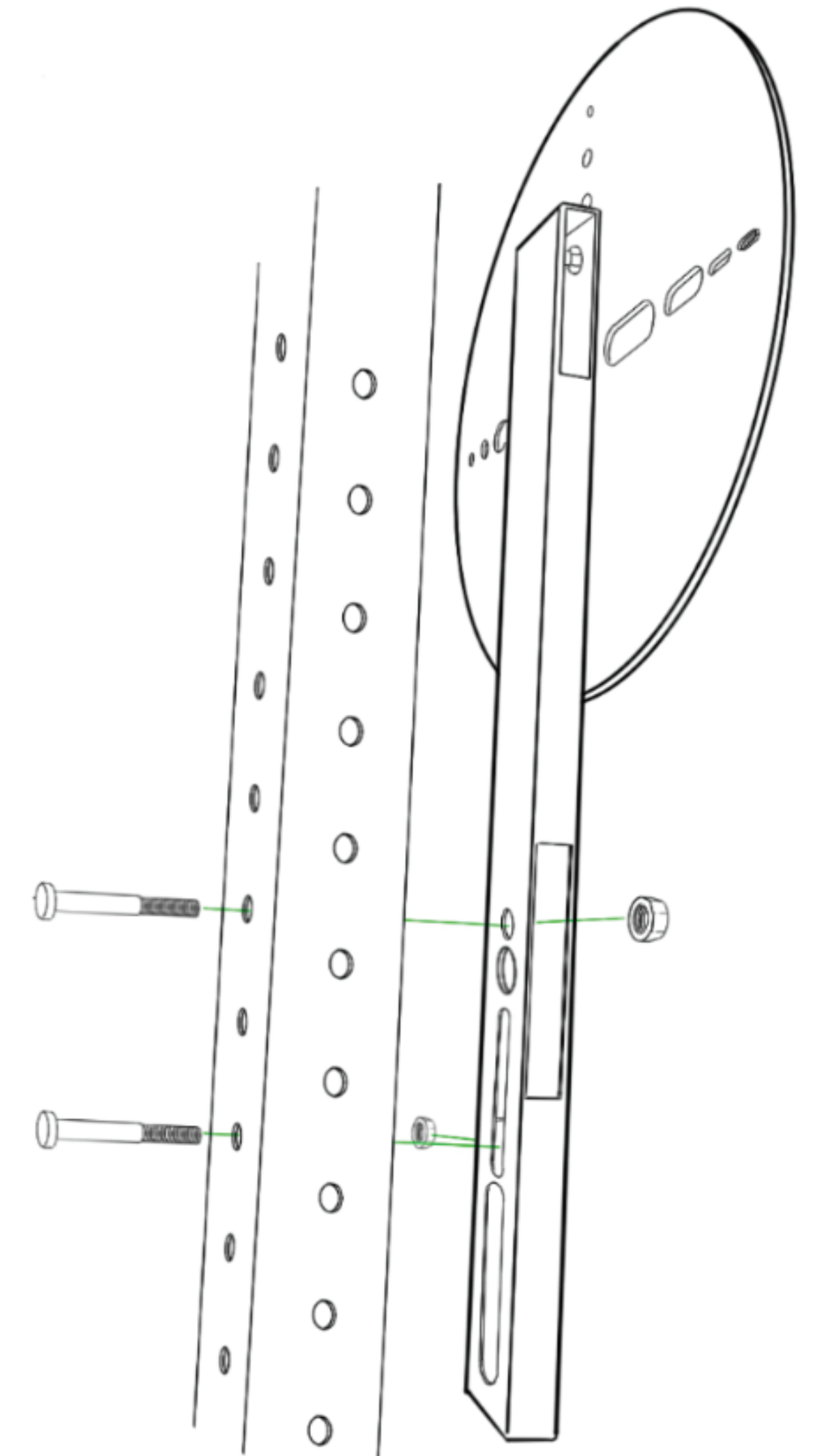
**3**

TURN THE POST ON ITS SIDE, PRESS ON THE HEAD OF THE CARRIAGE BOLT AND TIGHTEN THE NUT.



**4**

MATCH UP THE SQUARE HOLES, SLIDE THE CARRIAGE BOLTS THROUGH THE SQUARE HOLES AND TIGHTEN THE NUTS FROM BEHIND.



**5**

SLIDE THE BOLT THROUGH UPRIGHT THROUGH THE UPRIGHT AND THE NUTS THE POST AND TIGHTEN.