

WHEN DOES A DOG NEED TO WEAR A MUZZLE?

Dog muzzles can look controversial. But, there are certain situations where a muzzle can be very useful, and at times dog muzzles are even necessary, but there are other scenarios when a dog muzzle is definitely the wrong choice.

During an emergency



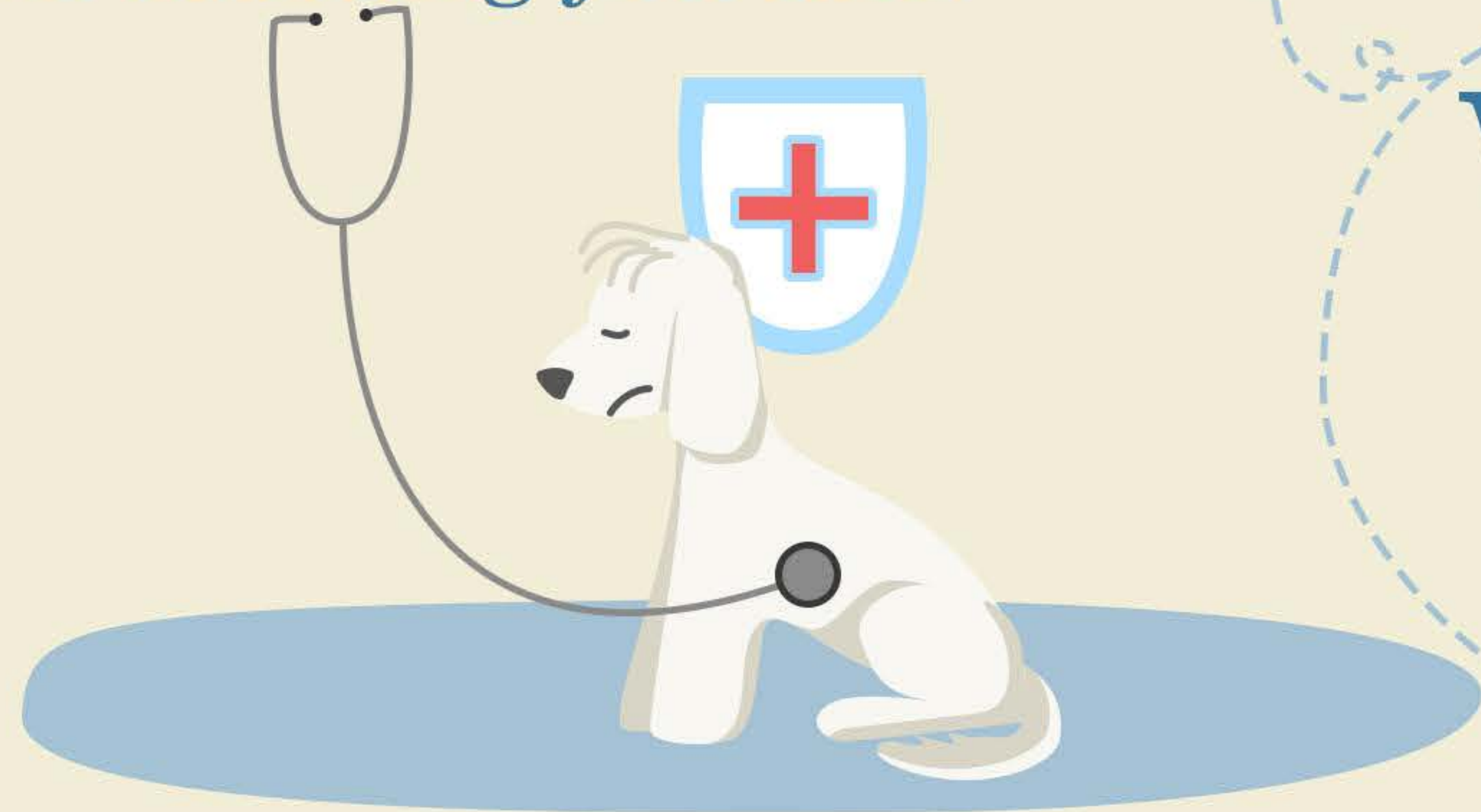
An injured or frightened dog is much more likely to bite. Particularly if you need to move or treat the dog in some way. Using a muzzle will keep you and anyone assisting you safe.

Aggressive Behavior



If a dog has a history of aggression, using a muzzle as a management tool can minimize the risk of an accident in some situations.

When Is It Appropriate to Use a Dog Muzzle?



Sudden Fears and Threats

There may be specific situations that upset or stress your dog, such as examinations at the veterinarian. When you're worried your dog may bite, the temporary use of a muzzle should be considered.



During grooming sessions

If you take your dog to the grooming salon, if your dog does not like certain operations, remember to inform the groomer in advance or just put a muzzle on your dog.

When Should You Not Use a Muzzle?

Do not use a dog muzzle for barking, chewing, or other ongoing behavioral problems



REASON 1:

A muzzle is only meant to be used for short periods of time, and only when your dog is supervised.

REASON 2:

Behavioral problems like barking and chewing are, by their nature, ongoing issues, so a muzzle, a tool meant for temporary and short-term use, is not a solution.



What Are the Different Types of Muzzles?



Basket Muzzle

The basket shape, which is usually the best option for dogs, is often overlooked. A properly fitted basket muzzle is very effective and also allows the dog to pant easily.



Mesh Muzzle

The basket shape, which is usually the best option for dogs, is often overlooked. A properly fitted basket muzzle is very effective and also allows the dog to pant easily.



Short-snout Muzzle

The basket shape, which is usually the best option for dogs, is often overlooked. A properly fitted basket muzzle is very effective and also allows the dog to pant easily.