

## FARMSTEADS OF NEW ENGLAND, INC.



**FNE at Rosewald Farm**  
213 Center Road, Hillsborough, NH  
03244



2019

Ahhh, Spring!



**FNE at Redberry Farm**  
38 Plumer Road, Epping, NH 03042  
603-734-5383



### OUR NEW WEBSITE HAS LAUNCHED!!

Please visit us at  
[www.farmsteads-ne.org](http://www.farmsteads-ne.org)

**You can sign up for events, shop in our new Farm store, catch up on the latest happenings and learn how to help by filling out a volunteer application or donate directly to Farmsteads right on our site!**

### Sign up Now!

11th Annual Golf Scramble in

Memory of Kyle Bartlett

Saturday, June 8, 2019

Beaver Meadow Golf Course

Sign up on our new website or  
call 603-464-2590



**NH  
GIVES**

# HELP US HELP OTHERS

**June 11-12, 2019 6PM-6PM**

Get ready to give! Starting at 6PM on June 11, visit <https://www.nhgives.org> and please make a donation to Farmsteads of New England. You will have 24 hours to make your donation, giving will end at 6PM on June 12.

**“WE MAKE A LIVING BY WHAT WE GET, WE MAKE  
A LIFE BY WHAT WE GIVE”**

**Winston Churchill**

*Shop at AmazonSmile,  
& Amazon will donate a portion of  
the proceeds back to us!  
[smile.amazon.com](http://smile.amazon.com) & choose  
Farmsteads as your charity.*

**amazon  
smile**

Amazon will donate to  
our cause when you buy

## ***Greetings from the desk of the Executive Director***



Spring is finally upon us with Summer around the corner. While around the farm there is lots of fun activity with the planting season in full swing and baby animals on their way, bikes and trikes being dusted off, and summer trips being planned, in my office I am focused on growing the Epping farmstead. We are working to obtain funding from a variety of sources to renovate the existing old barn into usable indoor space for a variety of craft workshops and to start building new residences. We have the first conceptual engineering plans for the site (with a huge “Thank you!” to Allen & Major Associates who have donated their services for this purpose). We are looking forward to putting up a greenhouse and to building a new barn.

Another big focus this spring has been on educating the NH legislators regarding the funding needs in the Developmental Disabilities Service System. The legislators and governor have agreed to fully fund the wait list for which we are grateful, but with the severe workforce shortage in NH and the low wages that agencies such as ours are able to pay their direct care staff, we are in the midst of a staffing crisis. There has been no increase (including no cost of living increases) for over 10 years! We desperately need the NH government to approve a significant increase in funding so that agencies such as ours can raise wages and attract workers to provide services to the individuals who have now come off the waiting list (which means they have had their budgets for services approved) but are waiting for staff to be hired to work with them.

Another bit of encouraging news is that the Center for Medicaid and Medicare Services (CMS) has come out with new guidance for the states as they work to implement the regulations which were promulgated back in 2014. The original guidance had specified that “farmsteads” and other “intentional communities” had to go through a process of “heightened scrutiny” to ensure they were in compliance with the expectations for Home and Community Based Services (HBCS). The new guidance no longer singles out such communities but focuses instead on the services provided and the choices offered to individuals to ensure that they have as much opportunity to engage in their communities as anyone else who does not receive services.

Finally, a heartfelt thanks to all our donors who have responded so generously to our annual appeal!

With much appreciation for your support,

Deborah



## *We would like to welcome our new Board Members!*



### Adam Chandler

Adam has over 15 years of experience in employment law and complex commercial litigation. He has represented clients from diverse industries and backgrounds in matters ranging from commercial billing disputes, employment matters, wage and hour class actions, intellectual property litigation, construction and design disputes, traumatic personal injury matters, and complex insurance coverage matters. Adam's practice is focused in New Hampshire and Massachusetts, but he has represented clients in cases across the country. Adam was born and raised in northern Michigan, spending much of his young life around the plentiful woods, rivers and lakes. After living in Boston and Providence for more than a decade, he now lives in Exeter, New Hampshire, with his wife, Rachel, and their children, Amelia and Levon. Outside of work and family life, Adam enjoys playing basketball & attending concerts.

### Ela Schmuhl

Pamela brings more than 20 years of campaign management and communications expertise to every project, and a track record of delivering exceptional results in highly technical markets. She has both strategic and tactical advertising and public relations experience in the healthcare arena. As the Media Director managing national accounts, Pamela was awarded an ADDY from Cleveland's American Advertising Federation for a dynamic FedEx service launch. This showcases Pamela's ability to pair marketing goals with well targeted communications outlets. In addition to receiving an associate's degree in mass media communications and bachelor's degree in political communication from Russell Sage College, Pamela has earned a master's in system management through the Executive MBA program at Baldwin Wallace College. Notable clients with which Pamela has worked include the Atlas Holdings, Boyle Energy Services & Technology, Cedar Point, Energy Answers International, FedEx Custom Critical, GE Sealant Source, Gund Arena, Habitat for Humanity, HFOTCo, Longview Power, and the U.S. Navy (SSN-718).



### Michael McCord



Michael McCord is an award-winning political and business journalist, writer and communications consultant. He has written for more 50 publications and advised private companies and organizations. A U. S. Army veteran, McCord is native of the state of Washington. He graduated from Keene State College and did graduate work at the University of New Hampshire. He lives in Exeter.

**Mark this on your  
calendar!**

**Farmsteads  
Proudly Presents:  
Beats n' Bowls**

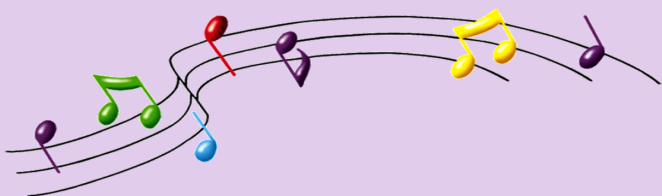
**Locally grown food, fun and  
entertainment!**



**Join us on Saturday, Sept. 14th in  
Hillsboro from 1:00—7:00 PM.**

**Featuring soups, salads &  
breads from local restaurants as  
well as the area's best music in-  
cluding Walker Smith &**

**Beechwood. Stay tuned for  
more details!**



## **Events in Epping**

**The Epping Farmstead is starting to take shape! We now have a wheel-chair accessible ramp and a beautiful porch on the front of the main house. This addition is greatly appreciated and was constructed with the money that was raised at our Fund-A-Need campaign during our annual auction and clambake.**

**Our dwarf goats, Honey and Luna have moved in for the summer and they're happily grazing the pasture down. Soon, they'll be joined by some more goat friends who are currently living in Hillsborough.**

**We've been collecting duck eggs in Hillsborough & in the Spring, we'll be hatching a new flock in Epping.**

**The raised beds have been planted and we're all excited to be enjoying those fresh veggies very soon!**

**You can find us at the Lee Farmer's Market on Thursdays from 3-6 PM.**

### **Looking for a Rewarding Job?**

***Farmsteads has full and part  
time mentor positions open.***

***Call 603-464-2590 or [Indeed.com](https://www.indeed.com)***

## **A Huge Thank You to Fred and Shirley DeScenza!**



How can we even begin to thank these two amazing and generous people? Their financial contributions have improved the lives of so many. Countless hours were spent working in the office and in the fields as Farmsteads was beginning to take formation many years ago. We wouldn't be where we are today without Fred & Shirley and their unwavering support. It was an easy decision for us to dedicate the farmhouse in Hillsborough as a small thank you!

Deborah delivered a heartfelt dedication speech beside our beautiful new sign!



## **Service Spotlight in Epping!**

*Recently, a group of volunteers from Liberty Mutual came to Farmsteads in Epping & worked tirelessly to complete many tasks for us including Spring clean-up and tarping the gardens in order to kill the weeds.*



*Check out the beautiful goat houses they built for our goat friends, Honey and Luna, they are living in style now! Another important task was brought to fruition. Our driveway now has the necessary hard pack leading up to our brand new accessibility ramp. From the bottom of our hearts, we can't thank these very generous folks enough! What a difference a day makes!*



# Farmsteads' Annual Appeal 2019

Friends of Farmsteads, by now you have received your letter announcing the opening of our 2019 Annual Appeal. The donations we receive from the annual appeal are very important as the fields are just waking up. Up at our Hillsborough facility 2 weeks ago, there were still areas of snow on the ground. We still have some time before our farmers are picking the produce to sell but our bills still need to be paid.

Projects are starting to take shape in Epping. Our Farm Manager, Amelia, has started work to reclaim the fields, but they will not be usable until next season. Epping is only 18 months old and there are buildings to maintain and grounds work that needs to be completed. The money we receive for care of the farmers does not cover these costs, our fundraising does.

We started a new option for the Annual Appeal called "Sustaining Partner". This allows you to spread your donation over the year by making monthly payments. Much like a car loan, being spread over a number of years allows you to afford a nicer car than if you have to pay in one lump sum. Hopefully this option is more attractive and allows to you make a larger donation. If you have submitted your pledge card already, thank you. If it is sitting with your other mail that needs your attention, please consider sending it soon. If you have misplaced your Annual Appeal pledge card, please contact the business office. The Board of Directors wishes to thank you for your continued support.

## Farmsteads' Donation Wish List

- Heavy Duty wheelbarrows
- Used, unlocked cell phones & tablets (used for timers & calendars by the people we support)



- Garden hoses
- Rakes, Shovels and Hoes
- Garden seat with wheels for weeding



# Musings from Amelia—Spring, 2019

## **From the Orchard & Gardens:**

Spring has sprung at FNE! The fruit trees and spring flowers are blooming and we are busy bees planting our summer crops, tending the animals and preparing goods for farmers markets. Despite the wet weather, the peas are growing tall, our spring crops are looking great and the greenhouses are filled with summer plants. The farmstand at the end of the drive way opened the last week in April, filled with soaps, plants, crafts, eggs, fresh baked pies, cookies and spring greens. You can also find FNE products & produce in our mobile farmstand every Monday in Peterborough at the Fresh Chicks farmers market on the hospital grounds every Monday from 11-3pm. We have also been invited to attend the annual Rhubarb festival in Bennington NH on June 1<sup>st</sup> where we will have our mobile Farmstand open for business. Once the fields are producing, our mobile farm stand will resume its' travels to Senior & low income housing developments. Our CSA shares filled up quickly this year and we are looking forward to providing the community with fresh food all summer long!



## **From the Barnyard:**

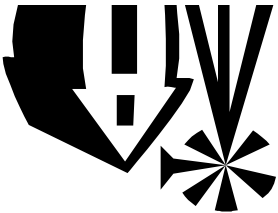
We have welcomed two new calves (Bright and Star) from Eccardt's farm. Feel free to visit them and our goats at our petting farm anytime. Thanks to some wonderful volunteers from Serve with Liberty, we have fenced in a completely new pasture! This new pasture provides us with the much-needed grazing land as we continue to grow as a farm. The goats especially love this new pasture due to the large rocks they can play on. Our hens have been busy at work and we are

now supplying Warner public market, Eccardt's farmstand, Roasted Root Café, Daniels Restaurant and The Country Spirit of Henniker with fresh eggs! We are thankful for our mobile chicken coops and all the opportunities we have!



## **From the Farmstand:**

This year we have added a few new products to our line and expanded the production of others. We have starting creating colorful nesting balls for the spring birds, seed bombs for a bit of gorilla gardening and soap stones for the rougher spots to clean. You can find all our products in our farm stand.



**FARMSTEADS OF  
NEW ENGLAND, INC.**  
213 Center Road  
Hillsborough, NH 03244

**RETURN SERVICE REQUESTED**

Nonprofit Org.  
U. S. Postage  
PAID  
Hillsborough, NH  
Permit No. 10

## Newsletter by Email?

Please send your email address to [info@farmsteads-ne.org](mailto:info@farmsteads-ne.org)

## BOARD OF DIRECTORS

<b>Officers:</b>	
<i>President - Barbara Cohen</i>	
<i>Vice President - Tom Carr</i>	
<i>Treasurer - Martha Adamovich</i>	
<i>Secretary - Vicki Smith</i>	
<b>Members:</b>	
<i>Adam Chandler</i>	<i>Alycmae Flanders</i>
<i>Mary Ford</i>	<i>Paul Gaudet</i>
<i>Michael McCord</i>	<i>Denise Nash</i>
<i>Ela Schmitt</i>	

### Mission Statement

Farmsteads of New England is dedicated to empowering individuals who have Autism, Developmental Disabilities, and others with varying abilities to pursue their chosen path to live a meaningful and satisfying life by providing transitional and long-term supports and services in a rural environment that fosters growth, independence and self-confidence.

FNE is a 501(c)3 tax-exempt, nonprofit corporation.