



VINYL TILE WORKS

Installation Guide: Peel & Stick Floor Panels

Thank you for your purchase of Quadrostyle vinyl floor panels. Our premium quality self-adhesive vinyl stickers are coated with UV protective layer for flooring. We consider them to be a temporary decor solution. Laminated with a commercial grade anti-scratch film they are perfect for high traffic areas, however abrasive wear & tear will damage the panel. We recommend you apply soft felt pads to furniture footings to extend the life of the vinyl panel. Once you've done that you can walk on them as you would normally. Clean your floors as you would normally, with a broom or vacuum cleaner, a damp mop and a mild floor cleaner.

Prepare: Surface preparation is crucial before applying your vinyl floor panels. The floor needs to be clean, dry & dust free. We recommend you sweep around all floor edges to loosen any debris, then vacuum. Using a mild soap solution mop you floor & let it air dry.

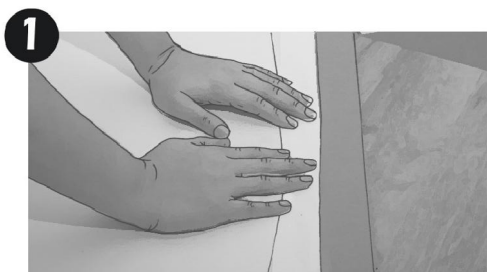
TIP: When you are cleaning & drying your floor remove your shoes to maintain a clean surface.

Visualize: Imagine how you wish the design to look once complete. Choose a corner of the floor and use that as your starting point.

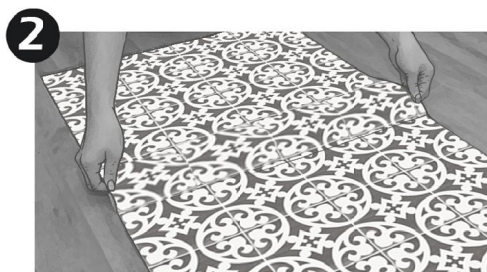
As no room is perfectly square it's important to follow the pattern and tile layout and NOT the edges of the walls.

Each panel is printed with 32 tile squares 15 cm (6") each with white grout lines to replicate a tiled floor.

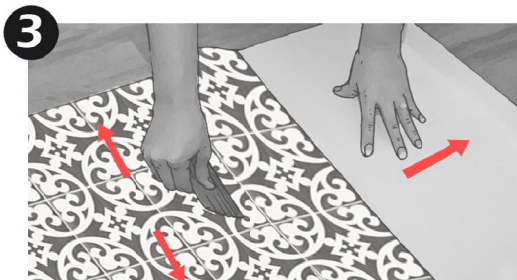
Our designs have a top & a bottom, please familiarize yourself with the edges so that when joining the panels you create a seamless finish.



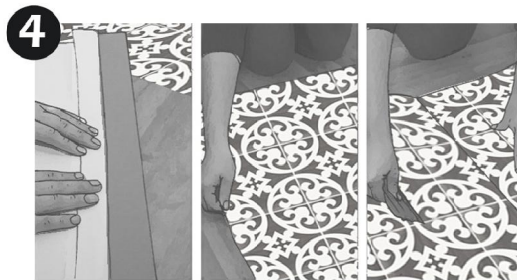
Peel back two inches of the white backing paper along your top edge and fold the backing in place. Butt the edge of the vinyl into the base where the floor meets the wall.



Once the decal is in place, tack the two inch edge down working from the middle outwards. You are trying to not trap any air bubbles in the vinyl.



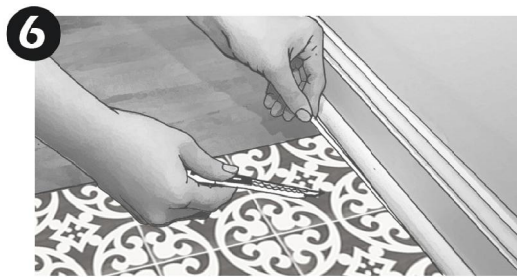
With one hand pulling back the backing and the other sweeping across the vinyl from left to right, work towards you. Continue until the whole decal is down.



Repeat steps 1 through 3 in straight line until you get to the end of the floor. Then repeat the whole line again using the edges of the tiles as your guide.



Work out any air bubbles towards the edges of the tile if you can. If not, you can create a pin-hole in the bubble and remove the trapped bubble that way.



When the decal folds up along a wall (because walls are never straight) work the vinyl into the baseboard the best you can. At the end you will come back and remove any excess with an exacto knife.

There are a number of ways to lay down these decals. This is the most effective method we have found. Feel free to use the method that works best for you.