



PO Box 31126  
Dayton, OH 45437  
Tel: 937.252.2989 Fax: 937.258.3937  
E-mail: info@exciton.com  
www.exciton.com

## COUMARIN 498

**Synonym:** 2,3,6,7-tetrahydro-10-(methylsulfonyl)-1H,5H,11H-[1]benzopyrano[6,7,8-ij]quinolizin-11-one

**Catalog No.:** 04980

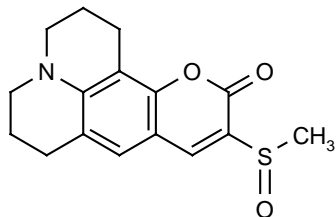
**CAS No.:** 87331-48-4

**MW:** 319.00

**Chemical Formula:** C<sub>16</sub>H<sub>17</sub>NO<sub>4</sub>S

**Appearance:** Orange crystals

**Structure:**



Max. Lasing Wavelength (nm)	Range (nm)	Pump Source (nm)	Solvent	Concentration (molar)	Abs λ-max	FI λ-max
490	476-540	FL <sup>69</sup>	Methanol	8 x 10 <sup>-5</sup>	430 <sup>e</sup>	480 <sup>e</sup>
500	492-508	FL(triaxial) <sup>157</sup>	Ethanol			
514	505-524	FL(triaxial) <sup>157</sup>	EtOH/H <sub>2</sub> O, 1/1			
496	485-525	XeCl(308) <sup>158</sup>	Methanol	5.2 x 10 <sup>-3</sup>		
503	488-527	Ar(458 or 476,bb) <sup>68</sup>	BzOH/EG, 1/4	1.1 x 10 <sup>-2</sup>		
506	490-538	Ar(458 or 476,SF) <sup>68</sup>	BzOH/EG, 1/4	1.1 x 10 <sup>-2</sup>		

EtOH/H<sub>2</sub>O=ethanol/water, BzOH=benzyl alcohol, EG=ethylene glycol, e=ethanol

### REFERENCES:

68. Coherent Inc., 3210 Porter Dr., Palo Alto, CA 94304
69. Candela Laser Corporation, 530 Boston Post Road, Wayland, MA 01778-1833
157. Lasing and Fluorescent Characteristics of Nine, New, Flashlamp-Pumpable, Coumarin Dyes in Ethanol:Water, A.N. Fletcher, D.E. Bliss and J.M. Kauffman, *Optics Commun.*, 47(1), 57 (1983)
158. Lasing Characteristics of the New Dyes in Methanol, W. Young, Lumonics, 105 Schneider Rd., Kanata (Ottawa), Ontario, Canada K2K 1Y3

For a current list of biology, biological stain, or biochemistry references for Coumarin 498 from PubMed, click on the following link:

[Coumarin 498](#)