



PO Box 31126
Dayton, OH 45437
Tel: 937.252.2989 Fax: 937.258.3937
E-mail: info@exciton.com
www.exciton.com

SULFORHODAMINE 640

Synonym: 2',3',6',7',12',13',16',17',-octahydro-spiro[3H-2,1-benzoxathiole-3,9'-(1H,5H,9H,11H,15H)xantheno[2,3,4-ij:5,6,7-ii]]diquinolizine]-6-sulfonic acid, 1,1-dioxide, sodium salt; Like Sulforhodamine 101

Catalog No.: 06500

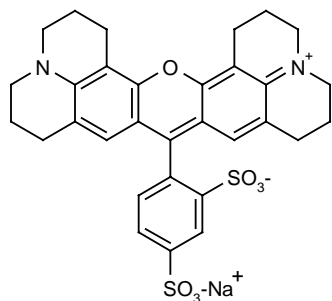
MW: 629.71

Chemical Formula: C₃₁H₃₀N₂O₇S₂·Na

CAS No.: 60311-02-6

Appearance: Dark green crystals

Structure:



Max. Lasing Wavelength (nm)	Range (nm)	Pump Source (nm)	Solvent	Concentration (molar)	Abs λ-max	FI λ-max
645	620-670	FL ³	Ethanol	1 x 10 ⁻⁴	576 ^e	602 ^e
656	615-678	FL ⁶⁹	Methanol	4 x 10 ⁻⁵		
671	660-670	FL ⁶⁹	Methanol	4 x 10 ⁻⁵ (SR640), 0.5 x 10 ⁻⁵ (Ox720)		
653.8		FL (Triaxial) ²²⁷	Acrylic Copolymer	1 x 10 ⁻⁴		
652	615-667	XeCl(308) ¹¹⁰	Methanol	1 x 10 ⁻³		
609	603-630	Nd:YAG(532) ⁵⁷	Methanol	4 x 10 ⁻⁴ (osc), 5.9 x 10 ⁻⁵ (amp)		
630,652	620-675	Nd:YAG(532,25kHz, 40 watts) ²²⁹	MeOH/H ₂ O,1/1	1.5 x 10 ⁻⁴		
615	605-628	Nd:YAG(532)→ F548(544) ¹⁴⁸	MeOH/H ₂ O,1/1	3.8 x 10 ⁻⁴ (osc), 7.31 x 10 ⁻⁵ (amp)		
619	590-640	Nd:YAG(532) ⁷⁹	Ethanol(acidic)	1.5 x 10 ⁻⁴		
619	607-634	Nd:YAG(532) ¹¹⁰	Methanol	2 x 10 ⁻⁴		
656		(cw) ⁷⁵	MeOH/H ₂ O,1/1	8.3 x 10 ⁻⁴		
668	646-680	Ar(vis) ⁸⁷	EG	3 x 10 ⁻³ (SR640), 1 x 10 ⁻³ (R590)		

e = ethanol; MeOH/H₂O = methanol/water; EG = Ethylene Glycol



PO Box 31126
Dayton, OH 45437
Tel: 937.252.2989 Fax: 937.258.3937
E-mail: info@exciton.com
www.exciton.com

SULFORHODAMINE 640

REFERENCES:

3. Phase-R Corporation, Box G-2 Old Bay Rd., New Durham, NH 03855
57. Quanta-Ray, Note: Quanta-Ray is now incorporated as a part of Spectra-Physics, 1250 W. Middlefield Road, Mountain View, CA 94039
69. Candela Laser Corporation, 530 Boston Post Road, Wayland, MA 01778-1833
75. B.W. Petty, K. Morris, *Opt. Quantum Electron*, 8(4), 371 (1976)
79. Efficient Ultraviolet Generation of 2073-2174 Å in $\text{KB}_5\text{O}_8/4\text{H}_2\text{O}$, K. Kato, *IEEE J. Quantum Electron*, QE13(7), 544 (1977)
87. The Selective Excitation of Lithium Isotopes by Intracavity Nonlinear Absorption in a CW Dye Laser, M. Yamashita, M. Kasamatsu, H. Kashiwagi and K. Mashida, *Optics Commun.*, 26(3), 343 (1978)
110. Lumonics Inc., 105 Schneider Road, Kanata, (Ottawa), Ontario, Canada K2K 1Y3
148. Dye Laser Radiation in the 605-725nm Region Pumped by a 544nm Fluorescein Dye Laser, K.D. Bonin and T.J. McIlrath, *Applied Optics*, 23(17), 2854 (1984)
227. Progress in Solid State Dye Laser Development, R.E. Hermes, Proceedings of the Int. Conf. on Lasers '90, STS Press, (1991)
229. Generation of 1.30- to 1.55µm Tunable Radiation from First Stokes Raman Shifting in Hydrogen, K.W. Aniolek, D.L. Miller, N.P. Cernansky, and K.G. Owens, *Appl. Spec.* 51(6), 820(1997)

For a current list of biology, biological stain, or biochemistry references for Sulforhodamine 640 from PubMed, click on the following link:

[Sulforhodamine 640 \(similar to Sulforhodamine 101\)](#)