



PO Box 31126
Dayton, OH 45437
Tel: 937.252.2989 Fax: 937.258.3937
E-mail: info@exciton.com
www.exciton.com

STILBENE 420

Synonym: 2,2''-([1,1'-biphenyl]-4,4'-diyldi-2,1-ethenediyl)bis-benzenesulfonic acid disodium salt; Stilbene 3

Catalog No.: 04200

CAS No.: 27344-41-8

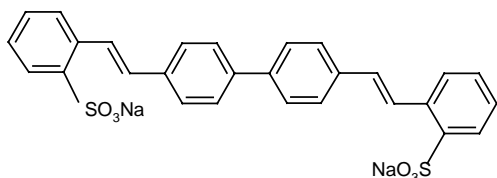
Chemical Name: C₂₈H₂₀O₆S₂·2Na

Molecular Weight: 562.56

Appearance: Yellow powder

Molar Absorptivity (in methanol): 270nm-400nm, absorption maximum 353nm

Structure:



Max. (nm)	Range (nm)	Pump Source (nm)	Solvent	Concentration (molar)	Abs λ-max	FI λ-max
424	410-454	XeCl(308) ¹¹⁴	EtOH/H ₂ O,9/1	1.4 x 10 ⁻³	349 ^m	425 ^e
425	405-467	XeCl(308) ¹¹⁸	Ethanol	1 x 10 ⁻³ (osc)		402
425	412-435	XeCl(308) ¹¹⁰	Methanol	1 x 10 ⁻³		450(sh)
425	412-436	Nd:YAG(355, m-l,QS,100ps) ¹⁶⁹	Methanol	3 x 10 ⁻³		
425	412-444	Nd:YAG(355) ⁵⁷	Methanol	3.9 x 10 ⁻⁴ (osc), 1 x 10 ⁻⁴ (amp)		
425	415-435	Nd:YAG(355) ¹⁰⁹	Methanol/ethanol,1/1	1.5 x 10 ⁻³		
425	420-459	Nd:YAG(355) ⁵³	Methanol	5.3 x 10 ⁻⁴ (osc), 9.1 x 10 ⁻⁵ (amp)		
424	415-437	N ₂ (337) ¹³⁹	Methanol	1.7 x 10 ⁻³		
425	400-460	N ₂ (337) ⁹⁰	EtOH/H ₂ O,1/4	2.1 x 10 ⁻³		
425	407-468	N ₂ (337) ¹¹⁴	EtOH/H ₂ O,8/2	9 x 10 ⁻⁴		
425	408-453	N ₂ (337) ⁴¹	Methanol	1.8 x 10 ⁻³		
427	400-465	N ₂ (337) ¹⁸³	Methanol	1.8 x 10 ⁻³		
431	415-458	N ₂ (337) ⁴¹	H ₂ O+NP-10	1.8 x 10 ⁻³		
445	421-468	N ₂ (337) ⁴¹	H ₂ O	1.8 x 10 ⁻³		
432	406-448	Ar(uv) ⁴²	EG/methanol,9/1	2 x 10 ⁻³		
432	420-470	Ar(334-364) ²⁰⁶	EG	2 x 10 ^{-3*}		
435	407-466	Ar(334-364) ^{123,187}	EG			
449	420-470	Ar(uv) ⁵²	EG	1.5 x 10 ⁻³		
449	436-493	Ar(uv) ⁴²	EG/methanol,9/1	2 x 10 ⁻³		
425	400-480	Kr(uv) or Ar(uv) ⁶⁸	EG	80% pump absorption		

* This represents a maximum value. Concentration should be adjusted to 80-85% absorption of the pump light.

m = methanol; e = ethanol; EtOH/H₂O = Ethanol/water; EG = Ethylene glycol



PO Box 31126
Dayton, OH 45437
Tel: 937.252.2989 Fax: 937.258.3937
E-mail: info@exciton.com
www.exciton.com

STILBENE 420

REFERENCES:

41. Laser Properties of Bis-Styryl Compounds, H. Telle, U. Brinkmann, and R. Raue, *Optics Commun.*, 24(3), 248 (1978)
42. New Efficient and Stable Laser Dyes for CW Operation in the Blue and Violet Spectral Region, J. Kuhl, H. Telle, R. Schieder, and U. Brinkmann, *Optics Commun.*, 24(3), 251 (1978)
52. Continuum, 3150 Central Expressway, Santa Clara, CA 95051, formerly, Quantel International
53. Production of Deep Blue Tunable Picosecond Light Pulses by Synchronous Pumping of a Dye Laser, N.J. Eckstein, A.I. Ferguson, T.W. Hänsch, C.A. Minard and C.K. Chan, *Optics Commun.*, 27(3), 466 (1978)
57. Quanta-Ray, Note: Quanta-Ray is now incorporated as a part of Spectra-Physics, 1250 W. Middlefield Road, Mountain View, CA 94039
68. Coherent Inc., 3210 Porter Dr., Palo Alto, CA 94304
90. Jobin Yvon, 16-18 rue du Canal B.P. 118, 91163 Longjumeau Cedex France
109. Tuning Ranges of 355 nm Pumped Dyes from 410-715 nm, D.M. Guthals and J.W. Nibler, *Optics Commun.*, 29(3), 322 (1979)
110. Lumonics Inc., 105 Schneider Road, Kanata, (Ottawa), Ontario, Canada K2K 1Y3
114. Optimization of Spectral Coverage in an Eight-Cell Oscillator-Amplifier Dye Laser Pumped at 308nm, F. Bos, *Appl. Optics*, 20, 3553 (1981)
118. The XeCl Excimer Laser: A Powerful and Efficient UV Pumping Source for Tunable Dye Lasers, H. Telle, W. Huffer and D. Basting, *Optics Commun.*, 38(5,6), 402 (1981)
123. Powerful Single-Frequency Ring Dye Laser Spanning the Visible Spectrum, T.F. Johnston, Jr., R.H. Brady and W. Proffitt, *Appl. Optics*, 21(13), 2307 (1982)
139. Nitrogen Pumping LD390 and a mixture of LD390 and S420, J.P. Young, private commun., 1983
169. A High Power Synchronously Pumped Dye Laser Operating in the Blue and Green Spectral Region, K.A. Ure, D.C. Hanna and D.J. Pointer, *Optics Commun.*, 60(4), 229 (1986)
183. Laser Science, Inc., 26 Landsdowne Street, Cambridge, MA 02139
187. High Power Single Frequency Operation of Dyes Over the Spectrum from 364 nm to 524 nm Pumped by an Ultraviolet Argon Ion Laser, T. Johnston, *Optics Commun.*, 69(2), 147 (1988)
206. Coherent Inc., 3210 Porter Dr., Palo Alto, CA 94304; (599 Composite Tuning Curves, 1992; The concentration shown represents a maximum value. The final concentration should be adjusted to obtain 80-85% absorption of the pump light.)

For a current list of biology, biological stain, or biochemistry references for Stilbene 420 from PubMed, click on the following link:

[Stilbene 420 or Stilbene 3](#) (not listed in PubMed under these names)