



PO Box 31126  
Dayton, OH 45437  
Tel: 937.252.2989 Fax: 937.258.3937  
E-mail: info@exciton.com  
www.exciton.com

## Rhodamine 575

**Synonym:** 2-[6-(ethylamino)-3-(ethylimino)-2,7-dimethyl-3H-xanthen-9-yl]-benzoic acid

**Catalog No.:** 05750

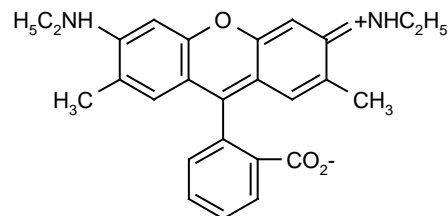
**CAS No.:** 25152-49-2

**Chemical Formula:** C<sub>26</sub>H<sub>26</sub>N<sub>2</sub>O<sub>3</sub>

**MW:** 414.49

**Appearance:** Red crystalline powder

**Structure:**



### Lasing Wavelength

Max. (nm)	Range (nm)	Pump Source (nm)	Solvent	Concentration (molar)	Abs $\lambda$ -max	Fl $\lambda$ -max
575		FL <sup>27</sup>	Ethanol(basic)		518 <sup>m</sup>	555 <sup>m</sup>
577	550-608	FL <sup>69</sup>	Methanol	4 x 10 <sup>-5</sup>	518(b) <sup>e</sup>	
577	563-602	FL <sup>3</sup>	Ethanol	1 x 10 <sup>-4</sup>		
585		FL <sup>27</sup>	Ethanol(acidic)			
590	566-610	FL <sup>12</sup>	MeOH/H <sub>2</sub> O(basic),1/1	1.1 x 10 <sup>-4</sup>		
551	543-570	Nd:YAG(532) <sup>57</sup>	Methanol	2.8 x 10 <sup>-4</sup> (osc), 4.1 x 10 <sup>-5</sup> (amp)		
562	552-582	Nd:YAG(355) <sup>109</sup>	Ethanol	4 x 10 <sup>-4</sup>		
580	560-618	Nd:YAG(532,m-l) <sup>167</sup>	EG/BzOH,3/1	2.4 x 10 <sup>-3</sup>		

MeOH/H<sub>2</sub>O = methanol/water, EG/BzOH = ethylene glycol/benzyl alcohol, m = methanol, e = ethanol

### REFERENCES:

- Phase-R Corporation, Box G-2 Old Bay Rd., New Durham, NH 03855
- Chromatix, 560 Oak Meade Parkway, Sunnyvale, CA 94086
- What's Ahead in Laser Dyes, K.H. Drexhage, *Laser Focus*, 9(3), 35 (1973)
- Quanta-Ray, Note: Quanta-Ray is now incorporated as a part of Spectra-Physics, 1250 W. Middlefield Road, Mountain View, CA 94039
- Candela Laser Corporation, 530 Boston Post Road, Wayland, MA 01778-1833
- Tuning Ranges of 355 nm Pumped Dyes from 410-715 nm, D.M. Guthals and J.W. Nibler, *Optics Commun.*, 29(3), 322 (1979)
- D. Demmer, U. of Toronto, private commun., 1988

For a current list of biology, biological stain, or biochemistry references for Rhodamine 575 from PubMed, click on the following link:

[Rhodamine 575](#)