



PO Box 31126  
Dayton, OH 45437  
Tel: 937.252.2989 Fax: 937.258.3937  
E-mail: [info@exciton.com](mailto:info@exciton.com)  
[www.exciton.com](http://www.exciton.com)

## LD 800

**Synonym:** 9-Cyano-2,3,6,7,12,13,16,17-octahydro-1H,5H,11H,15H-xantheno[2,3,4-ij:5,6,7,-i']diquinolizin-4-ium perchlorate; Rhodamine 800

**Catalog No.:** 08000

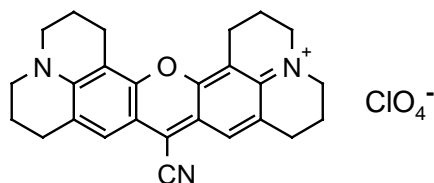
**CAS No.:** 101027-54-7

**Chemical Formula:** C<sub>26</sub>H<sub>26</sub>N<sub>3</sub>O.CIO<sub>4</sub>

**MW:** 495.96

**Appearance:** Dark green crystals

**Structure:**



| Lasing Wavelength<br>Max.<br>(nm) | Range<br>(nm) | Pump Source<br>(nm) | Solvent    | Concentration<br>(molar) | Abs<br>$\lambda$ -max | FI<br>$\lambda$ -max |
|-----------------------------------|---------------|---------------------|------------|--------------------------|-----------------------|----------------------|
| 782                               | 769-805       | FL <sup>69</sup>    | Methanol   | $8.0 \times 10^{-5}$     | 693 <sup>pc/eg</sup>  | 717 <sup>pc/eg</sup> |
| 803                               | 785-814       | FL <sup>69</sup>    | PC/EG, 1/1 | $8.0 \times 10^{-5}$     | 676 <sup>m</sup>      | 704 <sup>m</sup>     |
| 818                               | 796-835       | FL <sup>69</sup>    | DMSO       | $8.0 \times 10^{-5}$     | 695 <sup>s</sup>      |                      |
| 796                               | 730-834       | Kr <sup>182</sup>   | EG         | $4.2 \times 10^{-4}$     | 681 <sup>m</sup>      |                      |

eg = ethylene glycol, m = methanol, pc = propylene carbonate, s = DMSO, DMSO = dimethylsulfoxide, EG = ethylene glycol, PC = propylene carbonate

### REFERENCES

69. Candela Laser Corporation, 530 Boston Post Road, Wayland, MA 01778-1833
182. Dyestuff Lasers and Light Collectors-Two New Fields of Application for Heterocyclic Compounds, R. Raue, H. Harnisch and K.H. Drexhage, *Heterocycles*, 21(1), 167 (1984)

For a current list of biology, biological stain, or biochemistry references for LD 800 from PubMed, click on the following link:

[LD 800 or Rhodamine 800](#)