



PO Box 31126  
Dayton, OH 45437  
Tel: 937.252.2989 Fax: 937.258.3937  
E-mail: info@exciton.com  
www.exciton.com

## LD 688\*

**Synonym:** [2-methyl-6-[2-(2,3,6,7-tetrahydro-1H,5H-benzo[*h*]quinolizin-9-yl)ethenyl]-4H-pyran-4-ylidene]propanedinitrile

**Catalog No.:** 06880

**CAS No.:** 51325-95-2

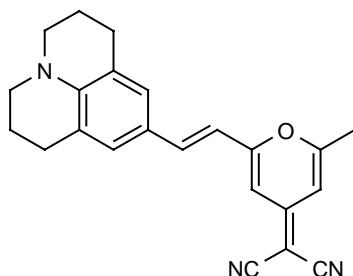
**MW:** 355.44

**Chemical Formula:** C<sub>23</sub>H<sub>21</sub>N<sub>3</sub>O

**Appearance:** Dark green crystals

**Molar Absorptivity (in DMSO):** 4.5 x 10<sup>4</sup> L mole<sup>-1</sup> cm<sup>-1</sup>

**Structure:**



Max. Lasing Wavelength (nm)	Range (nm)	Pump Source (nm)	Solvent	Concentration (molar)	Abs λ-max	FI λ-max
688	653-725	Nd:YAG(532) <sup>92</sup>	DMSO	175mg/l(osc, pre-amp), 24mg/l(amp)	516 <sup>S</sup>	677 <sup>S</sup>
700	660-717	Nd:YAG(532) <sup>134</sup>	DMSO			
692	665-725	N <sub>2</sub> (337) <sup>135</sup>	DMSO	3.3 x 10 <sup>-3</sup>		
663	640-710	Ar(C699-21,SF) <sup>229</sup>	EPH	3.3 x 10 <sup>-3</sup>		
680	665-735	Ar(SF) <sup>129</sup>	BzOH/G,4/1			
695	660-760	Ar <sup>129</sup>	BzOH/G,4/1			

BzOH = Benzyl Alcohol; DMSO, S = Dimethylsulfoxide; EPH = 2-phenoxyethanol; G = Glycerol

\* Equivalent species may be provided or substituted

### REFERENCES:

92. K. Swift, private commun., 1980
129. Argon Pumped Dye Laser Operation in the 690-700nm Region, J. Heber and A. Szabo, *IEEE J. Quantum Electron.*, QE20(1), 9 (1984)
134. D. Heiman, private commun., 1983
135. M. Carrabba, NRG Nitrogen Laser Pumped, private commun., 1983
229. Continuous-wave Dye Lasers in the DCM Region, P. Hammond and D. Cooke, *Appl. Optics* 31(33), 7095 (1992)

For a current list of biology, biological stain, or biochemistry references for LD 688 from PubMed, click on the following link:

[LD 688](#)