



PO Box 31126
Dayton, OH 45437
Tel: 937.252.2989 Fax: 937.258.3937
E-mail: info@exciton.com
www.exciton.com

LD 489

Synonym: 6,7,8,9-tetrahydro-6,8,9-trimethyl-4-(trifluoromethyl)-2H-pyrano[2,3-b][1,8]naphthyridin-2-one

Catalog No.: 04889

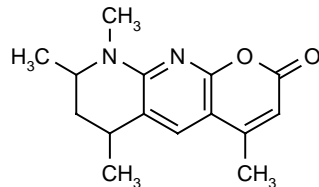
CAS No.: 62377-37-1

MW: 312.29

Chemical Formula: C₁₅H₁₅F₃N₂O₂

Appearance: Orange crystals

Structure:



Lasing Wavelength

Max. (nm)	Range (nm)	Pump Source (nm)	Solvent	Concentration (molar)	Abs λ -max	Fl λ -max
	480-497	FL 156	Ethanol	2×10^{-4}	392 ^e	480 ^e
	490-514	FL 156	EtOH/H ₂ O, 1/1	2×10^{-4}		
	482-509	FL 156	Methanol	2×10^{-4}		
499		FL(triaxial, uv filter) ¹⁸¹	EG/EtOH, 1/1	$A=4\text{cm}^{-1}$		
	468-491	FL(triaxial, uv filter) ¹⁸¹	THF	$A=4\text{cm}^{-1}$		
	487-511	FL(triaxial, uv filter) ¹⁸¹	DMA	$A=4\text{cm}^{-1}$		
	486-508	FL(triaxial, uv filter) ¹⁸¹	DMF	$A=4\text{cm}^{-1}$		
	489-513	FL(triaxial, uv filter) ¹⁸¹	NMP	$A=4\text{cm}^{-1}$		
502		FL(triaxial, uv filter) ¹⁸¹	EtOH/H ₂ O, 1/1	$A=4\text{cm}^{-1}$		
489	471-535	XeCl(308) ¹⁵⁸	Methanol	5.3×10^{-3}		
496	472-532	Nd:YAG(355) ⁵⁷	Methanol	1.3×10^{-3} (osc), 5.5×10^{-4} (amp)		

e = ethanol

DMA = N,N-dimethylacetamide; DMF = dimethylformamide; EG = ethylene glycol; EtOH = ethanol; H₂O = water; NMP = N-methyl-2-pyrrolidinone; THF = tetrahydrofuran

REFERENCES:

57. Quanta-Ray, Note: Quanta-Ray is now incorporated as a part of Spectra-Physics, 1250 W. Middlefield Road, Mountain View, CA 94039
156. Fluorescence and Lasing Characteristics of some Long-Lived Flashlamp-Pumpable, Oxazole Dyes, A.N. Fletcher, R.A. Henry, R.F. Kubin and R.A. Hollins, *Optics Commun.*, 48(5), 352 (1984)
158. Lasing Characteristics of the New Dyes in Methanol, W. Young, Lumonics, 105 Schneider Rd., Kanata (Ottawa), Ontario, Canada K2K 1Y3
181. Laser Dye Stability, Part II. The Fluorinated Azacoumarin Dyes, A.N. Fletcher, M.E. Pietrak, and D.E. Bliss, *Appl. Phys. B*, 42, 79 (1987)

For a current list of biology, biological stain, or biochemistry references for LD 489 from PubMed, click on the following link:

[LD 489](#)