



PO Box 31126
Dayton, OH 45437
Tel: 937.252.2989 Fax: 937.258.3937
E-mail: info@exciton.com
www.exciton.com

LD 425

Synonym: 4-methyl-7-(4-morpholinyl)-2H-pyrano[2,3-b]pyridin-2-one

Catalog No.: 04250

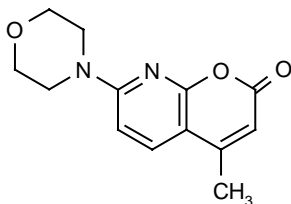
CAS No.: 57980-07-1

MW: 246.26

Chemical Formula: C₁₃H₁₄N₂O₃

Appearance: White crystals

Structure:



Max. Lasing Wavelength (nm)	Range (nm)	Pump Source (nm)	Solvent	Concentration (molar)	Abs λ -max	FI λ -max
425	405-465	FL ⁸	Ethanol		357 ^e	427 ^e
431	419-440	FL ³	Methanol + 1% LO	2×10^{-4}		
412	404-425	N ₂ (337) ⁹	p-Dioxane	7.5×10^{-3}		
427	417-444	N ₂ (337) ⁹	Ethanol	7.5×10^{-3}		

e = ethanol

REFERENCES:

- Phase-R Corporation, Box G-2 Old Bay Rd., New Durham, NH 03855
- Near-Ultraviolet Lasing Dyes, Part 1: Search for New Dyes and Summation of Results, P.R. Hammond, A.N. Fletcher, R.A. Henry, R.L. Atkins and D.W. Moore; and Near-Ultraviolet Lasing Dyes, Part 2: Effects of Coaxial Flashlamp Excitation, A.N. Fletcher, *NWC TP 5768* (1975); Laser Dye Stability, Part 3: Bicyclic Dyes in Ethanol, A.N. Fletcher, *Appl. Phys.*, 14, 295 (1977); Laser Dye Stability, Part 5: Effect of Chemical Substituents of Bicyclic Dyes Upon Photodegradation Parameters, A.N. Fletcher and D.E. Bliss, *Appl. Phys.*, 16, 289 (1978)
- A. Williamson, private commun., 1977

For a current list of biology, biological stain, or biochemistry references for LD 425 from PubMed, click on the following link:

[LD 425](#) (zero references as of May 2006)