



## DTTC IODIDE

**Synonym:** 3-ethyl-2-[7-(3-ethyl-2(3H)-benzothiazolylidene)-1,3,5- heptatrienyl]-benzothiazolium iodide

**Catalog No.:** 08630

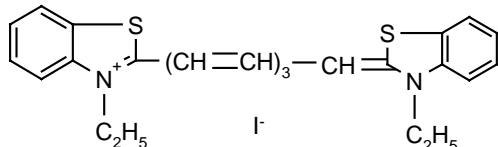
**CAS No.:** 3071-70-3

**Chemical Formula:** C<sub>25</sub>H<sub>25</sub>N<sub>2</sub>S<sub>2</sub>.I

**MW:** 544.51

**Appearance:** Green-yellow crystals

**Structure:**



Max. Lasing Wavelength (nm)	Range (nm)	Pump Source (nm)	Solvent	Concentration (molar)	Abs λ-max	Fl λ-max
889		FL <sup>39,40</sup>	DMSO	2 x 10 <sup>-4</sup>	763 <sup>e</sup>	815 <sup>e</sup>
	815-870	FL→R640(660) <sup>3</sup>	EG	1.5 x 10 <sup>-4</sup>		
	820-900	FL→KR620(Red) <sup>62</sup>	DMSO			
849	828-883	XeCl(308) <sup>114</sup>	DMSO	7.8 x 10 <sup>-4</sup>		
879	836-925	XeCl(308) <sup>110</sup>	DMSO	7 x 10 <sup>-4</sup>		
828	813-859	Nd:YAG(532) <sup>53</sup>	DMSO			
834		Nd:YAG→C720(700) <sup>66</sup>	DMSO	2 x 10 <sup>-4</sup>		
852	834-892	N <sub>2</sub> (337) <sup>114</sup>	DMSO	1.1 x 10 <sup>-3</sup>		
855	840-877	N <sub>2</sub> (337) <sup>111</sup>	DMSO	1.2 x 10 <sup>-3</sup>		
876	(bb)	N <sub>2</sub> (337) <sup>97</sup>	DMSO	2 x 10 <sup>-1</sup>		
	840-870	Kr <sup>36b</sup>	DMSO			
	790-871	Ruby(694) <sup>96</sup>	DMSO	6 x 10 <sup>-5</sup>		
829		Ruby(694) <sup>95</sup>	Acetone	1 x 10 <sup>-4</sup>		
	816-855	Ruby(694) <sup>35</sup>	DMSO			

DMSO = Dimethylsulfoxide; EG = Ethylene Glycol; e = ethanol

### REFERENCES:

- Phase-R Corporation, Box G-2 Old Bay Rd., New Durham, NH 03855
- Lasing Efficiency and Photochemical Stability of Infrared Laser Dyes in the 710-1080 nm Region, P.E. Oettinger and C.F. Dewey, *IEEE J. Quantum Electron.*, QE12(2), 95 (1976)
- b. High Power CW Dye Laser Emission in the Near IR from 685 nm to 965 nm, K.M. Romanek, O. Hildebrand and E.Gobel, *Optics Commun.*, 21(1), 16 (1977)
- Flashlamp-Excited Organic Liquid Laser in the Range from 342 to 889 nm, M. Maeda and Y. Miyazoe, *Jpn. J. Appl. Phys.*, 11(5), 692 (1972)
- Improvement of Infrared Flashlamp-Pumped Dye Laser Solution with a Double Effect Additive, C. Loth and P. Gacoin, *Optics Commun.*, 15(2), 179 (1975)
- Continuum, 3150 Central Expressway, Santa Clara, CA 95051, formerly, Quantel International
- Inexpensive, Pulsed, Tunable ir Dye Laser Pumped by a Flashlamp-Driven Dye Laser, A. Passner and T. Venkatesan, *Rev. Sci. Instrum.*, 49(10), 1413 (1978)
- Near Infrared Dye Laser Pumped by a Carbazine 122 Dye Laser, K. Kato, *IEEE J. Quantum Electron.*, QE12, 442 (1976)
- Stimulated Emission for 19 Polymethine Dyes-Laser Action over the Continuous Range 710-1060 mu, Y. Miyazoe and M. Mitsuo, *Appl. Phys. Lett.*, 12, 206 (1968)
- Broadly Tunable, Narrow Linewidth Dye Laser Emission in the Near Infrared, C.D. Decker and F.K. Tittel, *Optics Commun.*, 7(2), 155 (1973)
- Nitrogen Laser Excitation of Polymethine Dyes for Emission Wavelength up to 9500 Å, O. Hildebrand, *Optics Commun.*, 10(4), 310 (1974)
- Lumonic Inc., 105 Schneider Road, Kanata, (Ottawa), Ontario, Canada K2K 1Y3
- Lasing Properties of Several Near-IR Dyes for a Nitrogen Laser-Pumped Dye Laser with an Optical Amplifier, B.M. Pierce and R.R. Birge, *IEEE J. Quantum Electron.*, QE18, 1164 (1982)
- Optimization of Spectral Coverage in an Eight-Cell Oscillator-Amplifier Dye Laser Pumped at 308nm, F. Bos, *Appl. Optics*, 20, 3553 (1981)

For a current list of biology, biological stain, or biochemistry references for DTTC Iodide from PubMed, click on the following link:

[DTTCI](#)