



PO Box 31126
Dayton, OH 45437
Tel: 937.252.2989 Fax: 937.258.3937
E-mail: info@exciton.com
www.exciton.com

COUMARIN 510

Synonym: 2,3,6,7-tetrahydro-10-(3-pyridinyl)-1H,5H,11H-[1]benzopyrano[6,7,8-ij]quinolizin-11-one

Catalog No.: 05100

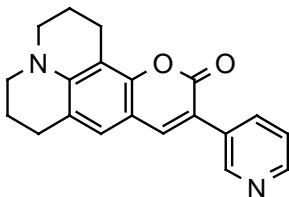
CAS No.: 87349-92-6

MW: 318.00

Chemical Formula: C₂₀H₁₈N₂O₂

Appearance: Yellow crystals

Structure:



Lasing Wavelength Max. (nm)	Range (nm)	Pump Source (nm)	Solvent	Concentration (molar)	Abs λ-max	FI λ-max
511	504-518	FL(triaxial) ¹⁵⁷	Ethanol		425 ^e	496 ^e
520	513-527	FL(triaxial) ¹⁵⁷	EtOH/H ₂ O, 1/1			
510	495-538	XeCl(308) ¹⁵⁸	Methanol	2 x 10 ⁻³		
524	493-550	Ar(458 or 476, Ring, bb) ⁶⁸	BzOH/EG, 1/4	3.2 x 10 ⁻³		
530	493-552	Ar(458 or 476, Ring, SF) ⁶⁸	BzOH/EG, 1/4	3.2 x 10 ⁻³		

EtOH/H₂O=ethanol/water, BzOH=benzyl alcohol, EG=ethylene glycol, e=ethanol

REFERENCES:

68. Coherent Inc., 3210 Porter Dr., Palo Alto, CA 94304
157. Lasing and Fluorescent Characteristics of Nine, New, Flashlamp-Pumpable, Coumarin Dyes in Ethanol:Water, A.N. Fletcher, D.E. Bliss and J.M. Kauffman, *Optics Commun.*, 47(1), 57 (1983)
158. Lasing Characteristics of the New Dyes in Methanol, W. Young, Lumonics, 105 Schneider Rd., Kanata (Ottawa), Ontario, Canada K2K 1Y3

For a current list of biology, biological stain, or biochemistry references for Coumarin 510 from PubMed, click on the following link:

[Coumarin 510](#)